

**General Notes**

STRUCTURE FOOTINGS ARE TO BE GRADE "N" CONCRETE TO BE THE THICKNESS SHOWN IN THE DETAIL OR 3" PRECAST OF CAST-IN PLACE CONCRETE.

REINFORCEMENT FOR 5" PRECAST REINFORCED CONCRETE SHALL BE 6" x 18" #16 @ 24" O.C. WELDED STEEL WIRE FABRIC (W.F.) SHALL BE SPACED 24" CLEAR.

PRECAST INLET UNITS AND BASES SHALL CONFORM TO THE RELEVANT REQUIREMENTS OF AASHTO DESIGNATION (1992).

PRECAST REINFORCED BASES SHALL BE PLACED ON A BED OF MATERIAL AT LEAST 5" IN THICKNESS WHICH MEETS THE REQUIREMENTS FOR SPREAD LOAD BEHAVIOR. THIS BEDDING SHALL BE COMPACTED FULL DEPTH THROUGHOUT SUPPORT FOR THE ENTIRE AREA OF THE BASES.

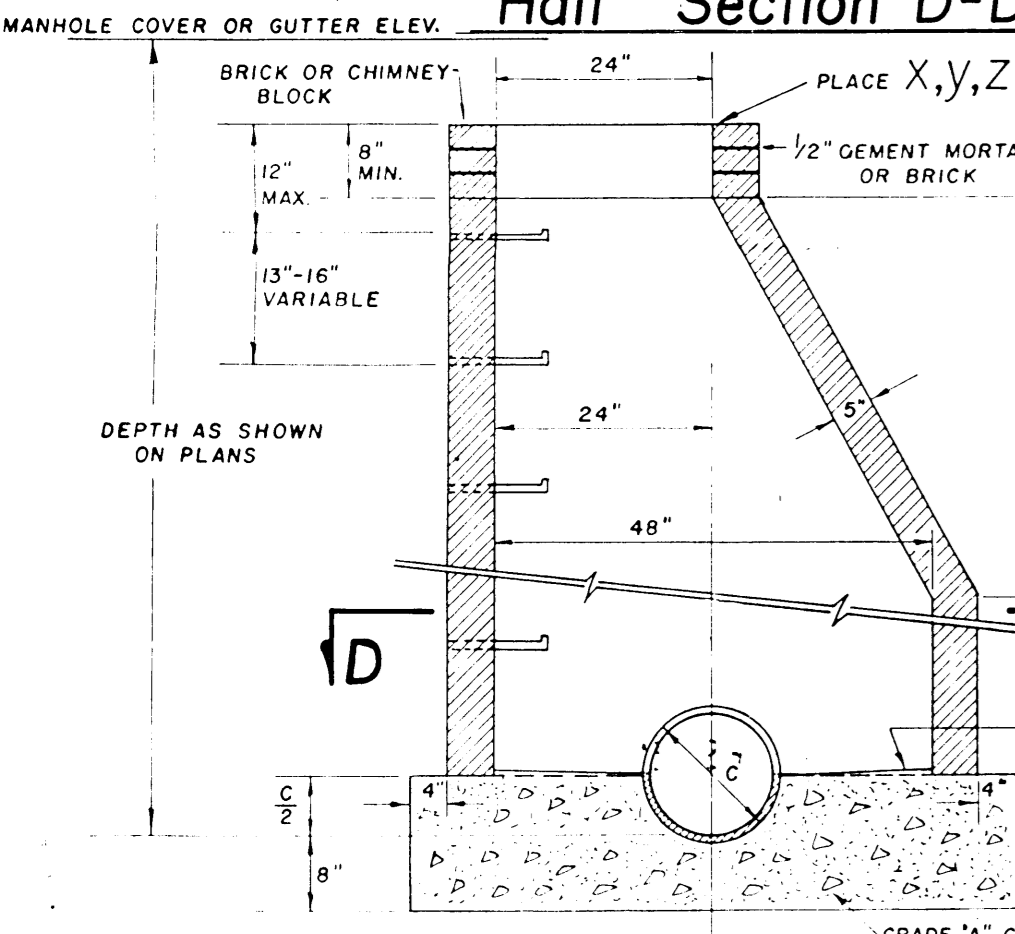
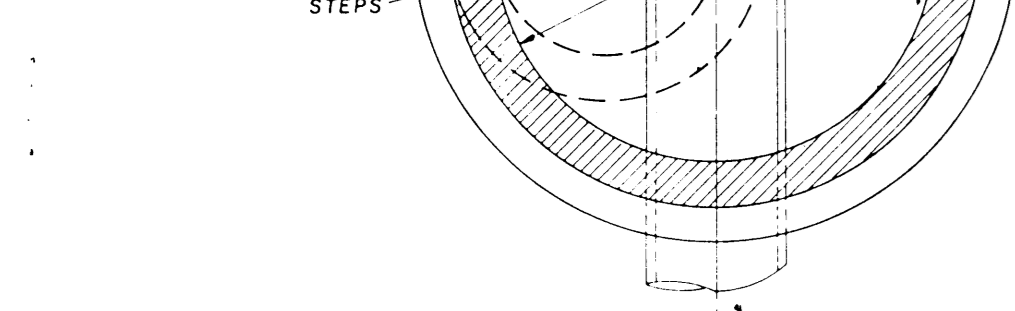
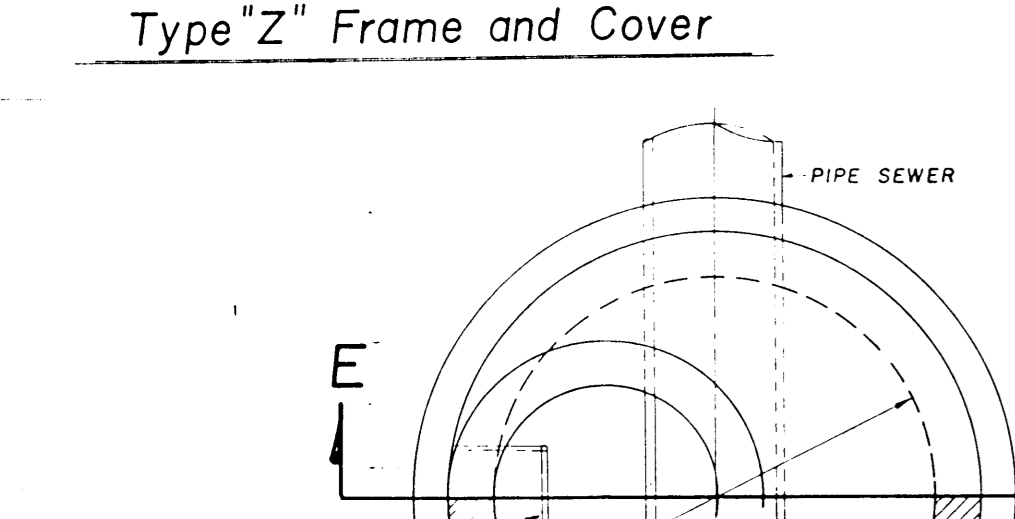
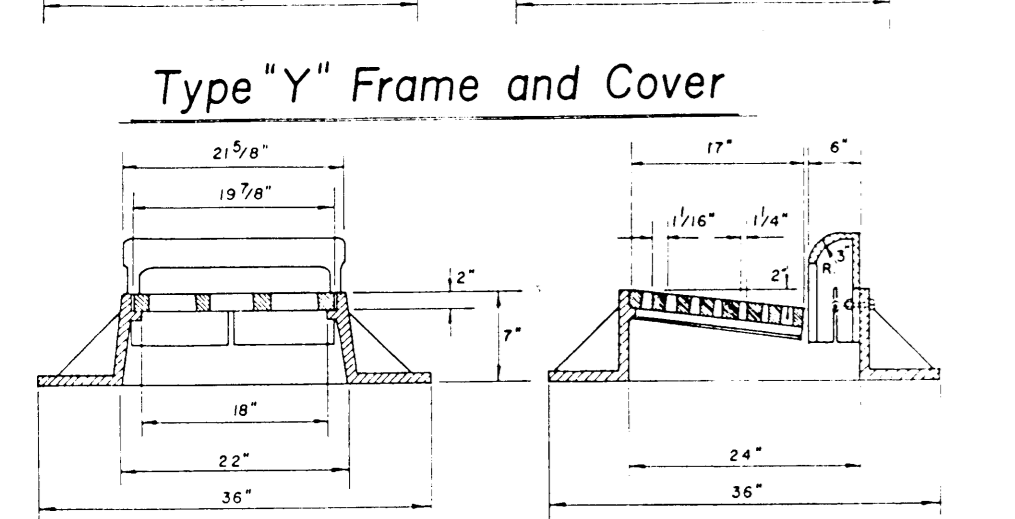
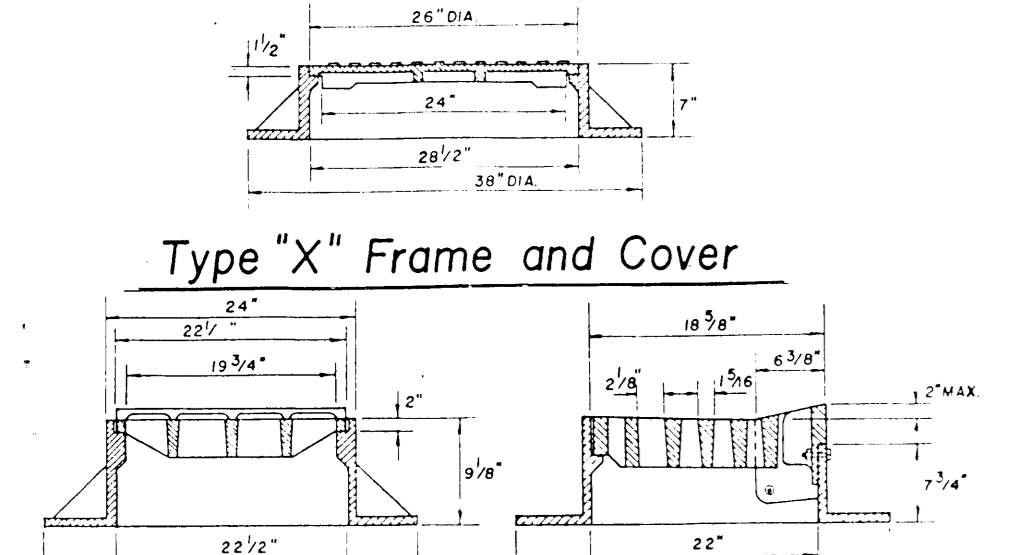
SET FRAME ELEVATION 2" LOWER THAN ELEVATION INDICATED ON PLAN.

THE CONTRACTOR MAY MARK ALL FROM THE STREET SIDE OF THE PROPERTY LINE. THE FIRE END OF THE EXPOSED END OF THE MANHOLE SHALL BE REINFORCED WITH THE MANHOLE WALK.

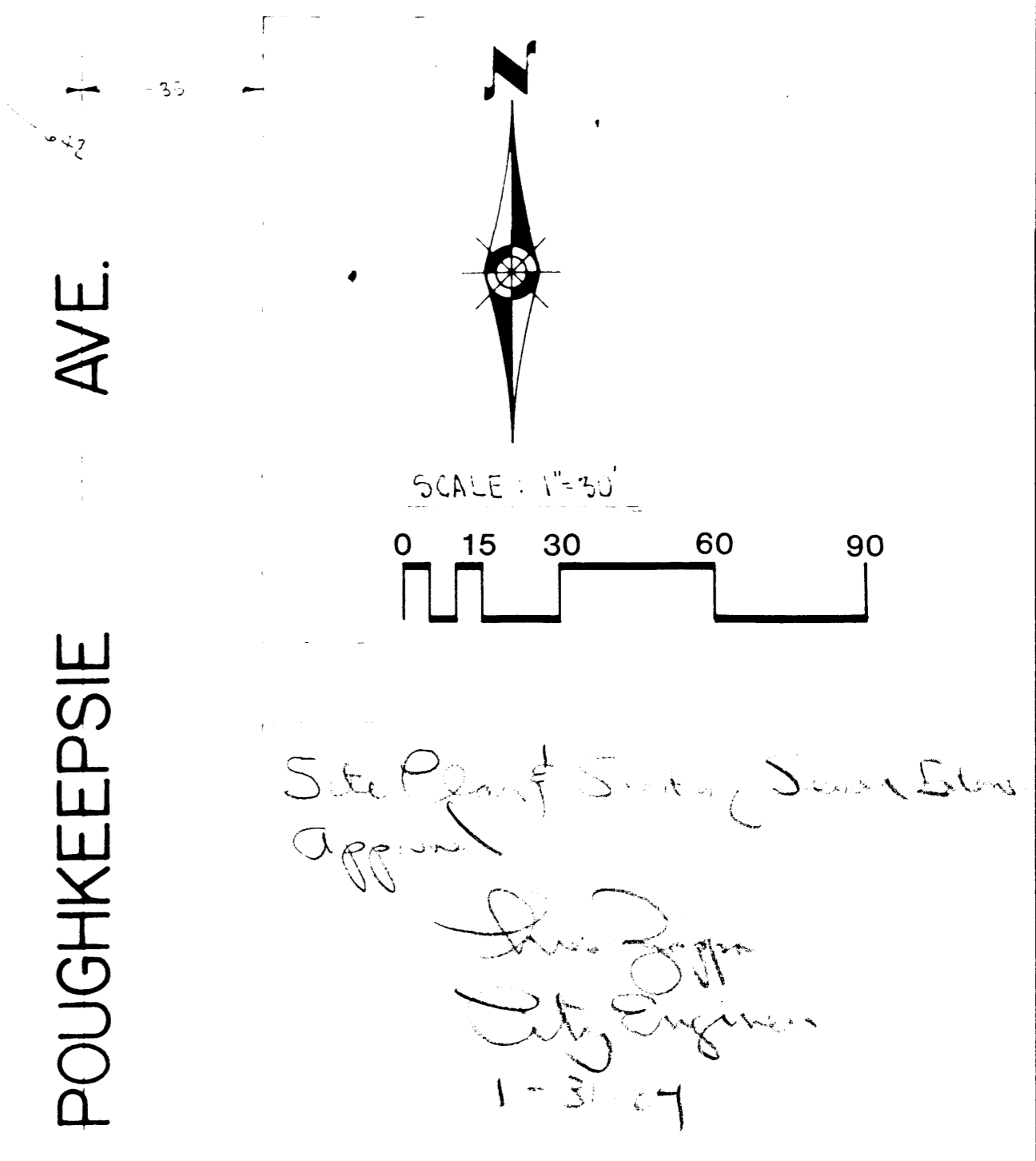
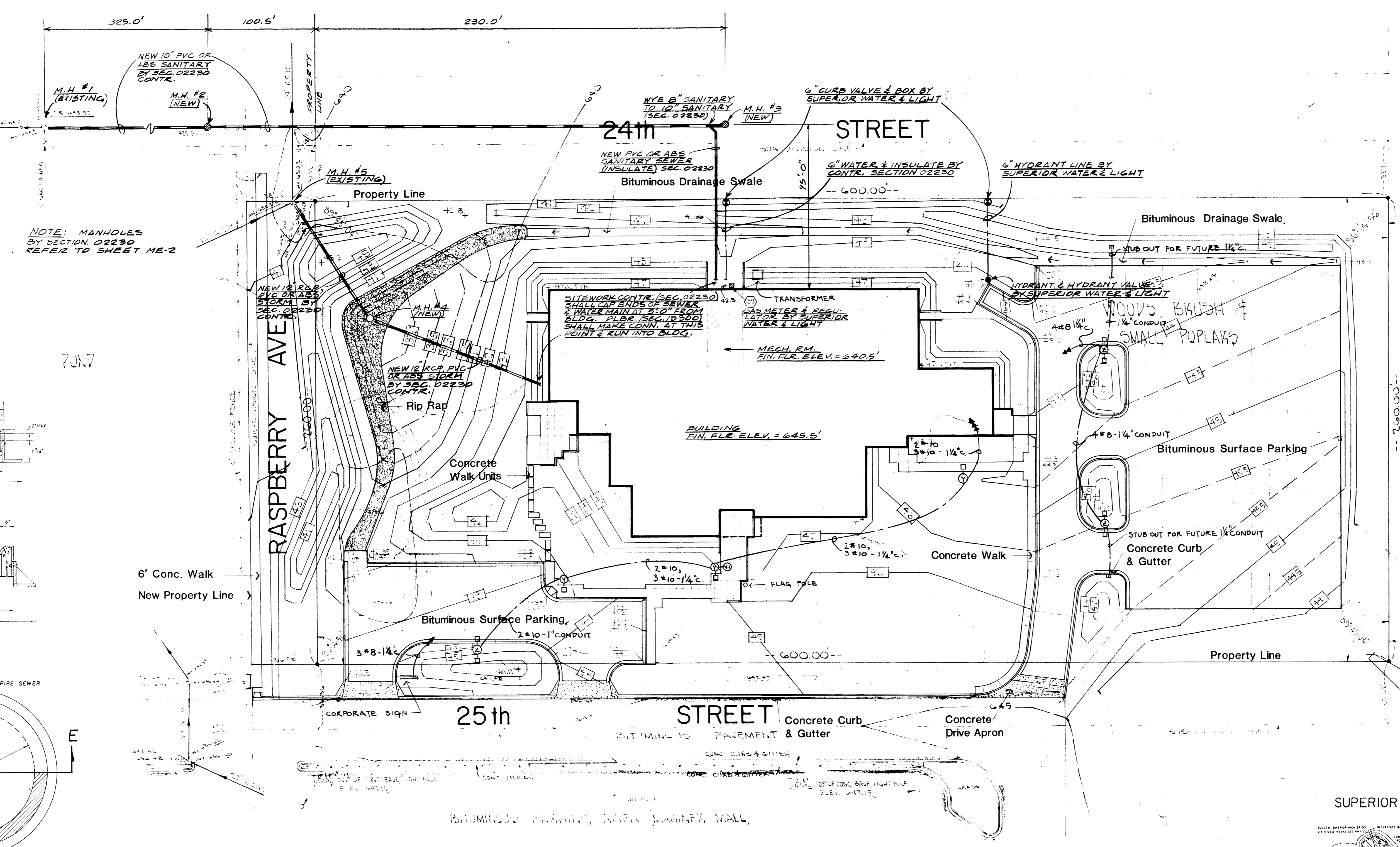
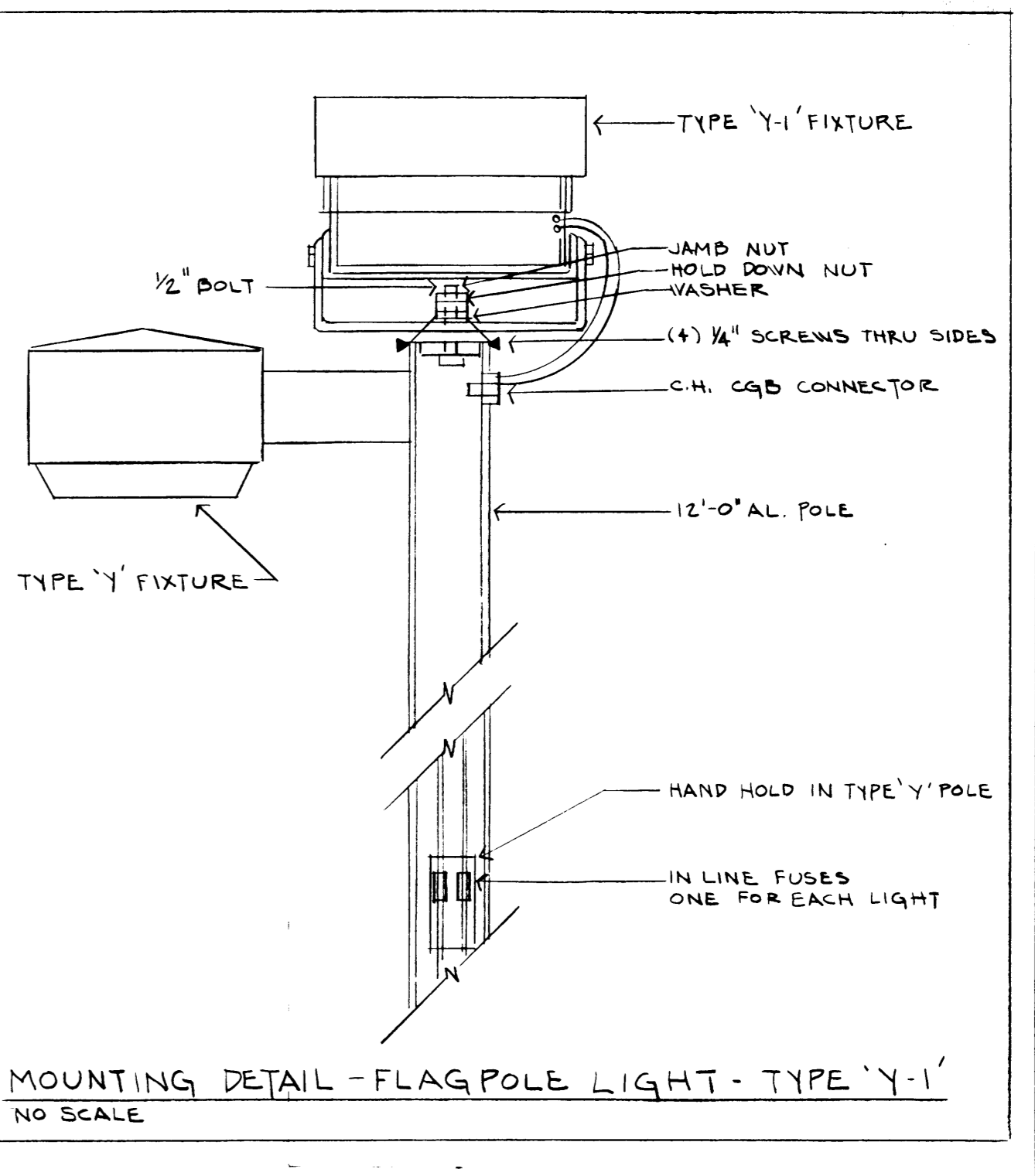
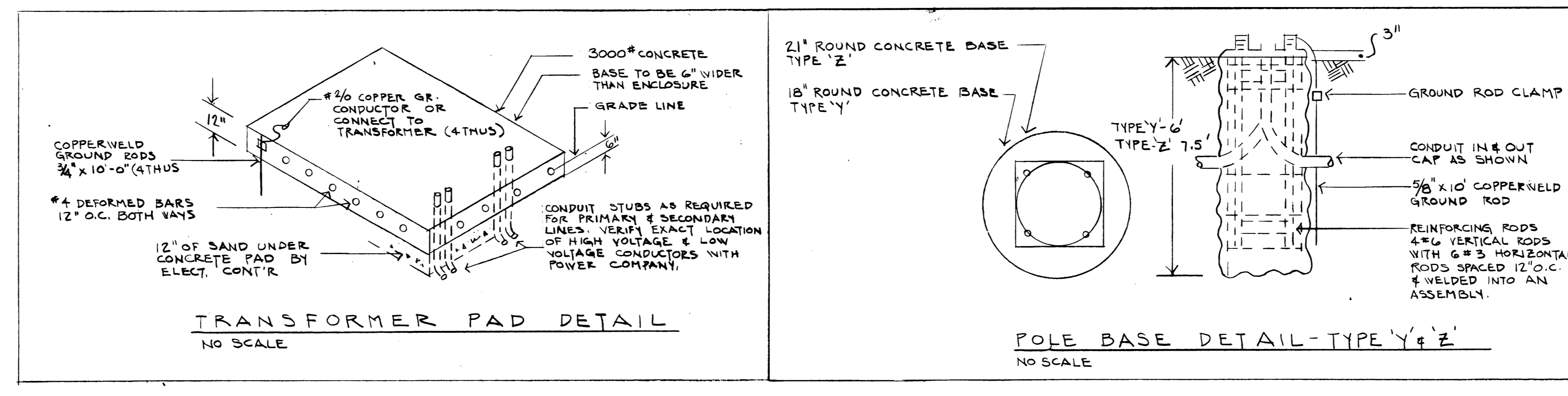
MANHOLE STEPS: STEPS MEETING THE FOLLOWING REQUIREMENTS SHALL BE USED: 1. ALL STEPS SHALL BE 12" O.C. FROM THE WALK TO THE WALK. 2. CLEAR DISTANCE OF 14" FROM THE WALK AT THE POINT OF DISCONTINUITY.

MANHOLE WALL EMBEDMENT OF 37" IN PRECAST MANHOLE. TOP OF STEP SHALL HAVE A NON-SLIP SURFACE AND BE FINISHED BY GRINDING WITH A FINISH OF 30" CLEAR BETWEEN GRINDS TO PREVENT FOOT SLIPPING OFF THE EDGE. GRINDS SHALL BE A MINIMUM OF 30" HIGH BY 3/4" WIDE HAVING A MINIMUM THICKNESS OF 20". STEPS SHALL BE CAPABLE OF SUPPORTING A CONCENTRATED LOAD OF 200 LBS. FINISH METAL STEPS NOT PAINTED OR TREATED TO RESIST CORROSION SHALL HAVE A MINIMUM CROSS SECTIONAL DIMENSION OF 1 1/2".

SOLID ALUMINUM STEPS SHALL HAVE A MINIMUM CROSS SECTIONAL DIMENSION OF 0.75". ALUMINUM SURFACES TO BE BRUSHED IN FINISH.

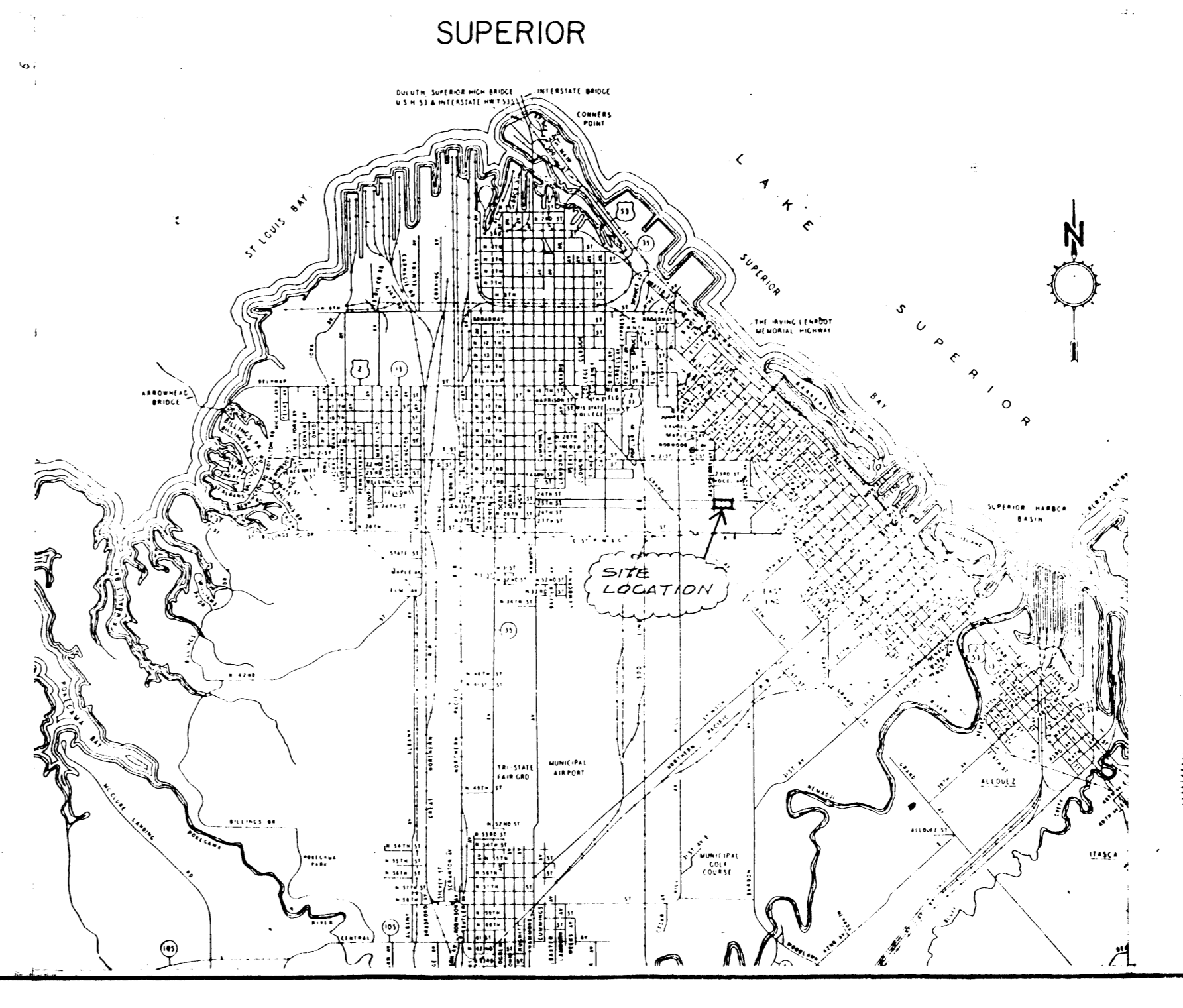


Section E-E  
Special Manhole Detail



**LEGEND**

Existing Spot Elevation	46.0
Proposed Spot Elevation	top of curb top of pvt.
Existing Contour	46.0
Proposed Contour	46.0
Concrete Curb & Gutter	46.0



LAKEHEAD  
PIPE LINE CO.  
OFFICE  
BUILDING

superior wisc



MECH. &  
ELECTRICAL  
SITEWORK

Architecture  
Planning  
Engineering  
Landscape  
Architecture

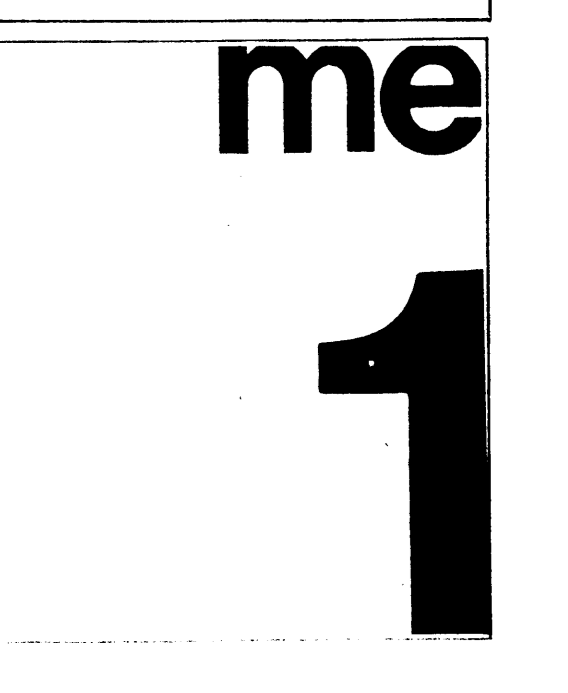
704 East Howard Street  
Hibbing, Minnesota 55746  
(218) 263-6868

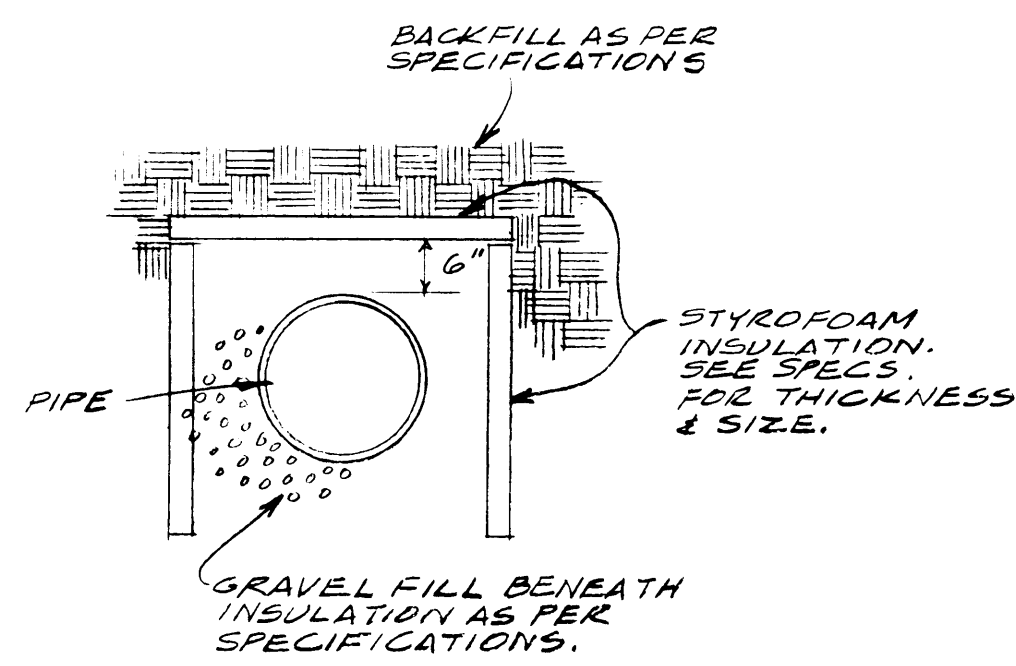
126 East Superior Street  
Duluth, Minnesota 55802  
(218) 727-8481

Consultants

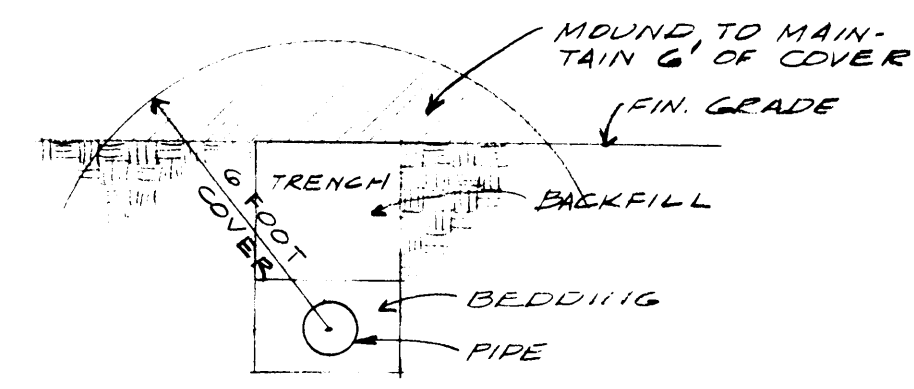
Revisions

project no 82-076  
date 12 JAN 1984  
drawn VA 4 NLS  
I hereby certify that this plan, specification or report was prepared by me or under my direct supervision, and that I am a duly registered engineer under the laws of the State of WI.  
Daniel Whelan  
1-12-84 Reg. No.  
E-15533



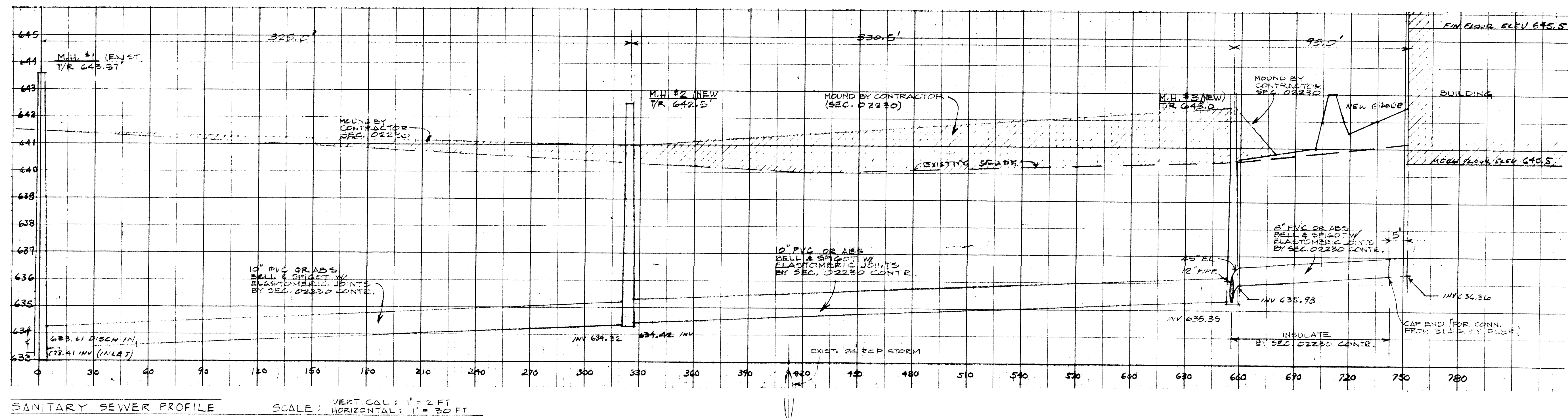


UNDERGROUND PIPE INSULATION  
NO SCALE (BY SECTION 02230 CONTR.)

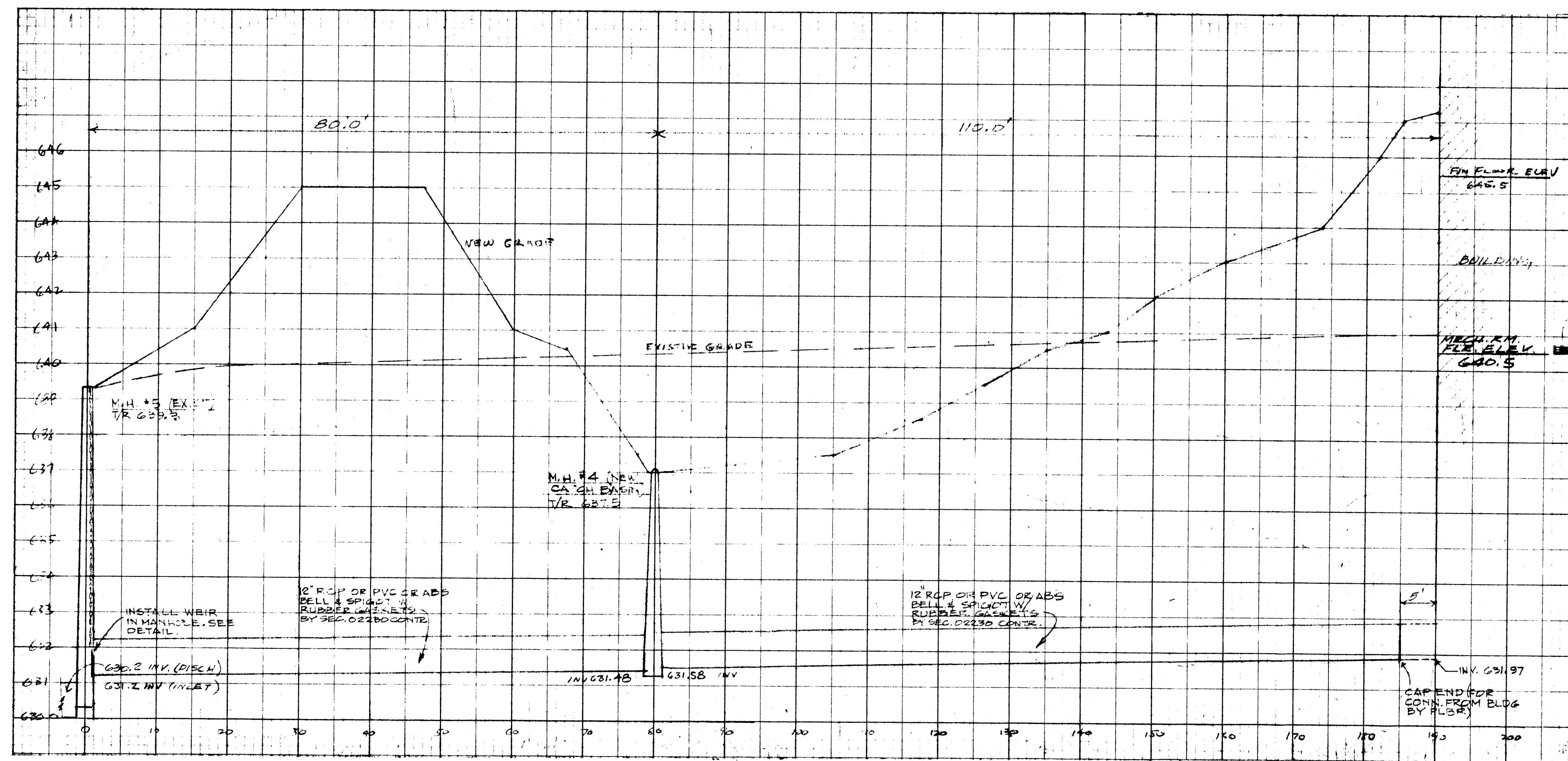


SANITARY SEWER MOUNDING  
NO SCALE (BY SEC. 02230 CONTR.)

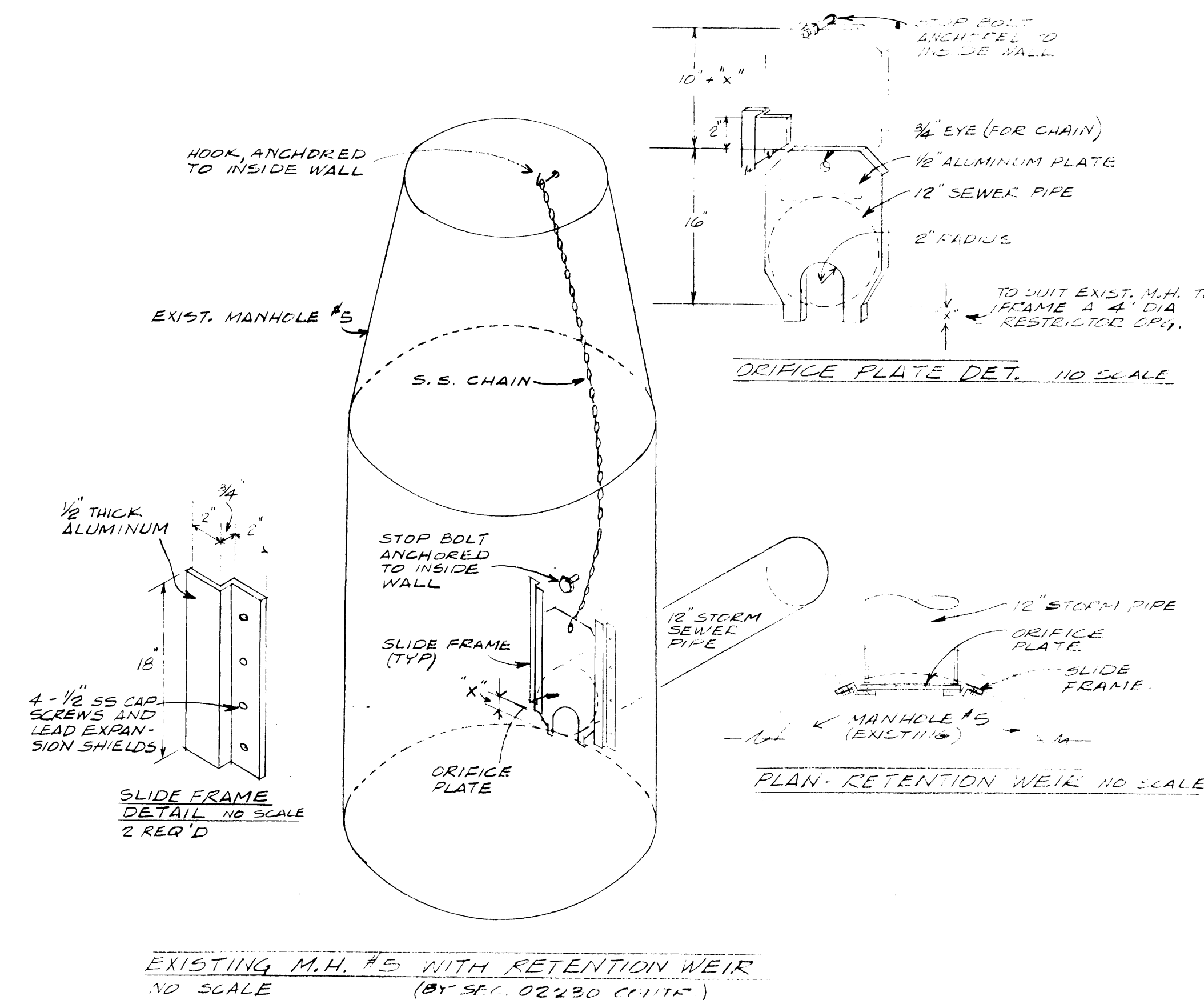
NOTE (SECTION 02230 CONTR.)  
REFER TO "STANDARD SPECIFICATIONS FOR SEWER & WATER CONSTRUCTION IN WISCONSIN" FOR THE FOLLOWING DETAILS:  
PRECAST MANHOLE - FILE #13  
SEE SPEC. SEC. 10200 FOR FRAME & COVER FOR MANHOLE AND CATCH BASIN.  
STANDARD SECTION (CLASS "C" BEDDING) - FILE #3  
DELETE THE WORDS "OR GREY"  
CHANGE "FIXED PRICES" TO "UNIT PRICES".



SANITARY SEWER PROFILE SCALE: VERTICAL: 1" = 2 FT HORIZONTAL: 1" = 30 FT



STORM SEWER PROFILE SCALE: VERTICAL: 1" = 2 FT HORIZONTAL: 1" = 10 FT



LAKEHEAD  
PIPE LINE CO.  
OFFICE  
BUILDING

superior wisc

architectural  
resources inc

SEWER PROFILES  
SITEWORK  
DETAILS

Architecture  
Planning  
Engineering  
Landscape  
Architecture

704 East Howard Street  
Hibbing, Minnesota 55746  
(218) 263-6868

126 East Superior Street  
Duluth, Minnesota 55802  
(218) 727-8481

Consultants

Revisions

project no 82 076  
date 12 JAN 1984  
drawn VA  
I hereby certify that this plan, specification, or report was prepared by me, or under my direct supervision, and that I am a duly registered engineer under the laws of the State of WI.  
Small, Roberts  
1-12-84  
E. 12233

me  
2