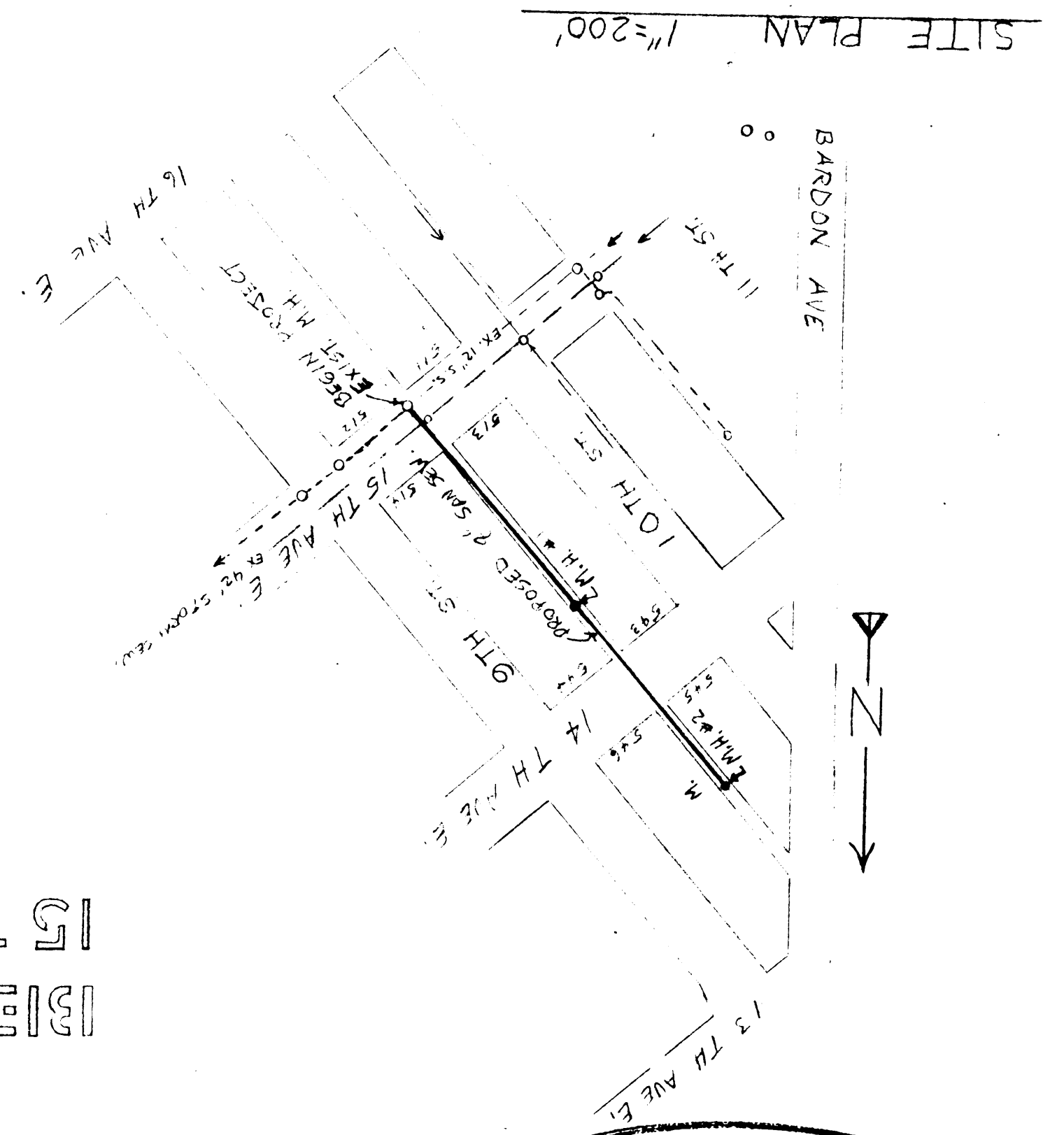


CITY OF SUPERIOR

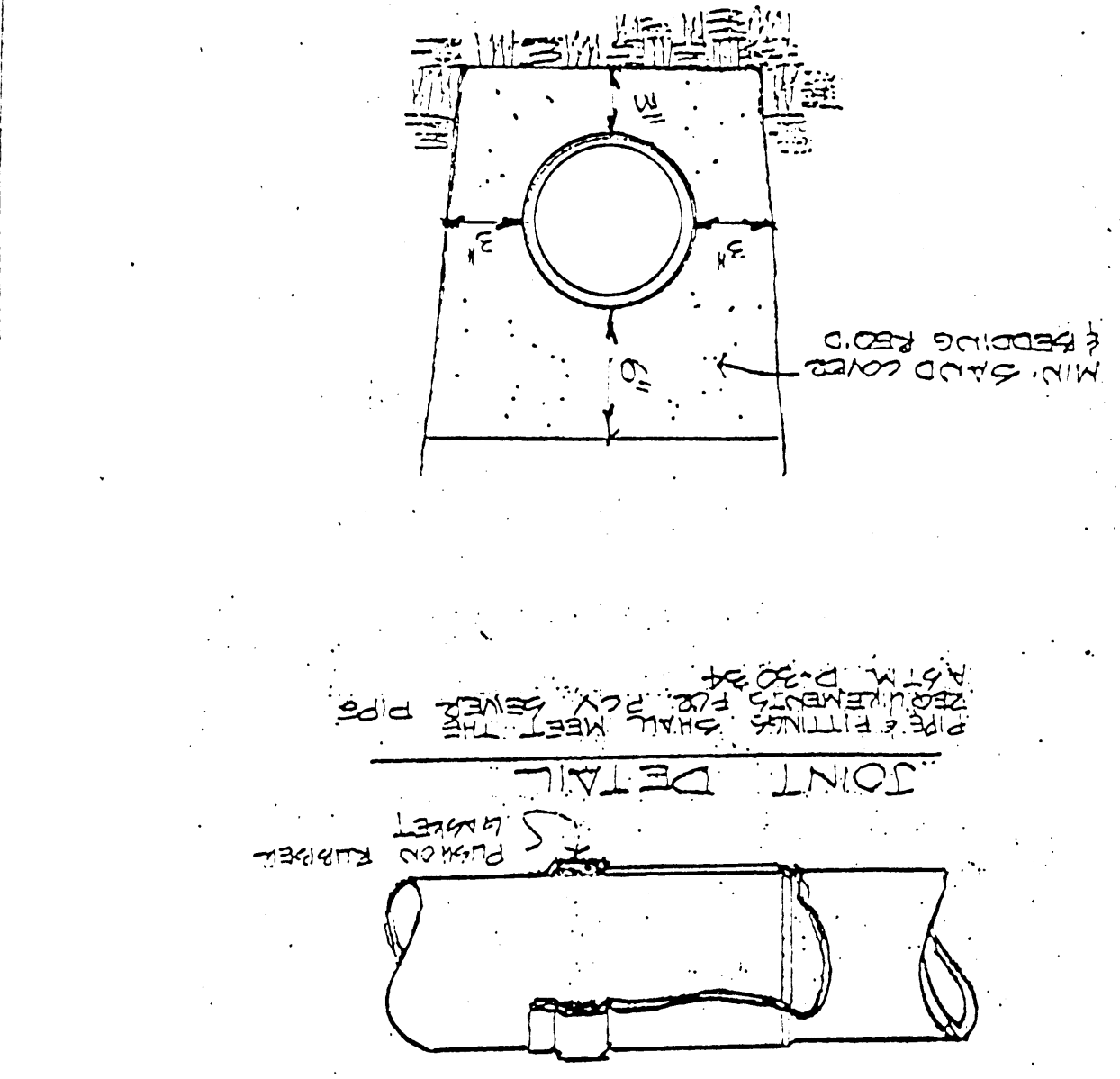
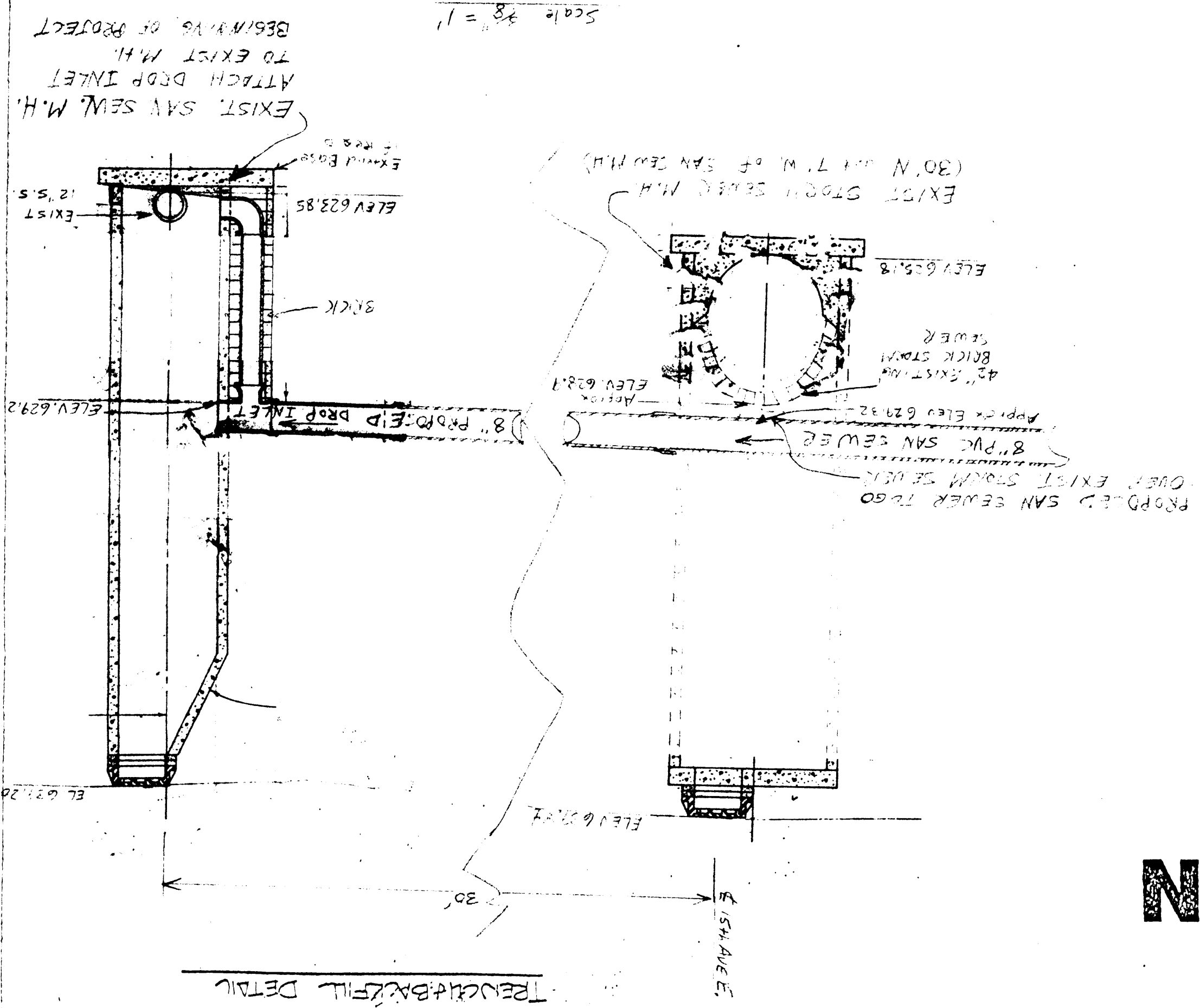
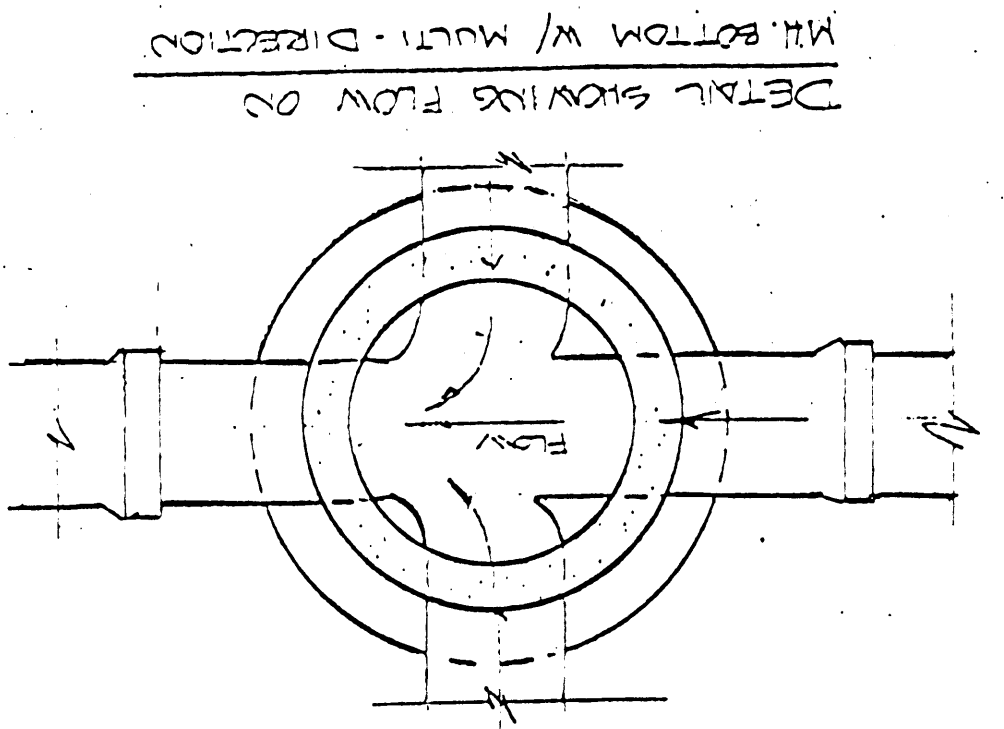
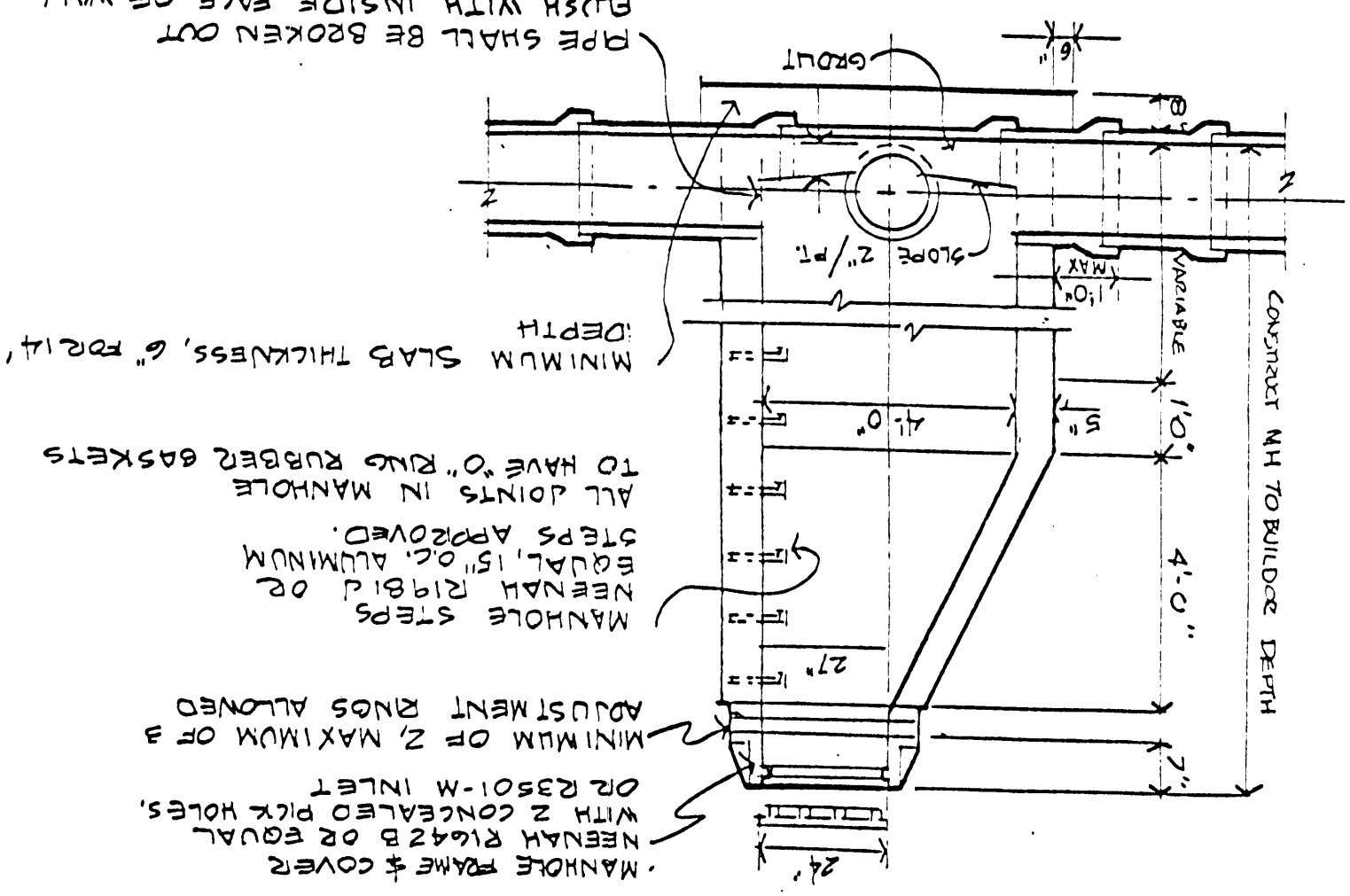
SANITARY SEWER EXTENSION

BETWEEN E. 9TH & 10TH STREETS 15TH - 13TH AVENUES EAST



CONSTRUCTION NOTES:
 Utilities shown on these plans are approximate locations only.
 Contractor is responsible for all utility locations.
 CONTACT Superior Water Light and Power Company for all water, gas, and electric utility locations.
 CONTACT Wisconsin Bell Telephone for all underground telephone cables.
 CONTACT Group K Cable T.V. for all cable T.V. lines.
 Contractor is responsible for coordination with all utility companies for all excavations, etc. for all underground utilities.
 Contractor is responsible for the cost of utility relocations unless specifically excluded elsewhere in the specifications.
 Contractor is responsible for all pavement crossings. Pavement shall be neatly sawcut. Subgrade and pavement shall be restored to the original condition.
 Contractor shall coordinate with the City of Superior Public Works Department for location of City owned storm and sanitary sewers or other utilities. Contractor shall coordinate with the City Plumbing Inspector for construction of sanitary sewers.

TYPICAL MANHOLE SECTION



APPROVE
Donald A. [Signature]
 CITY OF SUPERIOR
 SANITARY SEWER EXTENSION