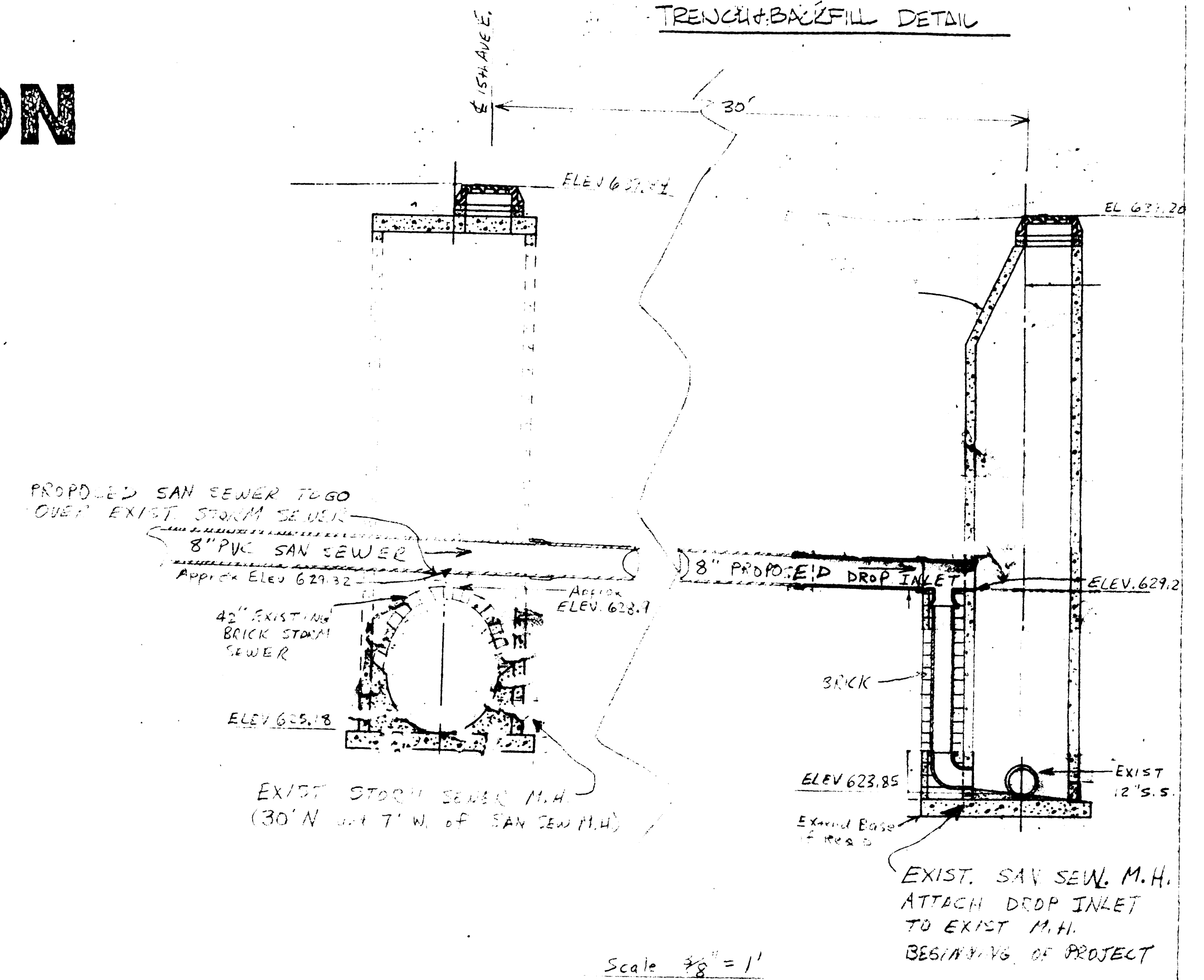
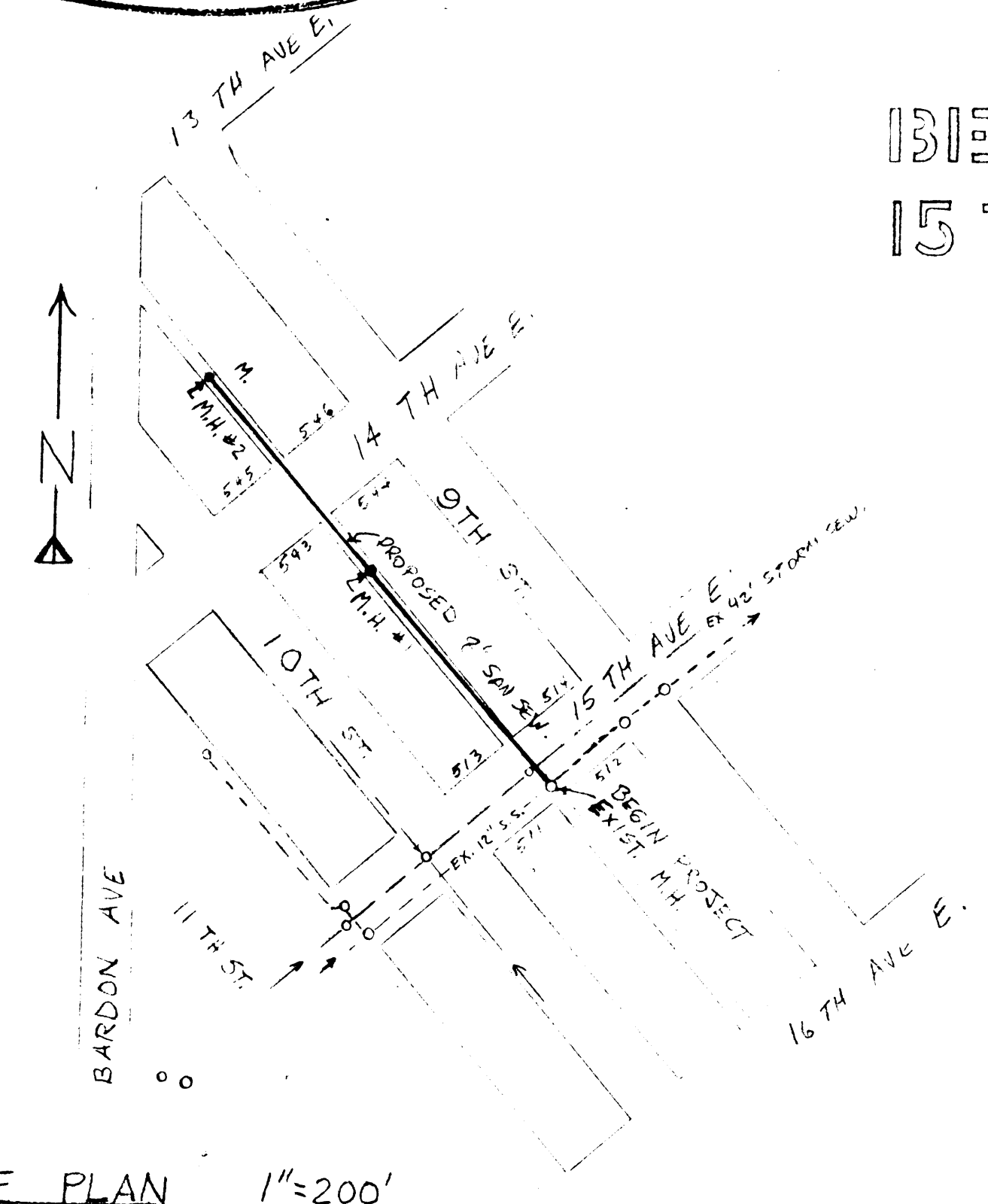


CITY OF SUPERIOR SANITARY SEWER EXTENSION

BETWEEN E. 9TH & 10TH STREETS
15TH - 13TH AVENUES EAST



CONSTRUCTION NOTES:
 Utilities shown on these plans are approximate locations only. Contractor is responsible for all utility locations.
 CONTACT Superior Water Light and Power Company for all water, gas, and electric utility locations.
 CONTACT Wisconsin Bell Telephone for all underground telephone cables.
 CONTACT Group W Cable T.V. for all cable T.V. lines.
 Contractor is responsible for coordination with all utility companies for all relocations, etc. for all underground or overhead utilities. Contractor is responsible for the cost of utility relocations unless specifically excluded elsewhere in the specifications.
 Contractor is responsible for all pavement crossings. Pavement shall be neatly sawcut. Subgrade and pavement shall be restored to the original condition.
 Contractor shall coordinate with the City of Superior Public Works Department for location of City owned storm and sanitary sewers or other facilities. Contractor shall coordinate with the City Plumbing Inspector for construction of sanitary sewers.

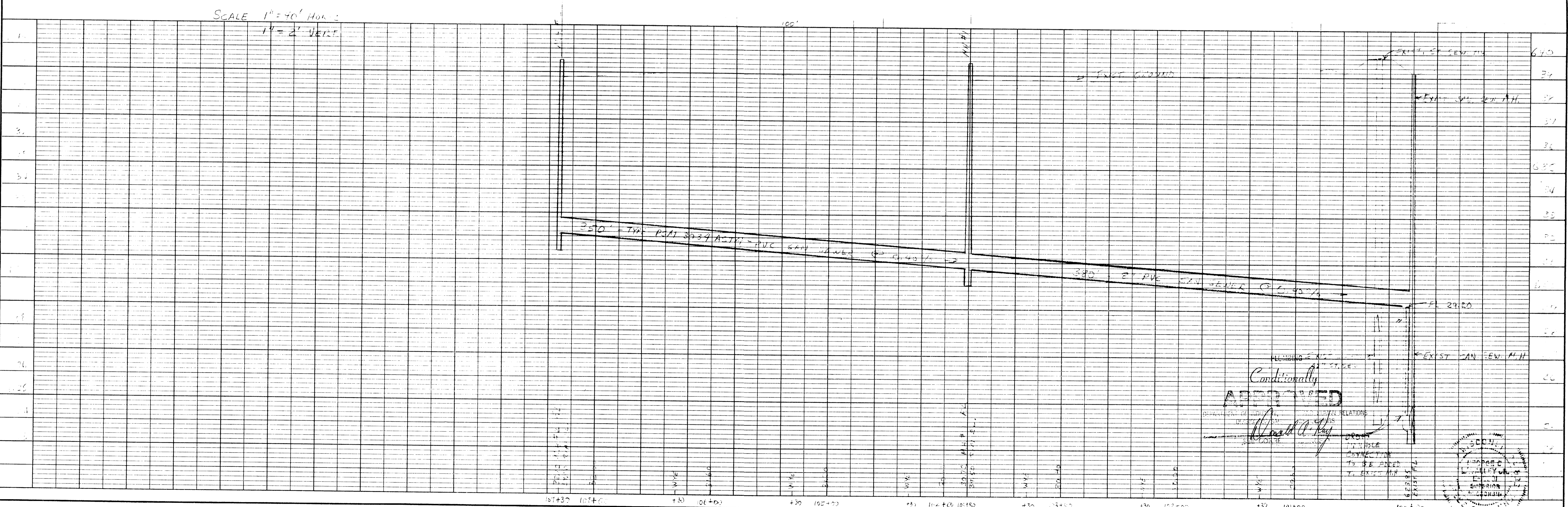
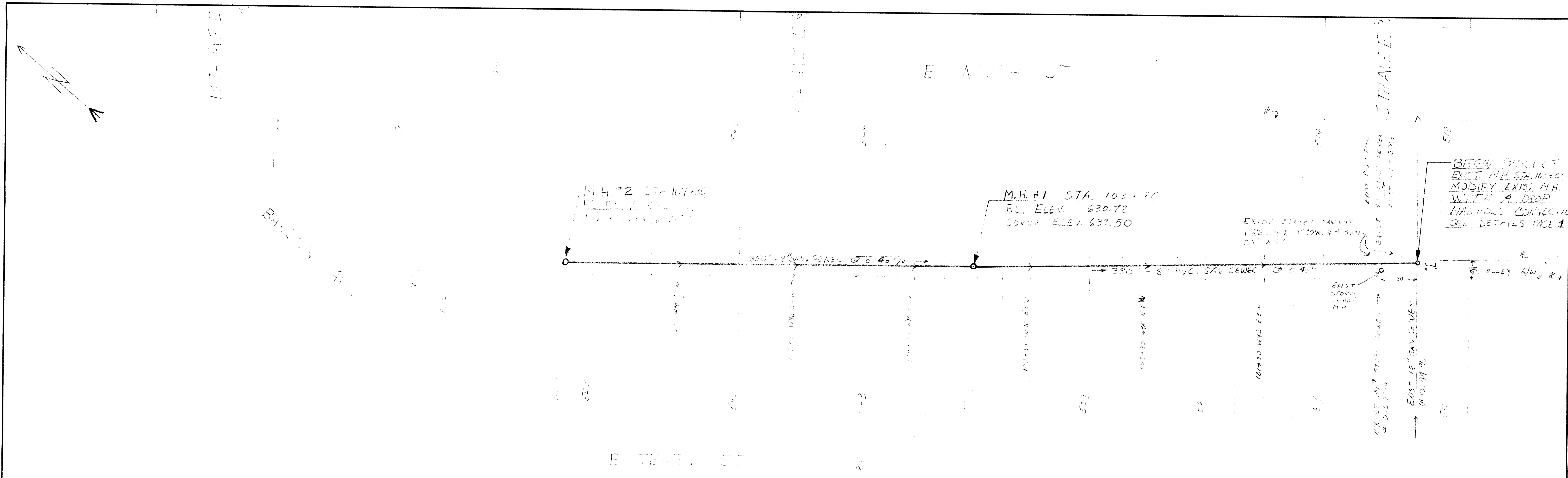
PLANNING
 Conditionally
 APPROVE
 [Signature]
 CITY ENGINEER

CITY OF SUPERIOR
 SANITARY SEWER EXTENSION



DATE: _____
 BY: _____
 SURVEYED: _____
 PLAN NOTE BOOK: _____
 ALIGNED CHECKED: _____
 RT. OF WAY CHECKED: _____
 No. _____

DATE: _____
 BY: _____
 SURVEYED: _____
 PROFILE NOTE BOOK: _____
 GRADE CHECKED: _____
 STAKE PLACEMENTS CHECKED: _____
 No. _____



Conditionally
APPROVED
 DEPARTMENT OF HIGHWAYS
 DIVISION OF HIGHWAY CONSTRUCTION
 [Signature]
 PROJECT NO. 100+00
 SHEET NO. 100+00
 DATE: _____