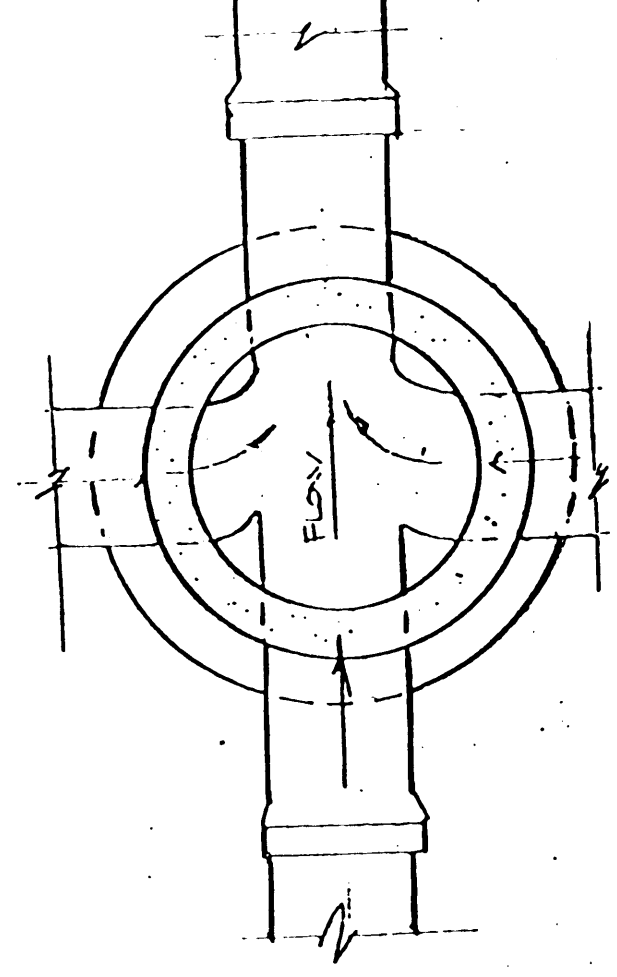
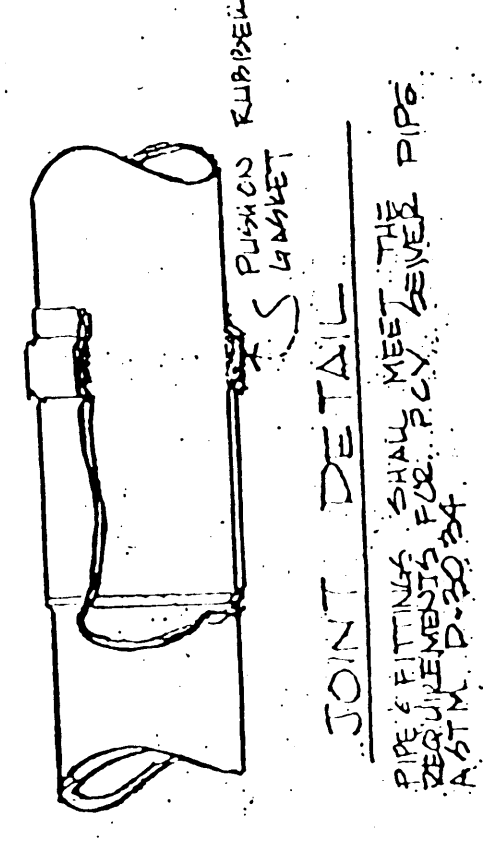


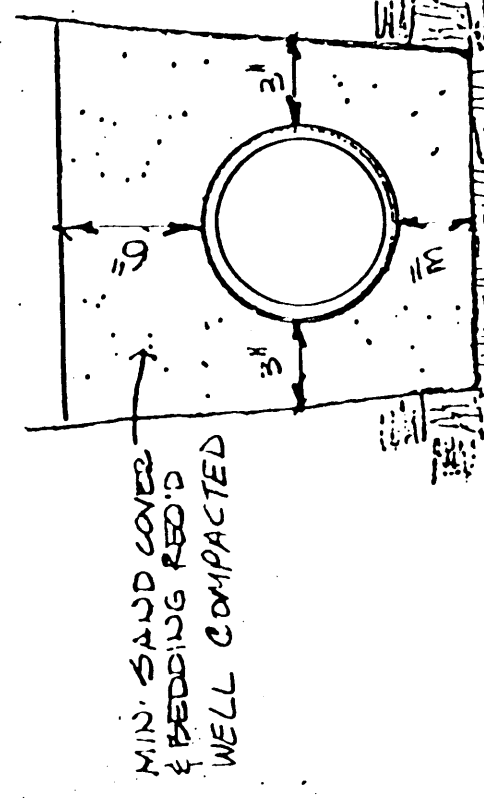
TYPICAL MANHOLE SECTION



DETAIL SHOWING FLOW ON THE BOTTOM OF THE MANHOLE WITH MULTIPLE INLETS AND ONE OUTLET



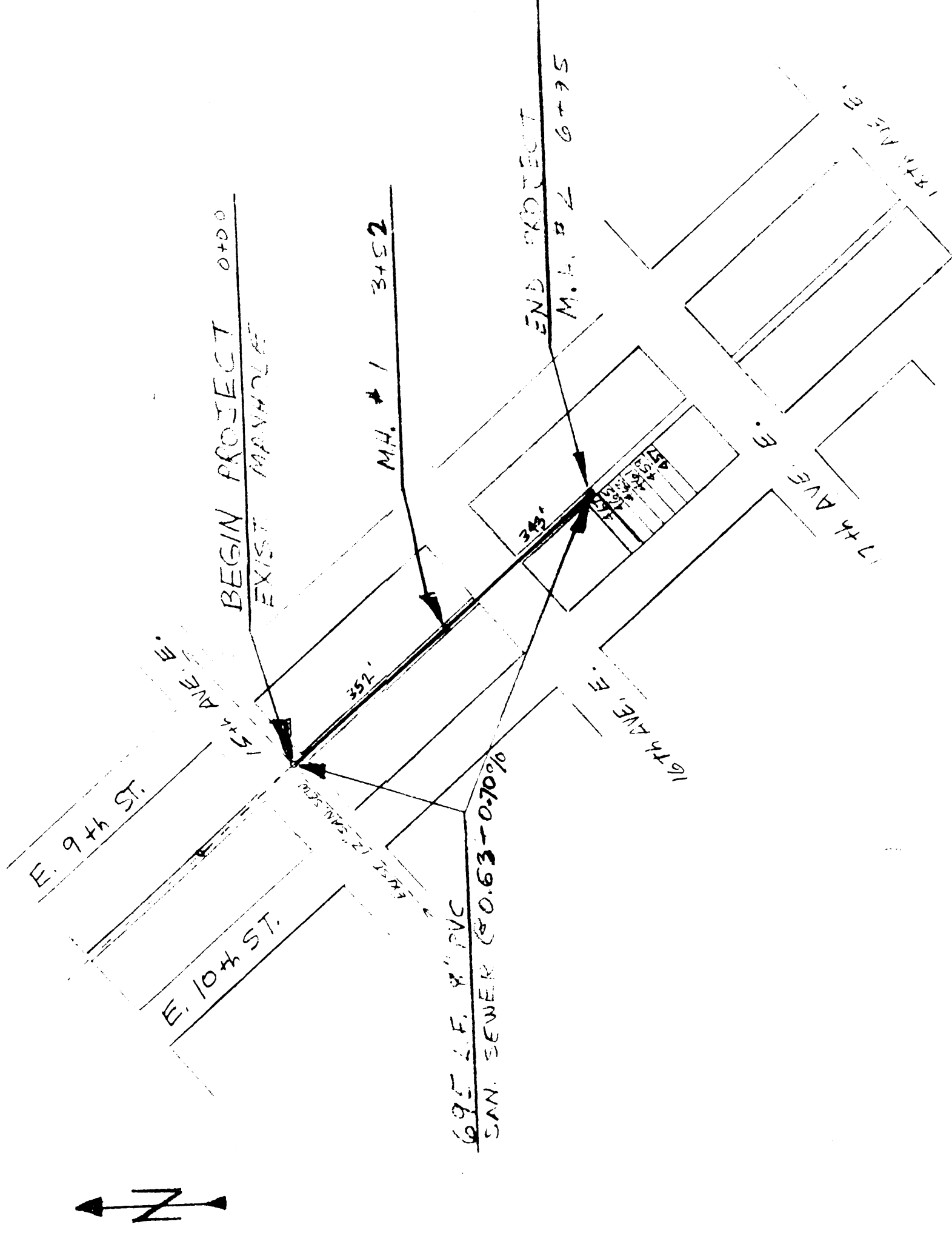
JOINT DETAIL



TRENCH BACKFILL DETAIL

**CITY OF SUPERIOR**  
 SANITARY SEWER EXTENSION

15th - 17th AVE. E. BTM. E. 9th ST. & E. 10th ST.



LOCATION PLAN

SCALE: 1" = 200'

CONSTRUCTION NOTES:  
 Utilities shown on these plans are approximate locations only. Contractor is responsible for all utility locations.  
 CONTACT Superior Water Light and Power Company for all water, gas, and electric utility locations.  
 CONTACT Wisconsin Bell Telephone for all underground telephone cables.

CONTACT Group & Cable T.V. for all cable T.V. lines.  
 Contractor is responsible for coordination with all utility companies for all relocations of underground or overhead utilities.  
 Contractor is responsible for the cost of utility relocations unless specifically excluded elsewhere in the specifications at crossings. Pavement shall be neatly sawcut. Subgrade and pavement shall be restored to the original condition.  
 Contractor shall coordinate with the City of Superior Public Works Department for location of City of Superior Sewers or other facilities. Contractor shall coordinate with the City Planning Inspector for construction of sanitary sewers.

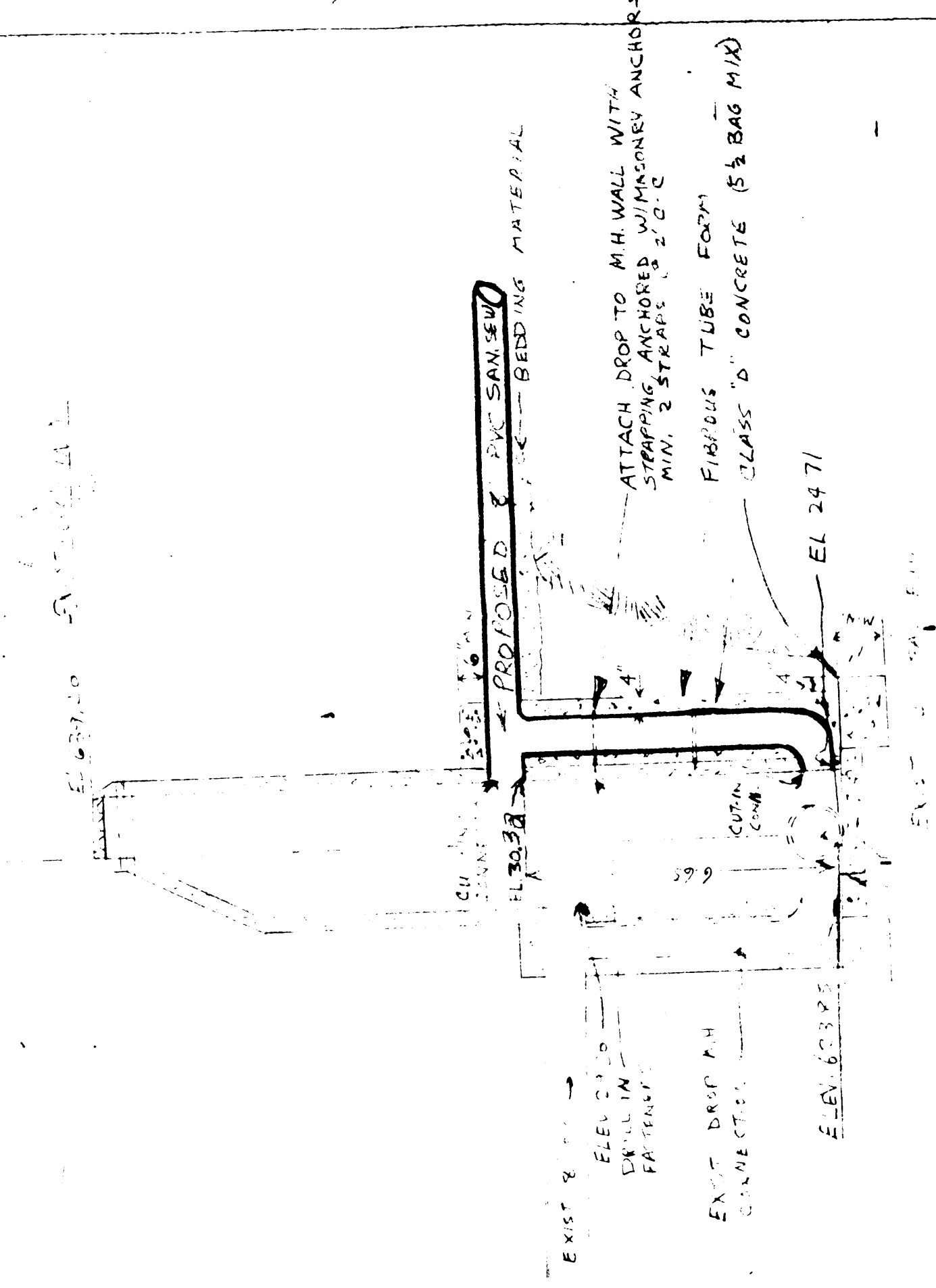
DETAIL OF ENTRANCE TO M.H.

SHOW A DROP MANHOLE CONNECTIONS (CONTRACTOR PROVIDED)  
 SCALE: 1" = 1'

CITY OF SUPERIOR  
 SANITARY SEWER EXTENSION  
 FOR 15th & 17th AVE. E. 15th - 17th E. 10th ST.



As Built 10-28-91  
 SHEET 1 of 2



ELEVATION OF M.H.