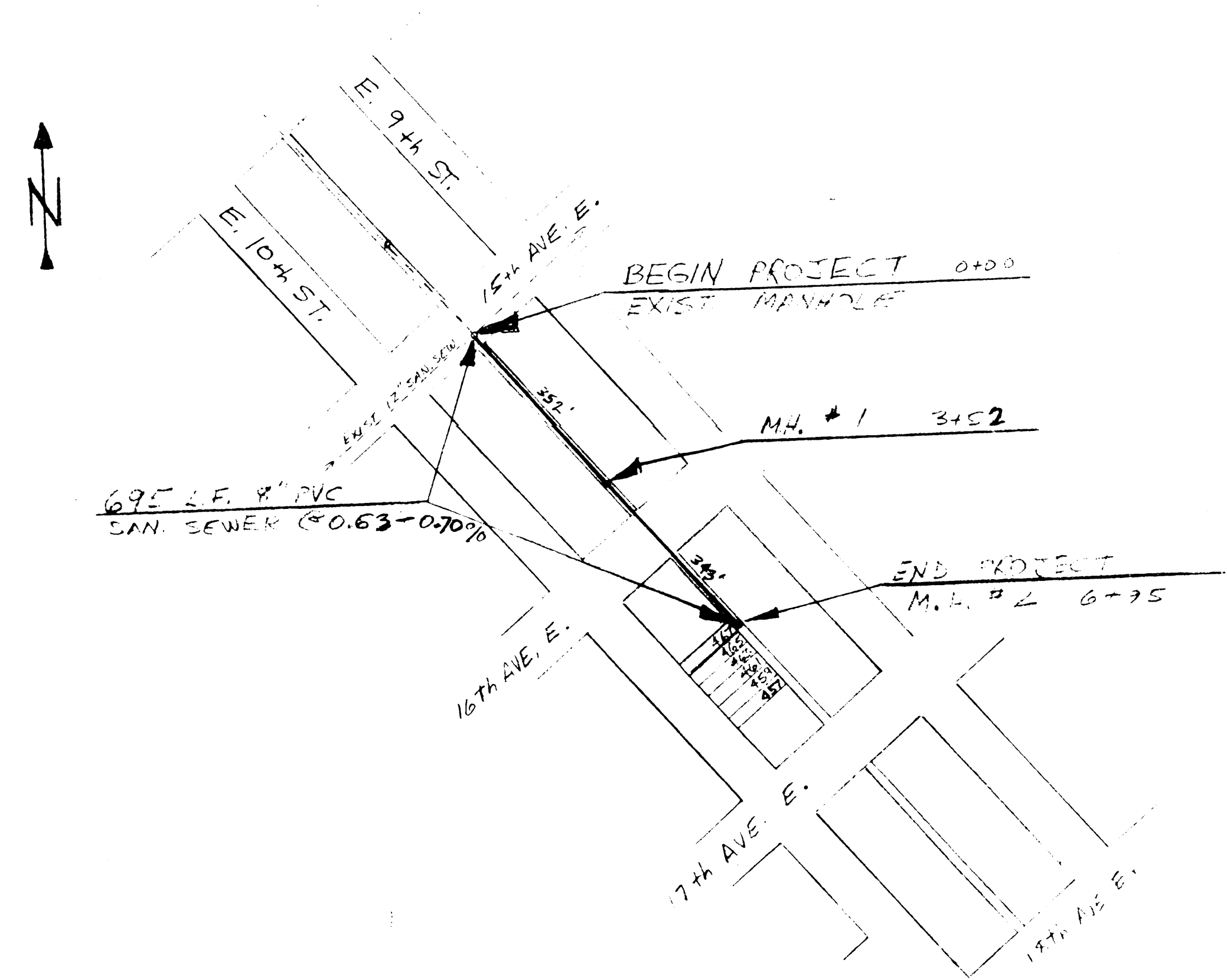
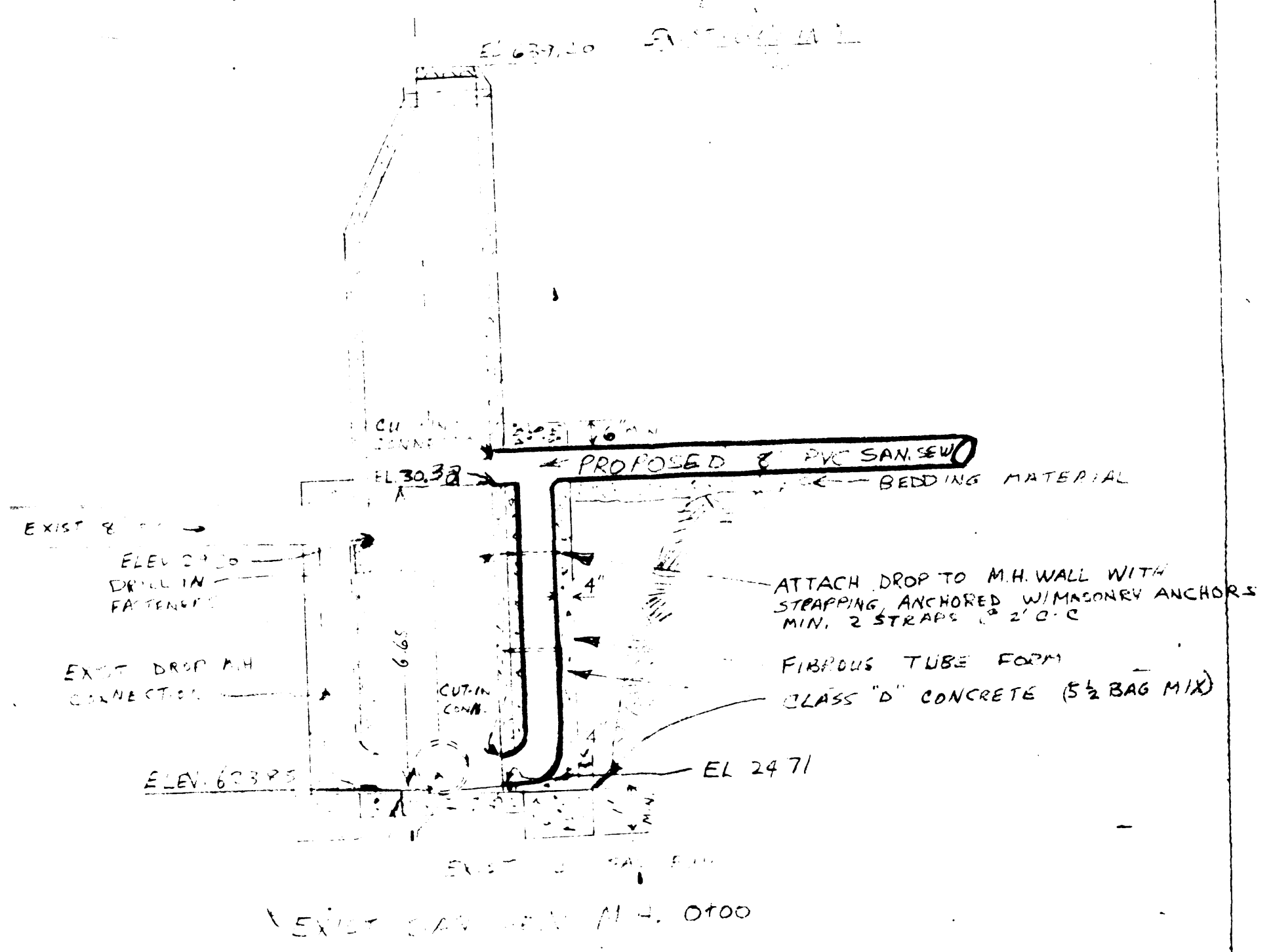


CITY OF SUPERIOR
 15th - 17th AVE. E. BTN. E. 9th ST. & E. 10th ST.
SANITARY SEWER EXTENSION



LOCATION PLAN
 SCALE: 1" = 200'

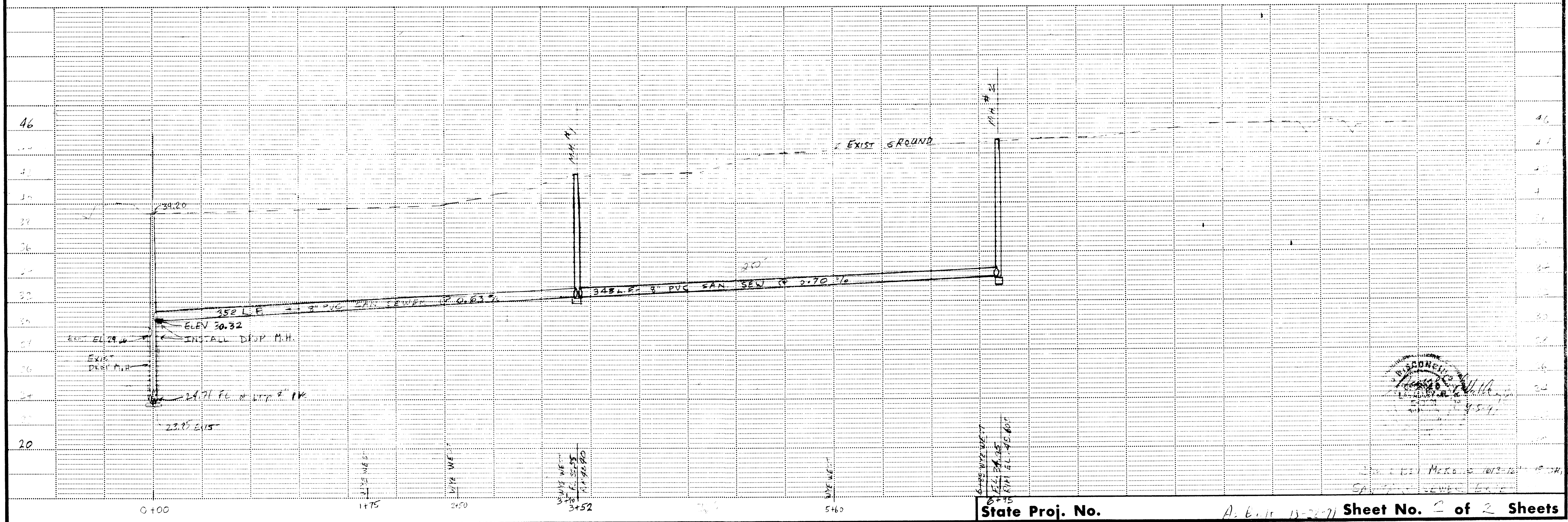
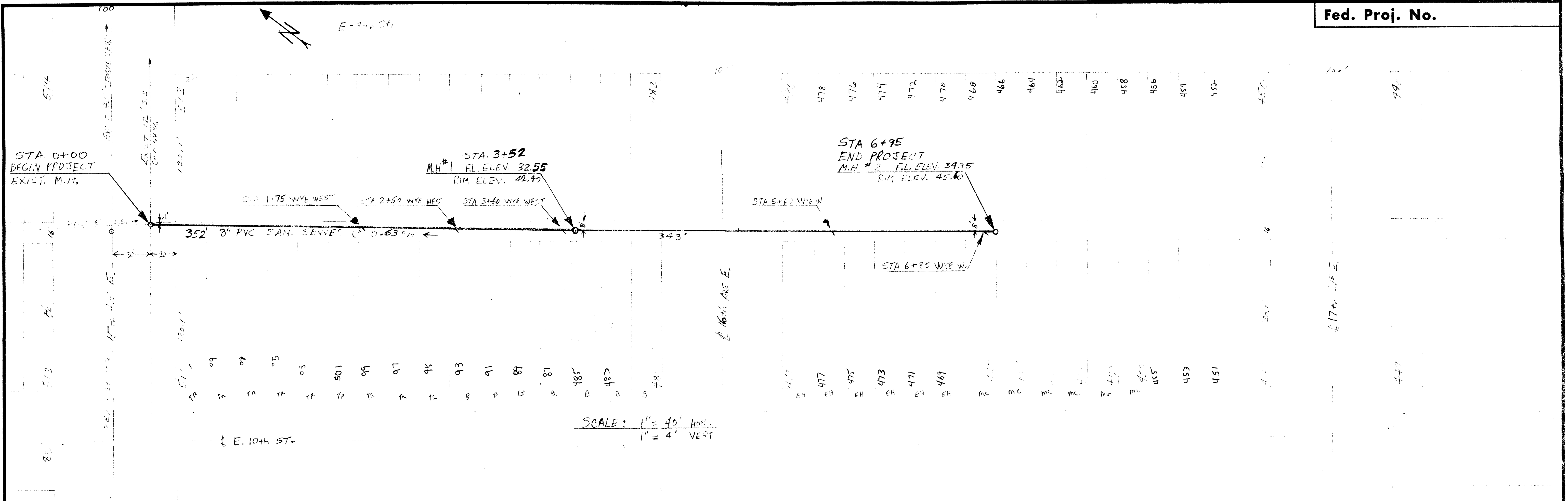


DETAIL OF EXISTING M.H.
 SCALE: 1" = 20'
 CITY OF SUPERIOR
 SANITARY SEWER EXTENSION
 FOR JIM & BEV McKone 1613-1623 E. 10th St.



As Built 10-28-91
 SHEET 1 of 2

CONSTRUCTION NOTES:
 Utilities shown on these plans are approximate locations only. Contractor is responsible for all utility locations.
 CONTACT Superior Water Light and Power Company for all water, gas, and electric utility locations.
 CONTACT Wisconsin Bell Telephone for all underground telephone cables.
 CONTACT Group W Cable T.V. for all cable T.V. lines.
 Contractor is responsible for coordination with all utility companies for all relocations, etc. for all underground or overhead utilities.
 Contractor is responsible for the cost of utility relocations unless specifically excluded elsewhere in the specifications.
 Contractor is responsible for all pavement crossings. Pavement shall be neatly sawcut. Subgrade and pavement shall be restored to the original condition.
 Contractor shall coordinate with the City of Superior Public Works Department for location of City owned storm and sanitary sewers or other facilities. Contractor shall coordinate with the City Plumbing Inspector for construction of sanitary sewers.



SINGLE PLAN - DOTTED
M. A. ROGERS CO. - MINNEAPOLIS, ST. PAUL

