

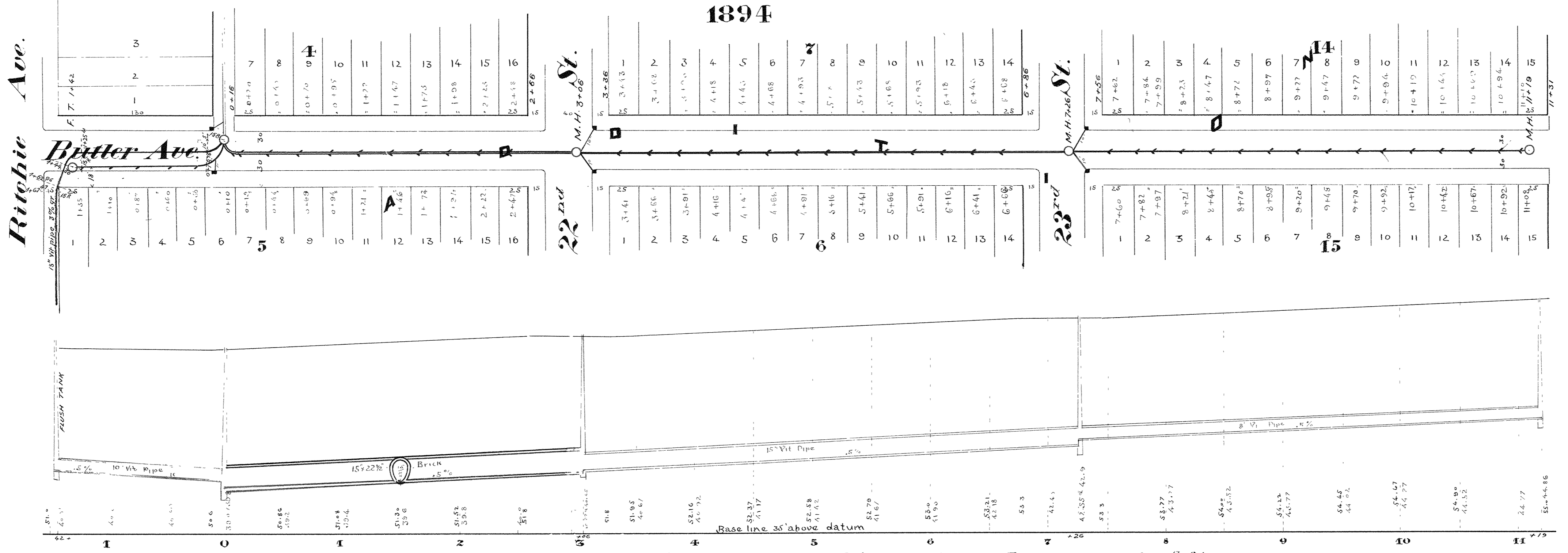
CITY OF SUPERIOR SEWER PLAN

Contract on Main Sewer let Apr. 16, 1891
 completed Sept. 30, 1891
 Contract on Lateral Sewer let Apr. 16, 1891
 completed Sept. 14, 1891
 Kirkland & Starkey, Contractor on Main
 Wolf
 James Nelson, Inspector - Main
 P.J. McHugh & Finlay McKenzie, Inspectors on Lateral
 E. B. Banks City Engineer

Scale { Horizontal 60ft. = 1 in
 Vertical 6" = 1'



Plan & Profile of Sewer in Alley South of Ritchie Ave. Tower to Butler Ave.



Plan & Profile of Sewer in Butler Ave. from Ritchie Ave. to Alley North of 24th St.

3B-1