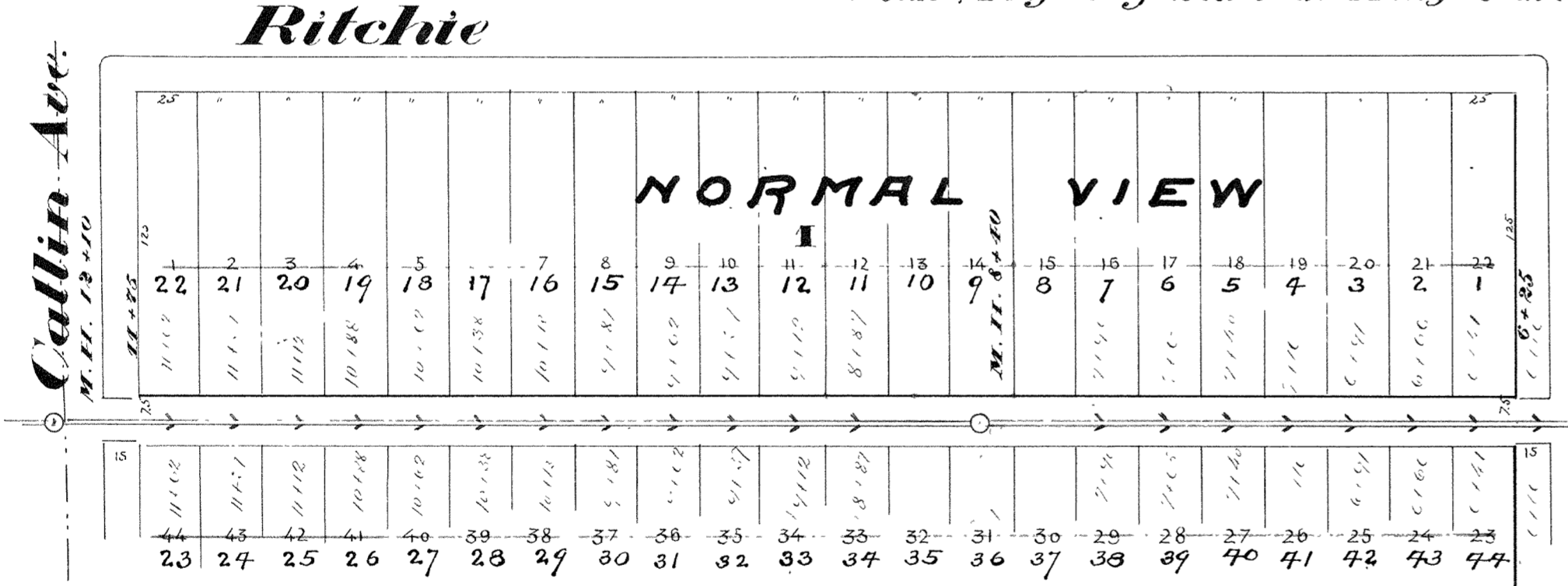
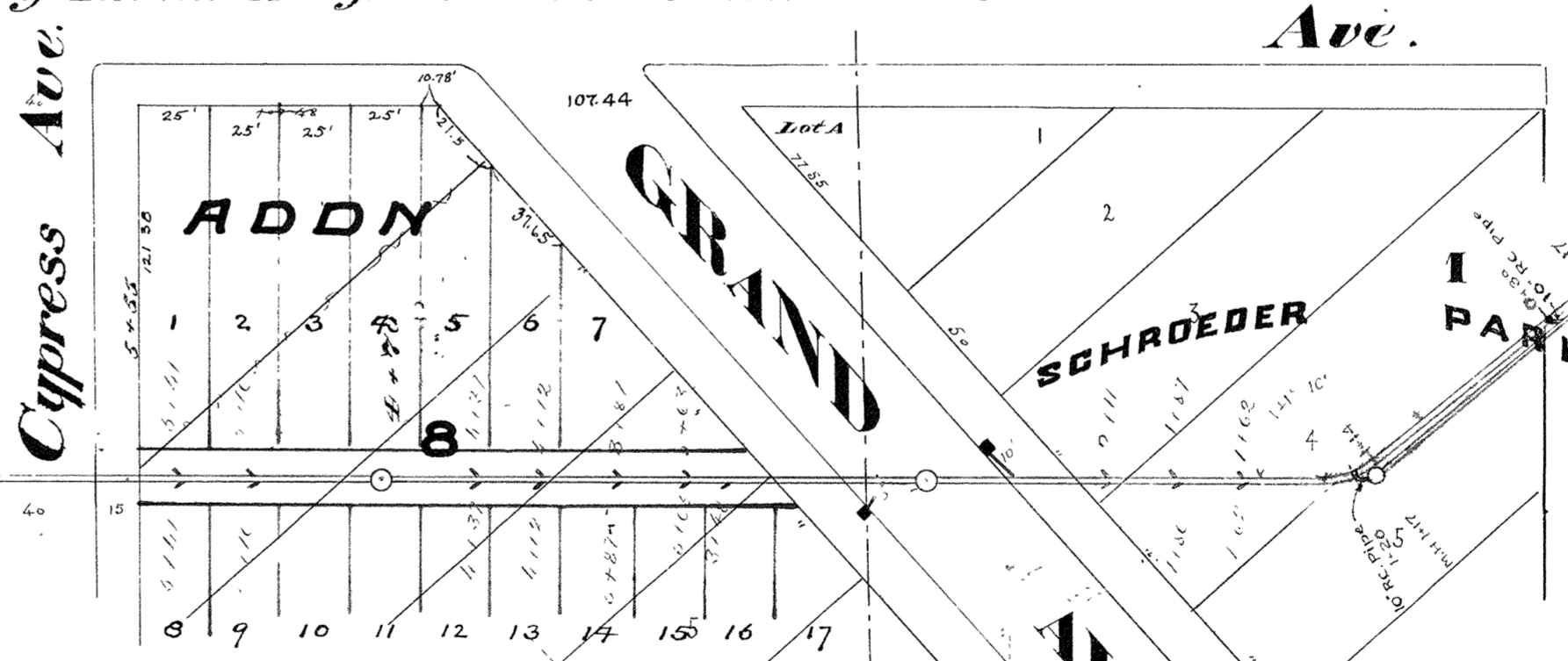


Plan & Profile of Sewer in Alley South of Ritchie Ave. from Cattin to Lamborn Ave.



Plan & Profile of Sewer in Alley South of Ritchie Ave. from the Outlet to Cattin Ave.



24" Vit. Pipe Sewer
see page 22B Book 3A.

STA. 0+17 TO STA. 1+14
48" R.C. Pipe laid April 1937.
W. B. A. Labor.
M. Skamser Inspector
L. W. Pestleske City Engineer

R.C. End Wall
See Drawing File No. 2-481

Scale: { Horizontal 60' = 1"
Vertical 8' = 1"

CITY OF SUPERIOR

SEWER PLAN

Contract let April 16, 1891
completed Sept 30, 1891

Birkland & Starkev, Contractor
J. H. Little & James Nelson, Inspectors
E. B. Banks, City Engineer

48" R.C. PIPE

Base line 20' above datum

3B-10