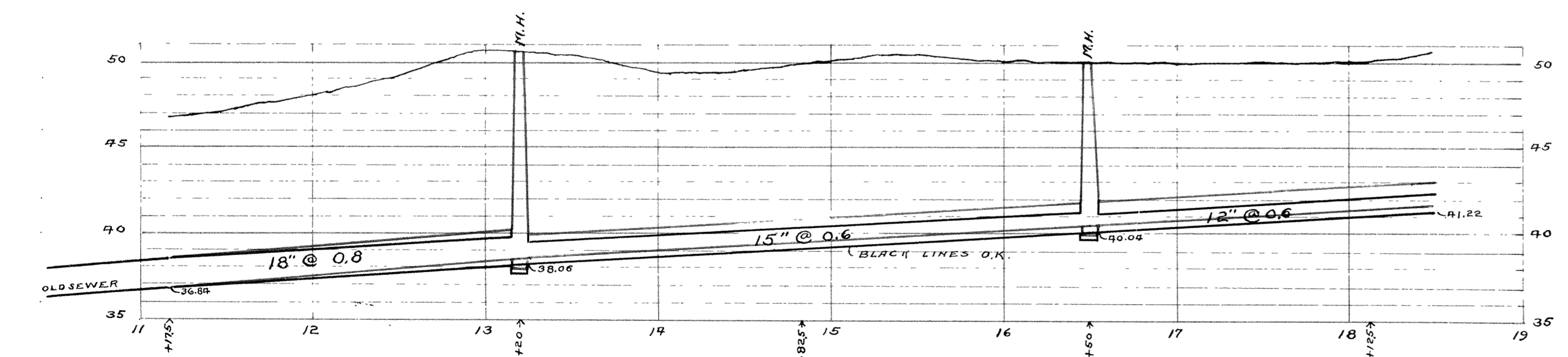
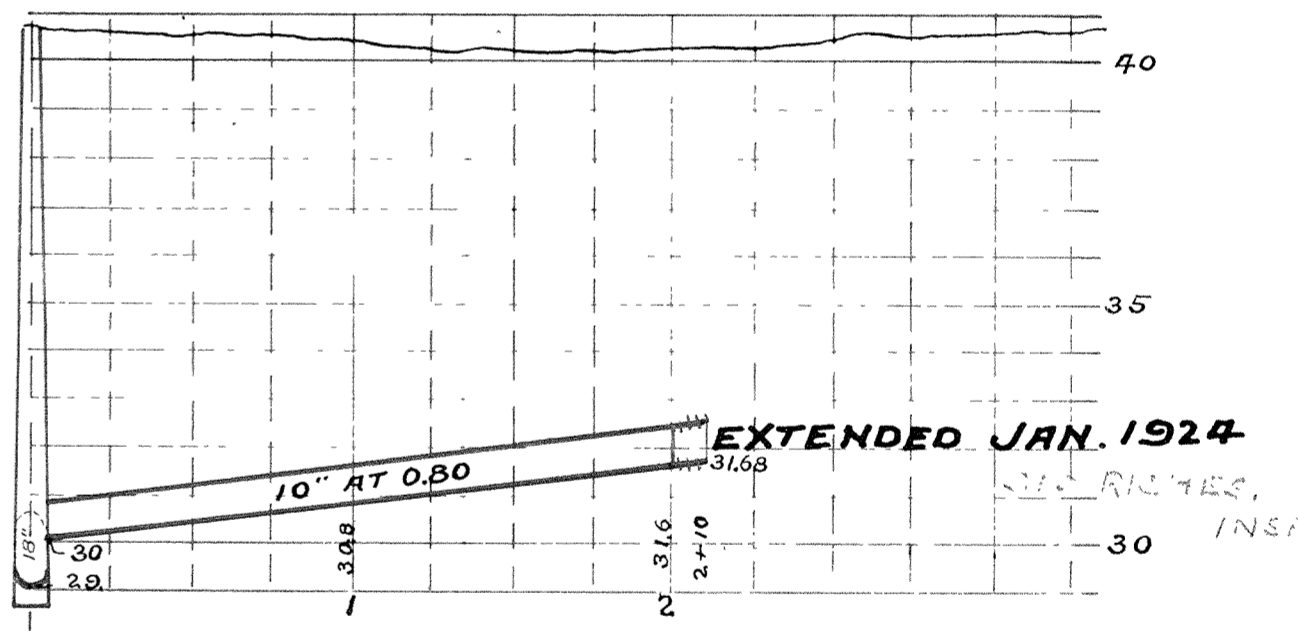
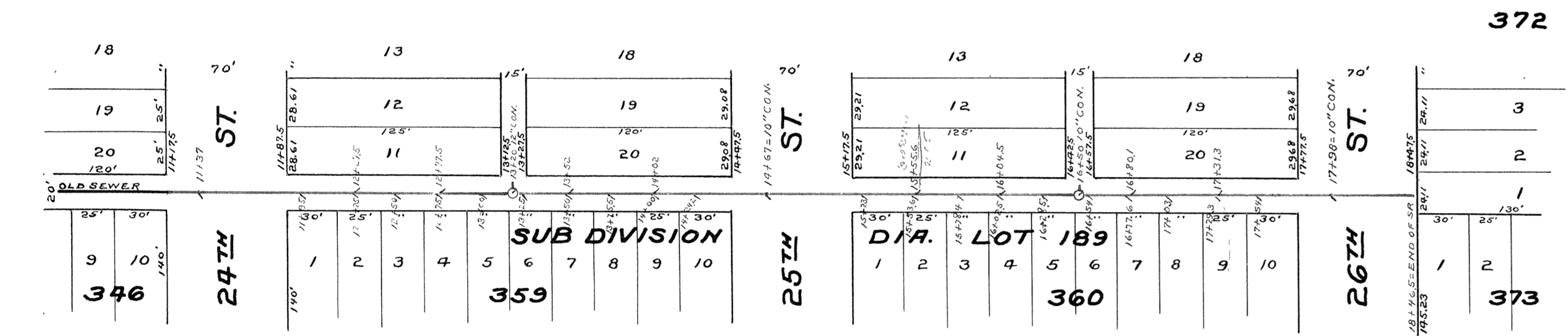
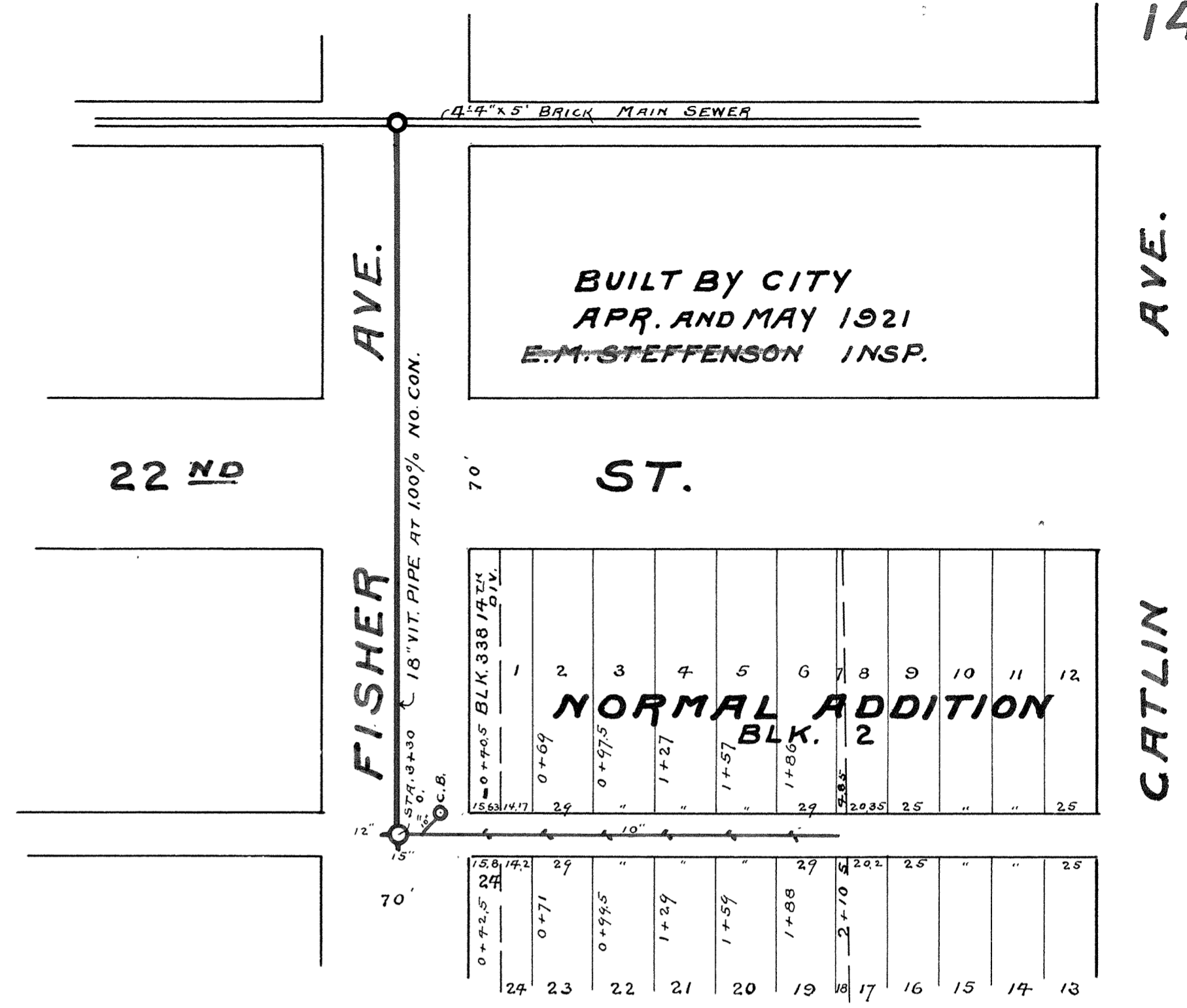
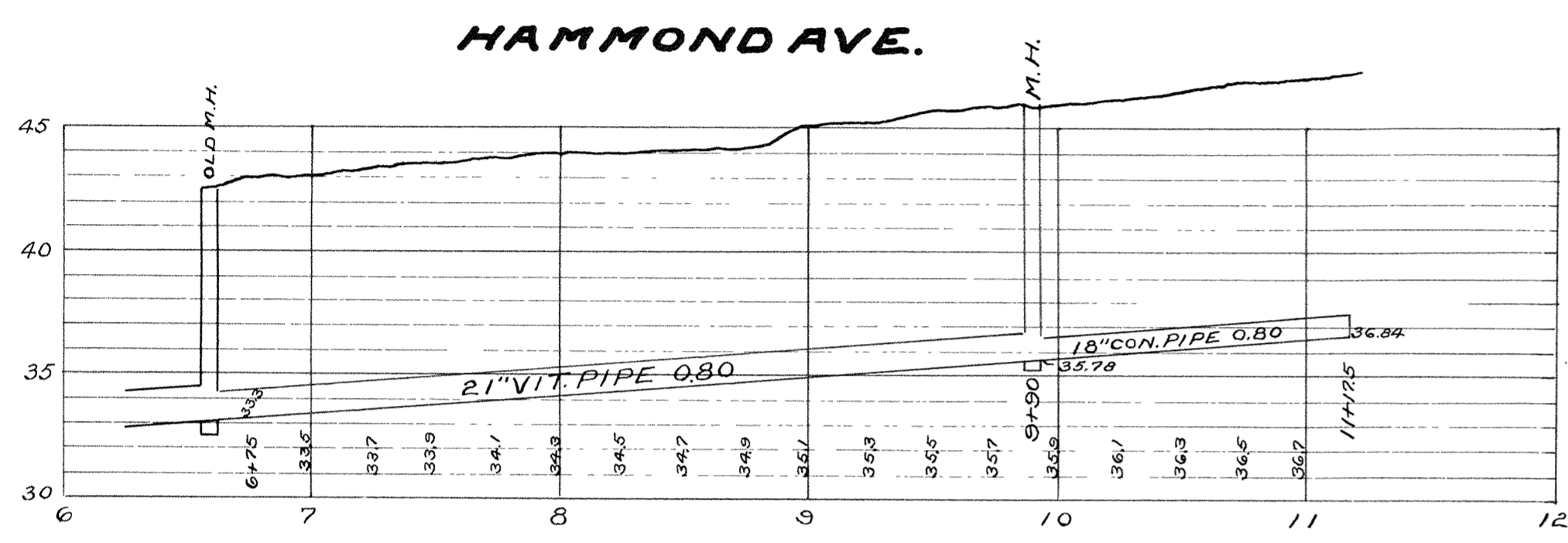


MAP AND PROFILE OF SEWER IN ALLEY EAST OF HAMMOND AVE. FROM ALLEY BET. FAXON STREET AND 23RD ST. TO 24TH ST. NICK ANDERSON INSP. MAGNUS PETERSON CONT. E.B.BANKS CITY ENGR. SEWER COMPLETED OCT. 1922. SCALE 1"=60 FT. CONTRACT N^o 1656



CONTRACT No. 1714
 MAP AND PROFILE OF SEWER IN ALLEY BETWEEN HAMM. AND CUMM. AVENUES FROM THE NORTH LINE OF 24TH ST. TO THE SOUTH LINE OF 26TH STREET
 BYRON KIMBALL INSPECTOR
 PETER BERGMAN CONTRACTOR
 E.B.BANKS CITY ENGR.
 SEWER COMPLETED AUGUST 1926

NOTE:- SEWER BUILT AS SHOWN IN BLACK

SCALE: HORIZONTAL 1"=60' VERTICAL 1"=6'

SEE 3B-14A FOR EXTENSION EAST OF CATLIN AVE.

3B-14

