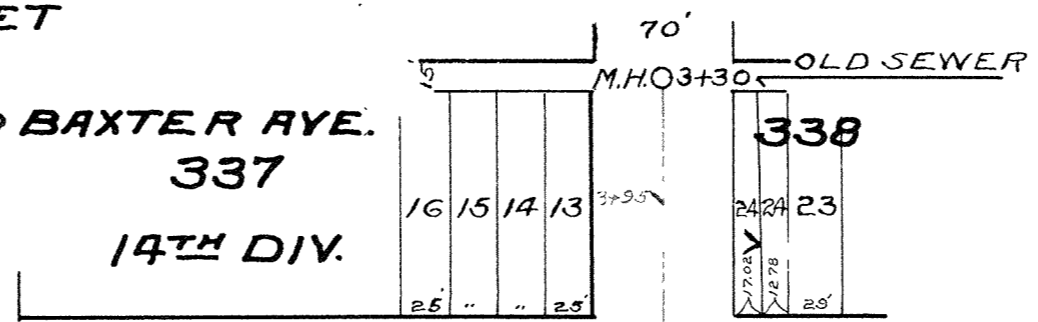
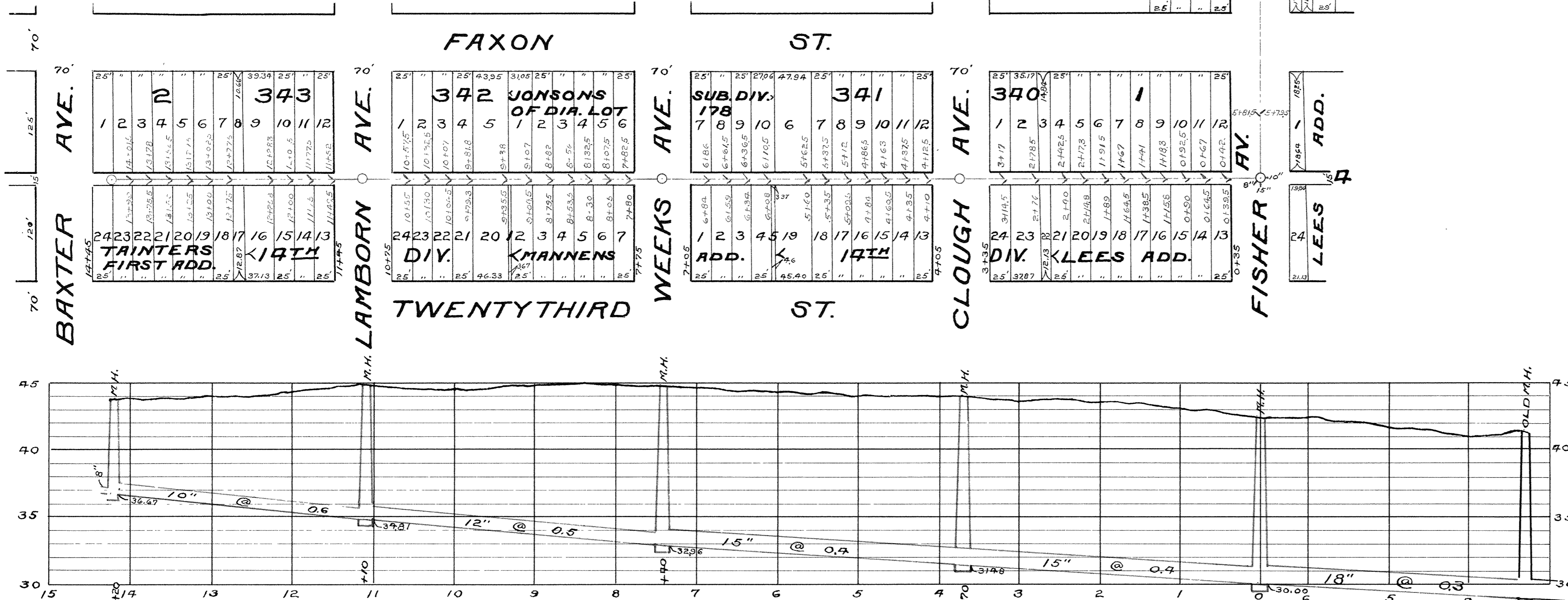
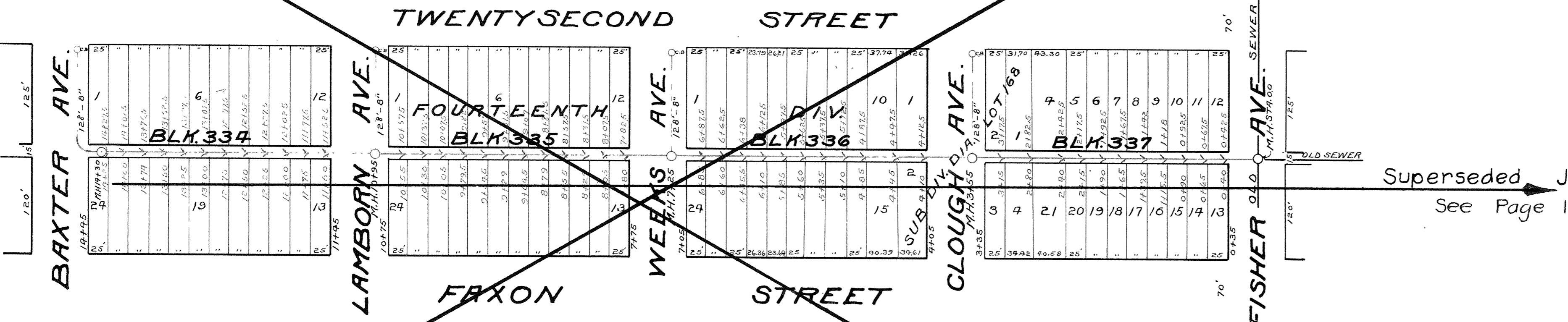


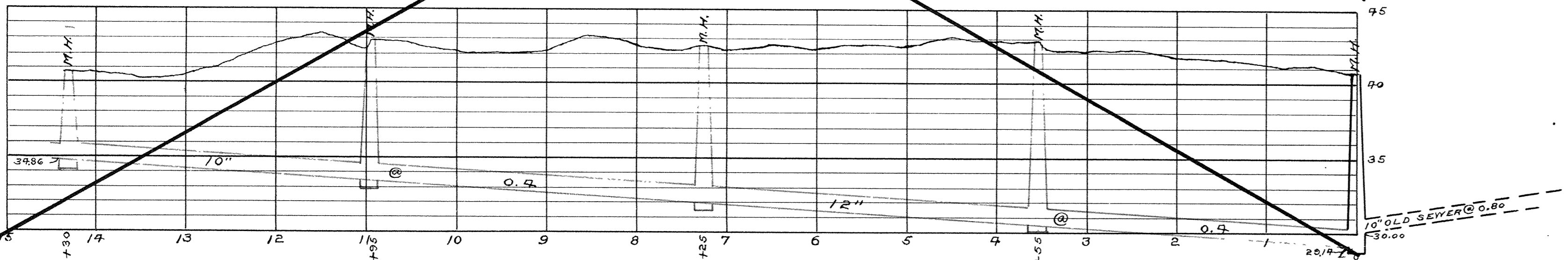
MAP AND PROFILE OF SEWER IN FISHER AVE. FROM THE ALLEY BETWEEN 22<sup>ND</sup> STREET AND FAXON STREET TO THE ALLEY BETWEEN FAXON STREET AND 23<sup>RD</sup> STREET AND IN THE ALLEY BETWEEN FAXON STREET AND 23<sup>RD</sup> ST. FROM FISHER AVE TO BAXTER AVE.  
 HORIZONTAL SCALE: 1"=100' BYRON KIMBALL INSPECTOR E. B. BANKS CITY ENGR.  
 VERTICAL SCALE: 1"=6' CONTRACT NO 1694 CONTRACT COMPLETED 8-18-1925



MAP AND PROFILE OF SEWER IN THE ALLEY BETWEEN TWENTYSECOND STREET AND FAXON STREET FROM FISHER AVENUE TO BAXTER AVE.  
 IN THE CITY OF SUPERIOR WISC.  
 HORIZONTAL SCALE:- 1"=100' VERTICAL SCALE:- 1"=6' E. B. BANKS CITY ENGR.  
 CONTRACT NO 1729 CONTRACT COMPLETED 10-5-1927 BYRON KIMBALL INSPR.



Superseded July 9, 1936  
 See Page 15 A



3B-15