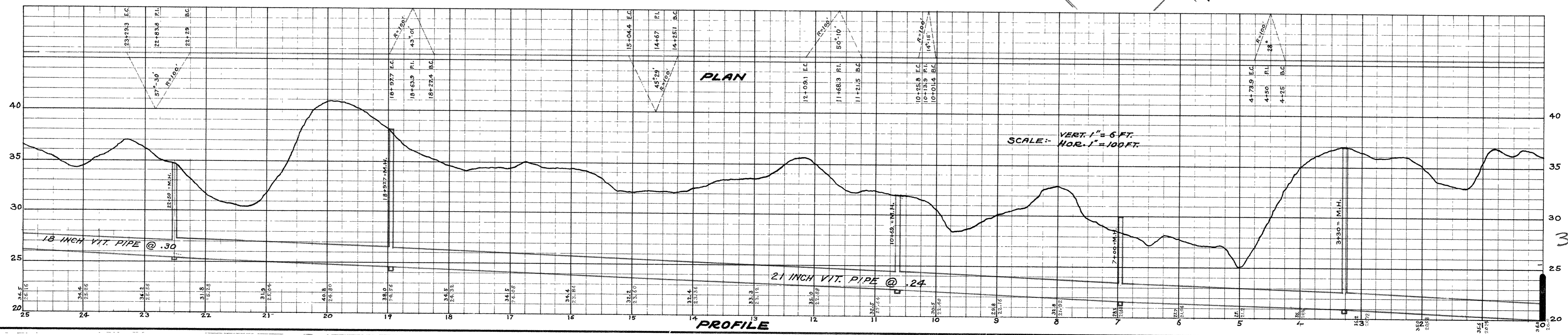
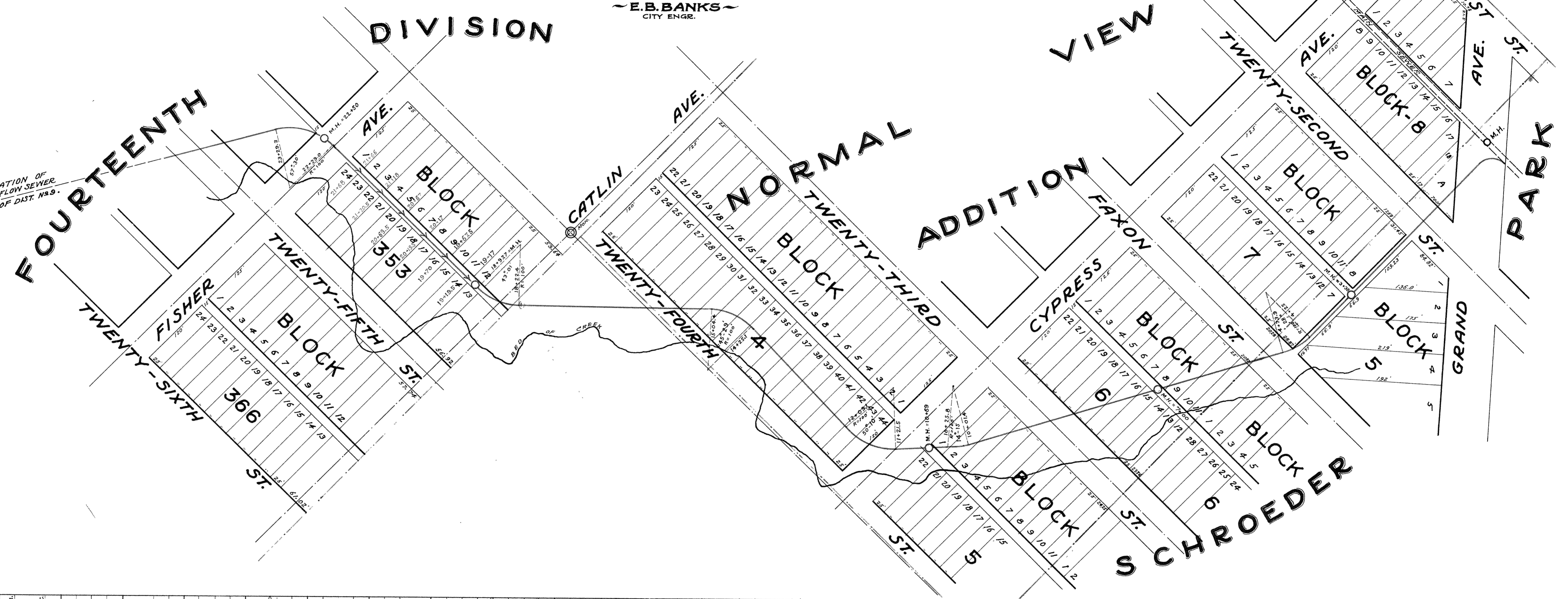


~MAP & PROFILE~
 SHOWING DRY WEATHER FLOW SEWER EXTENDING SOUTHWESTERLY
 FROM THE MAIN SEWER IN THE ALLEY
 SOUTH OF TWENTY-FIRST STREET TO A POINT
 342 FT. EAST OF THE CENTER OF CYPRESS AVENUE
 TO A RIGHT LINE EXTENSION OF THE CENTER LINE OF WEEKS
 AVE. AT A POINT 165 FT. SOUTH OF THE CENTER LINE OF N. 26TH ST.
 IN THE CITY OF SUPERIOR - WISCONSIN
 CONSTRUCTED BY CITY OF SUPERIOR - FEB. 9 TO APRIL 3, 1931
 SCALE: 1 INCH = 100 FEET
 ~E.B. BANKS~
 CITY ENGR.

FOR CONTINUATION OF
 DRY-WEATHER FLOW SEWER
 SEE PAGE 3 OF DIST. N^{OS}.



3B-16