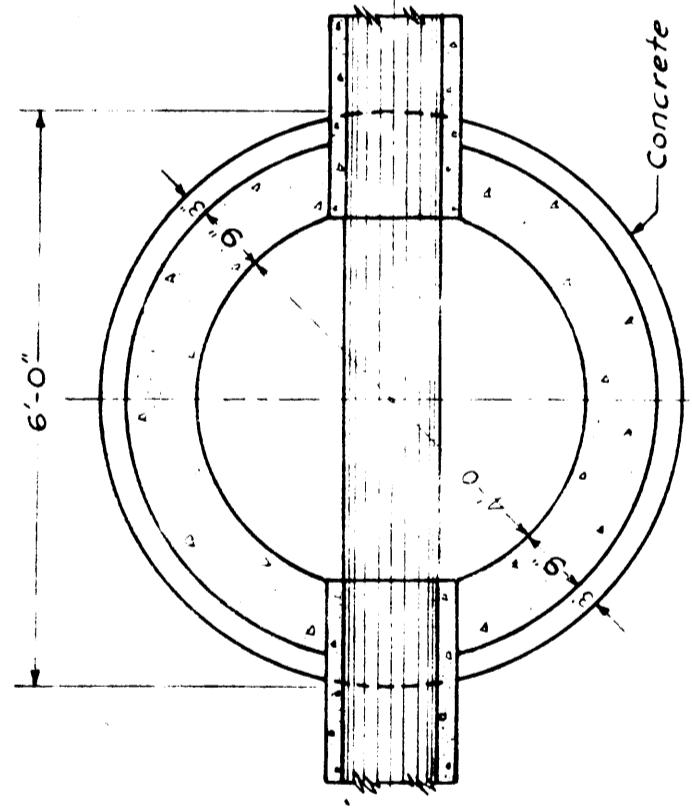
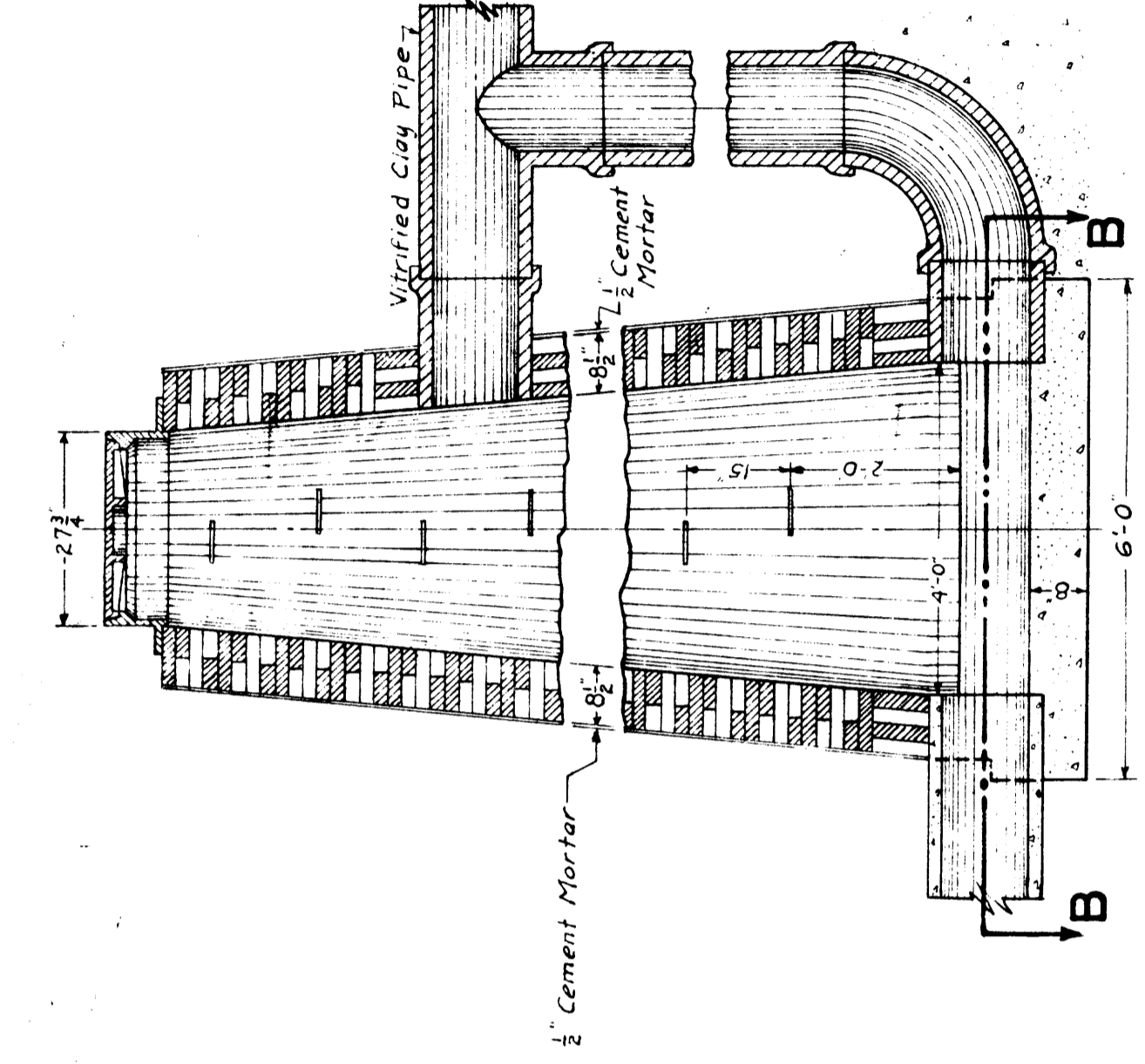


SECTION A-A

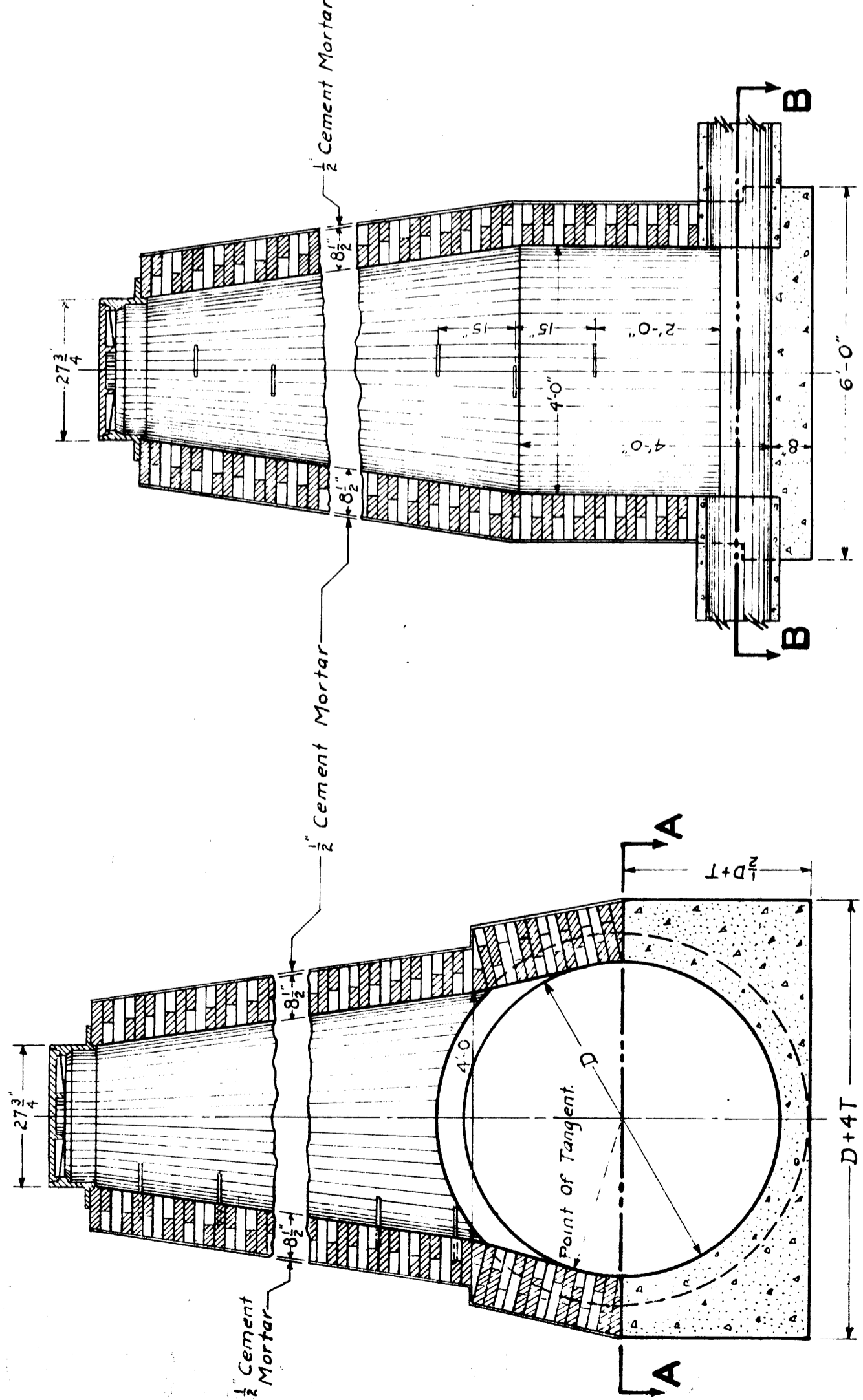


SECTION B-B

Typical Section For Standard And Drop Manholes.



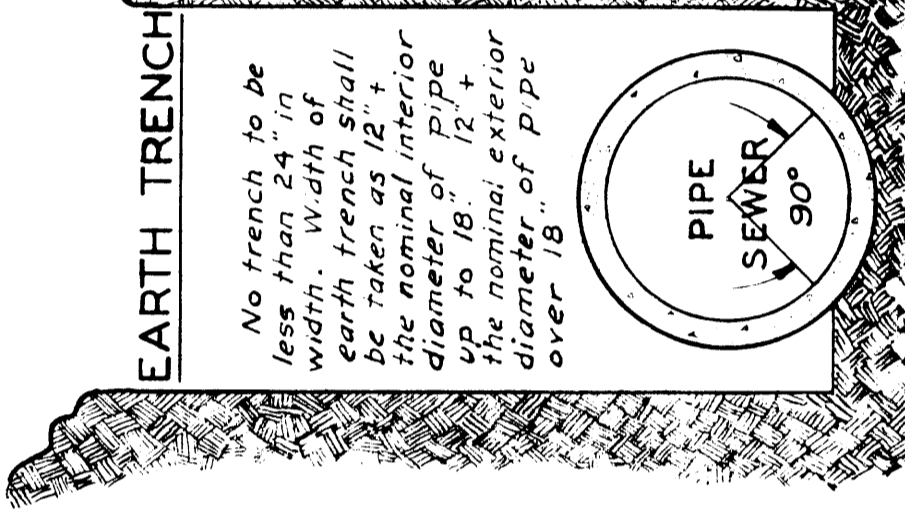
DROP MANHOLE



OVERSIZE MANHOLE

For Sewers More Than Four Feet In Diameter.

D = Inside Dia. of Pipe
T = Thickness of Pipe Wall



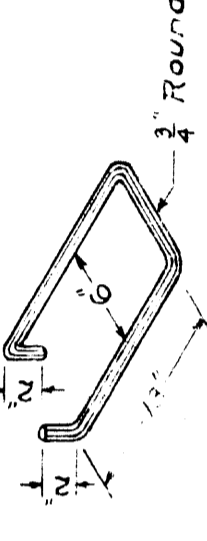
SECTIONS OF EARTH AND ROCK TRENCHES FOR PIPE SEWERS

No trench to be less than 24" in width. Width of earth trench shall be taken as 12" + the nominal interior diameter of pipe + the nominal exterior diameter of pipe over 18".

Quantities allowed will be estimated from these sections. The calculated trench will extend upward to the natural sub-grade or line of slopes in cutting.

All work shall conform to the Rules and Regulations of the Wisconsin Industrial Commission.

BOTTOM QUADRANT OF PIPE IN CONTACT WITH UNDISTURBED TRENCH BOTTOM



MANHOLE STEP

NOTES.

Standard manhole frames and covers are to be used Sec. Eng. 2-464. Sewer pipes to be either vitrified clay or reinforced concrete.

SPECIFICATION.

Manholes shall be constructed of brick and plastered on the outside with cement mortar as shown. Excavate to concrete base to exact grade and the wall will be permitted to be built on a 1:1 slope of cement 1/2 parts sand and 3 parts gravel (1 1/2:3). Reinforcing shall be in accordance with the connecting sewer size or by reference to drawing Standard Design of Reinforcing and Reinforcing shall conform to the standard specification for concrete sewer pipe construction, Section 815 of the Wisconsin State Highway Specifications. Coarse aggregate shall be size 1.

STANDARD MANHOLE

For Sewers Four Feet Or Less In Diameter.

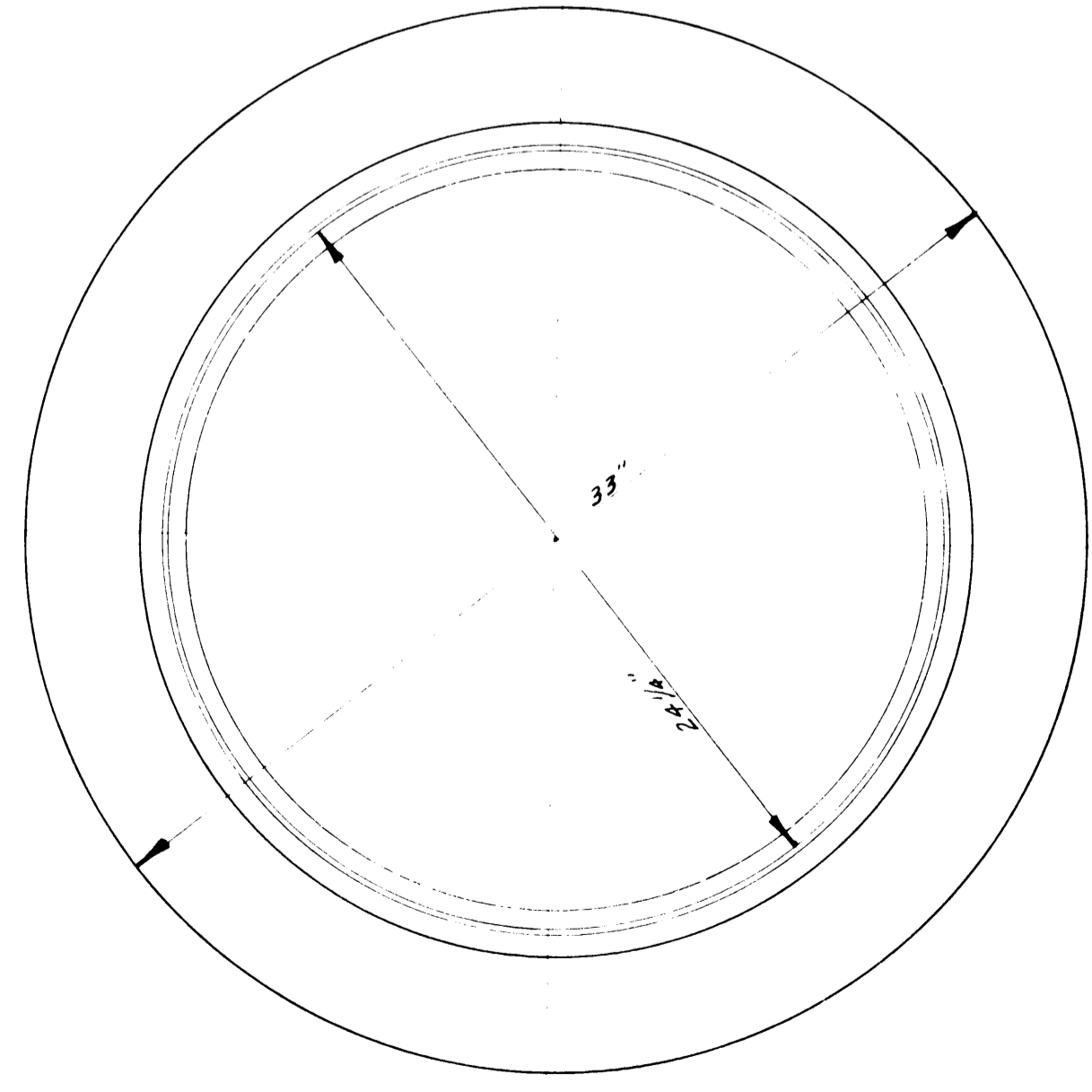
D = Inside Dia. of Pipe
T = Thickness of Pipe Wall

CITY OF SUPERIOR
ENGINEERING DEPARTMENT
**STANDARD
MANHOLES & TRENCHES
FOR PIPE SEWERS**
L. W. PELESKE CITY ENGINEER
SCALE - 1/2 IN. = 1 FT. FEB. 29, 1936
DRN. BY NILL DES. L.W.P. APP. W. Peleske

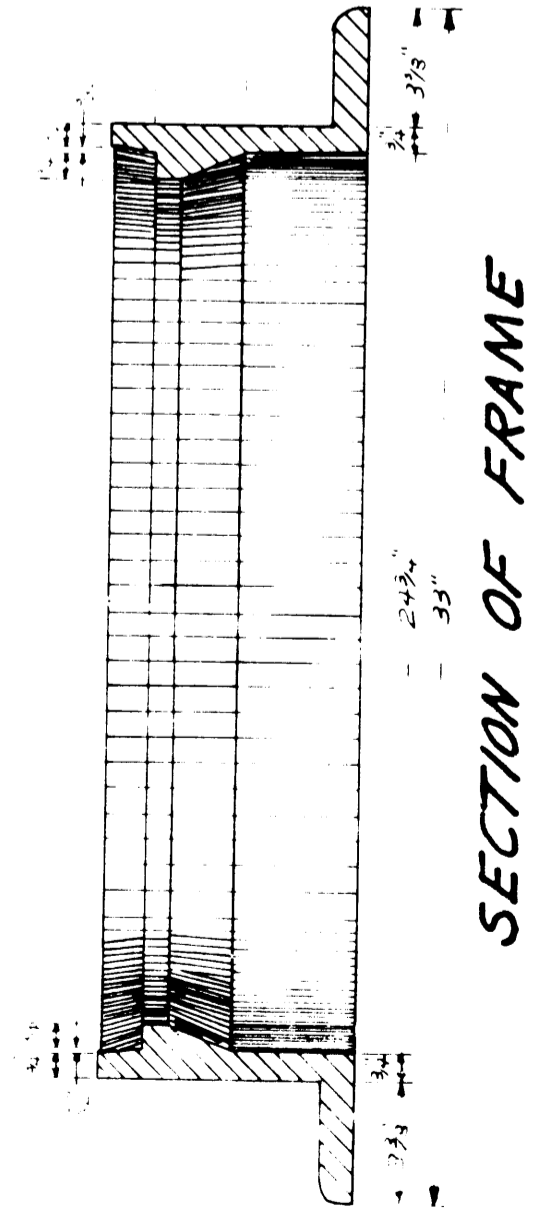
13-630

Sheet # 4

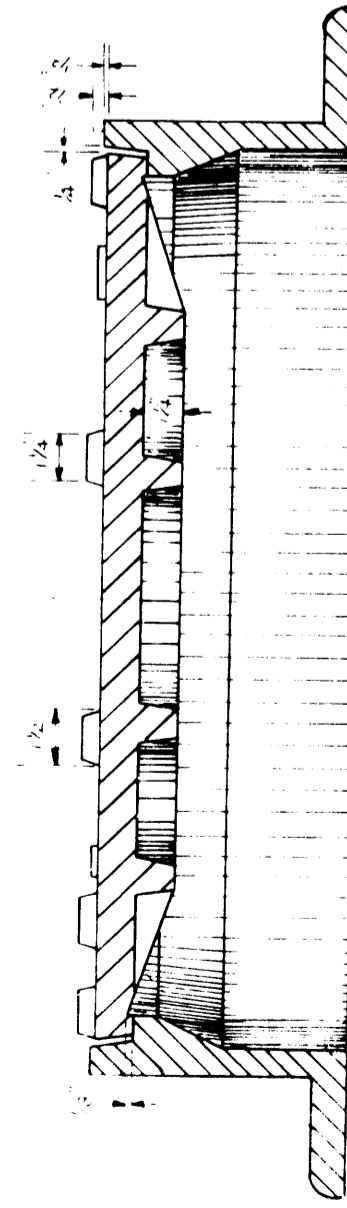
2-595



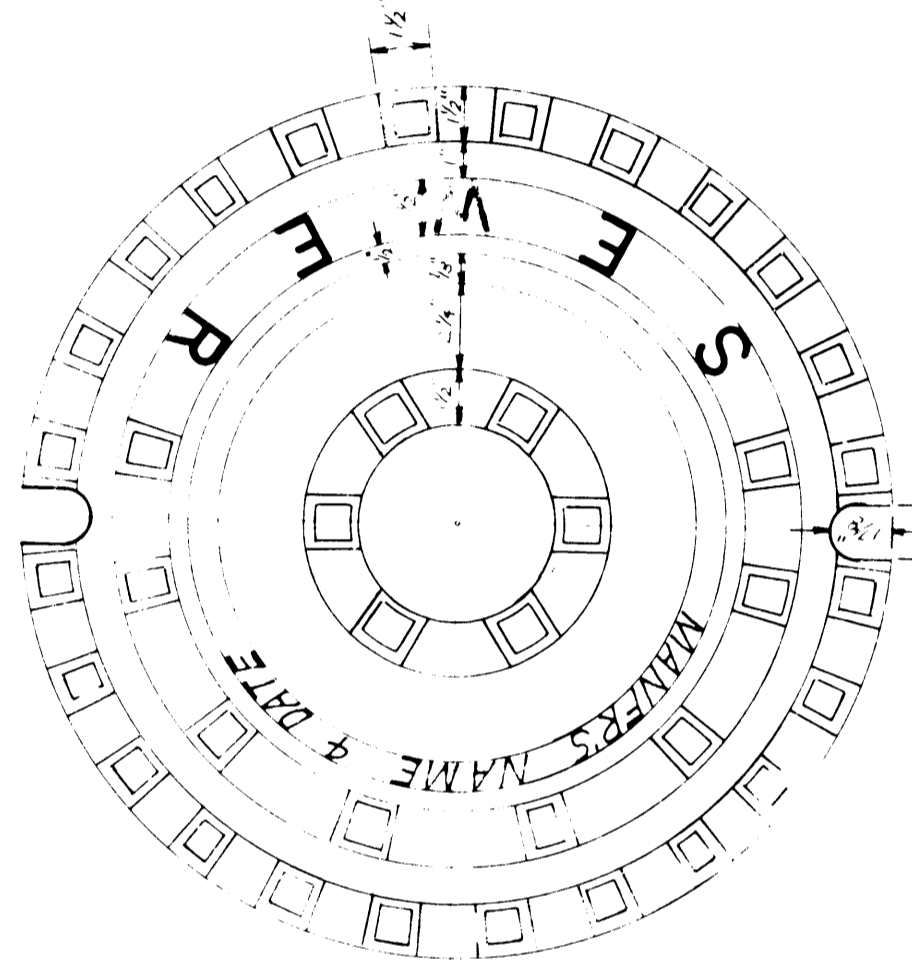
PLAN OF FRAME



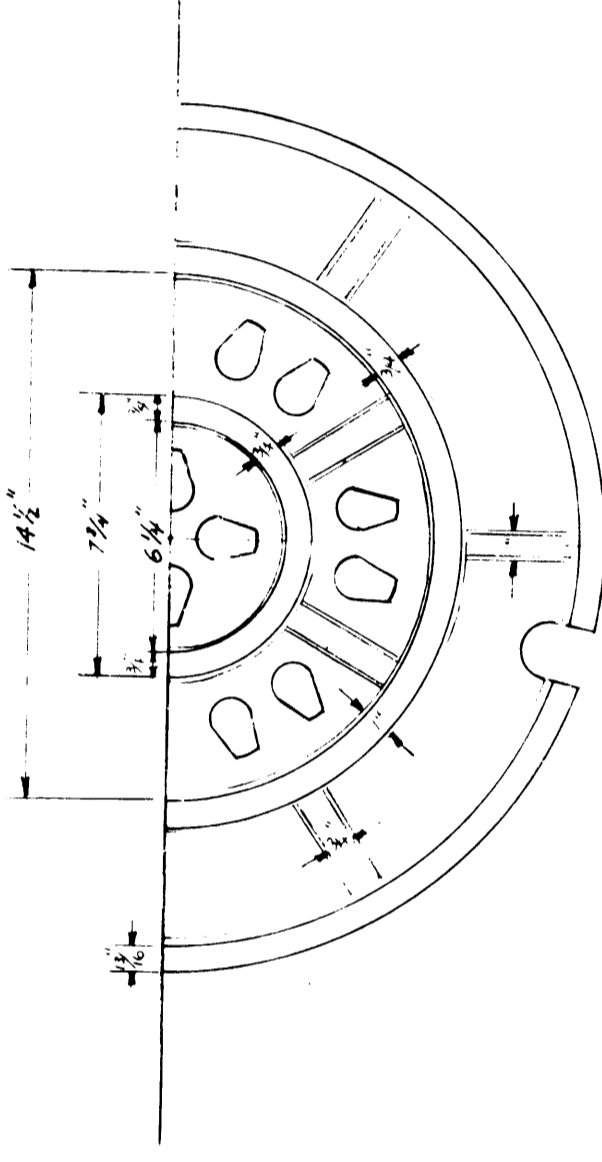
SECTION OF FRAME



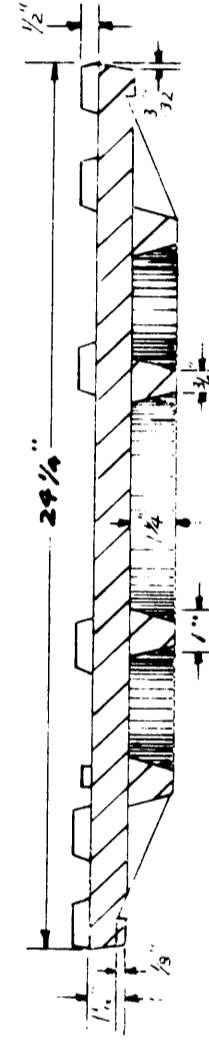
SECTION OF ASSEMBLY



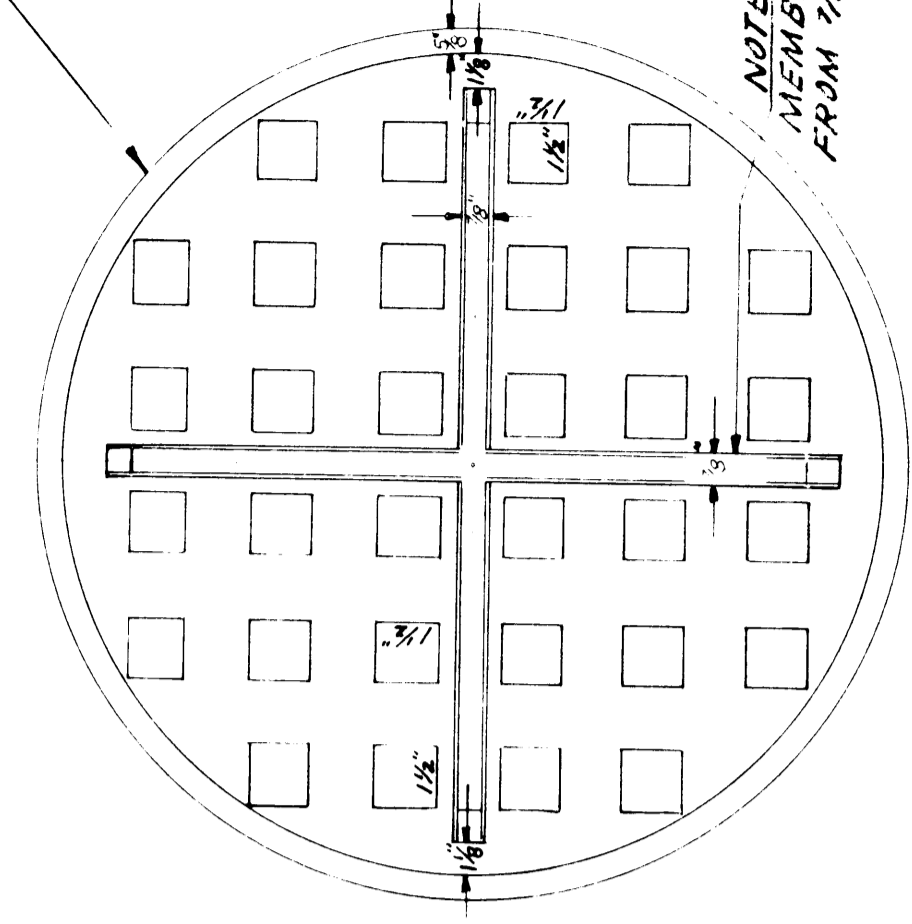
PLAN OF STANDARD COVER TOP VIEW



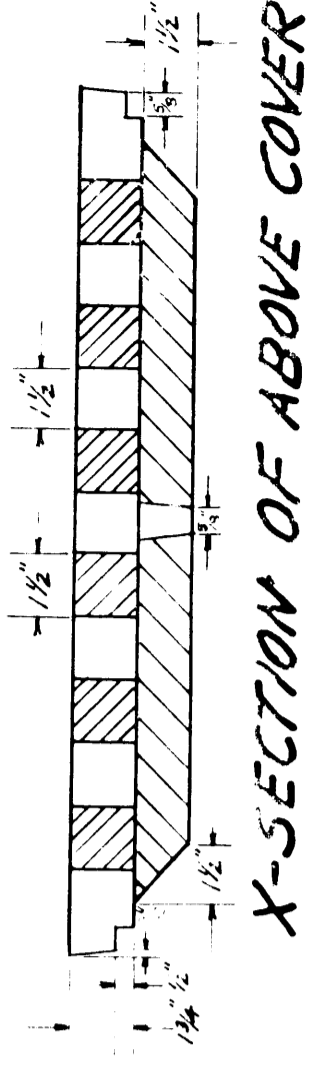
HALF PLAN OF COVER BOTTOM VIEW



X-SECTION OF ABOVE COVER



PLAN OF SURFACE DRAIN COVER BOTTOM VIEW



X-SECTION OF ABOVE COVER

NOTE: TOP VIEW OF COVER SAME AS BELOW MANHOLE MEMBERS

NOTE: MANHOLE MEMBERS TAPER FROM 7/8" TO 5/8"

SPECIFICATIONS

ALL CASTINGS SHALL BE OF THE BEST QUALITY AND SHALL BE MADE TO THE DESIGN AND DIMENSIONS SHOWN ON THIS DRAWING AND SHALL BE SUBJECT TO THE INSPECTION AND APPROVAL OF THE ENGINEER. THE MANUFACTURER SHALL BE RESPONSIBLE FOR THE QUALITY OF THE CASTINGS AND SHALL BE REQUIRED TO FURNISH PROOF OF THE QUALITY OF THE CASTINGS TO THE ENGINEER. THE ENGINEER SHALL BE RESPONSIBLE FOR THE QUALITY OF THE CASTINGS AND SHALL BE REQUIRED TO FURNISH PROOF OF THE QUALITY OF THE CASTINGS TO THE ENGINEER.

CITY OF SUPERIOR
ENGINEERING DEPARTMENT
**PLAN OF MANHOLE FRAME
AND COVERS**

DES. L.W.P.

SCALE 1/2" = 1'

DATE

FILED

APR 11 1936

L.M.P.

CITY ENGINEER

3-928