

GENERAL NOTES

1. ALL EXPOSED SURFACES OF CABINETS FINISHED TO MATCH FACE.
2. BASE KICK REQUIRED AT ALL BUILT-INS.
3. WALL CABINET SET TO SOLID BLOCKING.
4. 1 1/2" THICK P-LAM COUNTER TOP, 3/4" X 4" BACKSPLASH, SQUARE EDGE TOP.
5. PROVIDE FILLER STRIPS (TO MATCH ADJACENT CABINETS) AS REQUIRED BY CONDITIONS AND FABRICATOR, MAX FILLER WIDTH 3". PROVIDE FILLER STRIPS ADJACENT TO ALL BASE AND DRAWER BASE ELIMINATE CONFLICT BETWEEN CABINET FACE, DOORS AND WALLS. ADD FILLER STRIPS AROUND CAGE BANKS ON CURBS AFTER INSTALLATION OF CAGES.
6. TEMPERED GLASS TO BE USED IN ALL LOCATIONS.
7. PROVIDE 3" DIA. PLASTIC GROMMETS IN COUNTERTOP AT ALL COMPUTER LOCATIONS WITH KNEE SPACES.
8. PROVIDE RADIUS EDGE ON ALL OUTSIDE CORNERS ON ALL COUNTERTOPS, TYPICAL.
9. RE: SHEET A?? FOR EQUIPMENT SCHEDULE/INFO

CABINET DESIGNATION KEY

34-1/2" CABINETS (36" COUNTER TOP)

└ CABINET WIDTH

B___ BASE CABINET W/1 DRAWER AND 1 SHELF
 3BD___ BASE CABINET W/3 DRAWERS
 SB___ SINK BASE
 4BD___ BASE CABINET W/4 DRAWERS

BASE CABINET 24" DEEP U.N.O.

28-1/2" CABINETS (30" COUNTER TOP)

└ CABINET WIDTH

DB___ DESK HEIGHT BASE CABINET W/1 DRAWER AND 1 SHELF
 DD___ SHELF
 FD___ DESK HEIGHT BASE CABINET W/3 DRAWERS
 FD___ FILE DRAWER BASE CABINET

BASE CABINET 21" DEEP U.N.O.

38-1/2" CABINETS (40" COUNTER TOP)

└ CABINET WIDTH

HB___ STANDING HEIGHT BASE CABINET W/1 DRAWER AND 1 SHELF
 SHB___ SHELF
 HBD3___ STANDING HEIGHT SINK BASE
 HBD4___ STANDING HEIGHT BASE W/3 DRAWERS
 HBD4___ STANDING HEIGHT BASE W/4 DRAWERS

BASE CABINET 24" DEEP U.N.O.

32-1/2" CABINETS (34" COUNTER TOP)

└ CABINET WIDTH

UAB___ HANDICAP ACCESSIBLE BASE CABINET
 SUAB___ HANDICAP ACCESSIBLE SINK BASE
 UABD3___ HANDICAP ACCESSIBLE BASE W/3 DRAWERS
 UABD4___ HANDICAP ACCESSIBLE BASE W/4 DRAWERS

BASE CABINET 24" DEEP U.N.O.

WALL UNIT

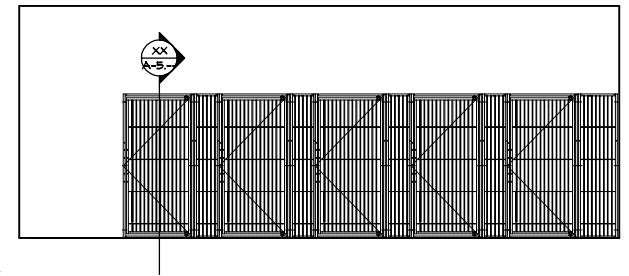
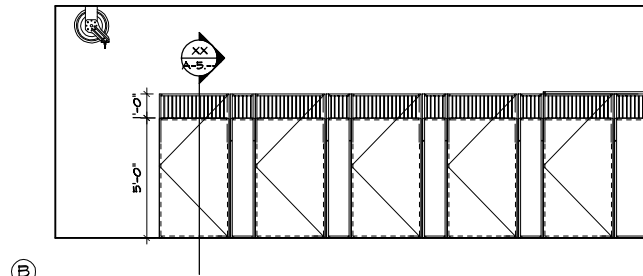
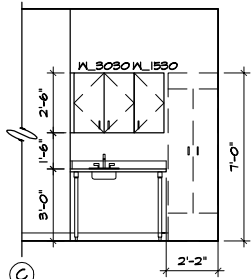
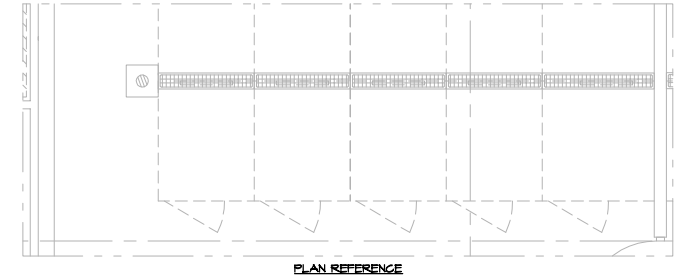
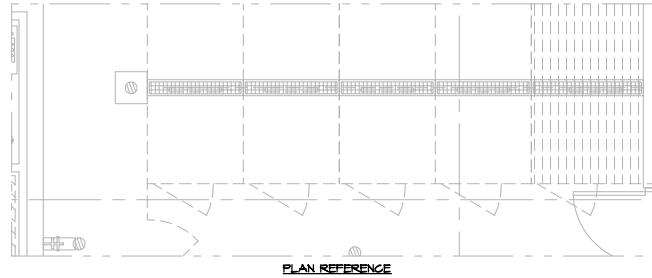
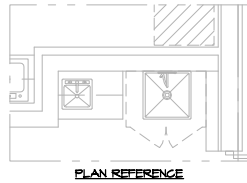
WIDTH └ HEIGHT

W___ WALL UNIT
 WO___ WALL UNIT W/OPEN SHELVING
 WG___ GLASS FRONTED WALL UNITS

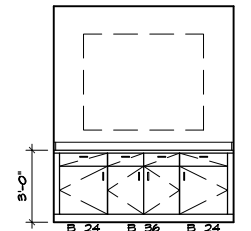
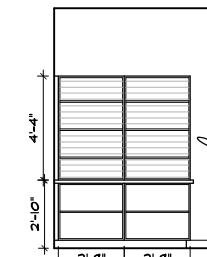
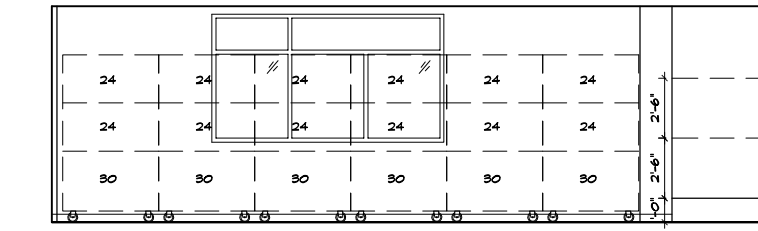
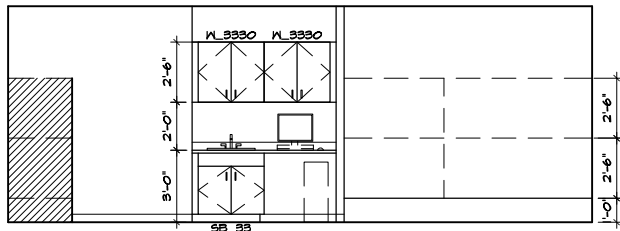
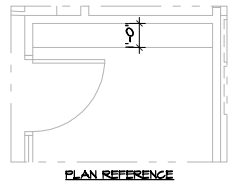
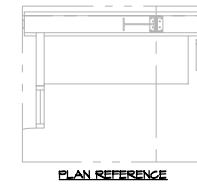
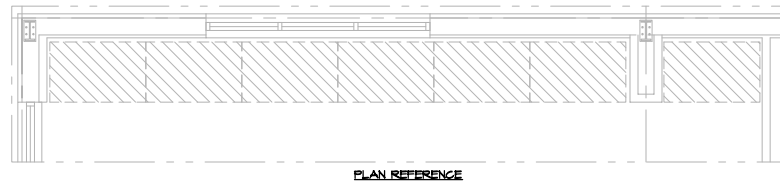
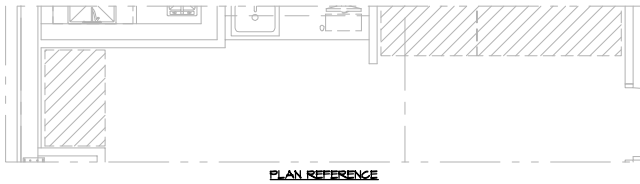
ALL WALL UNITS NOM. 12" DEEP U.N.O.

KEY NOTES

SYMBOL	DESCRIPTION
(XXX)	SEE EQUIPMENT SCHEDULE SHEETS
①	4'-0" F.R.P. WAINSCOTT WALL PROTECTION; RE: FINISH SCHEDULE
②	4" BACKSPLASH; 1-1/2" THICK P.LAM FACED TOP
③	FINISHED END / SIDE PANEL



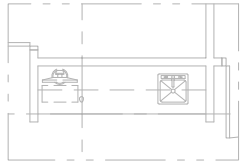
4 DOG ADOPT. - 114
SCALE: 1/8" = 1'-0"



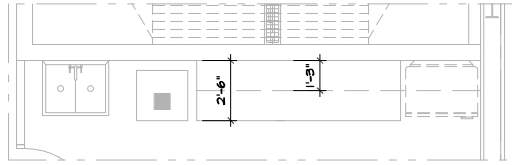
3 CAT ADOPT. - 104
SCALE: 1/8" = 1'-0"

2 WAIT. - 102
SCALE: 1/8" = 1'-0"

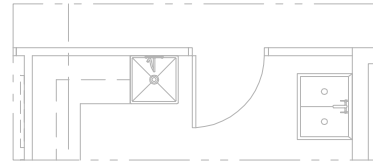
1 VEST. - 101
SCALE: 1/8" = 1'-0"



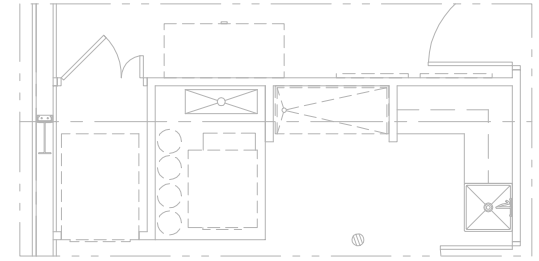
PLAN REFERENCE



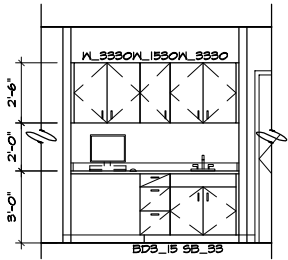
PLAN REFERENCE



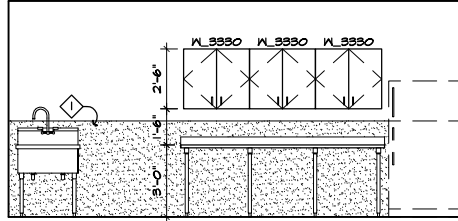
PLAN REFERENCE



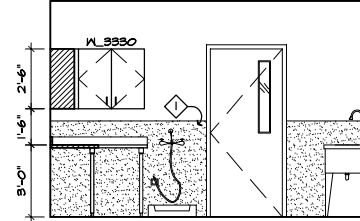
PLAN REFERENCE



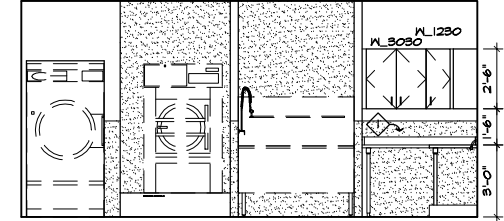
8 CHECK-IN - 122
SCALE: 1/8" = 1'-0"



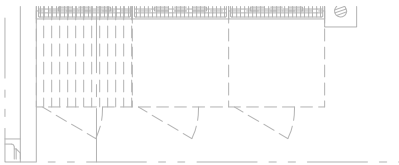
7 UTILITY - 119
SCALE: 1/8" = 1'-0"



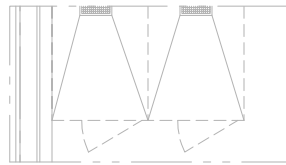
B



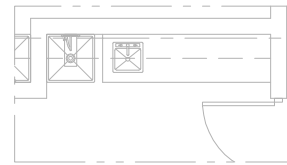
A



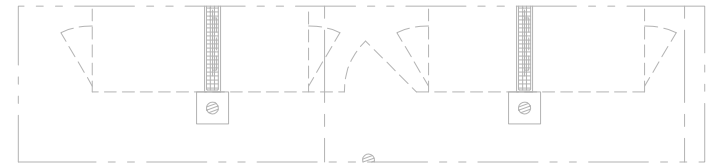
PLAN REFERENCE



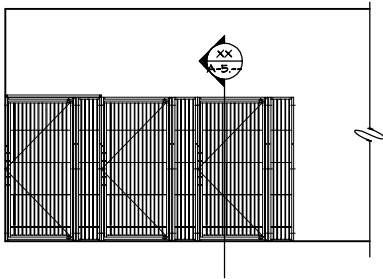
PLAN REFERENCE



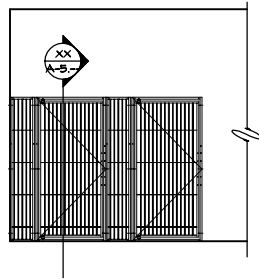
PLAN REFERENCE



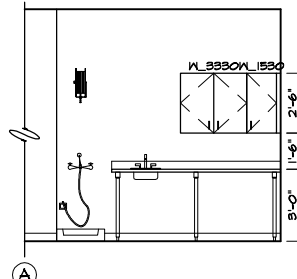
PLAN REFERENCE



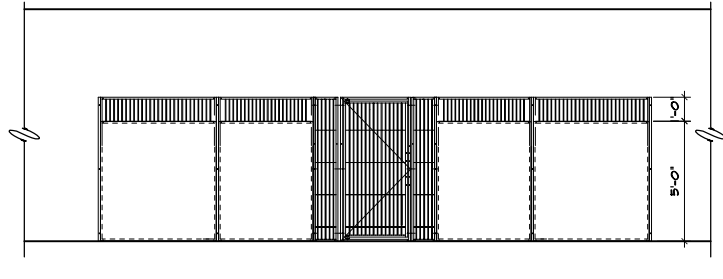
6 DOG QUAR. - 118
SCALE: 1/8" = 1'-0"



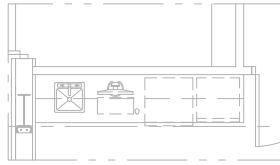
5 DOG ISO. - 117
SCALE: 1/8" = 1'-0"



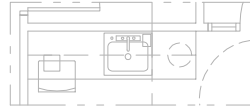
A



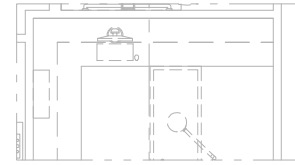
4 DOG ADOPT. - 114
SCALE: 1/8" = 1'-0"



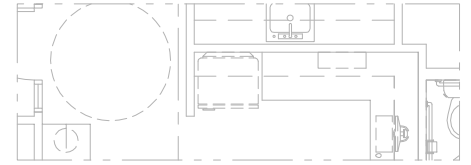
PLAN REFERENCE



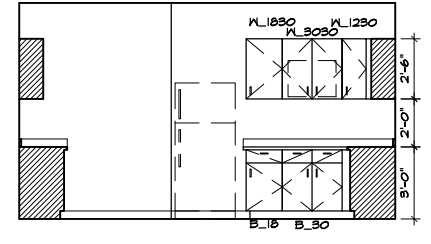
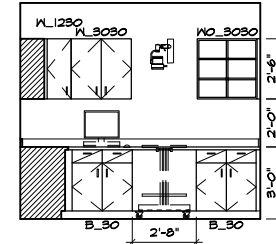
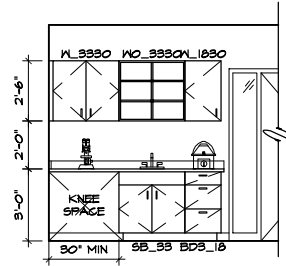
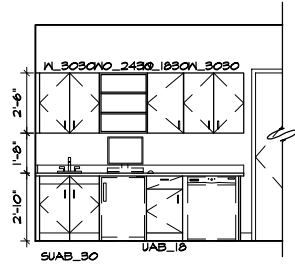
PLAN REFERENCE



PLAN REFERENCE

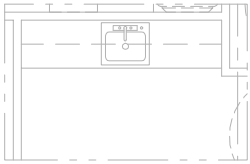


PLAN REFERENCE

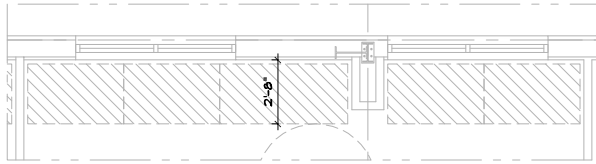


13 COMMUNITY RM. - 133
SCALE: 1/8" = 1'-0"

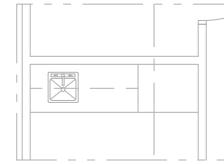
12 MED ROOM - 129
SCALE: 1/8" = 1'-0"



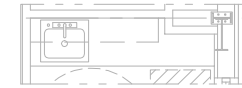
PLAN REFERENCE



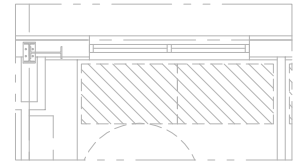
PLAN REFERENCE



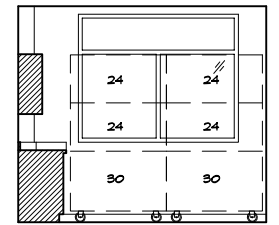
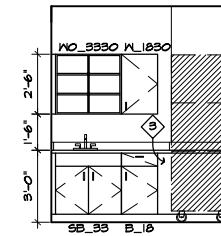
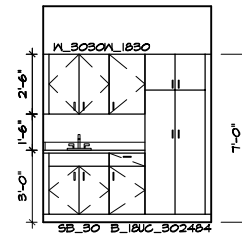
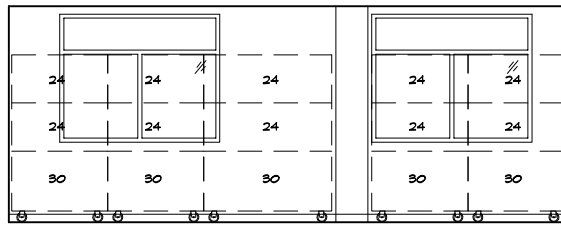
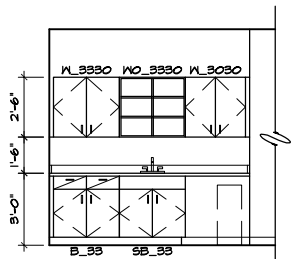
PLAN REFERENCE



PLAN REFERENCE



PLAN REFERENCE



11 CAT HOLD - 128
SCALE: 1/8" = 1'-0"

10 BEHAVIOR - 126
SCALE: 1/8" = 1'-0"

9 CAT ISO - 125
SCALE: 1/8" = 1'-0"