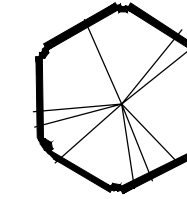


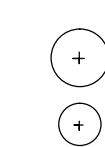
LEGEND

DECIDUOUS TREE (18)



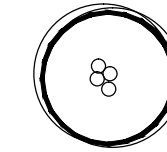
NORTHWOODS RED MAPLE
SIENNA GLEN MAPLE
HACKBERRY
DISCOVERY ELM

DECIDUOUS SHRUB (69)



DWARF BUSH HONEYSUCKLE
ALPINE SPIREA
PRAIRIE PETITE LILAC
CRANBERRY COTONEASTER
RHODODENDRON SPECIES
DAKOTA GOLDCHARM SPIREA

ORNAMENTAL TREE (1)



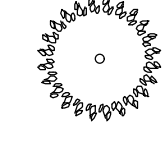
LITTLE KING BIRCH
IVORY SILK LILAC

EVERGREEN SHRUB (64)



DWARF NORWAY SPRUCE
VALLEY CUSHION MUCHO PINE
ELEGANS SPRUCE

EVERGREEN TREE (18)

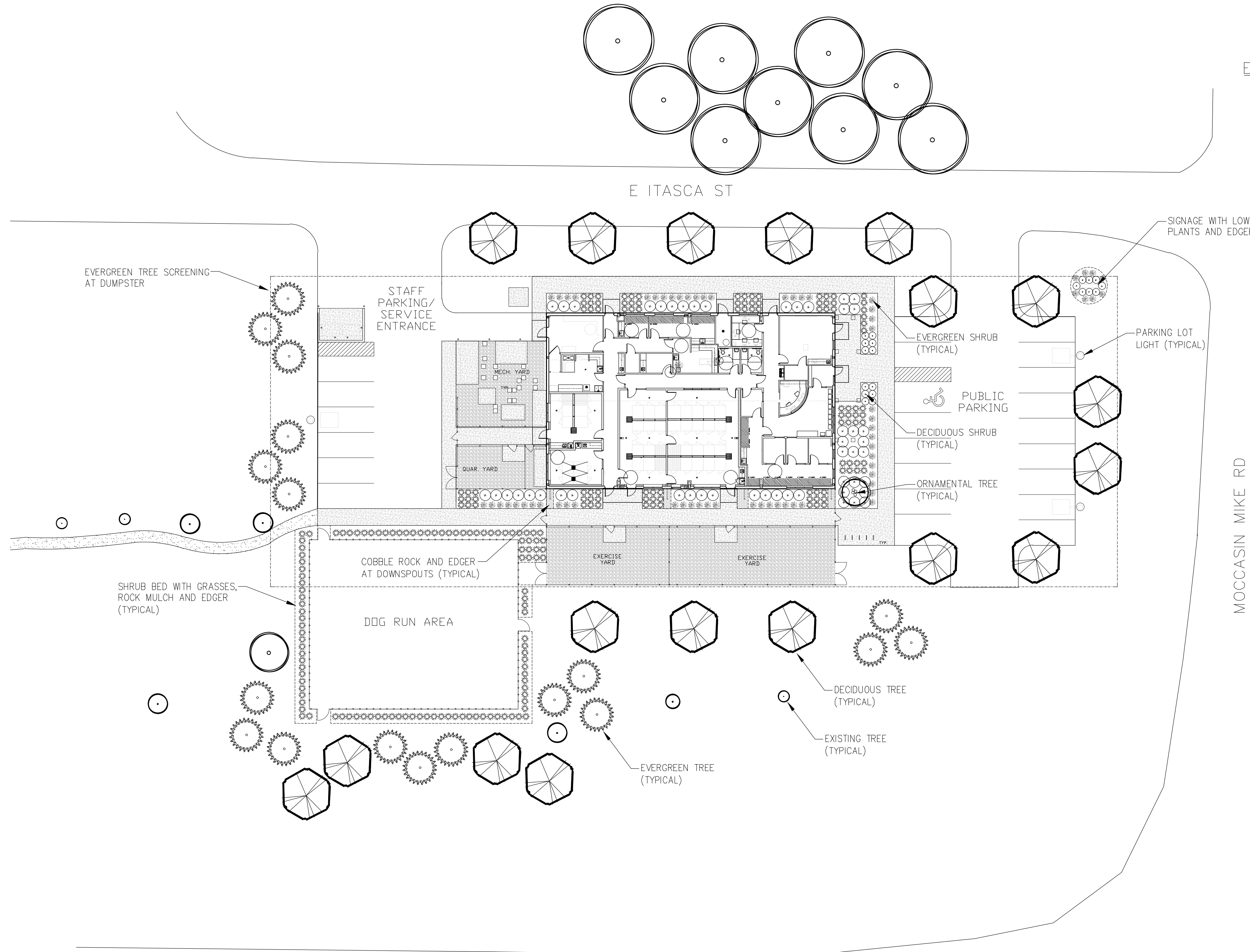


COLORADO BLUE SPRUCE
RED PINE
WHITE PINE
BLACK HILLS SPRUCE

ORNAMENTAL GRASSES (219)



KARL FOERSTER GRASS
PRAIRIE DROPS EED GRASS



ASSOCIATES

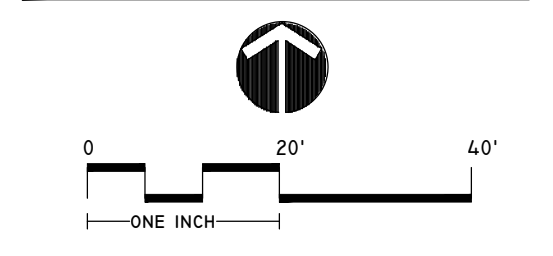
WWW.SASLANDARCH.COM
219 WEST FIRST STREET, SUITE 350
DULUTH, MN 55802
(P) 218.391.1335
(F) 218.722.6697

COPYRIGHT 2015 ALL DRAWN AND WRITTEN INFORMATION APPEARING HEREIN SHALL NOT BE DUPLICATED, DISCLOSED OR OTHERWISE USED WITHOUT WRITTEN CONSENT OF SAS+ASSOCIATES.

ISSUE RECORD/REVISION

PURPOSE	DATE

SUPERIOR ANIMAL SHELTER
CITY OF SUPERIOR, WISCONSIN

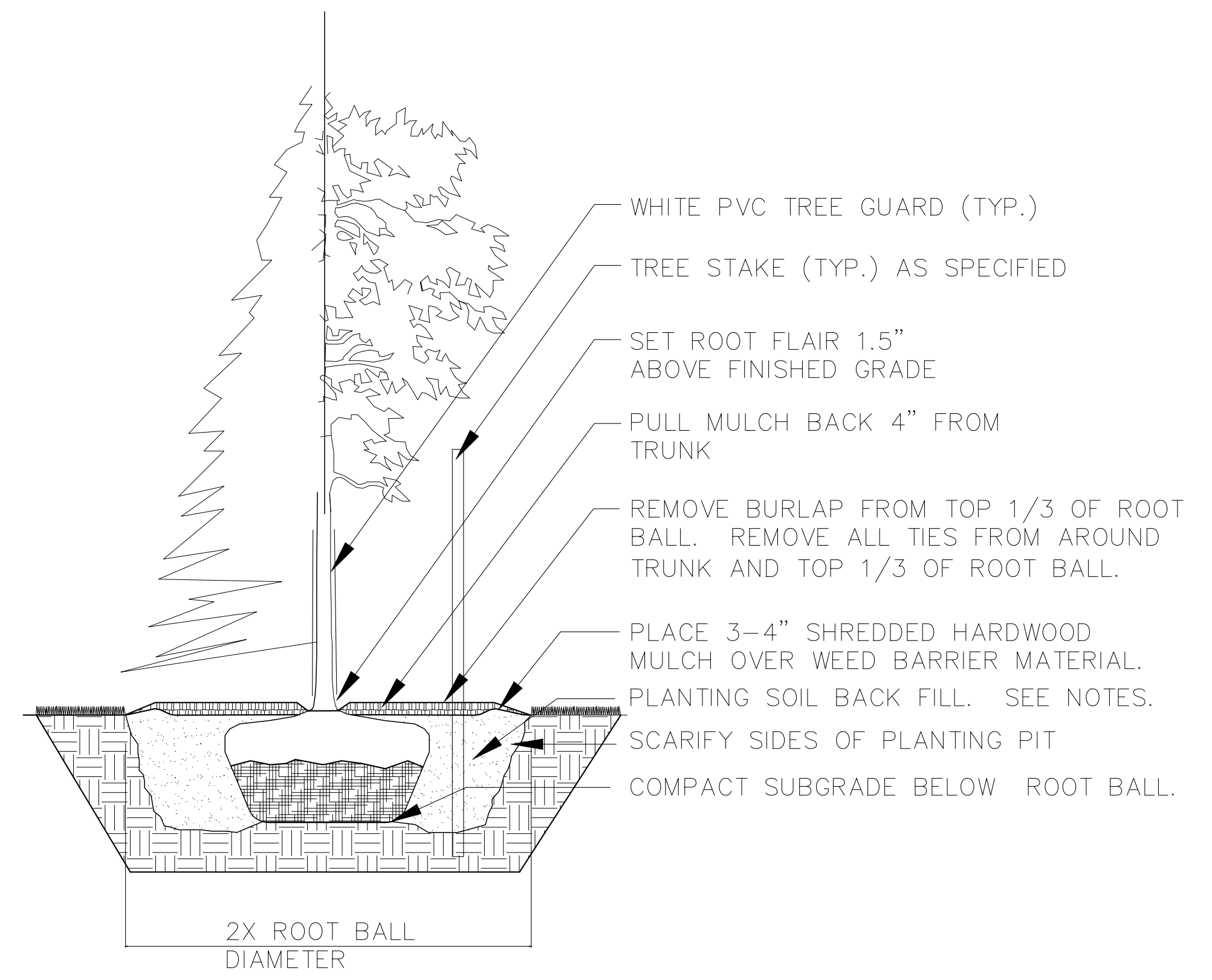


SHEET KEY

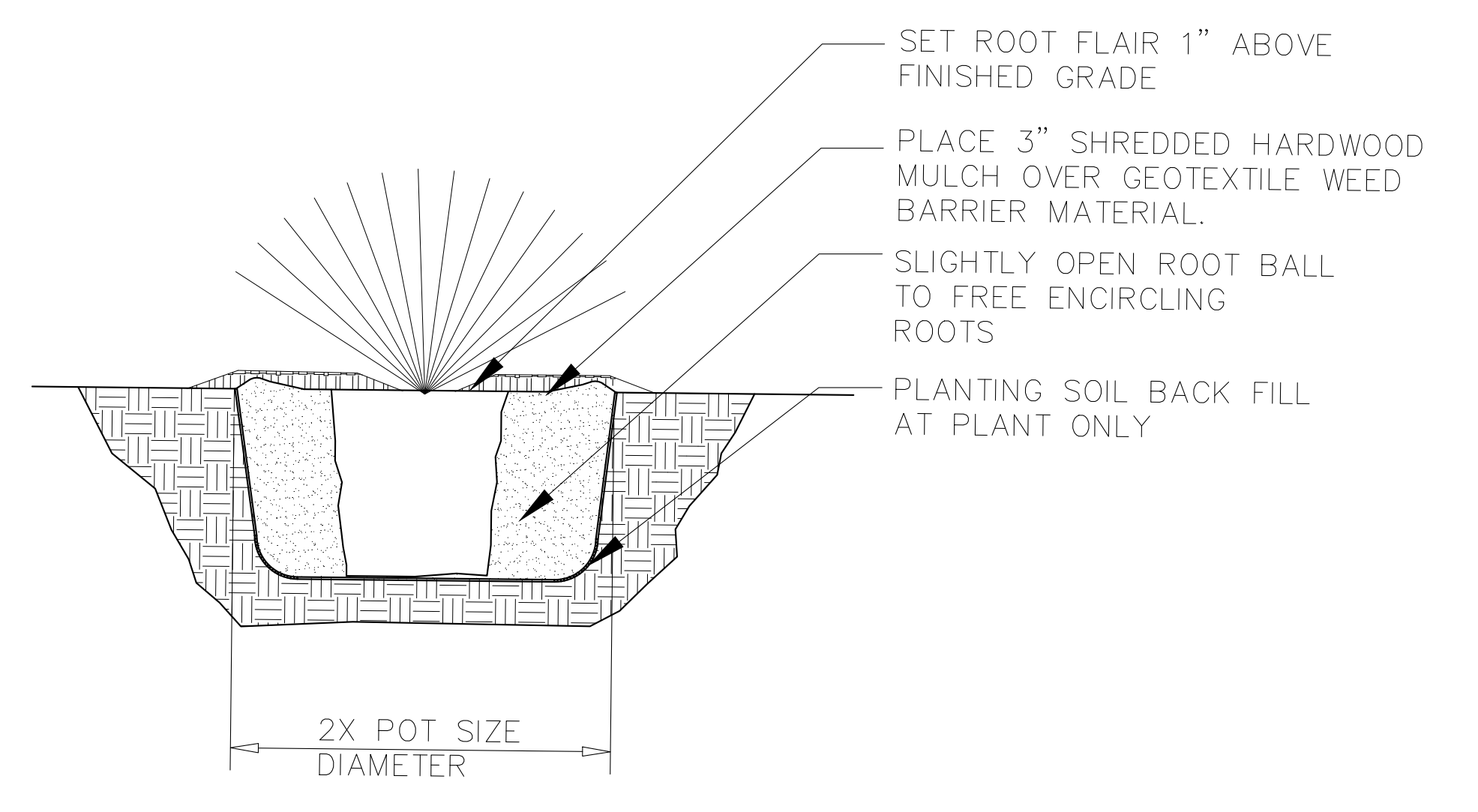
SHEET TITLE	LANDSCAPE PLAN
DATE	8/28/15
DRAWN BY:	ERJ
CHECKED BY:	LWS
PROJECT NUMBER	15520
SHEET NUMBER	LA.1

LANDSCAPE NOTES:

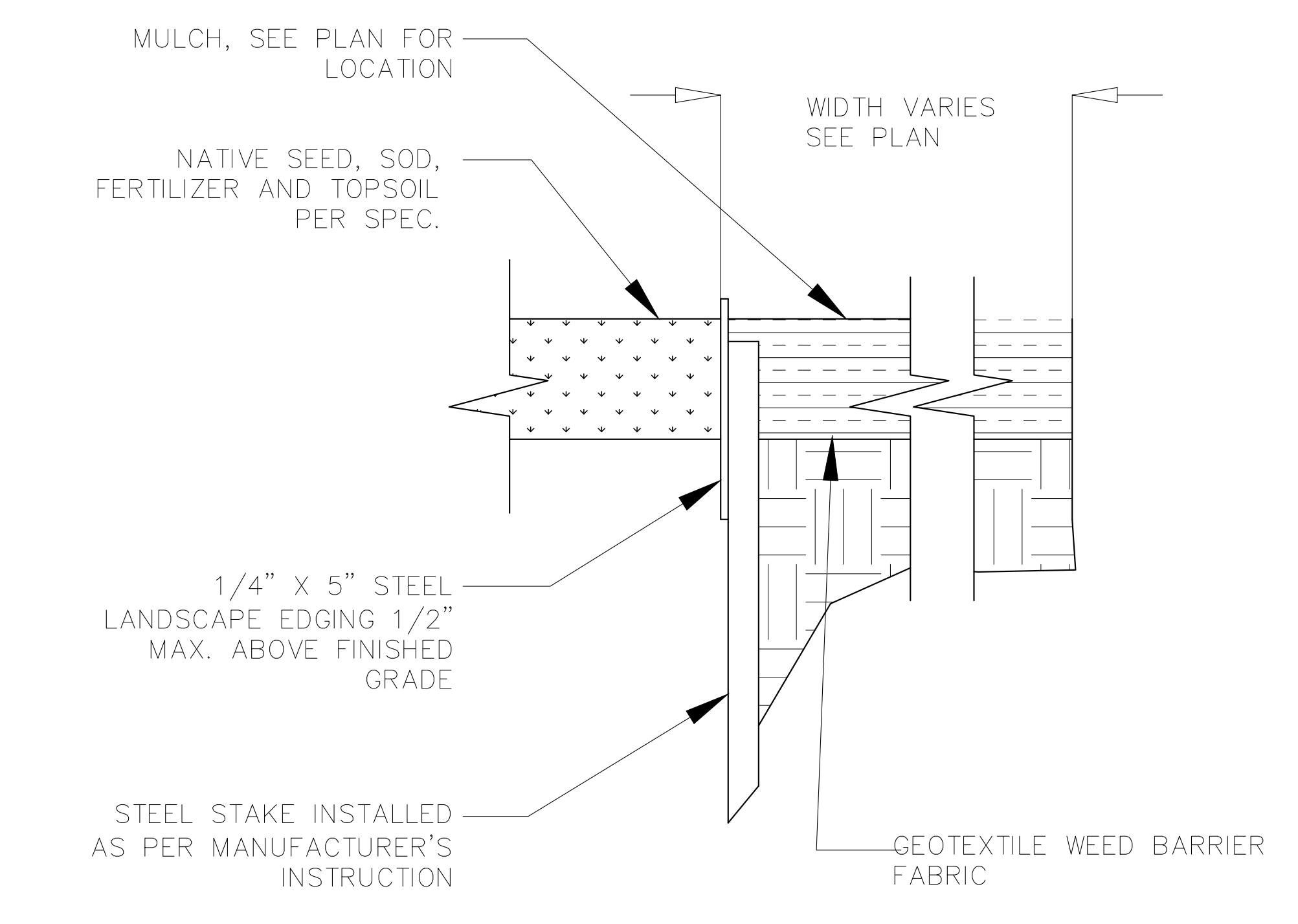
1. ALL LANDSCAPED AREAS ARE TO RECEIVE A MINIMUM OF 4" OF TOPSOIL. SEE 2900 SPECIFICATION.
2. ALL PLANT MATERIAL SHALL BE HEALTHY, VIGOROUS, AND FREE OF PESTS AND DISEASE.
3. ALL PLANT MATERIAL SHALL BE CONTAINER GROWN OR BALLED AND BUR LAPPED AS INDICATED IN THE PLANT LIST.
4. ALL TREES SHALL HAVE A STRAIGHT TRUNK AND FULL HEAD AND MEET ALL REQUIREMENTS SPECIFIED.
5. ALL MATERIALS ARE SUBJECT TO THE APPROVAL OF THE LANDSCAPE ARCHITECT BEFORE, DURING, AND AFTER INSTALLATION.
6. ALL TREES MUST BE GUYED OR STAKED AS SHOWN IN THE DETAILS.
7. ALL PLANTING AREAS SHALL BE COMPLETELY MULCHED AS SPECIFIED.
8. PRIOR TO CONSTRUCTION, THE CONTRACTOR SHALL BE RESPONSIBLE FOR LOCATING ALL UNDERGROUND UTILITIES AND SHALL AVOID DAMAGE TO ALL UTILITIES DURING THE COURSE OF THE WORK. LOCATIONS OF EXISTING BURIED UTILITY LINES SHOWN ON THE PLANS ARE BASED UPON BEST AVAILABLE INFORMATION AND ARE TO BE CONSIDERED APPROXIMATE. IT SHALL BE THE RESPONSIBILITY OF THE CONTRACTOR 1) TO VERIFY THE LOCATIONS OF UTILITY LINES AND ADJACENT TO THE WORK AREA 2) TO PROTECT OF ALL UTILITY LINES DURING THE CONSTRUCTION PERIOD 3) TO REPAIR ANY AND ALL DAMAGE TO UTILITIES, STRUCTURES, SITE APPURTENANCES, ETC. WHICH OCCURS AS A RESULT OF THE CONSTRUCTION.
9. THE CONTRACTOR SHALL BE RESPONSIBLE FOR VERIFYING ALL QUANTITIES SHOWN ON THESE PLANS BEFORE PRICING THE WORK.
10. CONTRACTOR SHALL BE RESPONSIBLE FOR DELIVERY SCHEDULE AND PROTECTION BETWEEN DELIVERY AND PLANTING PER SPECIFICATIONS TO MAINTAIN HEALTHY PLANT CONDITIONS.
11. THE CONTRACTOR SHALL BE RESPONSIBLE FOR FULLY MAINTAINING (INCLUDING BUT NOT LIMITED TO: WATERING, SPRAYING, MULCHING, FERTILIZING, ETC.) ALL OF THE PLANT MATERIALS AND LAWN FOR THE PERIOD OF TIME SHOWN IN THE 02900 SPEC.
12. ANY PLANT MATERIAL WHICH IS DISEASED, DISTRESSED, DEAD, OR REJECTED (PRIOR TO SUBSTANTIAL COMPLETION) SHALL BE PROMPTLY REMOVED FROM THE SITE AND REPLACED WITH MATERIAL OF THE SAME SPECIES, QUANTITY, AND SIZE AND MEETING ALL PLANT LIST SPECIFICATIONS.
13. THE CONTRACTOR SHALL COMPLETELY GUARANTEE ALL PLANT MATERIAL FOR A PERIOD DEFINED IN THE 02900 SPEC. THE CONTRACTOR SHALL PROMPTLY MAKE ALL REPLACEMENTS DURING THE NORMAL PLANTING SEASON.
14. AFTER BEING DUG AT THE NURSERY SOURCE, ALL TREES IN LEAF SHALL BE ACCLIMATED FOR TWO (2) WEEKS UNDER A MIST SYSTEM PRIOR TO INSTALLATION.
15. STANDARDS SET FORTH IN "AMERICAN STANDARD FOR NURSERY STOCK" REPRESENT GUIDELINE SPECIFICATIONS ONLY AND SHALL CONSTITUTE MINIMUM QUALITY REQUIREMENTS FOR PLANT MATERIAL.
16. WHERE SHOWN ON THE PLANS AND DETAILS, PLANTING BEDS ARE TO BE COMPLETELY COVERED WITH A HARDWOOD MULCH FROM A LOCAL SOURCE HARVESTED IN A SUSTAINABLE MANNER TO A MINIMUM DEPTH OF FOUR INCHES.
17. REFER TO SPECIFICATIONS FOR INFORMATION NEEDED FOR IMPLEMENTATION OF PLANTING PLANS.
18. WEED MAT IS REQUIRED IN LANDSCAPED ISLANDS AS SPECIFIED.
19. ALL PLANT MATERIAL QUANTITIES SHOWN ARE APPROXIMATE. CONTRACTOR SHALL BE RESPONSIBLE FOR COMPLETE COVERAGE OF ALL PLANTING BEDS AT SPACING SHOWN.
20. THE CONTRACTOR IS ENCOURAGED TO COMPLETE TEMPORARY OR PERMANENT SEEDING OR SODDING IN STAGES FOR SOIL STABILIZATION AS AREAS ARE COMPLETED AFTER GRADING.
21. ALL NEW TREES PLANTED AS PART OF THE PROJECT SHALL RECEIVE EITHER IRRIGATION OR HAVE GATOR BAGS INSTALLED. THE GATOR BAGS ARE TO BE MAINTAINED PER MANUFACTURER'S INSTRUCTIONS THROUGHOUT THE WARRANTY PERIOD.
22. ALL DISTURBED AREAS ARE TO BE SODDED WITH 4" OF TOPSOIL UNLESS PART OF A MASS MULCH BED.



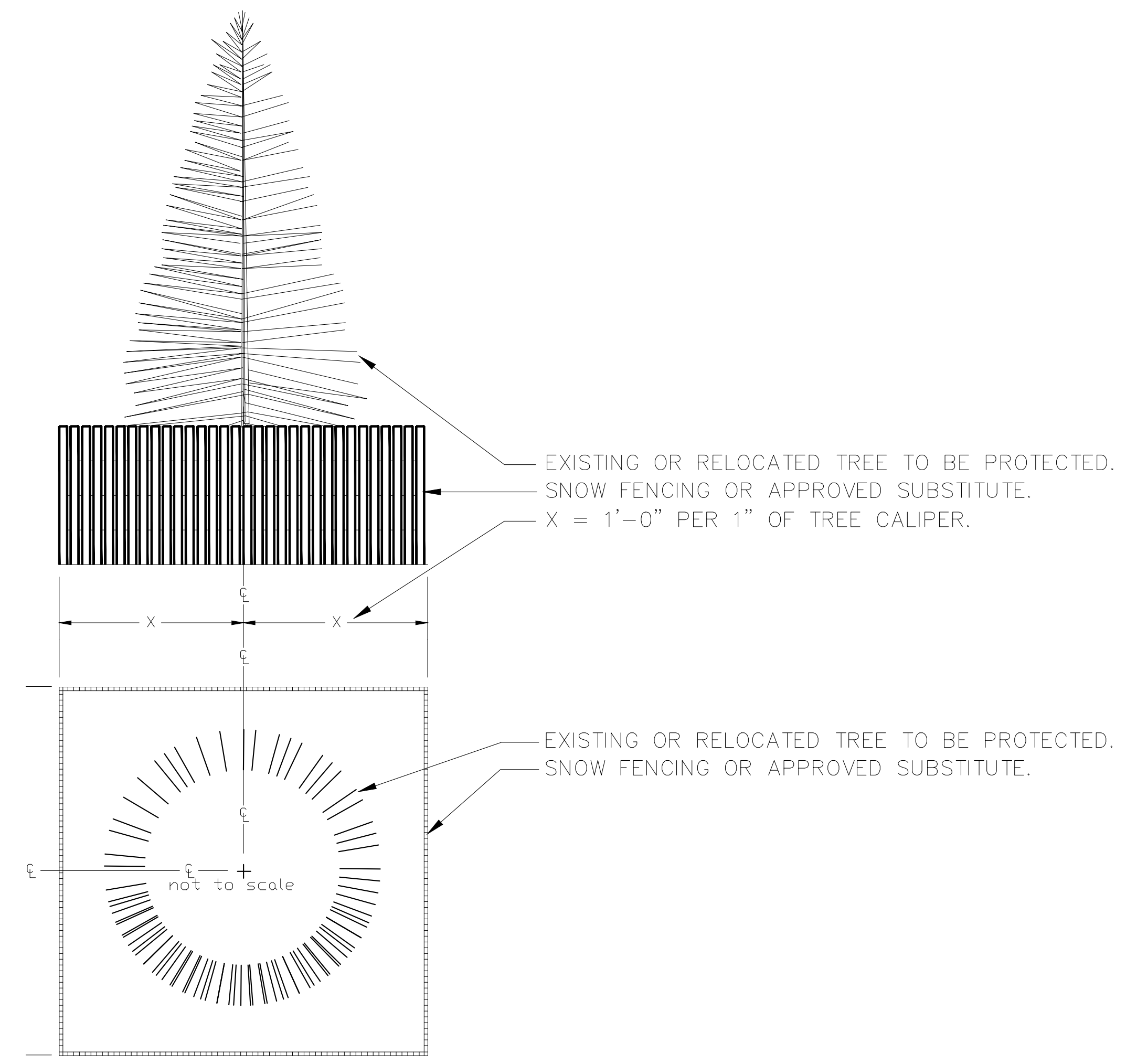
1 DECIDUOUS/EVERGREEN TREE PLANTING DETAIL
LA.2 not to scale



2 SHRUB/GRASS PLANTING DETAIL
LA.2 not to scale



3 EDGER DETAIL
LA.2 not to scale



4 TREE PROTECTION FENCE DETAIL
LA.2 not to scale



ASSOCIATES

WWW.SASLANDARCH.COM
219 WEST FIRST STREET, SUITE 350
DULUTH, MN 55802
(P) 218.391.1335
(F) 218.722.6697

COPYRIGHT 2015 ALL DRAWN AND WRITTEN INFORMATION APPEARING HEREIN SHALL NOT BE DUPLICATED, DISCLOSED OR OTHERWISE USED WITHOUT WRITTEN CONSENT OF SAS+ASSOCIATES.

ISSUE RECORD/REVISION	
PURPOSE	DATE

SHEET KEY

SHEET TITLE
LANDSCAPE DETAILS

DATE: 8/28/15
DRAWN BY: ERJ
CHECKED BY: LWS
PROJECT NUMBER: I5520

SHEET NUMBER
LA.2