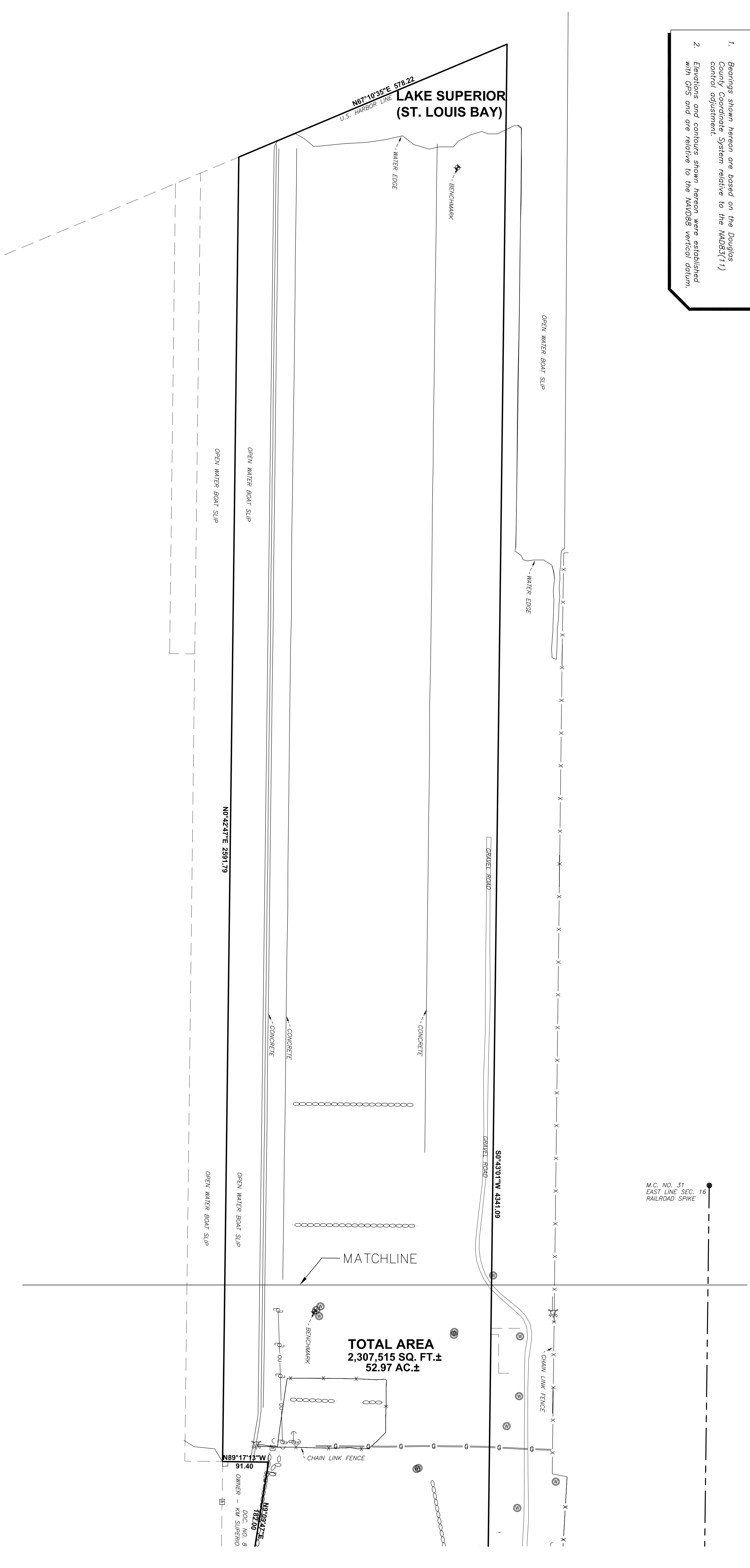


BOUNDARY SURVEY

LOCATED IN THE NE $\frac{1}{4}$ OF SECTION 16, T. 49 N., R. 14 W., IN THE CITY OF SUPERIOR, DOUGLAS COUNTY, WISCONSIN

GENERAL NOTES

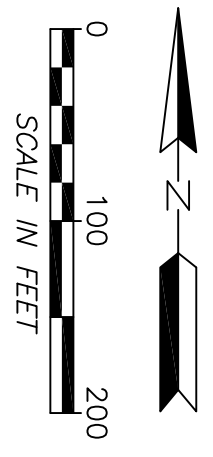
- Bearings shown hereon are based on the Douglas County Coordinate System relative to the NAD83(11) control adjustment.
- Elevations and contours shown hereon were established with GPS and are relative to the NAVD88 vertical datum.



LEGEND

●	FOUND MONUMENT	⊠	ELECTRIC METER
⊙	SEWERY MANHOLE	⊠	ELECTRIC TRANSFORMER
⊠	STOP SIGN	⊠	TRAFFIC SIGN
⊠	FLARED END SECTION	⊠	UTILITY POLE
⊠	MONITORING WELL	⊠	ANCHOR CABLE
⊠	HYDRANT	⊠	COMMUNICATIONS PEDESTAL

— X —	FENCE LINE
— >> —	STORM SEWER
— > —	SEWERY MANHOLE
— G —	GAS LINE
— ◊ —	UNDERGROUND COMMUNICATION LINE
— ○ —	OVERHEAD UTILITY LINE
— ⊠ —	RAILROAD
— ⊠ —	REMAINING WALL



		CLIENT NAME C. REISS TERMINALS LLC
BOUNDARY SURVEY		PROJECT TITLE
DWN BY: CHK'D JRN XXX	APP'D XXX	DWG DATE: 04/29/2022
PROJECT NO.: 193707141	SHEET NO.: 2 OF 2	SCALE: 1" = 100'