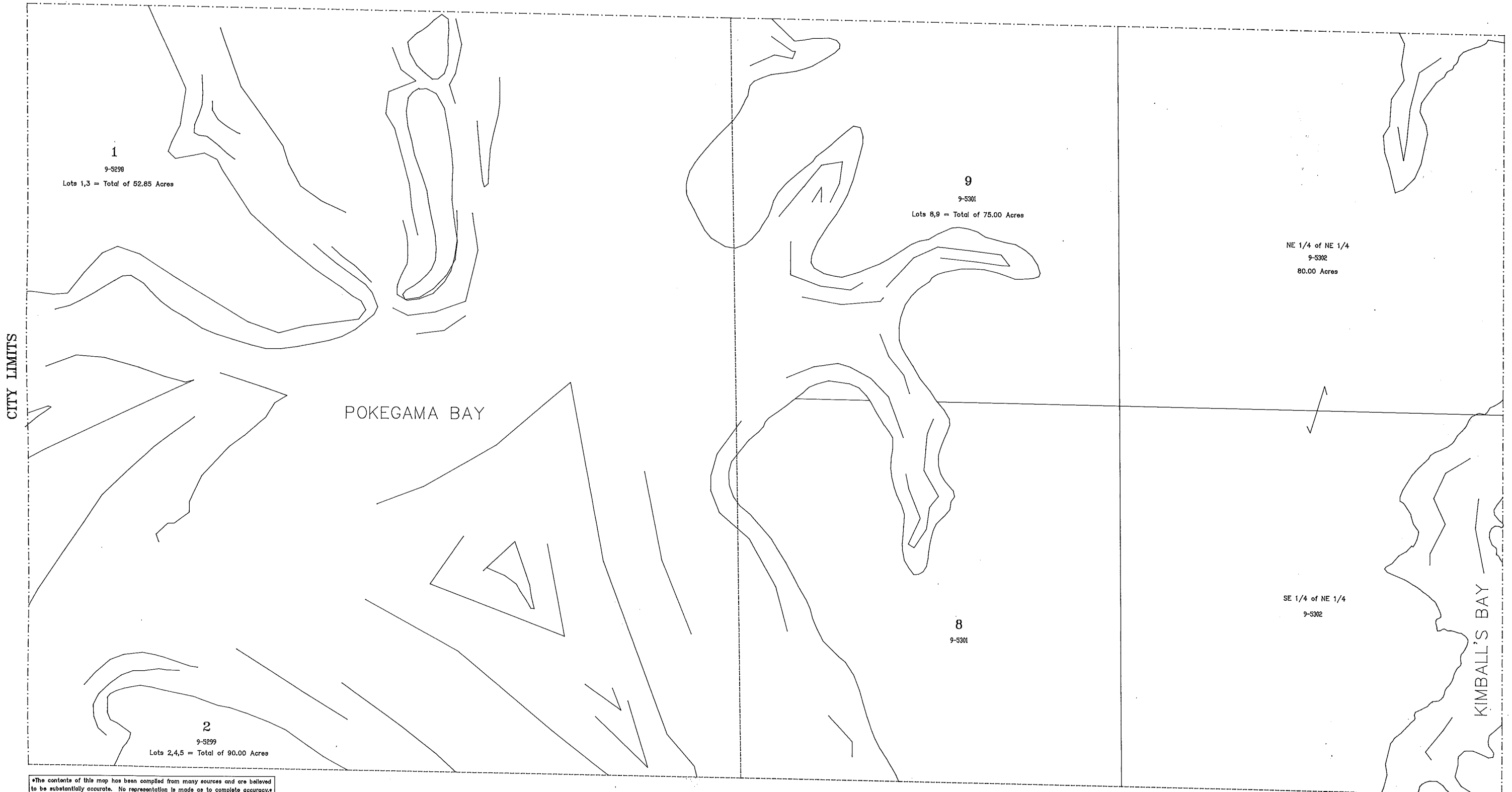
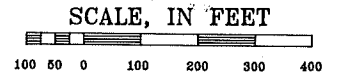




# NORTH 1/2 SEC. 30-49-14

Prepared By:  
Douglas County Clerk's Office, P.J. De Luca  
26 August 1992



1  
9-5298  
Lots 1,3 = Total of 52.85 Acres

9  
9-5301  
Lots 8,9 = Total of 75.00 Acres

NE 1/4 of NE 1/4  
9-5302  
80.00 Acres

POKEGAMA BAY

KIMBALL'S BAY

CITY LIMITS

2  
9-5299  
Lots 2,4,5 = Total of 90.00 Acres

8  
9-5301

SE 1/4 of NE 1/4  
9-5302

\*The contents of this map has been compiled from many sources and are believed to be substantially accurate. No representation is made as to complete accuracy.\*