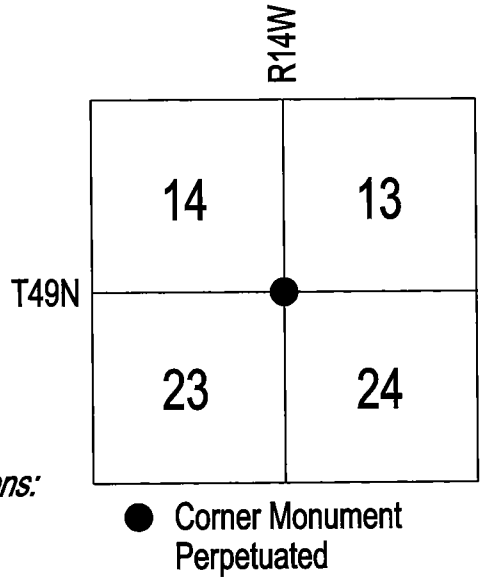


# U.S. PUBLIC LAND SURVEY MONUMENT RECORD

This form is designed to fulfill all requirements of Wisconsin Administrative Code, Chapter A-E 7.08, U.S. Public Land Survey Record (3) (a)(b)(c)(d)(e)(f)(g)(h)(i).

*Southeast Corner of Section 14,  
Township 49 North, Range 14 West,  
City of Superior, Douglas County*



*I, William G. Anderson, do hereby certify that the monument and accessories described hereon perpetuate the location of this corner.*

*Description of original monument and accessories and subsequent restorations:*

*April 6, 1854, George R. Stuntz, Deputy Surveyor  
West between Sections 4 & 33  
Variation 10°32' E.  
25.32 chains, 15" White Pine  
32.75 chains, street, bears SE  
40.00 chains, set quarter section corner  
45.00 chains, street bears SE  
65.00 chains, stream 8 links wide, bears NE  
63.50 chains, street bears NE  
80.00 chains, set post, Corner to Sections 13, 14, 23 & 24  
7" Black Ash, N39°E, 45 Links  
6" Black Ash, S63°W, 35 Links*

*1889, T&H  
W.P.A. Map of Section 14  
Indicates an iron at Corner*

*1891, E.B. Banks  
City of Superior Monumental Map  
Indicates an iron at the corner 4.15' south of the centerline monument for Belknap Street & Hill Avenue.*

*Evidence found and justification for locating corner as shown:*

*I was not able to locate any evidence of the original survey.*

*Monuments were recovered at the E1/4 Corner of Section 23 and at the centerline intersection of Belknap Street and Hill Avenue. A monument for the E1/4 Corner of Section 14 was reestablished using the monumental map data and recovered street centerline monuments.*

*I set a Mag spike for this corner 4.15' south of the centerline monument at Belknap Street and Hill Avenue on the projection of a straight line between the E1/4 Corner of Section 14 and the centerline monument. Accessories were established as shown on the sketch.*

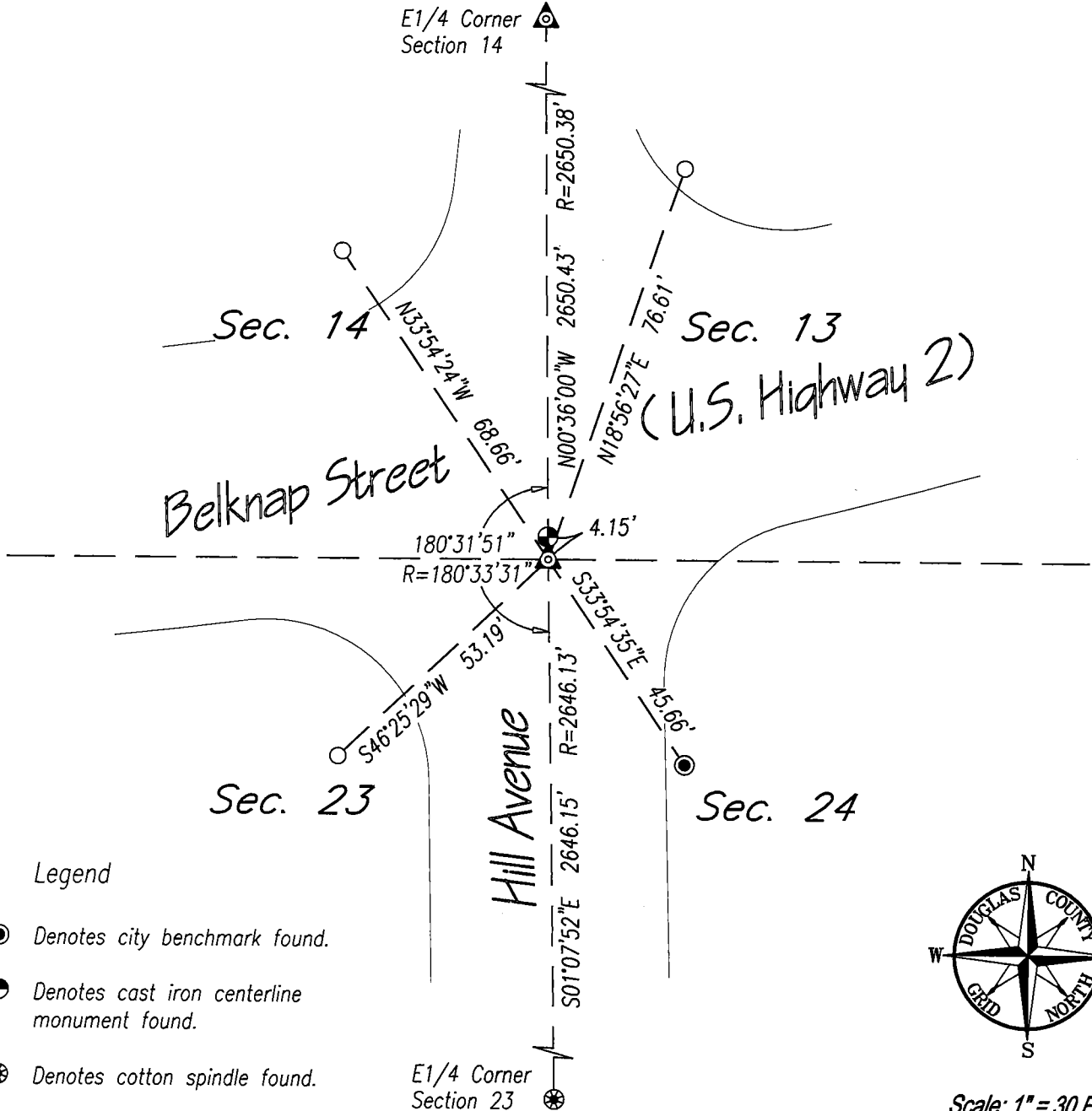
*GPS observations and conventional traverse methods were used to tie the corner and accessories into the Douglas County Coordinate System.*

(Sketch on Back)

Index No. N - 21  
PS140000

T49N R14W

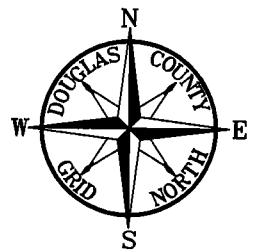
E1/4 Corner  
Section 14



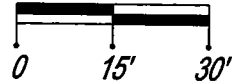
Legend

- Denotes city benchmark found.
- ⊕ Denotes cast iron centerline monument found.
- ⊗ Denotes cotton spindle found.
- ⊙ Denotes Mag spike set.
- Denotes 3/4" x 24" rebar set with Douglas County Ref. Mon. cap.
- R= Denotes recored angle or distance.

E1/4 Corner  
Section 23

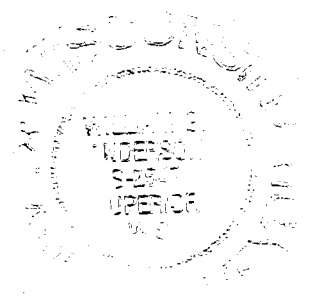


Scale: 1" = 30 Ft.



Bearings shown are referenced to the Douglas County Coordinate System.

I, William G. Anderson, Registration Number S-2547, certify that the corner location on this record was determined by me or under my direction and that this U.S. Public Land Survey Monument Record is correct and complete to the best of my knowledge and belief.



William G. Anderson  
Signature

2/15/10  
Date