

The **Pictometry CONNECT Uploader for ArcMap** is an add-in for ArcMap that allows Pictometry customers to upload their GIS layers and symbology from ArcMap directly to their CONNECT account.

This document provides an overview of Version 1.2 of the Pictometry CONNECT Uploader for ArcMap for CONNECT Parent and Organization Administrators.

NOTE: The Uploader is compatible with ArcMap 10.0 SP1 and later.

Benefits of using the Uploader

- ✓ Customers can take advantage of layers already configured in ArcMap. There's no need to use Pictometry Administration to configure layers.
- ✓ No need to configure your layers twice. Configure them just once—in ArcMap only.
- ✓ After they're uploaded, the layers are ready to use.
- ✓ The Uploader supports symbology created in ArcMap. Symbols not previously supported (such as fills and icons for points) can now be rendered in Pictometry products.

Overview

What you can upload

The Uploader supports the upload of point, line, or polygon layers. You can upload up to 2GB of source data per layer from these sources:

- shapefiles
- SDE (except for SDE spatial views)
- personal geodatabases

NOTE: Labels created by Maplex cannot be uploaded. Also, SDC layers cannot be uploaded.

Uploaded layers are in raster format. Group layers are split up and uploaded individually.

NOTE: Layer names are limited to 45 characters in length.

Supported symbols

The following symbol types are either fully or partially supported:

Marker symbols

- simple marker (might be converted to default shapes)
- character marker
- picture marker
- arrow marker (might be converted to a default triangles)
- multilayer marker

Line symbols

- cartographic line (some styles may be changed to simple lines)
- hash line (might default to a simple line)
- marker line (might be changed to a simple line)
- simple line
- picture line (might not display the same as in ArcMap)
- multilayer line

Fill symbols

- simple fill
- marker fill (markers may be changed to default circles)
- line fill (these may be converted to cross hatching)
- picture fill
- gradient (these are displayed as a single, semi-transparent color)
- multilayer fill

NOTE: Chart symbols are *not* supported.

Supported layer symbologies

The Uploader can render the following properties of ArcMap layers. (These properties are listed on the Symbology tab of a layer's Layer Properties dialog box, under the "Show" box.)

- Features ("Single symbol")
- Categories ("Unique Values" only)
- Quantities ("Graduated colors" only)

Layer visibility

When you upload a layer, that layer's visibility settings (the minimum and maximum zoom levels at which the layer is shown or not shown in ArcMap) are uploaded from ArcMap. In CONNECT, that layer will be displayed at the same zoom levels as it is in ArcMap; you won't need to set the layer's visibility in CONNECT.

Labeling

Only data that resides in a layer is uploaded to CONNECT and can be used as layer labels. Other text (entered in ArcMap) that is not part of an ArcMap layer is not uploaded, even if that data is used as layer labels in ArcMap.

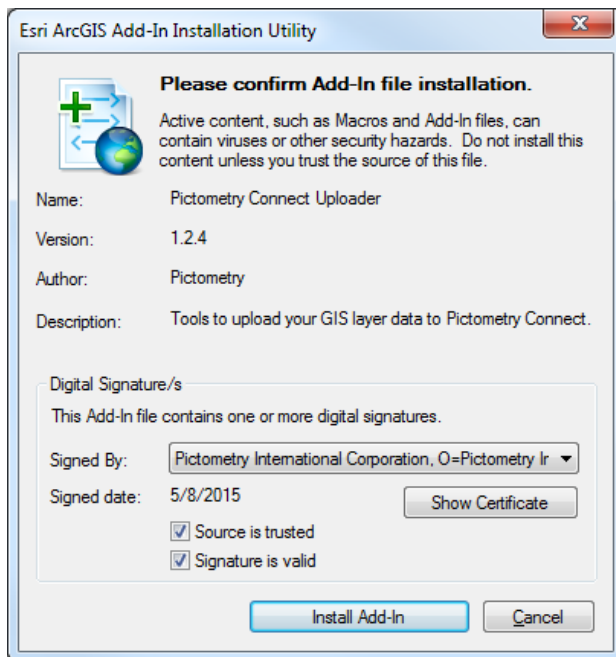
NOTE: Expressions are *not* supported.

If labels are applied to line symbols (such as street centerlines), CONNECT will label each individual segment that is in the shapefile database. If you do not wish to have every segment of a street labeled, we recommend aggregating the segments before uploading.

Installing the Uploader

Installing the Uploader

1. Before installing the CONNECT Uploader for ArcMap, remove any previous versions, as described in the next topic "To install a newer version of the Uploader."
2. Make sure that ArcMap is closed before you begin installing the Uploader Add-in.
3. Open the folder where you downloaded the install file.
4. Double-click the install file **PictGisUploadAI.esriAddIn**. An installation dialog box opens.



5. Click **Install Add-In**. A dialog box confirms if the installation was successful.
6. In ArcMap, click **Customize**⇒**Toolbars**. Select **Pictometry Connect Uploader**. The toolbar button appears over the Map window.
7. Drag the toolbar button to the Toolbar area if it isn't there.

Installing a newer version of the Uploader

Delete the existing Uploader as follows:

1. In ArcMap, click **Customize**⇒**Add-In Manager**.
2. Select the **Pictometry Connect Uploader Add-In** and click **Delete This Add-In**.
3. Click **Yes**. Make sure the Add-In is no longer displayed.
4. Close the Add-In Manager and close ArcMap, then install the new version as described in the previous procedure.

Using the Uploader

You can use the Pictometry CONNECT Uploader for ArcMap to do these tasks:

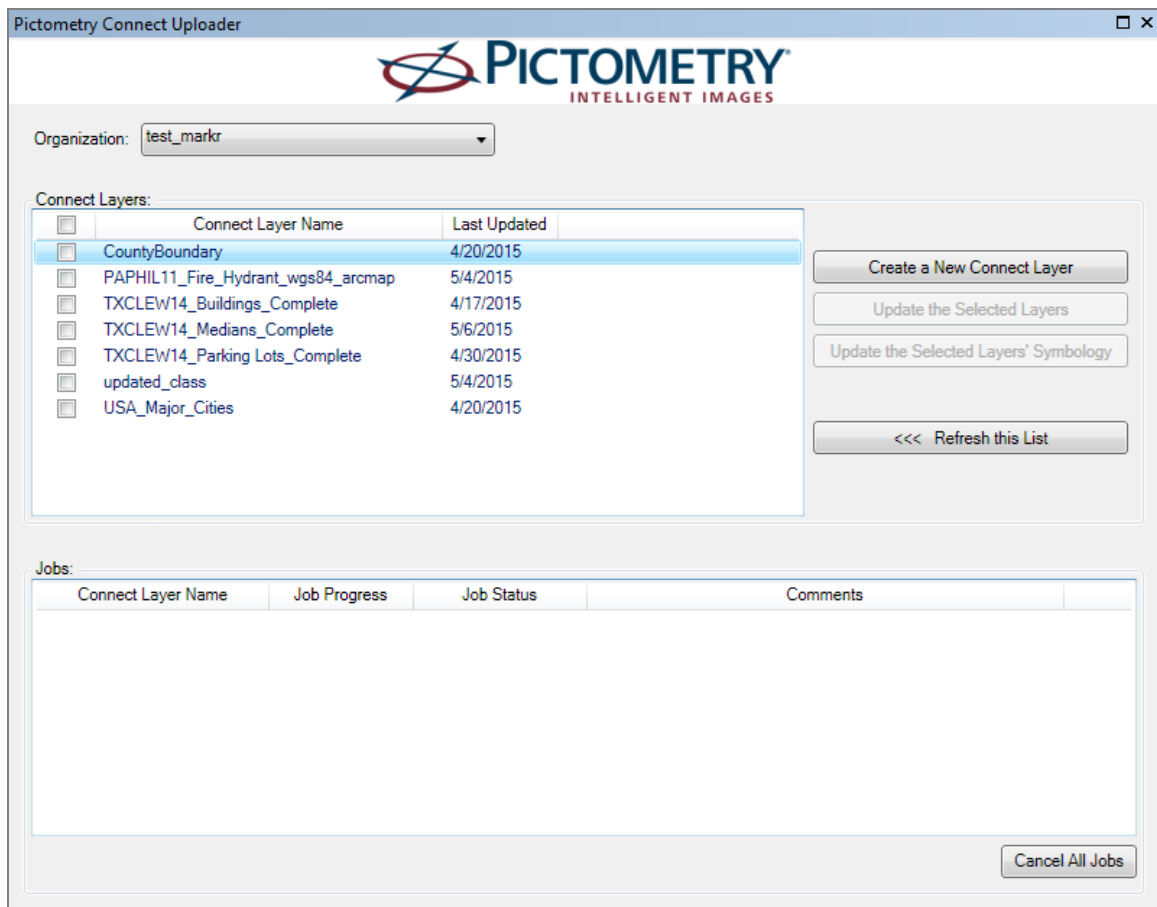
- Upload layers to CONNECT.
- Update layers previously uploaded to CONNECT.

NOTE: If a layer was previously uploaded with the Uploader for ArcMap, you can also update that that layer's symbology when you update the layer.

Opening the Uploader

To open the Uploader, do the following:

1. Install the Uploader for ArcMap Add-in. Once installed the Uploader appears in ArcMap as a toolbar with a single button.
2. Open the ArcMap map.
3. Activate the data frame you wish to upload layers from.
4. Click the **Uploader** button and enter your CONNECT credentials on the Login page. (Only CONNECT Administrators can log in to the Uploader.) The Pictometry CONNECT Uploader application opens.



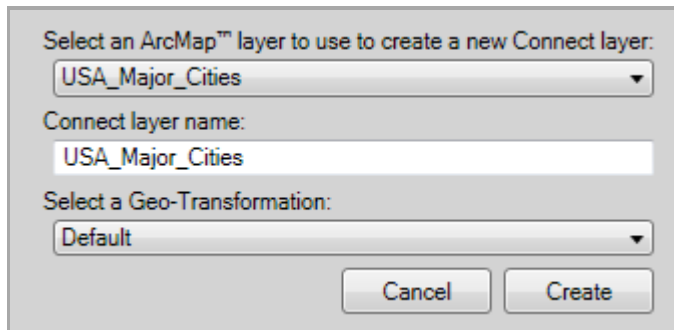
Uploading a layer to CONNECT

1. If not already open, open the Uploader by clicking the **Uploader** button in ArcMap and logging in.
2. Choose the organization you want to upload layers to. If the selected organization has existing CONNECT layers, they are listed.

NOTE: Sub-organization Administrators can upload layers only to their own organization. Parent Organization Administrators can upload layers to the parent organization or to any of that parent's sub-organizations.

3. Click **Create a New Connect Layer**.

The following dialog box opens.



4. From the ArcMap layer list, select the ArcMap layer name.

NOTE: If the ArcMap layer name is longer than 45 characters, a message appears and only the first 45 characters are used in CONNECT.

The ArcMap™ layer name is longer than the maximum length supported by Connect.

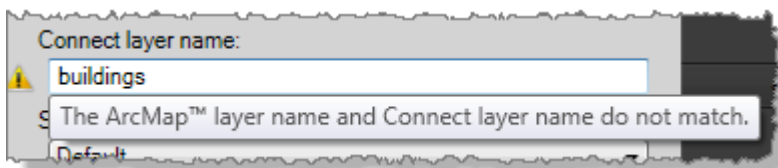
By default the CONNECT layer gets its name from the ArcMap layer name. This is recommended because it makes the process of updating the layer easier. However, if you want to create a different name for the CONNECT layer, complete Step 5 below.

5. (Optional) Type a custom name for the CONNECT layer. (The name field cannot be blank.)

The name you enter cannot already be used in CONNECT. If the name you enter is already in use, an error message appears and the Create button is disabled.

The Connect layer "txclew14_buildings_complete" is already in use.

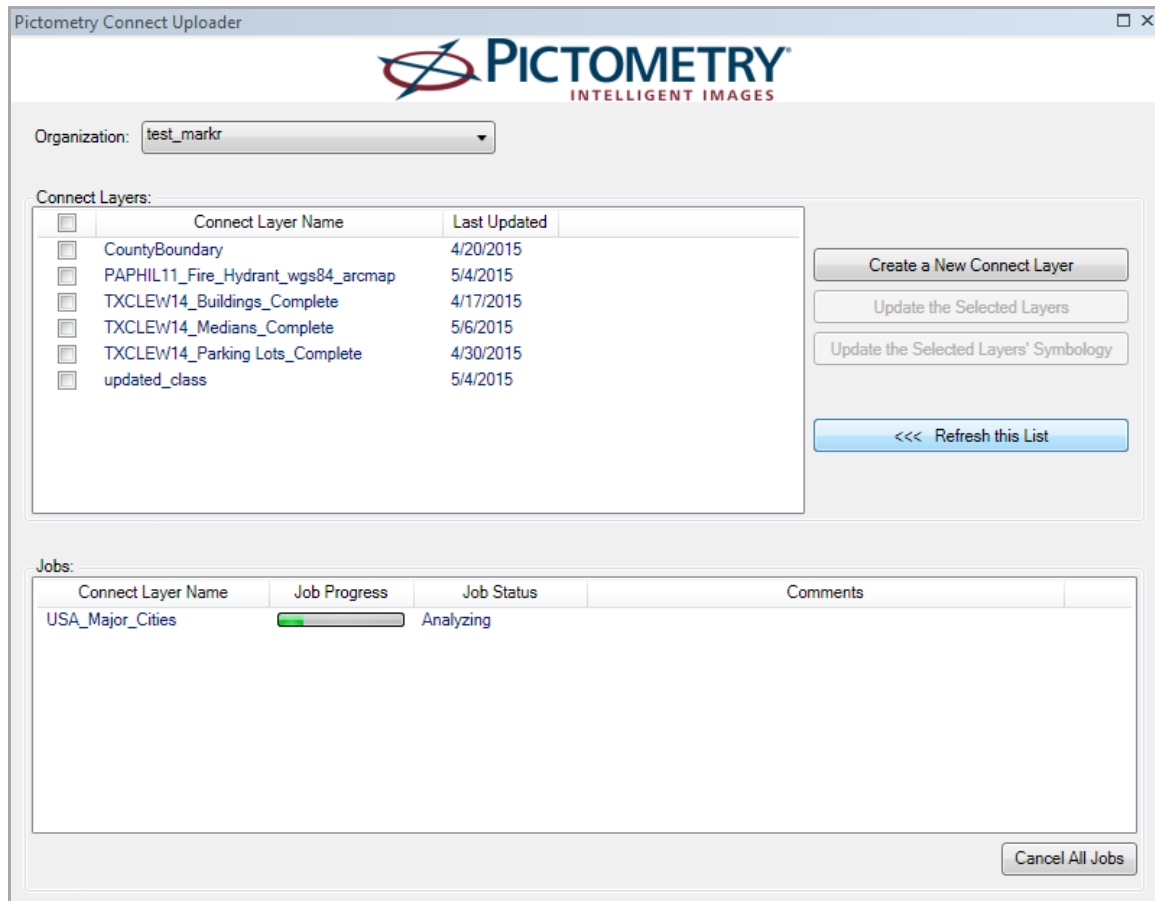
If you enter a CONNECT layer name and it doesn't match the ArcMap layer name, a warning message appears:



6. (Optional) From the Geo-Transformation list, select a transformation if you don't want to use the "Default" transformation.
7. Click **Create**.

IMPORTANT: Closing ArcMap or logging into Pictometry Administration while the upload is in progress will cause the upload to terminate.

The upload process begins. The application reports the progress of the upload and indicates when the upload is done. Because the update is immediate, users of the selected organization will see the uploaded layer as soon as the upload is done.



If you need to cancel an upload that is still in progress, click **Cancel All Jobs** (lower right corner of the Uploader window). The application will tell you if the upload is beyond the point at which it can be cancelled.

Properties for layers you upload cannot be changed in CONNECTAdmin. If you need to change an uploaded layer's properties, use the Uploader to do so as described in the next topic.

NOTE: If the newly added layer does not align properly with the land features, you may need to update it after selecting a different transformation. Use the procedure in the next topic. Be sure to select the "Update the Selected Layers" button so the entire layer is updated and the transformation list is available.

Updating layers previously uploaded

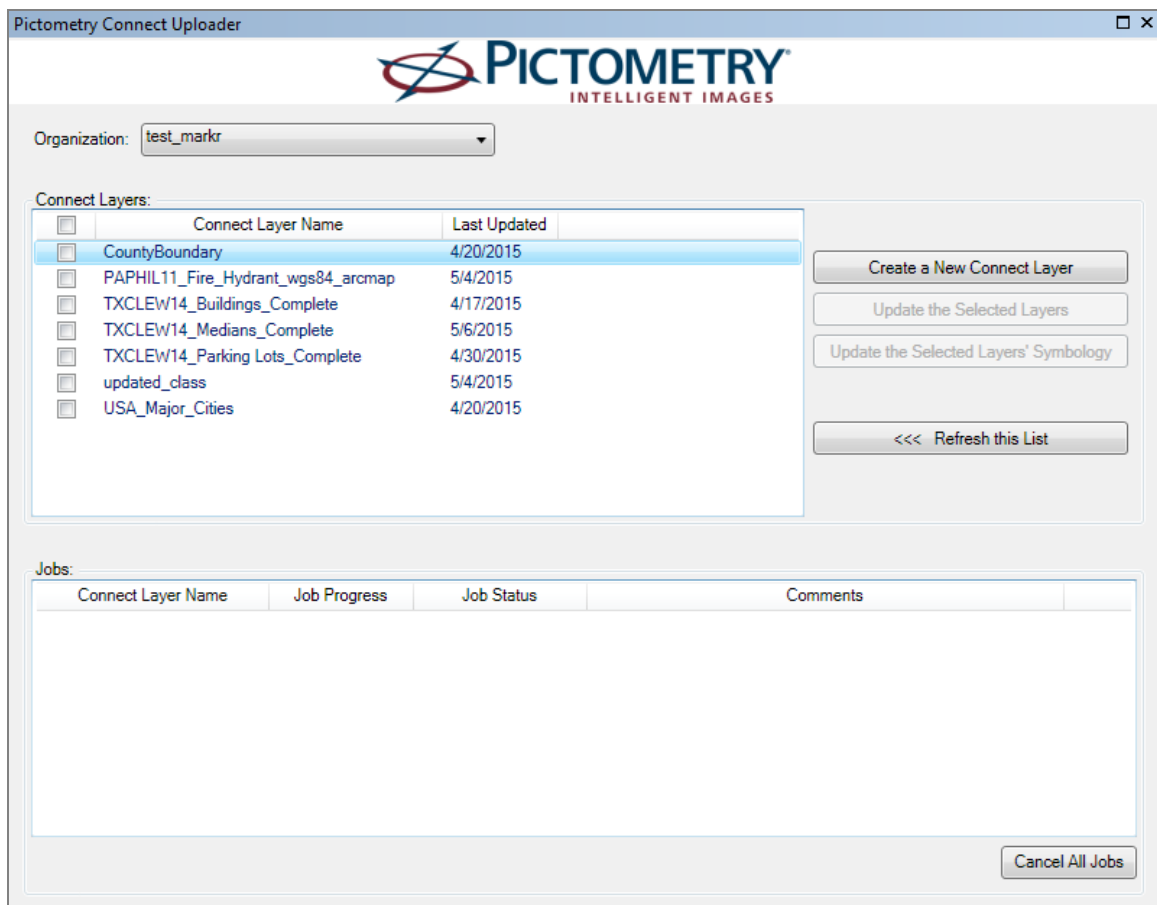
The Uploader provides two options for updating layers that were previously uploaded:

- **Update the Selected Layers**
- **Update the Selected Layers' Symbology**

The first option updates both the geometry and the symbology for the selected layers. Use this option to update a layer if either its shapefile or its database has changed. The second option updates only the symbology for the selected layers.

Here's the procedure for updating layers:

1. If not already open, open the Uploader.

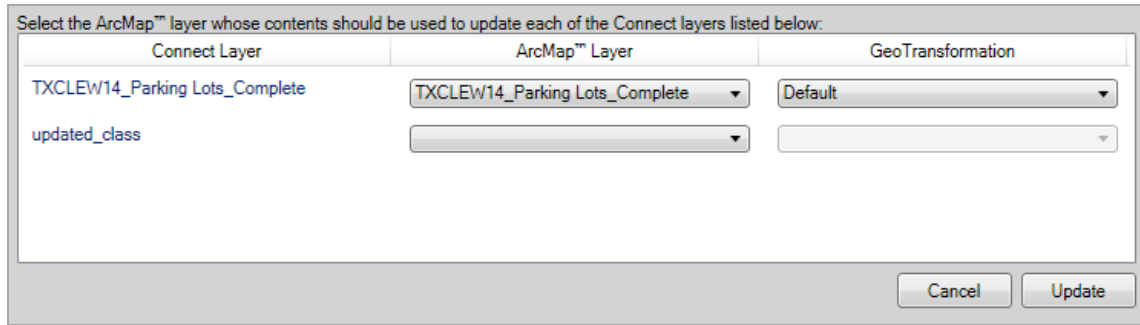


2. Choose the applicable organization. The organization's existing layers are shown; however, new layers that were just uploaded might not appear in the list.
3. To be sure that all uploaded layers are visible, click **Refresh this List**.
4. Select the check boxes for the CONNECT layers you wish to update.

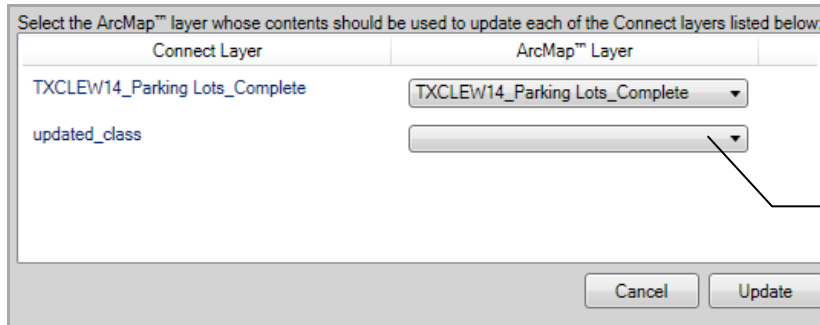
5. Select one of the following options:

To ...	Click this button ...
Update both the geometry and the symbology of the selected layers	Update the Selected Layers
Update only the symbology of the selected layers	Update the Selected Layers' Symbology

If you selected "Update the Selected Layers" this dialog box opens:



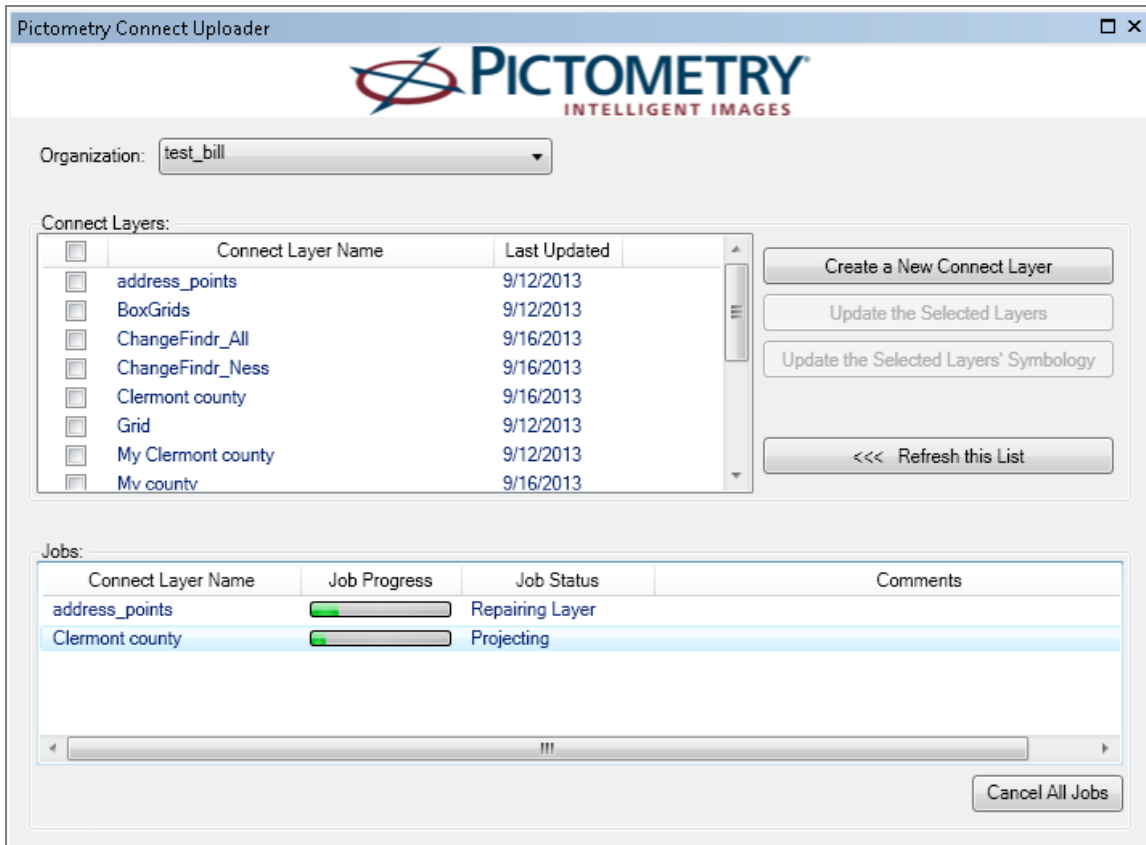
If you selected "Update the Selected Layers' Symbology" this dialog box opens:



If the ArcMap layer name is blank, then the layer's name has been changed in ArcMap since you last uploaded this layer.

The CONNECT layers you chose are shown on the left and their corresponding ArcMap layers are shown on the right.

6. If a layer name has changed in ArcMap, select the new name from the drop-down list.
7. (Optional) from the Geo-Transformation list, select a transformation if you selected "Update the Selected Layer" and don't want to use the "Default" transformation.
8. To begin uploading, click **Update**.



The progress of each layer is displayed as it uploads.