

Douglas County  
Wisconsin  
Statewide Parcel  
Initiative Report  
2023

December 18, 2023





# WI Statewide Parcel Initiative



WISCONSIN DEPARTMENT OF  
ADMINISTRATION

SCOTT WALKER  
GOVERNOR  
MIKE HUEBSCH  
SECRETARY

Wisconsin Land Information Program  
Post Office Box 8944  
Madison, WI 53708-8944  
Voice (608) 267-3369  
WLIP@wisconsin.gov  
www.doa.state.wi.us/WLIP

## Act 20 and the Wisconsin Land Information Program

Act 20, the biennial state budget for state fiscal years 2014 and 2015, has wide-ranging implications for the Wisconsin Land Information Program (WLIP). Changes to the WLIP generated by Act 20 fall under five broad categories:

- Initiative to Create a Statewide Digital Parcel Map
- Increase in Base Budget and Training & Education Grant Eligibility
- Increase in Land Information Fund Revenue
- Update Frequency for County Land Information Plans
- Penalties and Deadlines

Some of these changes, such as increased grant eligibility, take effect in the near term, while other measures, such as an increase in Land Information Fund revenue, will be implemented over the course of the next few years.

One of the most novel provisions of Act 20 affecting the WLIP is the directive for DOA to create an implementation plan for a statewide digital parcel map, which will be a collaborative effort with local governments. A complete, accurate, and continuously maintained digital parcel map would protect and grow Wisconsin's \$460 billion in taxable real estate assets, improve governmental services, and enhance the state's economic competitiveness.

### Initiative to Create a Statewide Digital Parcel Map

Section 186.<sup>1</sup> Act 20 directs DOA to create an implementation plan for a statewide parcel map and directs counties to coordinate their digital parcel mapping with the state. The implementation planning process will define the end product envisioned for a five-year process of statewide digital parcel map development—a geographic information system (GIS) that meets end users' business needs, whether at the state or local levels of government, as well as those of the private sector.

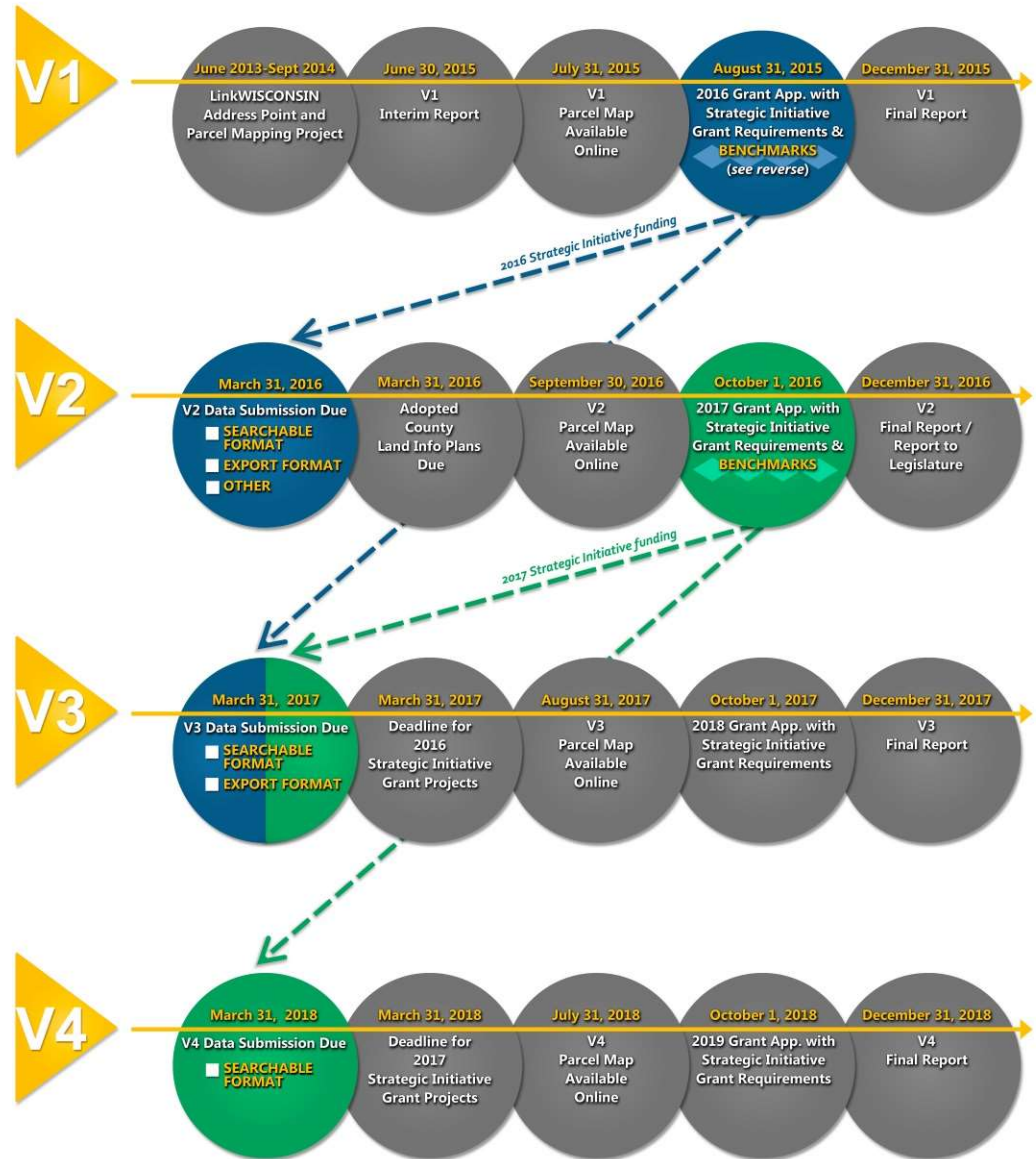
<sup>1</sup> SECTION 186. 16.967 (3) (h) of the statutes is created to read:  
16.967 (3) (h) Establish an implementation plan for a statewide digital parcel map.  
SECTION 186k. 16.967 (7) (a) 2m. of the statutes is created to read:  
16.967 (7) (a) 2m. In coordination with the department, the creation, maintenance, or updating of a digital parcel map.



# Benchmarks

WI Statewide Parcel  
Initiative  
Now at V7

## Statewide Parcel Map Initiative Timeline





# Benchmarks

# WI Statewide Parcel Initiative

## BENCHMARKS OVERVIEW

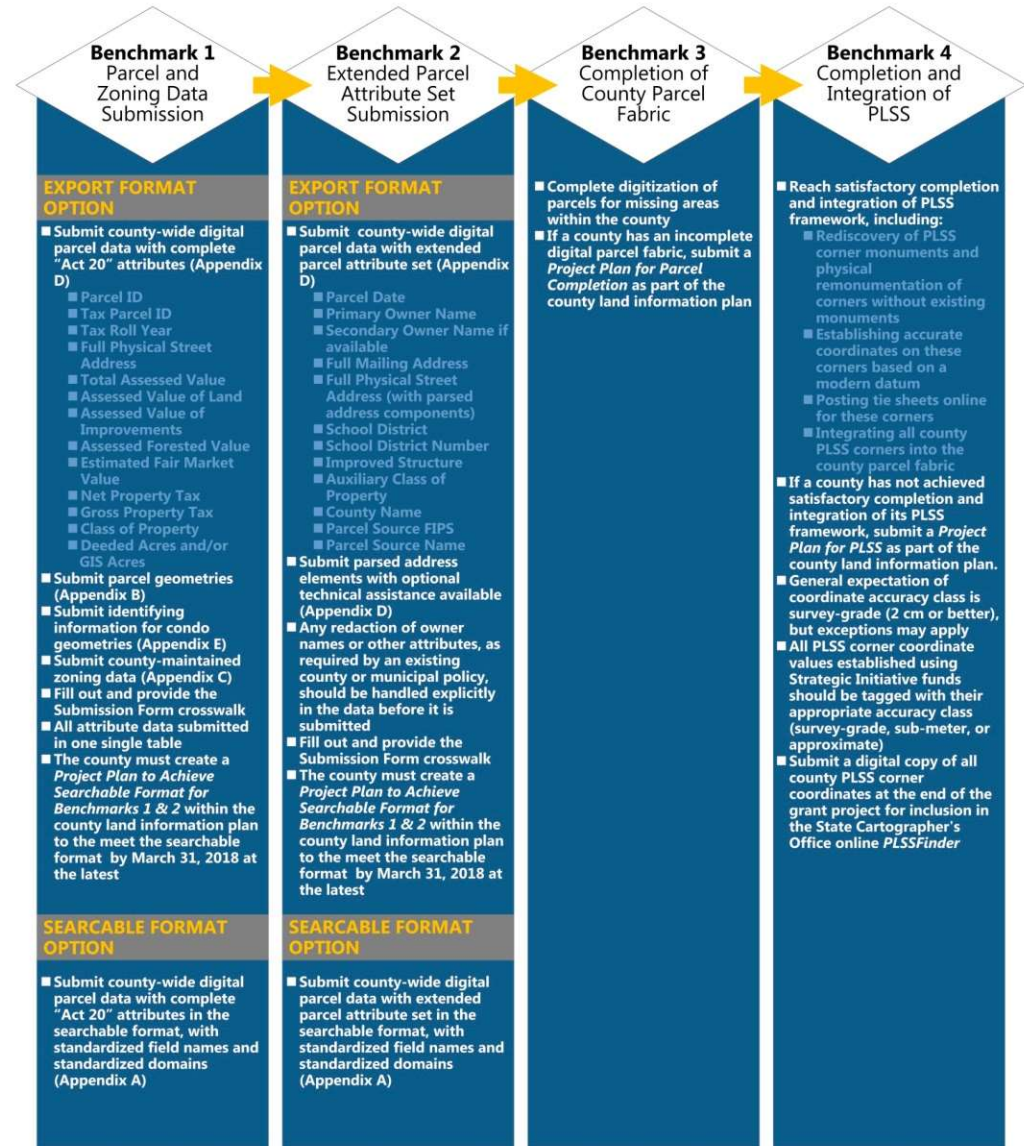
<b>V1</b> 2015				
	<ul style="list-style-type: none"> <li>✓ No standards</li> <li>✓ Submit county-wide digital parcel data with "Act 20" attributes as-is</li> <li>✓ Submit parcel geometries</li> <li>✓ Submit county-maintained zoning data</li> </ul>			
<b>V2</b> 2016				
<b>EXPORT FORMAT</b>	<ul style="list-style-type: none"> <li>✓ Submit county-wide digital parcel data with complete "Act 20" attributes</li> <li>✓ Submit parcel geometries</li> <li>✓ Submit identifying information for condo geometries</li> <li>✓ Submit county-maintained zoning data</li> <li>✓ Fill out and provide the Submission Form crosswalk</li> <li>✓ All attribute data submitted in one single table</li> </ul>	<ul style="list-style-type: none"> <li>✓ Submit county-wide digital parcel data with extended parcel attribute set</li> <li>✓ Submit parsed address components with optional technical assistance available</li> </ul>	<ul style="list-style-type: none"> <li>✓ Complete digitization of parcels for all missing areas within the county</li> <li>✓ Submit plan detailing current parcel status and future goals, timeline, and budget</li> </ul>	<ul style="list-style-type: none"> <li>✓ Reach satisfactory completion of PLSS network</li> <li>✓ General expectation is "survey-grade" (2 cm or better)</li> <li>✓ Lower-quality grades are "sub-meter" and "approximate"</li> <li>✓ Submit plan including current PLSS status, goals, timeline, budget, documentation of missing corners, and documentation of efforts to collaborate with neighboring counties</li> <li>✓ Submit copy of current PLSS dataset following PLSSFinder standard</li> </ul>
<b>SEARCHABLE FORMAT</b>	<ul style="list-style-type: none"> <li>✓ Submit county-wide digital parcel data with complete "Act 20" attributes in the searchable format, with standardized field names and standardized domains</li> </ul>	<ul style="list-style-type: none"> <li>✓ Submit county-wide digital parcel data with extended parcel attribute set in the searchable format, with standardized field names and standardized domains</li> </ul>		
<b>V3</b> 2017				
<b>SEARCHABLE FORMAT</b>	<ul style="list-style-type: none"> <li>✓ Submit county-wide digital parcel data with complete "Act 20" attributes in the searchable format, with standardized field names and standardized domains</li> </ul>	<ul style="list-style-type: none"> <li>✓ Submit county-wide digital parcel data with extended parcel attribute set in the searchable format, with standardized field names and standardized domains</li> </ul>	<ul style="list-style-type: none"> <li>✓ The same or similar to 2016 Benchmark 3</li> </ul>	<ul style="list-style-type: none"> <li>✓ The same or similar to 2016 Benchmark 4</li> </ul>



# Benchmarks

# WI Statewide Parcel Initiative

## Benchmarks



Summary of benchmarks from V1 Interim Report and V1 Interim Report Appendices



V7 submittal on  
March 31, 2020

# WI Statewide Parcel Initiative

## ACTION REQUIRED TO MEET STATEWIDE SCHEMA

### PARCEL FEATURE CLASS

WITH TAX ROLL DATA

- ✓ PARCELID
- ✓ TAXPARCELID
- ✓ PARCELDATE
- ✓ TAXROLLYEAR
- ✓ OWNERNME1
- ✓ OWNERNME2
- \* PSTLADDRESS
  - **PSTLADDRESS:** Approximately 4 records with partial mailing address values containing only city, state, and zip—such as ‘ SUPERIOR, WI 54880.’ Mailing address values should not be incomplete. Clean these records by entering a complete mailing address in the PSTLADDRESS field, or enter <Null> for parcels without a “complete” mailing address.
- ✓ SITEADDRESS
- ✓ ADDNUMPREFIX
- ✓ ADDNUM
- ✓ ADDNUMSUFFIX
- ✓ PREFIX – with standardized domains
- ✓ STREETNAME
- ✓ STREETTYPE – with standardized domains
- ✓ SUFFIX – with standardized domains
- ✓ LANDMARKNAME
- ✓ UNITTYPE
- ✓ UNITID
- ✓ PLACENAME
- ✓ ZIPCODE
- ✓ ZIP4
- ✓ STATE
- ✓ SCHOOLDIST – with standardized domains
- ✓ SCHOOLDISTNO – with standardized domains
- ✓ CNTASSDVALUE
- ✓ LNDVALUE
- ✓ IMPVALUE
- ✓ MFLVALUE
- ✓ ESTFMKVALUE
- ✓ NETPRPTA
- ✓ GRSRPTA
- \* PROPCCLASS – with standardized domains
  - **PROPCCLASS:** Some records with PROPCCLASS = 3 (Manufacturing) were either “0” or missing values in the tax roll-specific fields, such as CNTASSDVALUE, IMPVALUE, and LANDVALUE. These values seem to indicate a problem with the data export. This could be because the county populated these attributes with the 2021 work roll values instead of the 2020 “final tax roll” values, as the initial version of the GCS extract module was mistakenly programmed to do. Check your values in tax roll fields—perhaps with RPL—and ensure accuracy of values for future data submissions.
- ✓ AUXCLASS – with standardized domains
  - **AUXCLASS:** Per schema specs, for publicly owned parcels (AUXCLASS = X1-X4), the same owner should be designated the same way if they own multiple parcels (e.g., not “STATE OF WISCONSIN (DEPARTMENT OF NATURAL RESOURCES)”, “WISCONSIN DEPARTMENT OF NATURAL RESOURCES” and “STATE OF WISCONSIN DNR,” which all occur in the county dataset). In other words, standardize owner names for public parcels to the extent possible/permissible by recording document policy.
- ✓ ASSDACRES
- ✓ DEEDACRES
- ✓ GISACRES
- ✓ CONAME – with standardized domains
- ✓ PARCELFIPS – with standardized domains
- ✓ PARCELSRC – with standardized domains
- ✓ —Projection met statewide schema
- ✓ —County parcel fabric was complete (lacked gaps)
- ✓ —Condo modeling met statewide schema

### OTHER LAYERS – PLSS

- ✓ PLSS – PLSS corner data was submitted

### OTHER LAYERS – RML

- ✓ Zoning: County general – with DESCRIPTION/LINK • (Unchanged from previous year, not submitted)
- ✓ Zoning: Shoreland – with DESCRIPTION/LINK • (Unchanged from previous year, not submitted)
- ✓ Zoning: Airport protection – with DESCRIPTION/LINK • (Unchanged from previous year, not submitted)
- ✓ Other Layers – with standardized file names

### SUBMISSION FORM & PACKAGE

- ✓ Provided .ini submission form + data

### MISCELLANEOUS

- The comments provided in this V7 *Observation Report* describe deviations from the statewide schema that require your attention. In order for your county to meet the Searchable Format requirement listed under state statute 59.72(2)(a), you will need to make the corrections noted on this report—as well as the V1-V6 *Observation Reports*—and ensure that the datasets submitted in the future exactly match DOA’s schema specifications.
- Feedback on the annual parcel data submission process is welcome to DOA/SCO at any time.
- Thanks for your work to prepare your submission. You can read user testimonials in the forthcoming V7 *Final Report* and the V6 *Final Report*. There are a lot of happy end-users of the statewide parcel layer who appreciate your efforts to make the county’s data available in a standardized format!



# WI Statewide Parcel Initiative

## Data Submitted

Parcels  
Zoning General  
Shoreland  
Floodplain

PLSS Corners  
Roads  
Addresses  
Hydrography  
ROW

CBAS Submitted twice a year

- Wards
- Supervisor Districts
- Annexations



# Background Information on Parcels and Ownership Data

## Parcel Editing Process

- Currently every 24 hours parcels Ownership is updated and replicated from GCS, Parcels are updated in groups of edits once every week

2023 - 6010 Edits

2022 - 8284 Edits

2021 - 6337 Edits

2020 - 7541 Edits

2019 - 6875 Edits

2018 - 3725 Edits

## GCS Ownership Changes

Currently editing daily (City/County Tax Listers)

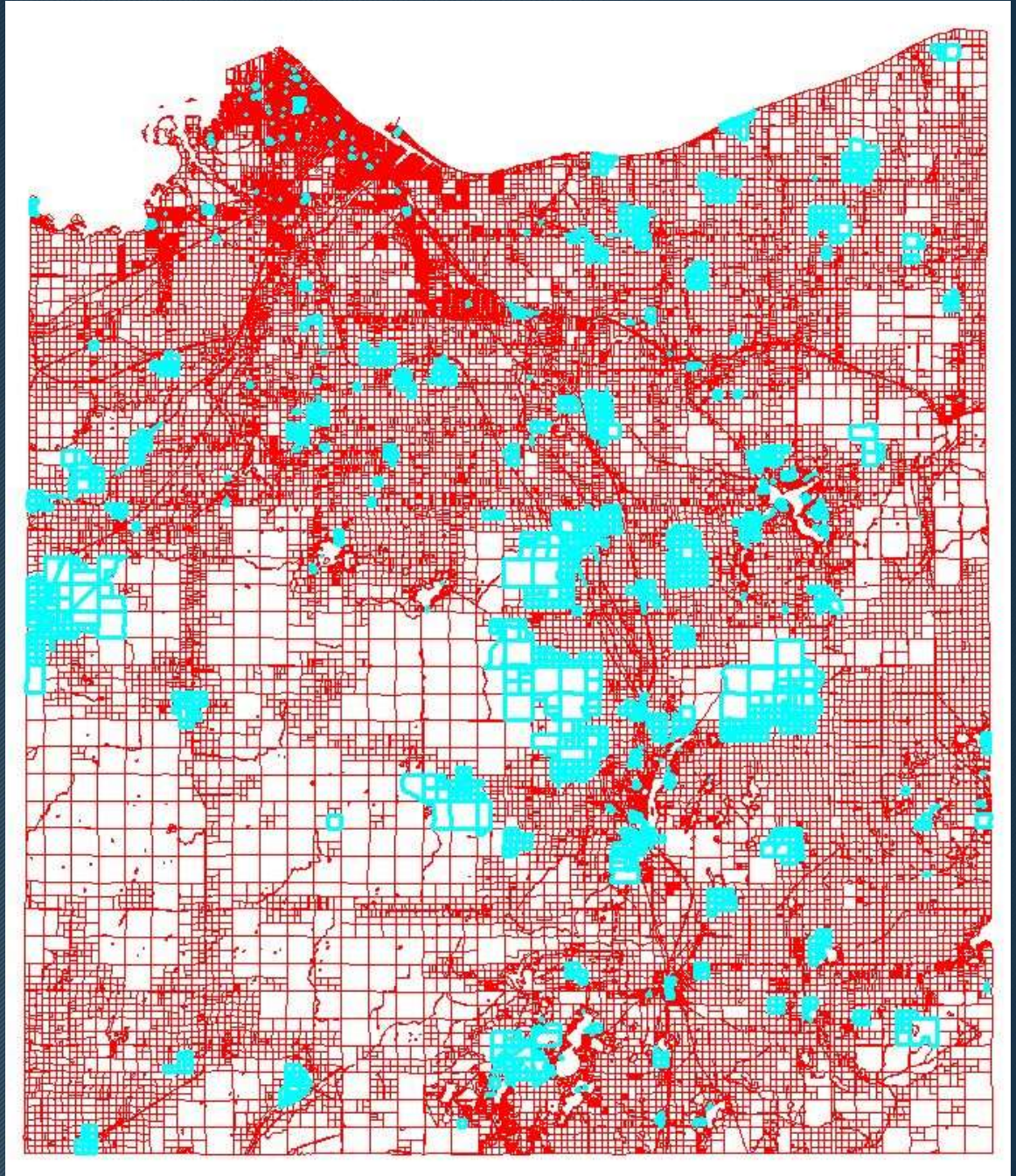
- 2023 - ~ 6919 Edits
- 2022 - ~ 5000 Edits
- 2021 - ~ 6153 Edits
- 2020 - ~ 5896 Edits

GCS ownership data and parcels are the most critical data the City and County Maintain. It is used by all departments for Various purposes.



# Parcels Edited in 2023

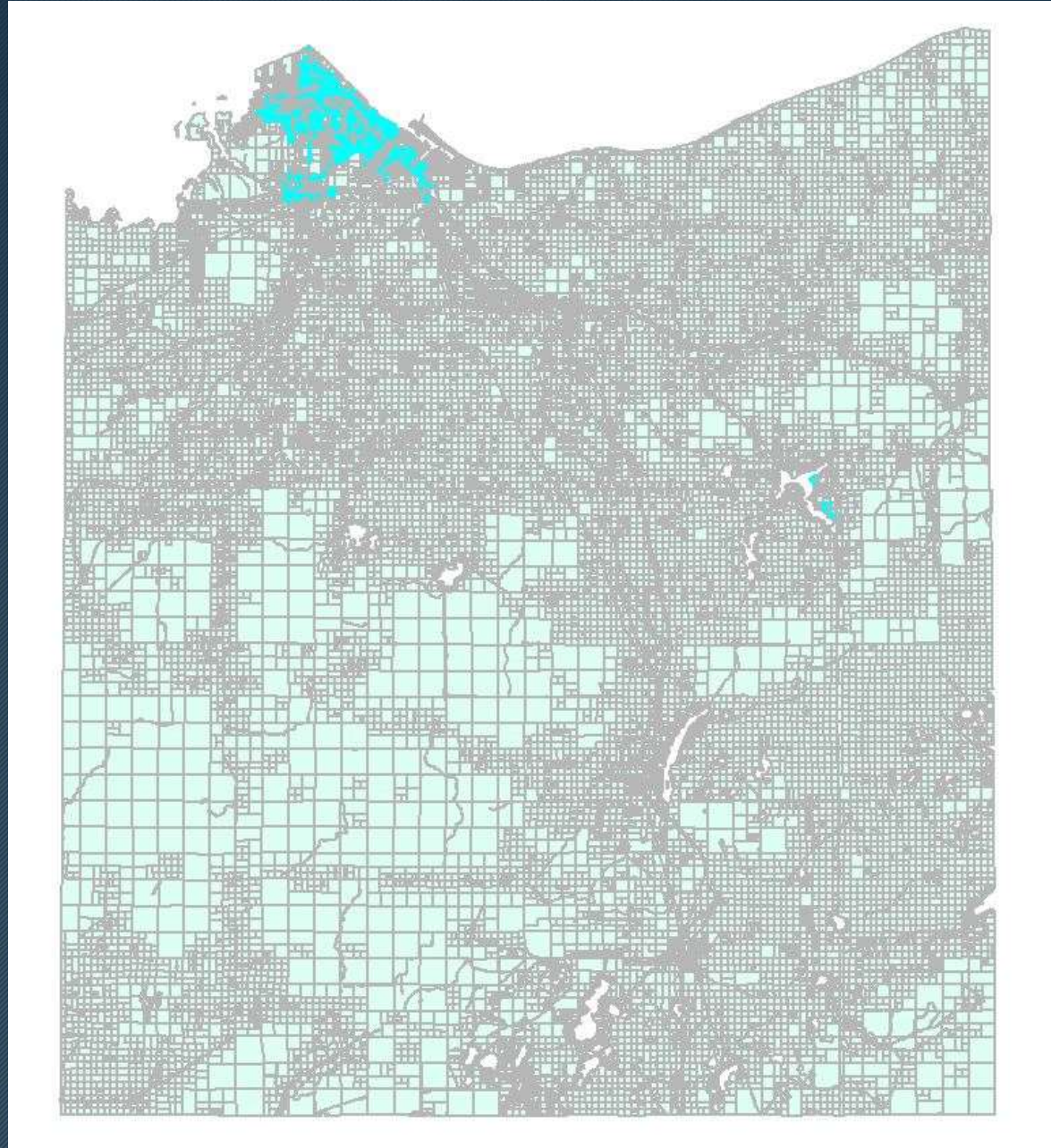
6010 Parcels Edited





# Vacated Streets and Alleys Documented

3126 Vacated Streets & Alleys Documented  
In Fabric 2023





# Vacated Streets and Alleys Documented

2017 = 2678

2018 = 2733

2019 = 2756

2020 = 2765

2021 = 2770

2022 = 2784

2023 = 3126





# Condos in the Fabric - 2022

2016 - 94  
2017 - 105  
2018 - 107  
2019 - 109  
2020 - 109  
2021 - 109  
2022 - 109  
2023 - 108

19 Condo Plat boundaries  
108 Tax Parcels  
180 Associated parcel features  
301 Total Parcel Fabric elements





# V9 Benchmark Status for PLSS Corner Integration

## PLSS Public Land Survey System Monuments

### Layer Status

PLSS Layer Status	Status/Comments
Number of PLSS corners (selection, ¼, meander) <b>set in original government survey</b> that can be remonumented in your Douglas County	• 4393
Number of PLSS corners capable of being remonumented in your county that <b>have been remonumented</b>	2671
Number of remonumented PLSS corners with survey grade coordinates (see below for definition) <ul style="list-style-type: none"> <li><b>SURVEY GRADE</b> – coordinates collected under the direction of a Professional Land Surveyor, in a coordinate system allowed by 236.18(2), and obtained by means, methods and equipment capable of repeatable 2 centimeter or better precision</li> <li><b>SUB-METER</b> – point precision of 1 meter or better</li> <li><b>APPROXIMATE</b> – point precision within 5 meters or coordinates derived from public records or other relevant information</li> </ul>	<ul style="list-style-type: none"> <li>• 2407, (Survey Grade)</li> <li>• 31, (Sub-meter)</li> <li>• 233, (Approximate)</li> </ul>
Number of survey grade PLSS corner coordinates integrated into county digital parcel layer	1185
Number of non-survey grade PLSS corner coordinates integrated into county digital parcel layer	945
Tie sheets available online?	YES <a href="https://douglascowi.wgxtreme.com/">https://douglascowi.wgxtreme.com/</a>
Percentage of remonumented PLSS corners that have <b>tie sheets available online</b> (whether or not they have corresponding coordinate values)	100% (2671)
Percentage of remonumented PLSS corners that have tie sheets available online (whether or not they have corresponding coordinate values) <b>and a corresponding URL path/hyperlink value</b> in the PLSS geodatabase	100% (2671)
PLSS corners believed to be remonumented based on filed tie-sheets or surveys, but do not have coordinate values	• 662
Approximate number of PLSS corners believed to be lost or obliterated	• 1678
Which system(s) for <b>corner point identification/ numbering</b> does the county employ (e.g., the Romportl point numbering system known as Wisconsin Corner Point Identification System, the BLM Point ID Standard, or other corner point ID system)?	Romportl Point Numbering System
Does the county contain any <b>non-PLSS areas</b> (e.g., river frontage long lots, French land claims, private claims, farm lots, French long lots, etc.) or any special situations regarding PLSS data for tribal lands?	• NO
Total number of PLSS corners along each bordering county	Burnett = 30 Washburn= 53 Bayfield= 87 WI/MN State Line= 72
Number of PLSS corners remonumented along each county boundary	Burnett = 30 Washburn= 53 Bayfield= 87 WI/MN State Line= 72
Number of remonumented PLSS corners along each county boundary with survey grade coordinates	Burnett = 30 Washburn= 53 Bayfield= 87 WI/MN State Line= 72
In what ways does your county collaborate with or plan to collaborate with neighboring counties for PLSS updates on shared county borders?	Burnett = 30 (100%) Washburn= 53 (100%) Bayfield= 52 (60%) WI/MN State Line= 25 (34%)  Douglas County has worked with neighboring counties and states on shared PLSS updates and plans to continue to do so in the future



# Survey Documents Inventory

## Douglas County Surveyor Control Summary 2023 (As of 12/4/2023)

Centerline Monuments = 10

Section Corners = 85

Section Corners via the County Bounty System = 30

- Contracted Section Corners = 35
- New Collected Corners = 20

Survey Site , <http://www.superiordcgis.org/surveyors/>  
Updated with new corners and current links to survey docs. Currently being taken down due to software sun setting.

We also added Survey data to the County GIS Online Site at <http://douglascowi.wgxtreme.com/>



# Survey Documents Inventory

## Georeferenced Survey Documents Inventory

6047 Total Documents

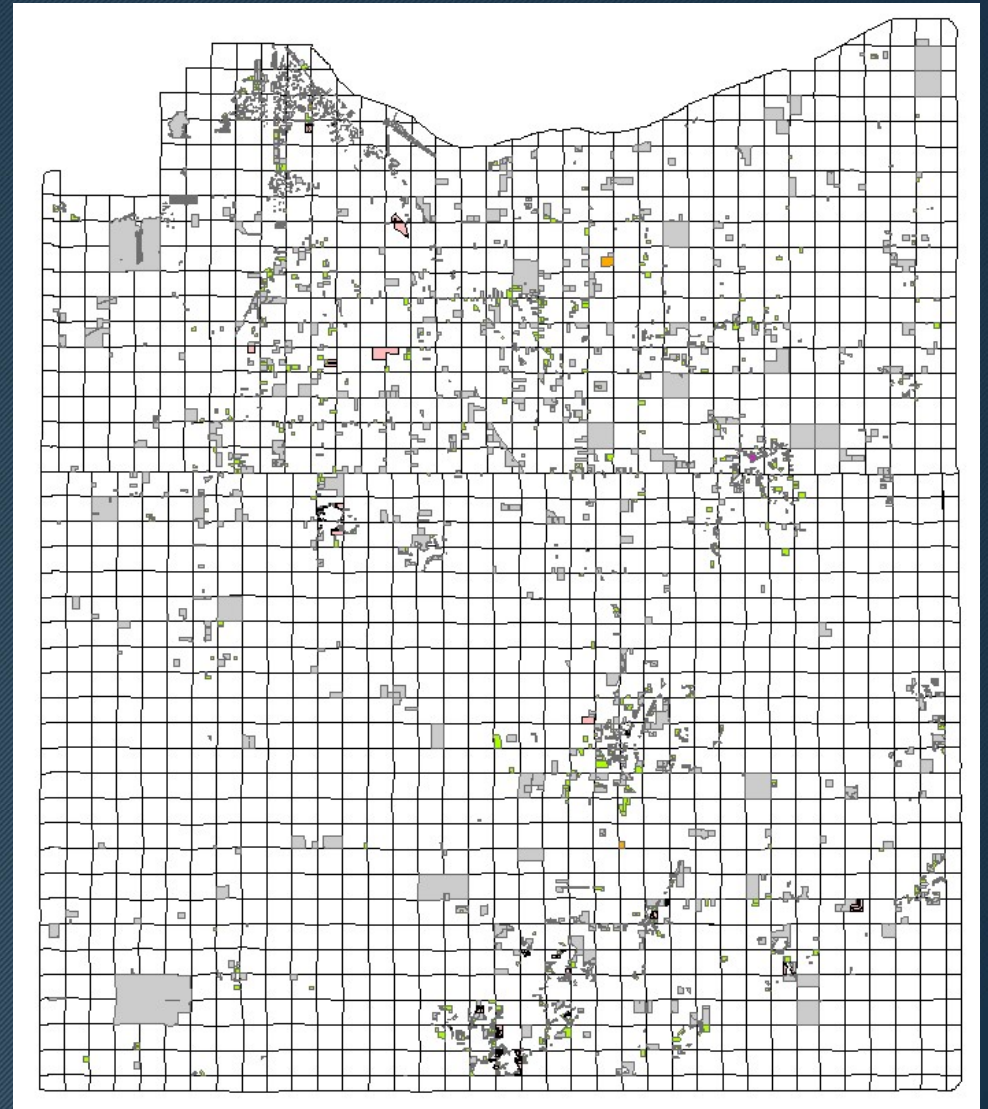
ALTA = 81

Certified Survey Maps = 1614

Site Plans = 211

Maps of Survey = 3468

Plats = 673



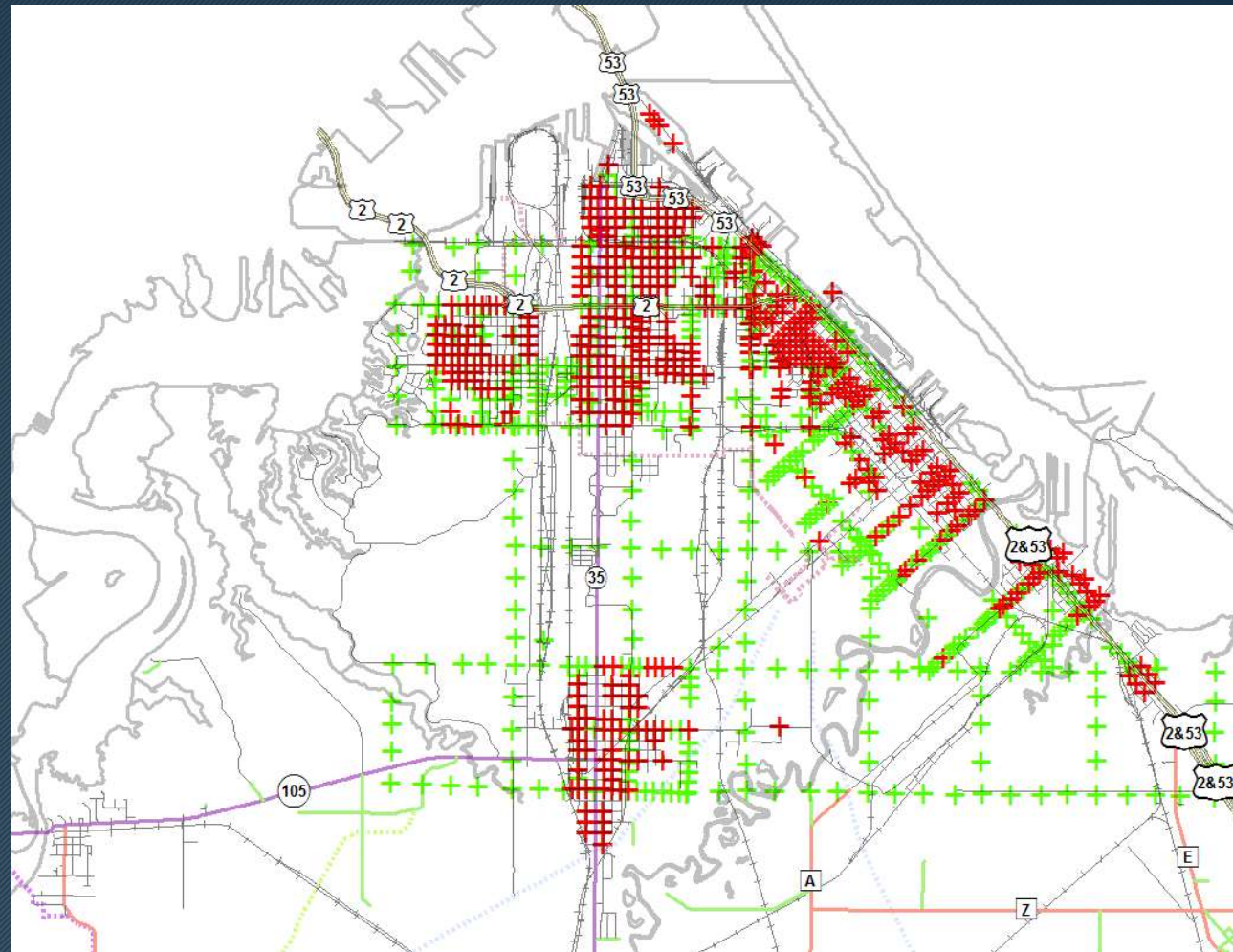


# Street Centerline Monuments

## City of Superior Street Centerline Monuments

Attributed Monuments = 517 (Red)

Unattributed Monuments = 539 (Green)





# City of Superior Street Centerline Monument Record Sample

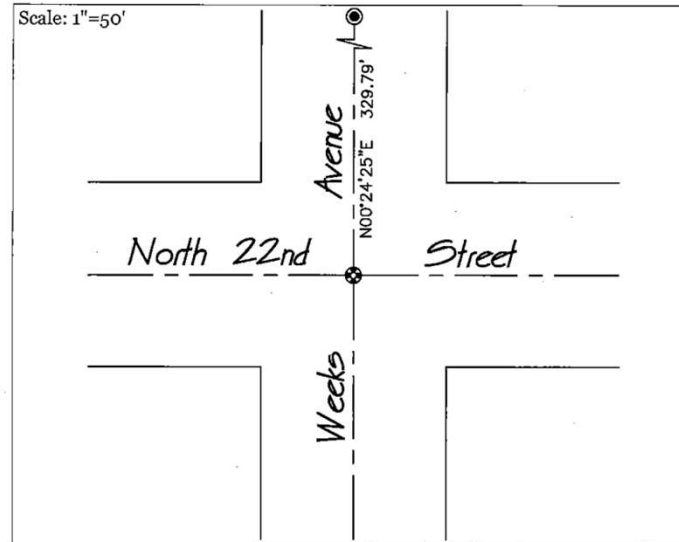
## Street Centerline Monument Record

26 CMPRs

### Centerline Monument Preservation Record

The purpose of this record is to preserve the location of a survey or land corner monument that may be disturbed, destroyed or inaccessible due to construction or other activity.

Section 23, Township 49 North, Range 14 West,  
City of Superior, Douglas County, WI



N:302440.085  
E:150011.798

Douglas County Coord. System:  
VRS (WISCORS), NAD 83  
(2011) adjustment.

Legend:

- Denotes aluminum centerline monument found.
- ⊕ Denotes survey mark nail set.

#### Description and origin of monument found:

City of Superior Monumental Map dated 1892, E. B. Banks:  
Indicates an iron bolt centerline monument at this intersection.

I Found a 1" iron bolt (with a 2" square head) centerline monument in box without lid. The bolt was down 0.6' below bituminous surface.

#### Description of monument reset:

I set a Survey Mark nail at the surface of bituminous road over centerline monument after the Street was re-paved. Original monument should be intact.

GPS observations and conventional traverse methods were used to tie the corner and accessories into the Douglas County Coordinate System.

I, Matthew R. Johnson, PLS Number 3057, certify that the monument location on this record was determined by me and that this Centerline Monument Preservation Record is correct and complete to the best of my knowledge and belief.

Signature

Date

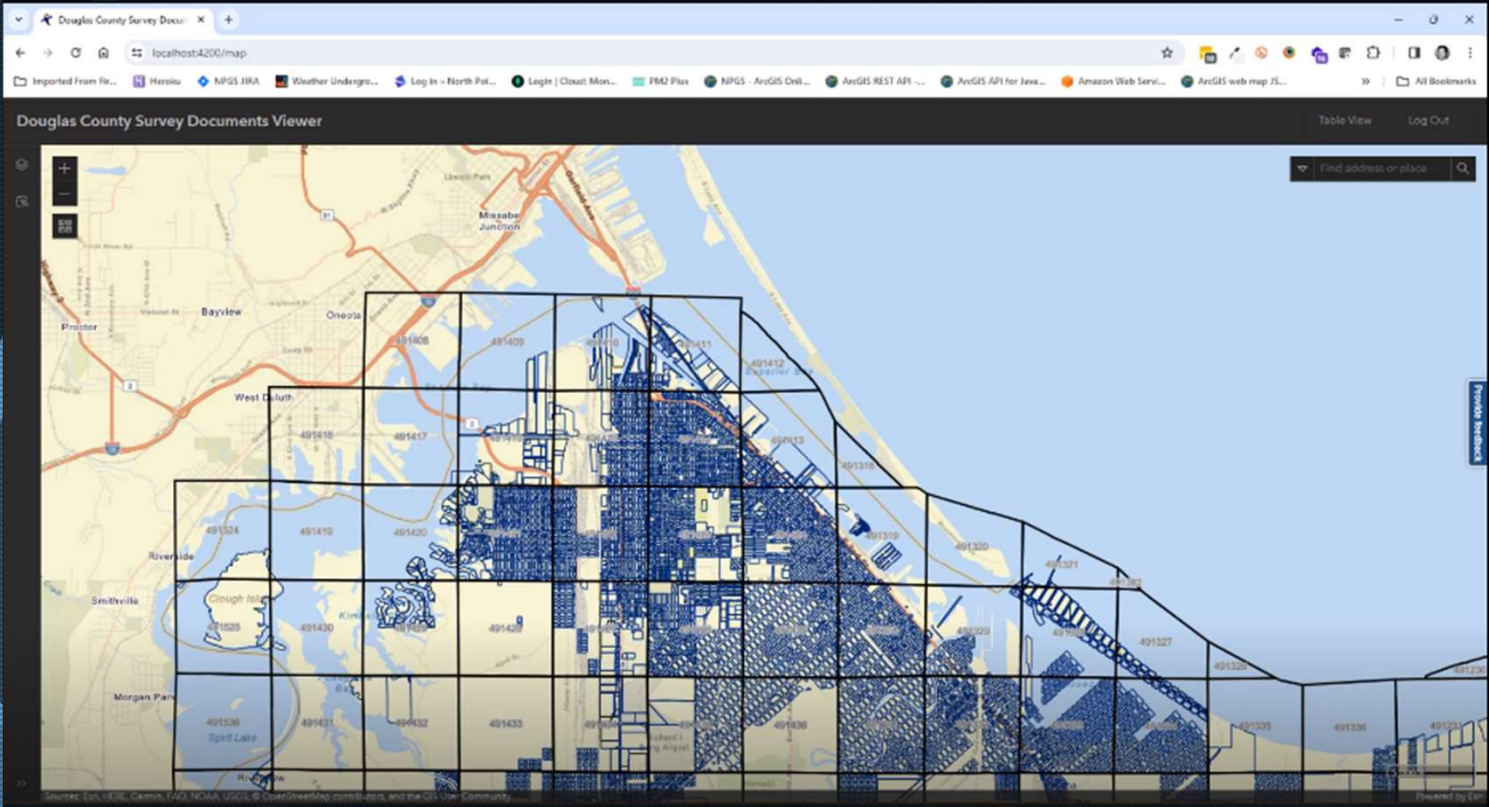
1/16/2018





# North points GEODOCS Survey App/Management System

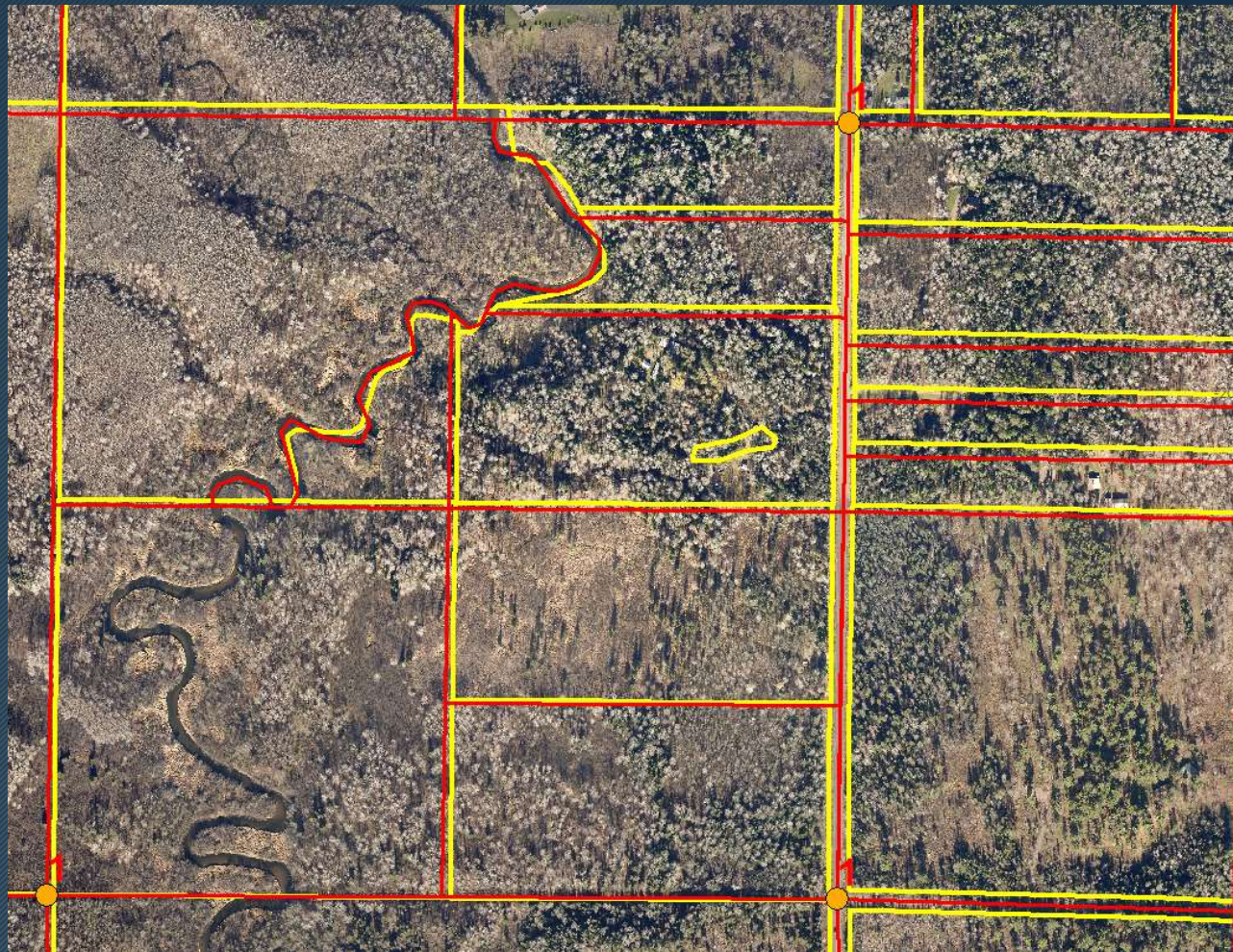
# North points GEODOCS Survey App/Management System





# Brule Area

Brule Area Adjustment to PLSS  
Yellow = Before Adjustment  
Red = After Adjustment





# Minnesuing Lake Adjustment

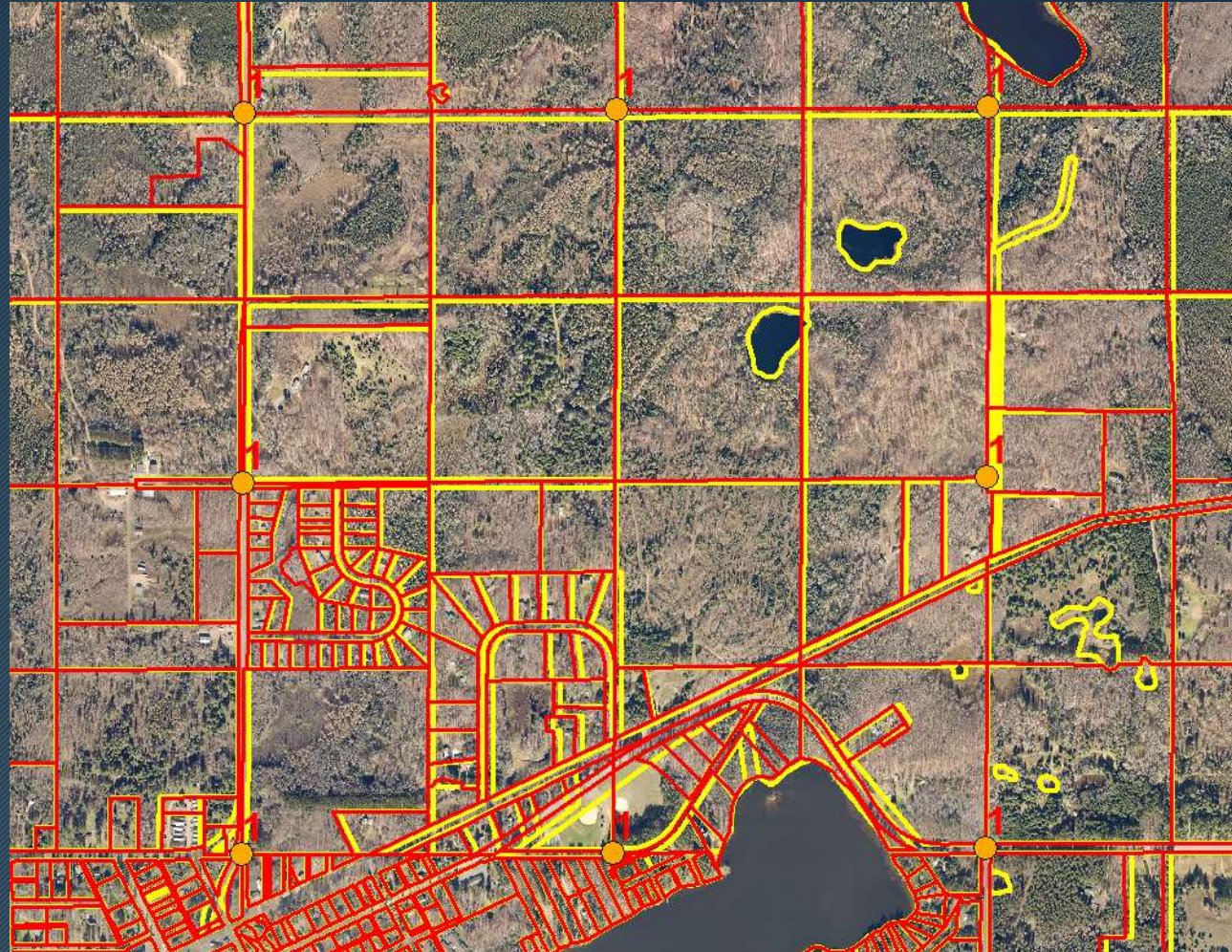
Yellow = Before Adjustment  
Red = After





# 471125 Adjustment

Yellow = Before Adjustment  
Red = After





# Wisconsin Point Adjustment

Yellow = Before Adjustment  
Red = After Adjustment







# Land Information Office's NextGen911 Activities in 2023

NextGen911 (NG911) is a Federally required upgrade to the CAD/911 systems throughout the nation. Wisconsin is developing standards and requirements for County systems to meet. NG911 is a fully GIS integrated system with stringent requirements that must be met.

Douglas County NG911 Activities include:

- CAD911/GIS data assessment in 2020
- Budgeting for GIS staff assistance
- Continued monitoring of the State's NG911 recommendations and needed response
- Implementation of GIS data changes as required by the State and Federal governments

Challenges for LIO in NG911

- Address system used by Douglas County
- Migration of current data to required schema
- Future maintenance needs and costs





# City Poll Site Lookup

<https://portal.superiordcgis.org/portal/apps/webappviewer/index.html?id=b2eeeb1a43124ffbb0e0db2ad2a3f65b>

Views = 2800

# City Polling Locations Lookup





# Geospatial Data Downloads

The City/County LIO currently has nearly all it's GIS data available for download (free)it's been in place since 2010

<http://www.ci.superior.wi.us/474/Geospatial-Data-GIS>

Home » Departments » Geographic Information System (GIS) » Geospatial Data (GIS)

## Geospatial Data (GIS)

### About Geospatial Data

The City of Superior/Douglas County prepares and uses this data for its own purposes. This data displays general boundaries and may not be appropriate for site specific uses. The City/County uses data believed to be accurate; however, a degree of error is inherent in all maps. This data is distributed "AS-IS" without warranties of any kind, either expressed or implied including, but not limited to, warranties of suitability to a particular purpose or use. Detailed on-the-ground surveys and historical analysis of sites may differ substantially from this data. The user of the provided information may find it desirable and beneficial to consult other sources and engage professionals to analyze, and provide advice relating to, the information made available by the City/County and other data sources.

You may download the [ESRI ArcExplorer](#) free of charge.

Douglas County Coordinate System Explanation and Projection [Download](#)

Web Services/Apps

[Enterprise GIS Portal](#)

[Enterprise Images Portal](#)

[ArcMap Image Service Layers](#)

**Elevation**

**Imagery**

**Other Geospatial Data Areas**

**Transportation & Addressing**

**2013 County Orthos High Resolution**

**2016 County Orthos High Resolution**

**2019 County Orthos High Resolution**

**Color Infrared Orthos**

**2016 Douglas County LIDAR LAS Points (RAW DATA) Only**

**2016 Douglas County LIDAR Contours by Township**

**2019 City of Superior LIDAR Data**



# City/County Aerial Photos

## City/County Aerial Photos

2023 City Only

2022

2019

2016

2013

2009

2006

1999

1986

1973

1962

1948

1938



# Land Information Office's Mobile /online Presence

## City/County Portal Servers in 2020-2023

- City/County COSDC Enterprise Server
  - <https://portal.superiordcgis.org/portal>



Currently working on an permissions and training  
for 2023



# City/County Map Services

<https://portal.superiordcgis.org/portal/apps/webappviewer/index.html?id=cccdec273dc342828351bc3bca1e49ee>

Land Information  
Office's Mobile  
/online Presence





Land Information  
Office's Mobile  
/online Presence

# City/County Portals

Total of Items

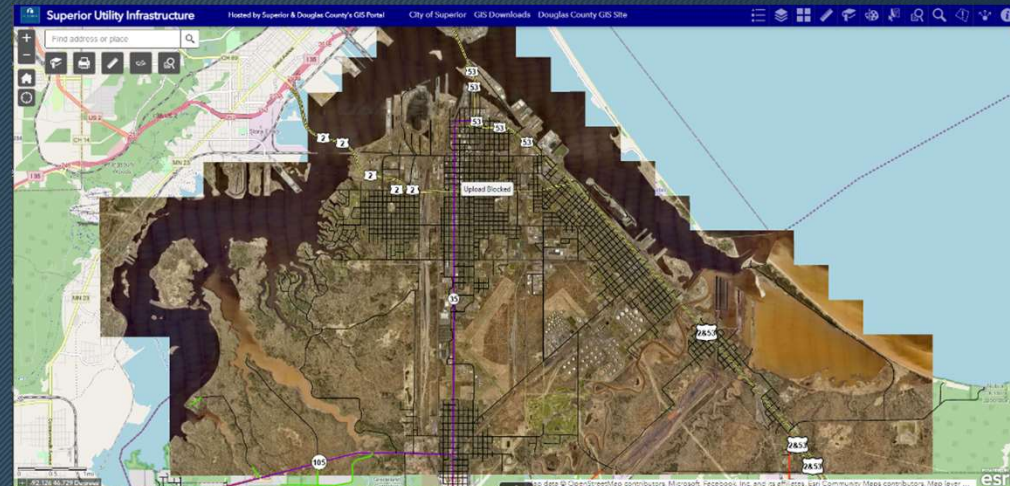
Servers = 4

Apps = 121

Dashboard = 30

Map Services = 442

Image Services = 89

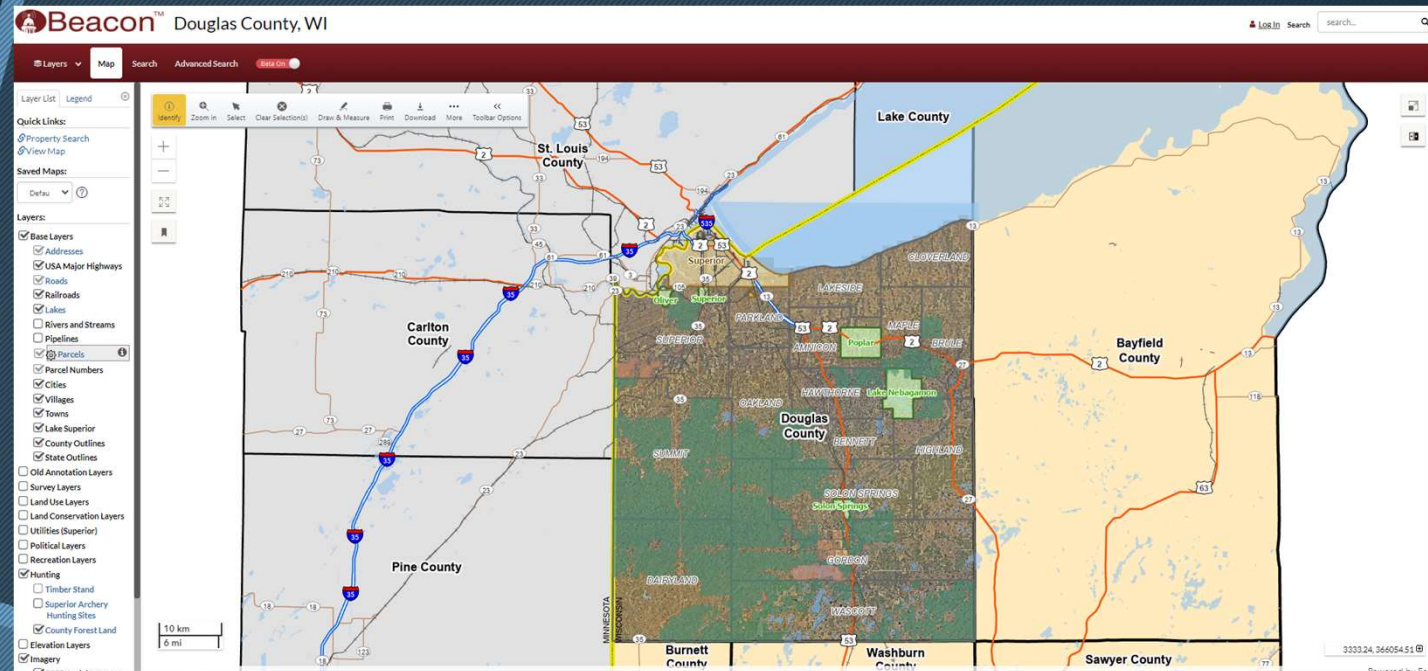




# City/County Beacon GIS Site

## Douglas County BeaconGIS (Schneider GIS) Online Site

<https://beacon.schneidercorp.com/Application.aspx?App=DouglasCountyWI&PageType=Map>





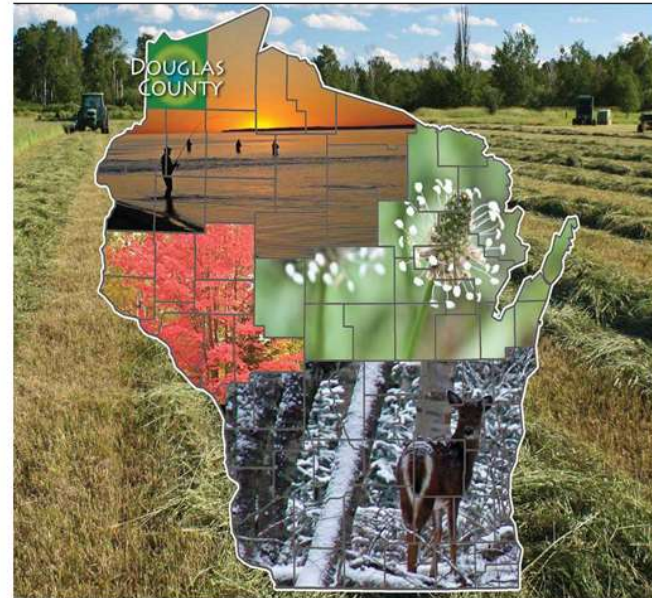
# Land Information Plan

# Douglas County Land Information Plan 2022-2024

Submitted 12/31/2021

## Douglas County

LAND RECORDS MODERNIZATION PLAN  
2022 - 2024



Version Date 12/10/2021  
Approved/Adopted by Land Information Council on: 12/20/2021

\*\*Wisconsin Land Information Program  
Wisconsin Department of Administration  
101 East Wilson Street, 9th Floor  
Madison, WI 53703  
(608) 267-3369  
[www.doa.wi.gov/WLIP](http://www.doa.wi.gov/WLIP)



# Land Information 2023 Projects

## Douglas County Land Information 2023 Projects

- 4 GIS Server Upgrades
- 1 GCS Server Upgrades
- ADC to Schneider GIS site Migration
- 150 Users upgraded to ArcMap 10.8+
- 2023 Superior Aerial Photo Acquisition
- ArcMap Training for Users
- NG911 Compliance
- Departmental Mobile Apps; EMS, LIO, Assessor, Public Works, ESD



# Land Information Upcoming Projects

## Douglas County Land Information Upcoming Projects

- Parcel Fabric Server Migration to New Data Model
- CAD/911 GIS Server Upgrade
- Survey Docs App and Maintenance System
- NG911 Federal and State Requirements
- WLIA Land Information Plan Renewal



# Discussion?

