

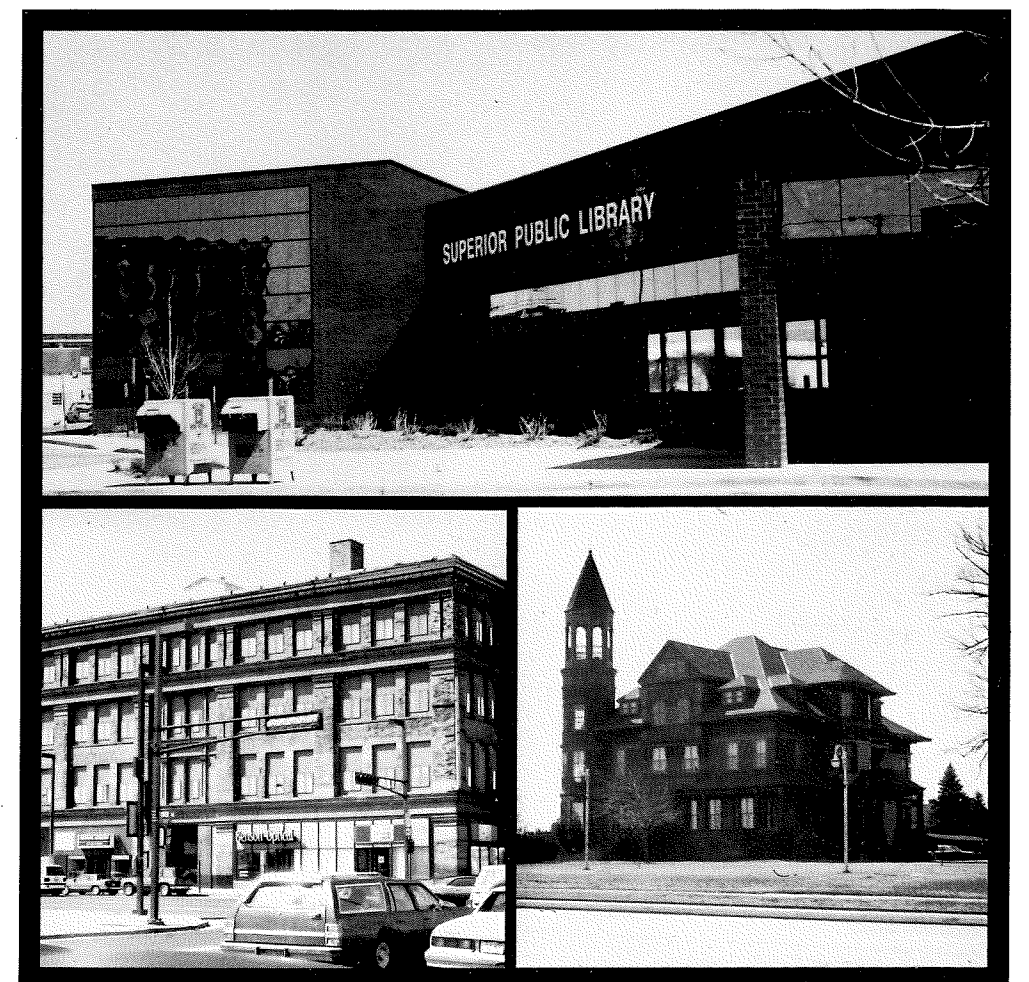
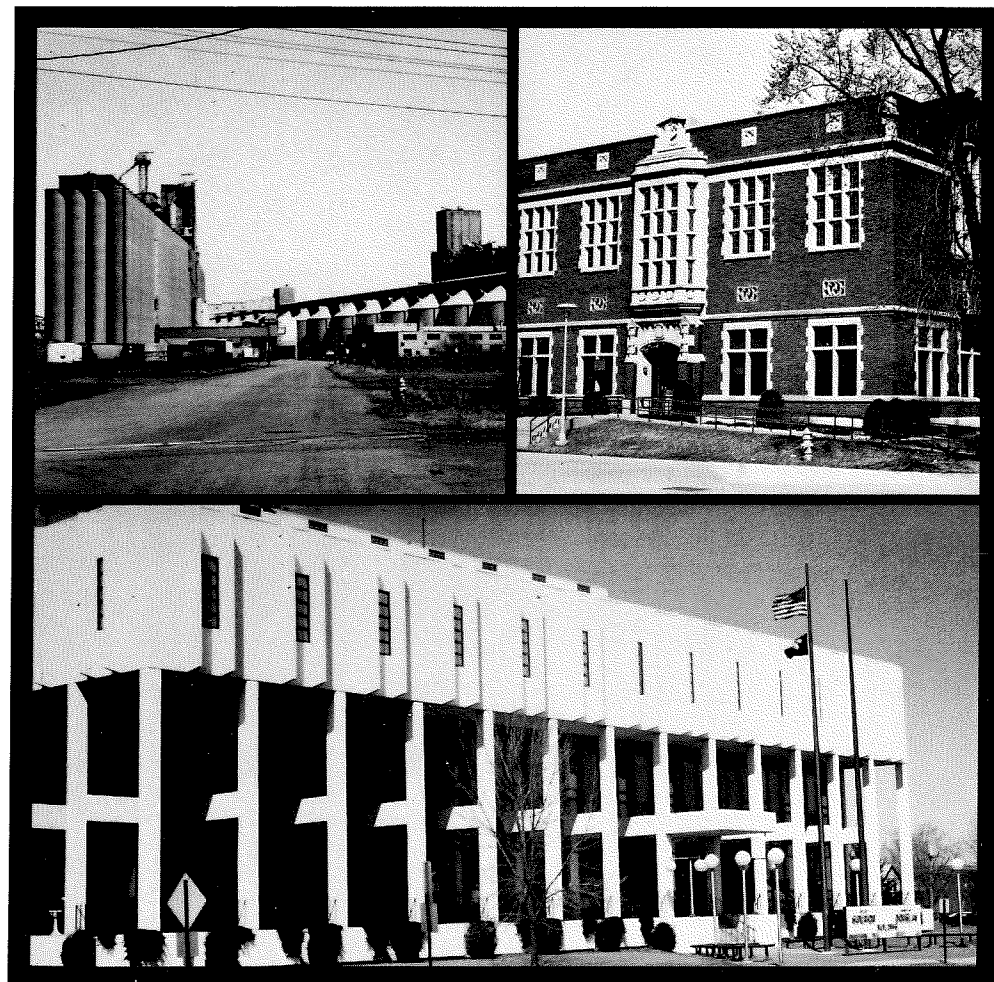


1993

ATLAS

and

PLAT BOOK

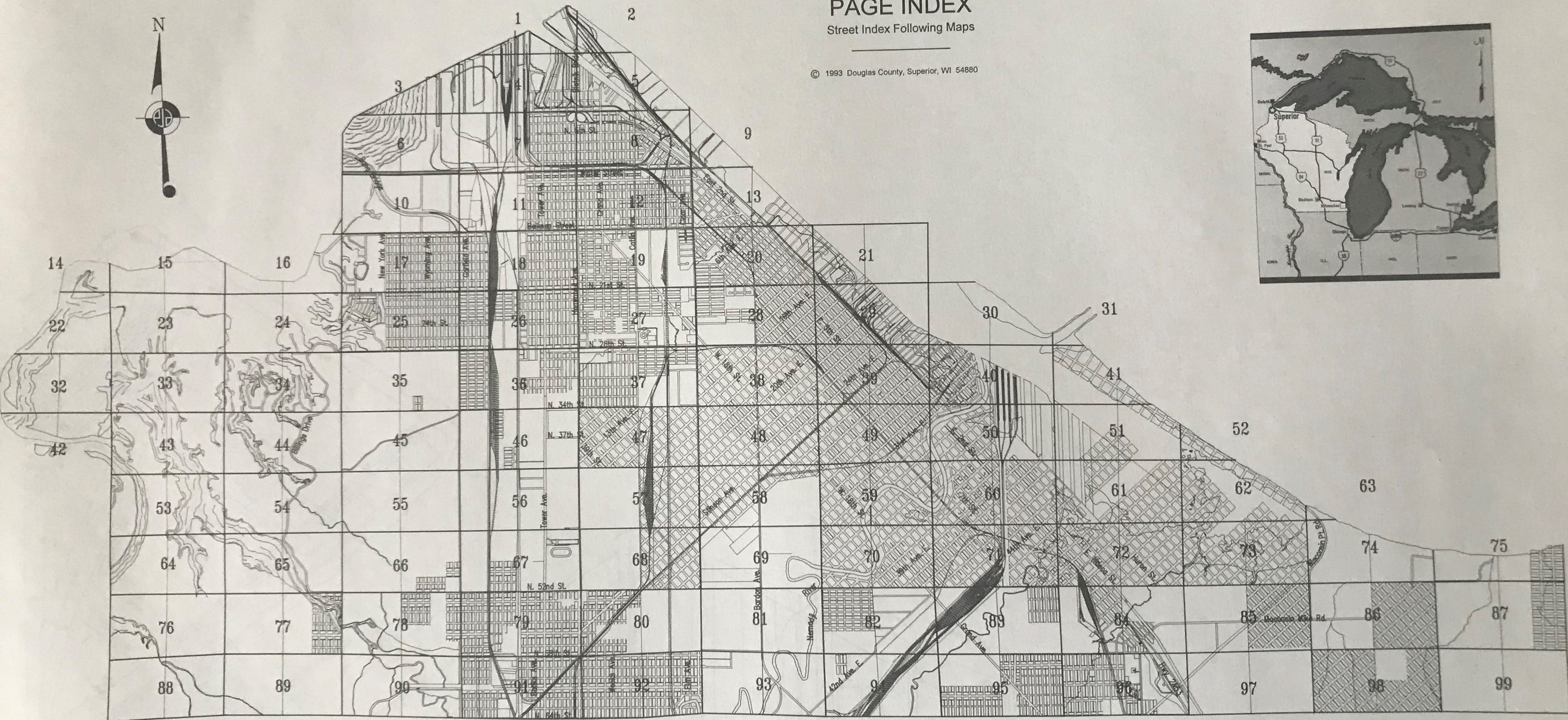
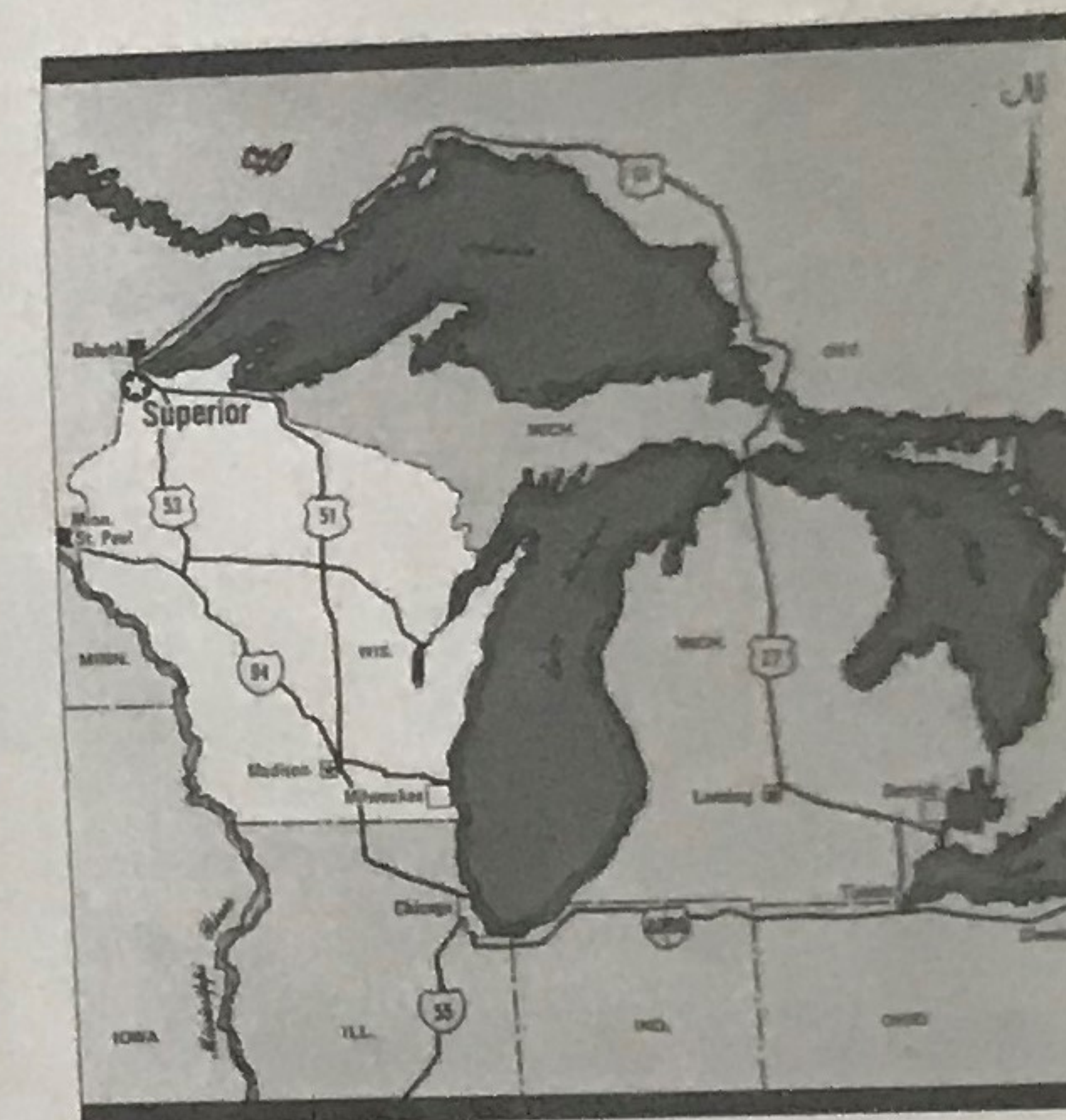


City Plat Books available at  
County Clerk's Office, Courthouse  
Superior, WI 54880  
(715) 394-0483

# CITY OF SUPERIOR PAGE INDEX

Street Index Following Maps

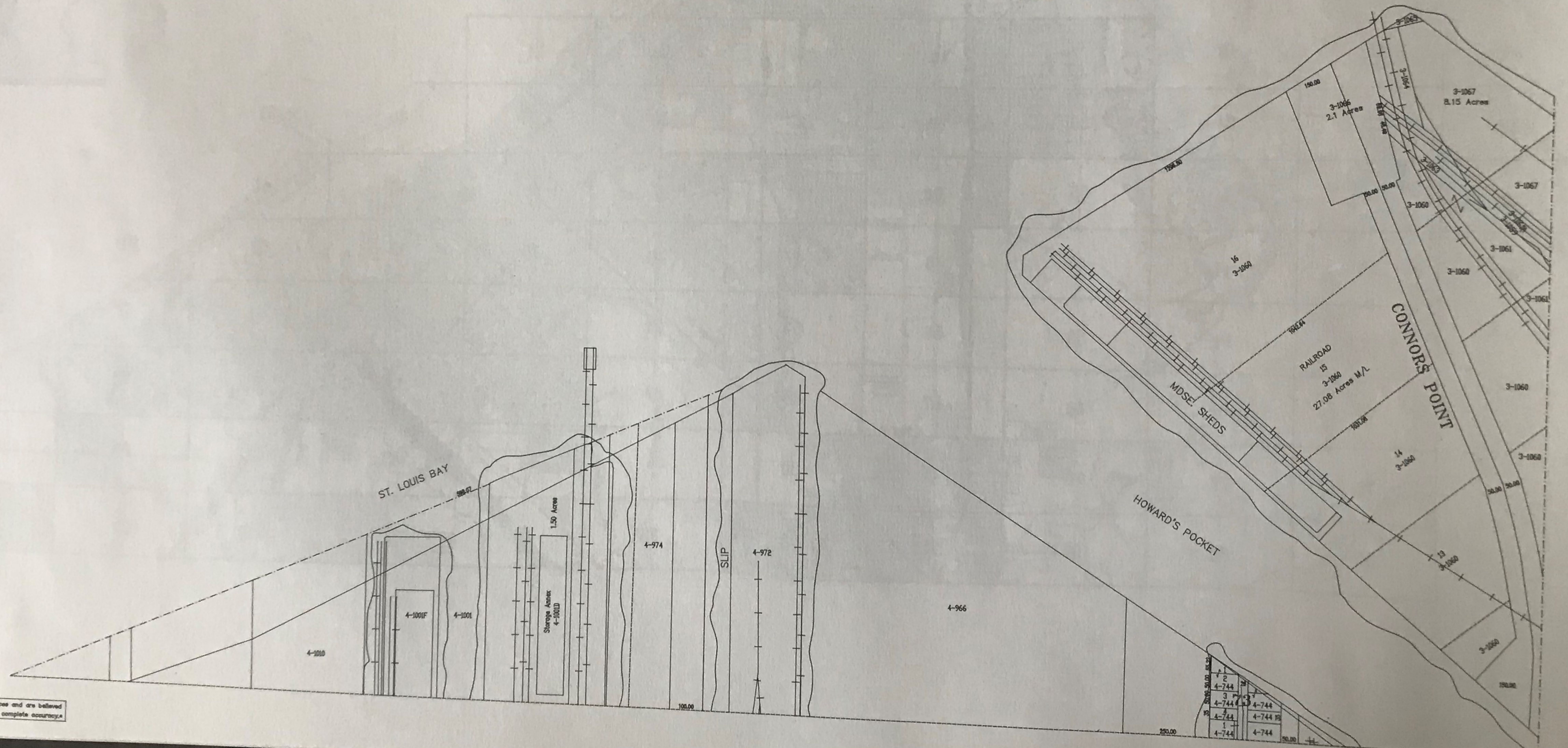
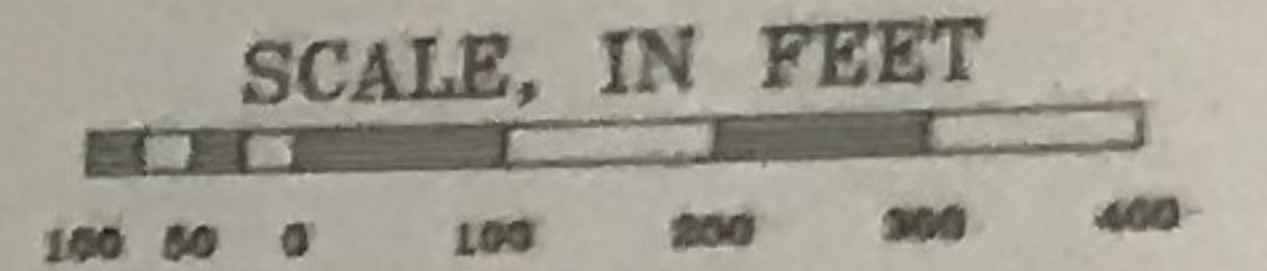
© 1993 Douglas County, Superior, WI 54880



# NORTH 1/2 SEC. 10-49-14



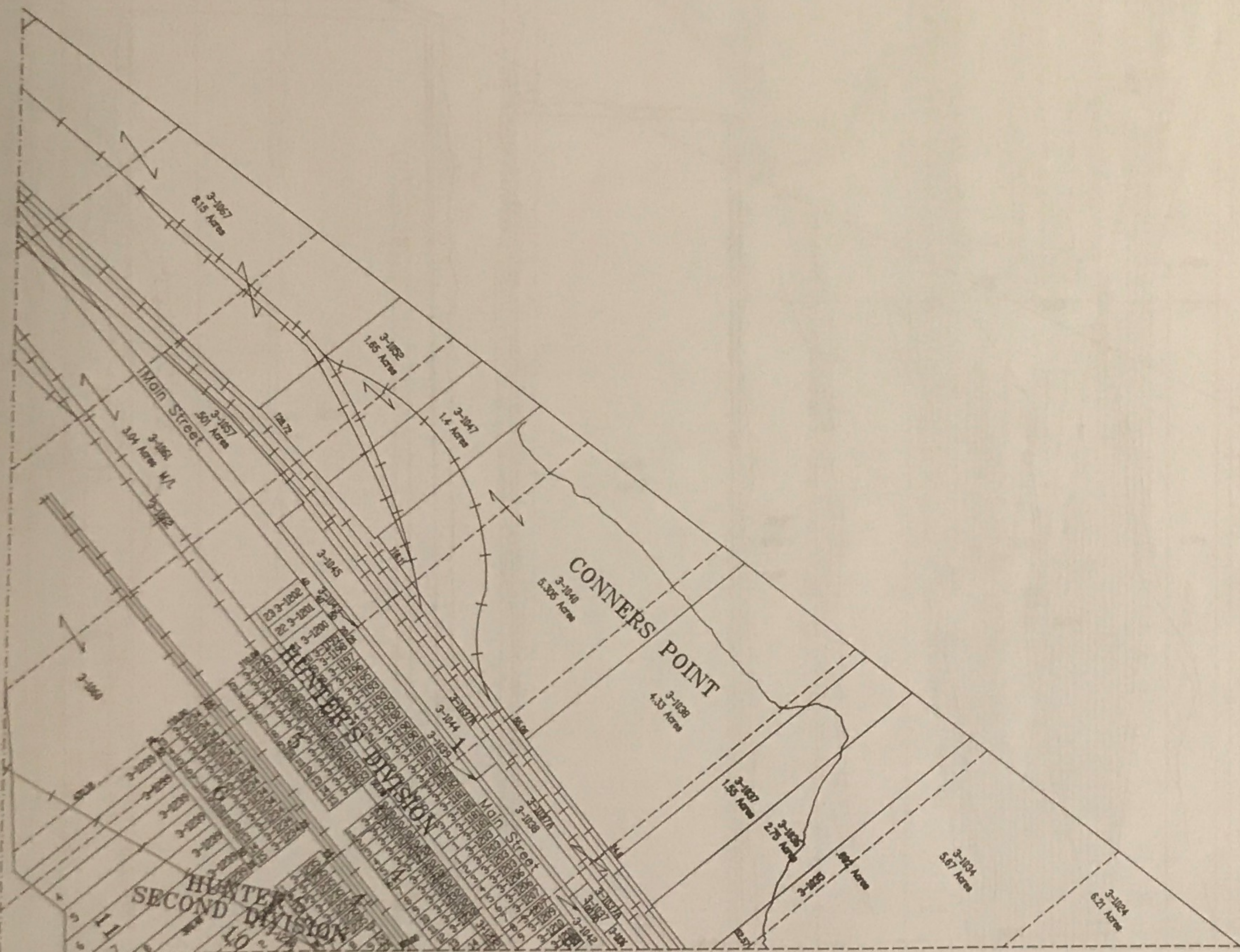
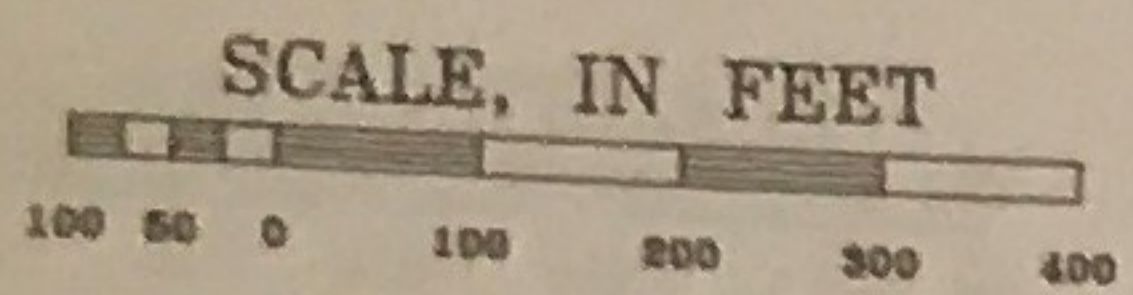
Prepared By:  
Douglas County Clerk's Office, P.J. De Luca  
21 November 1991



The contents of this map have been compiled from many sources and are believed to be substantially accurate. No representation is made as to complete accuracy.

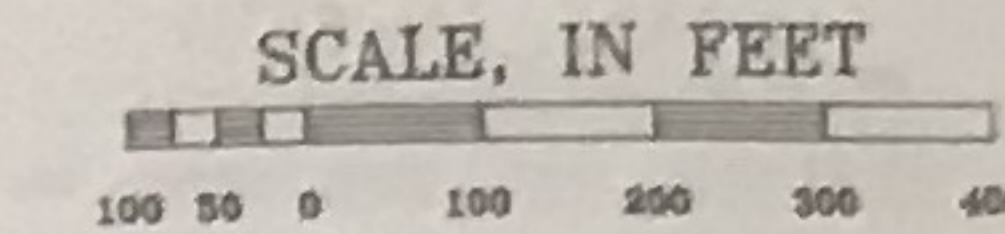
# NORTH 1/2 SEC. 11-49-14

Prepared By:  
Douglas County Clerk's Office, R.W. Earhart  
6 December 1991



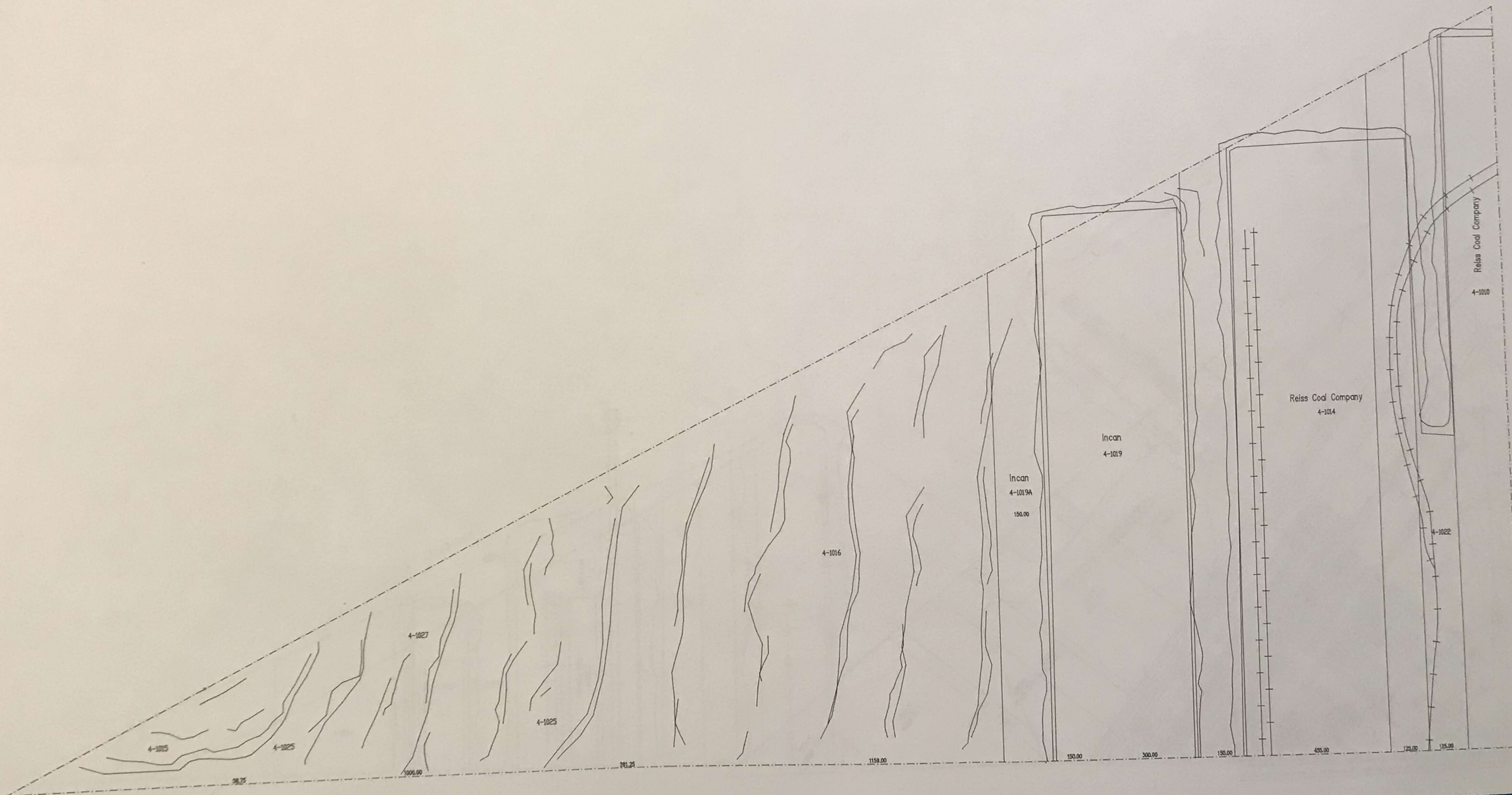
\*The contents of this map has been compiled from many sources and are believed to be substantially accurate. No representation is made as to complete accuracy.\*

# Northerly Extension of NORTH 1/2 SEC. 16-49-14



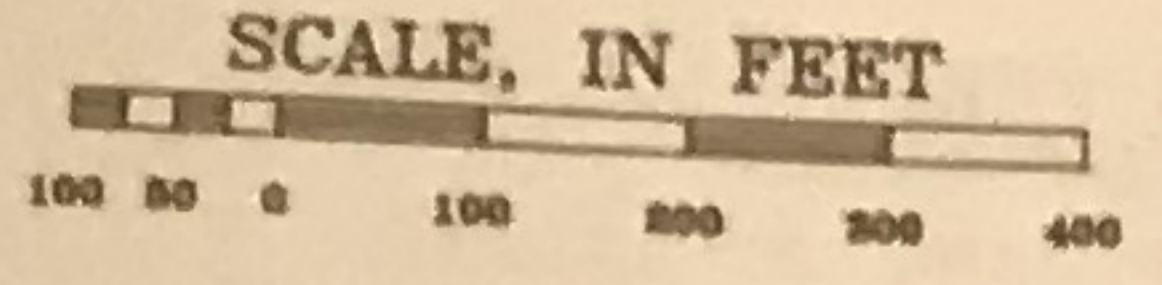
3

Prepared By:  
Douglas County Clerk's Office, P.J. De Luca  
4 May 1992

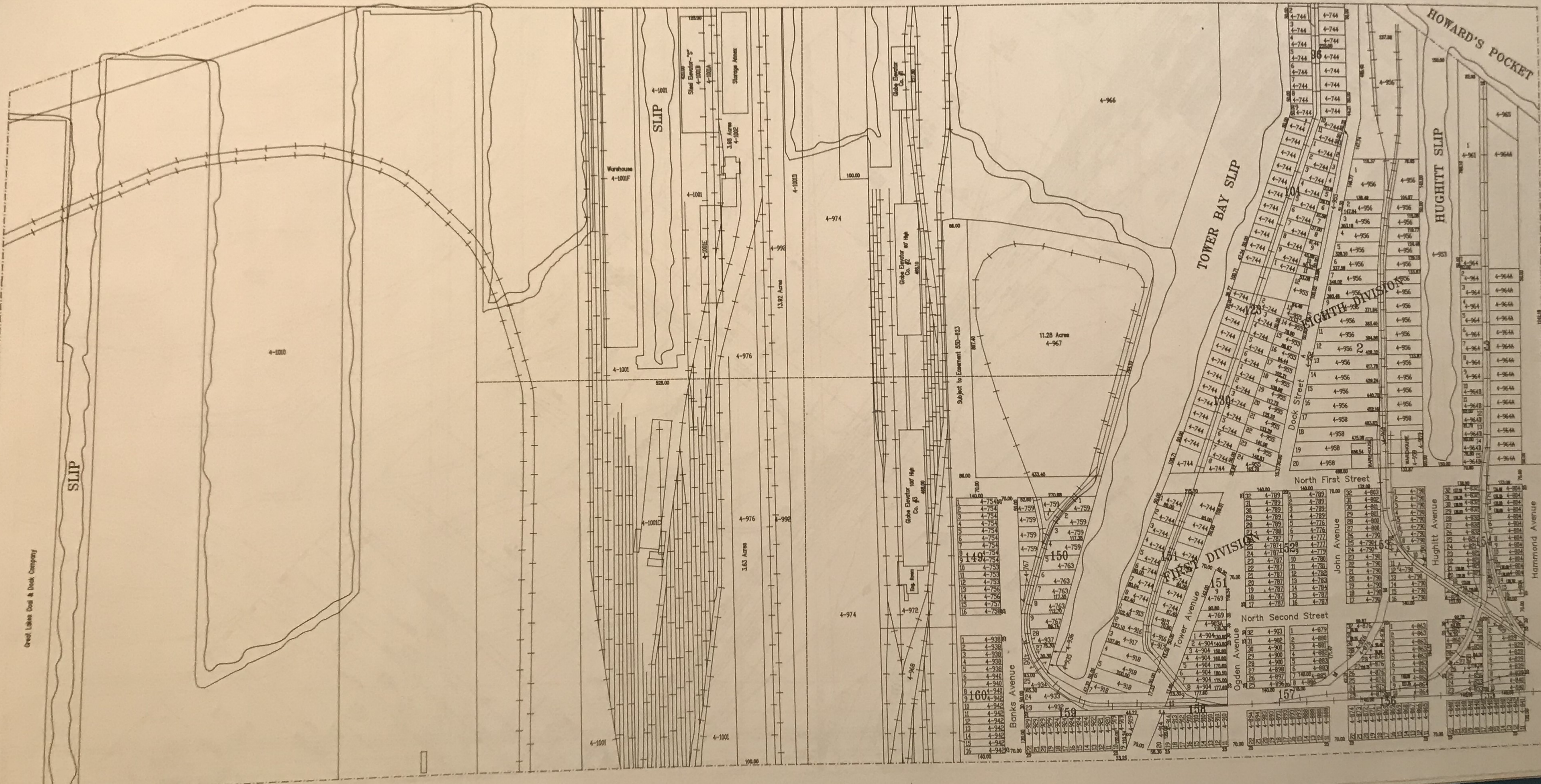


\*The contents of this map has been compiled from many sources and are believed to be substantially accurate. No representation is made as to complete accuracy.\*

# SOUTH 1/2 SEC. 10-49-14



Prepared By:  
Douglas County Clerk's Office, P.J. De Luca  
20 November 1991

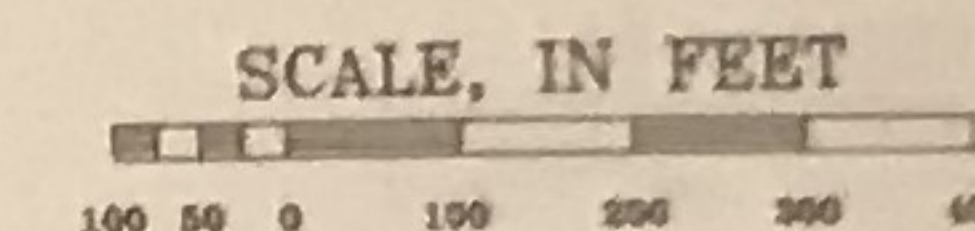


Ortel Lakes Deal & Dock Company

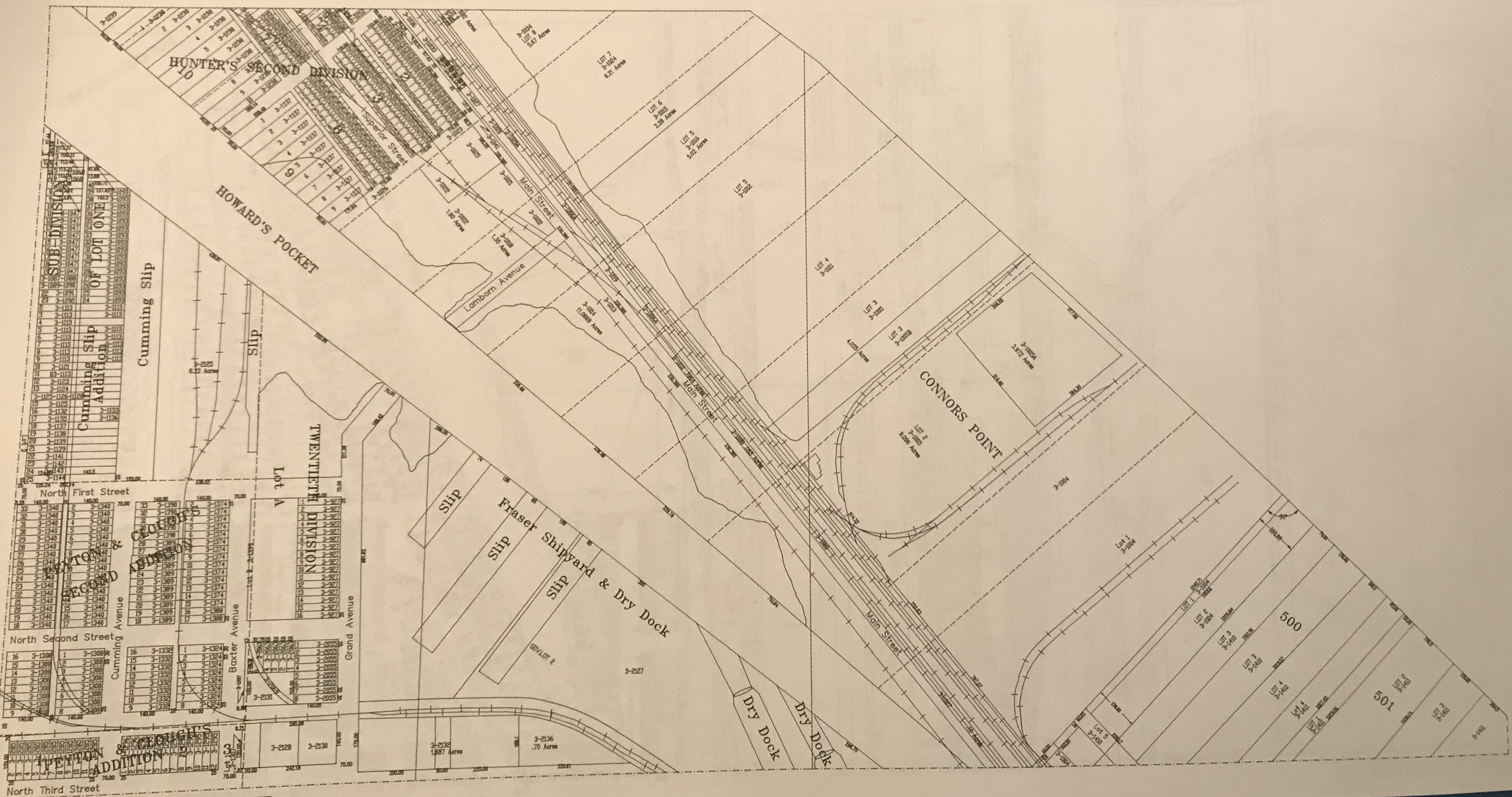
\*The contents of this map has been compiled from many sources and are believed to be substantially accurate. No representation is made as to complete accuracy.\*



# SOUTH 1/2 SEC. 11-49-14



Prepared By:  
Douglas County Clerk's Office, R.W. Earhart  
22 October 1991



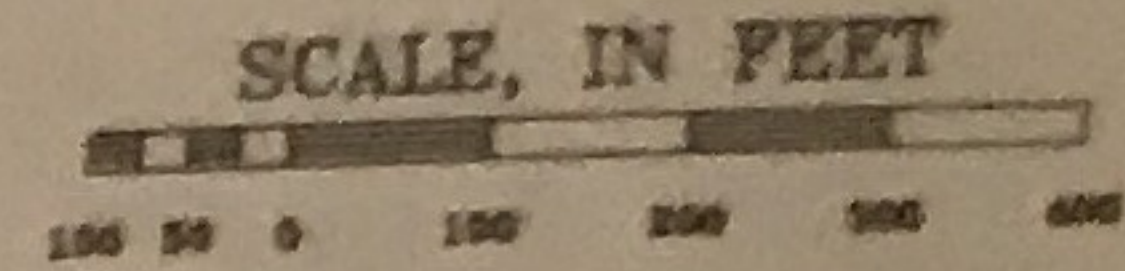
\*The contents of this map has been compiled from many sources and are believed to be substantially accurate. No representation is made as to complete accuracy.\*



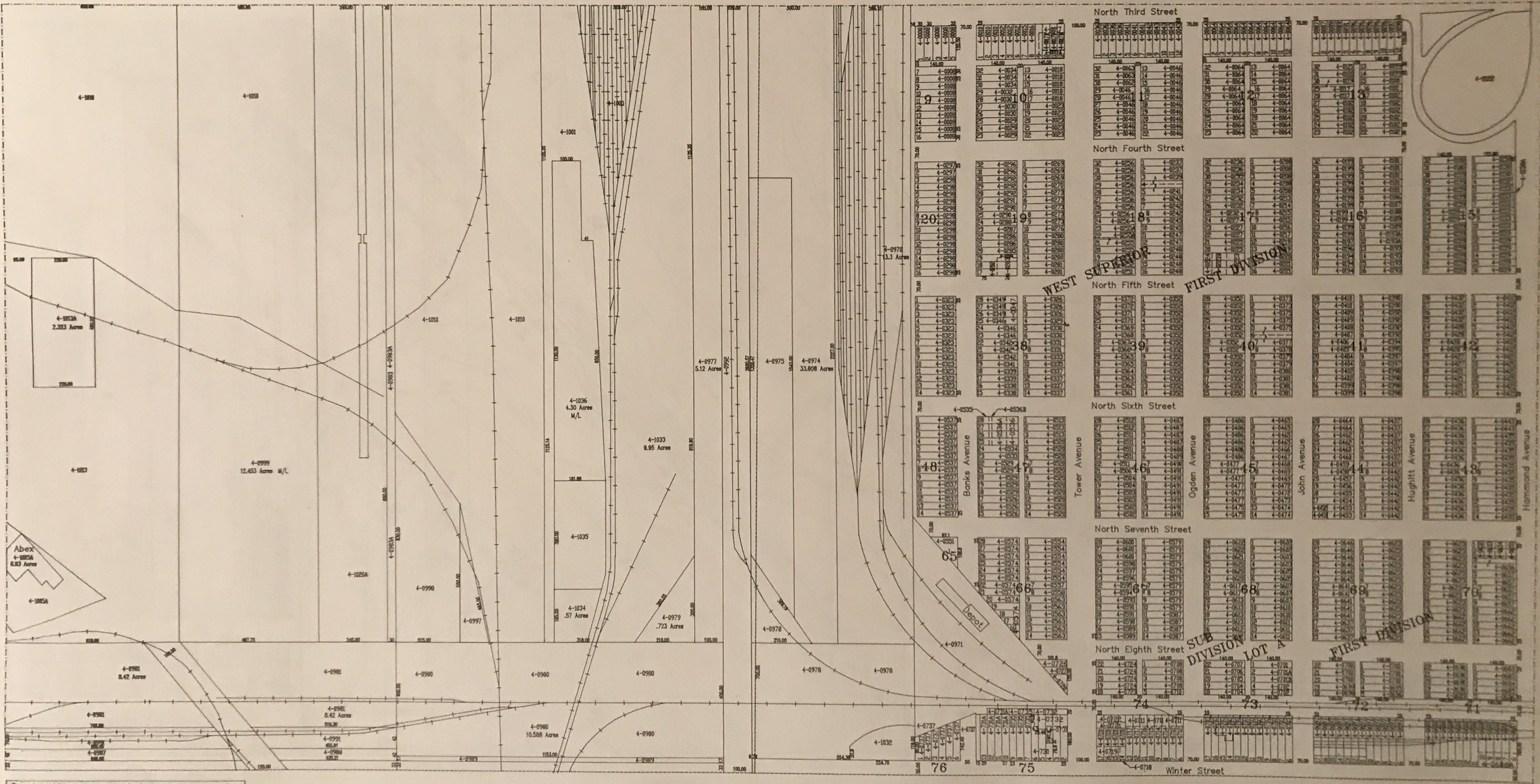




# NORTH 1/2 SEC. 15-49-14

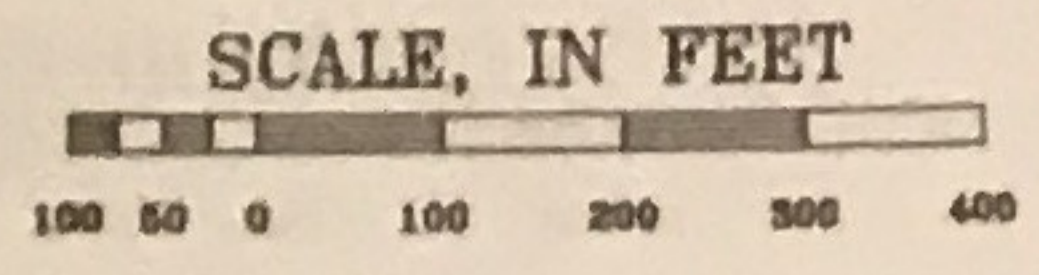


Prepared By:  
Douglas County Clerk's Office, R.W. Earhart  
14 October 1991

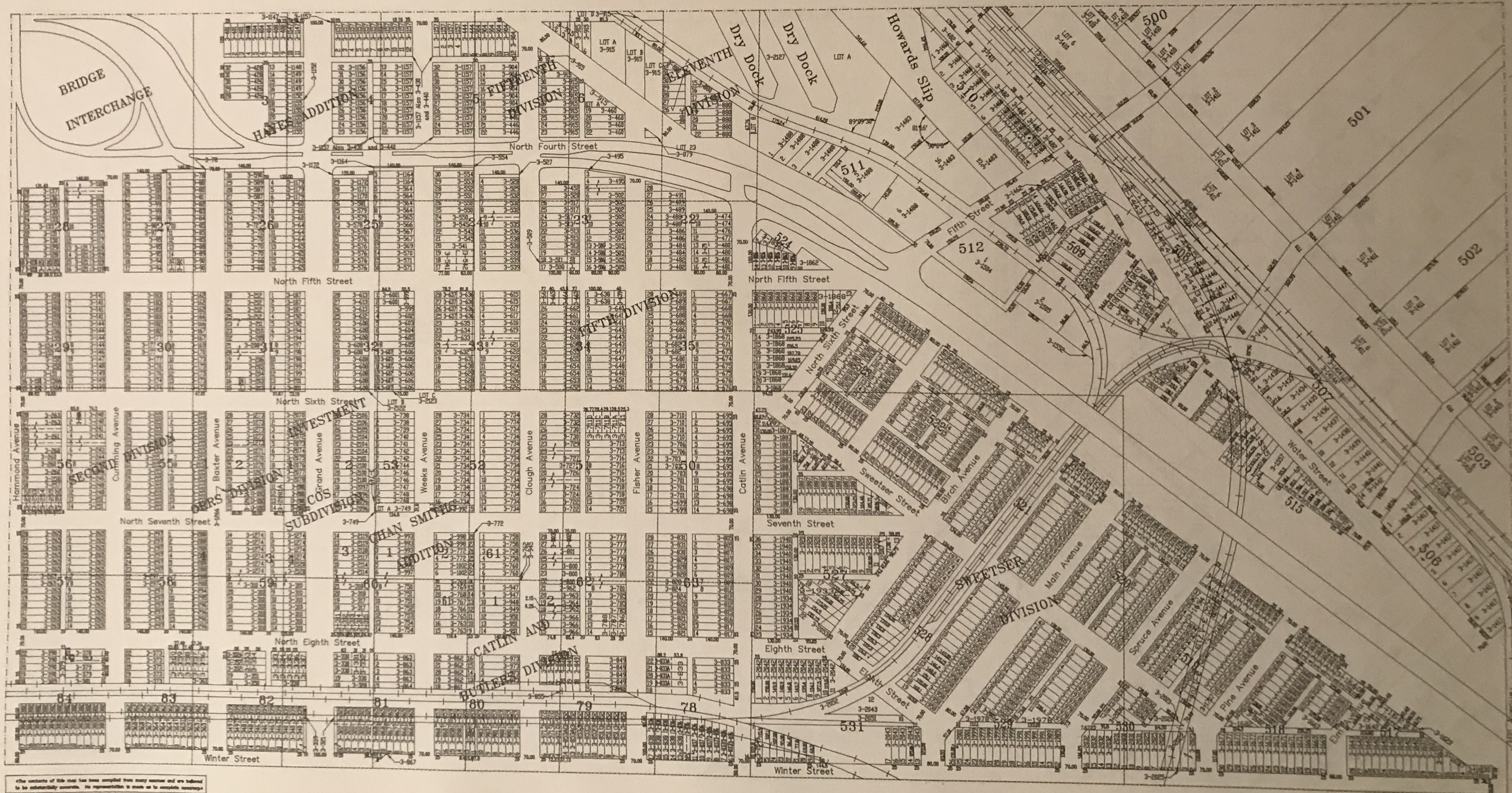
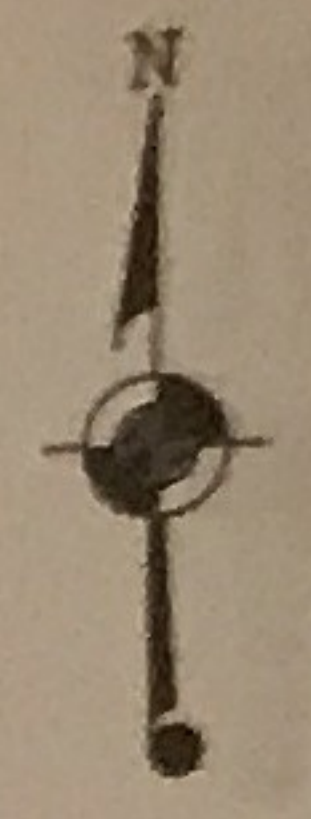


\*The contents of this map have been compiled from many sources and are believed to be substantially accurate. No representation is made as to complete accuracy.\*

# NORTH 1/2 SEC. 14-48-14



Prepared By:  
Douglas County Clerks Office, R.W. Earhart  
17 October 1991



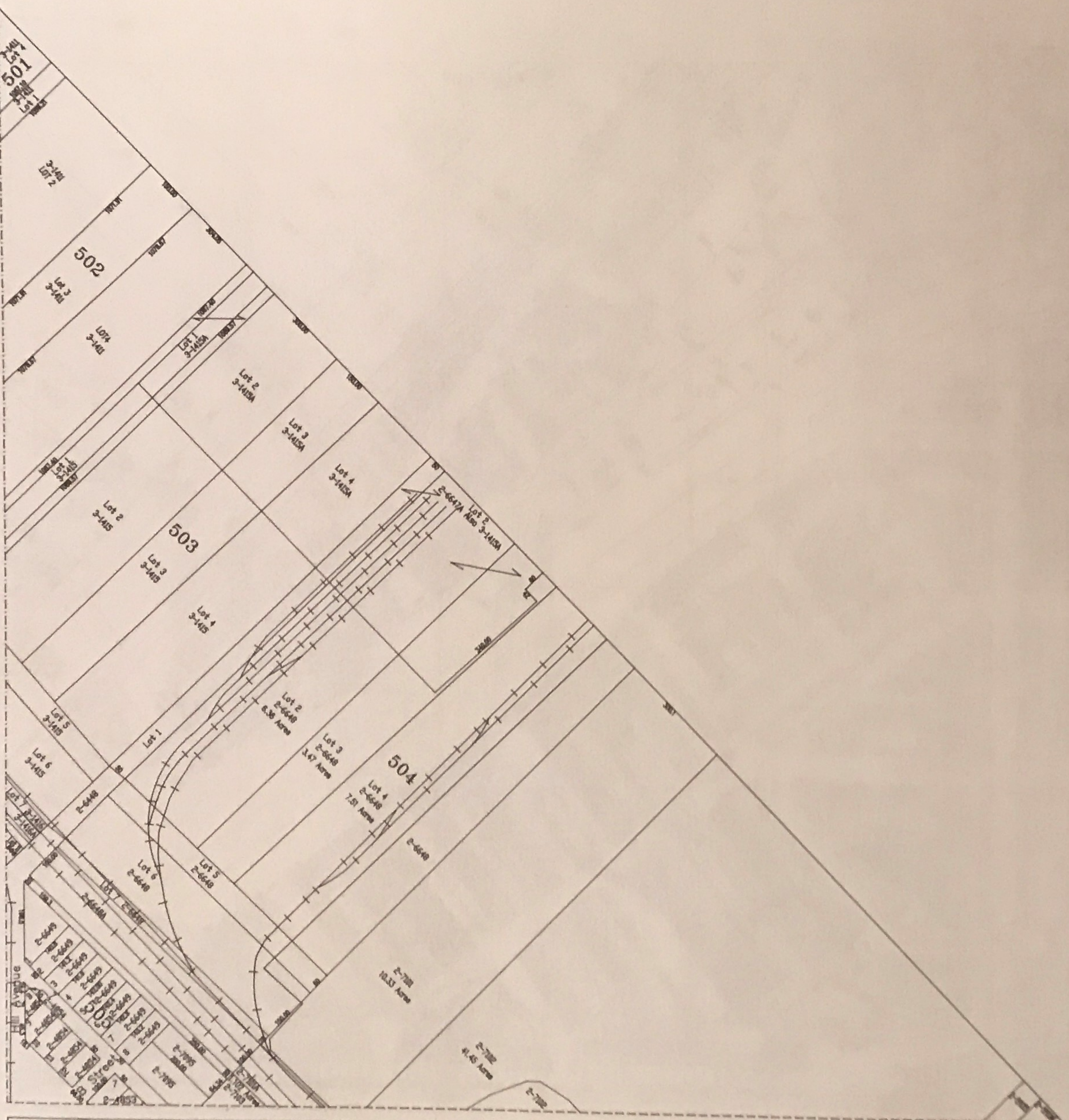
the contents of this map has been compiled from many sources and are believed to be substantially accurate. No representation is made as to complete accuracy.



# NORTH 1/2 SEC. 13-49-14

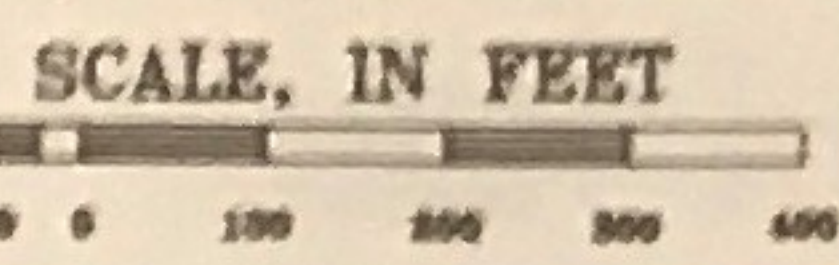
Prepared By:  
Douglas County Clerk's Office, R.W. Earhart  
9 January 1992

SCALE, IN FEET  
0 100 200 300 400

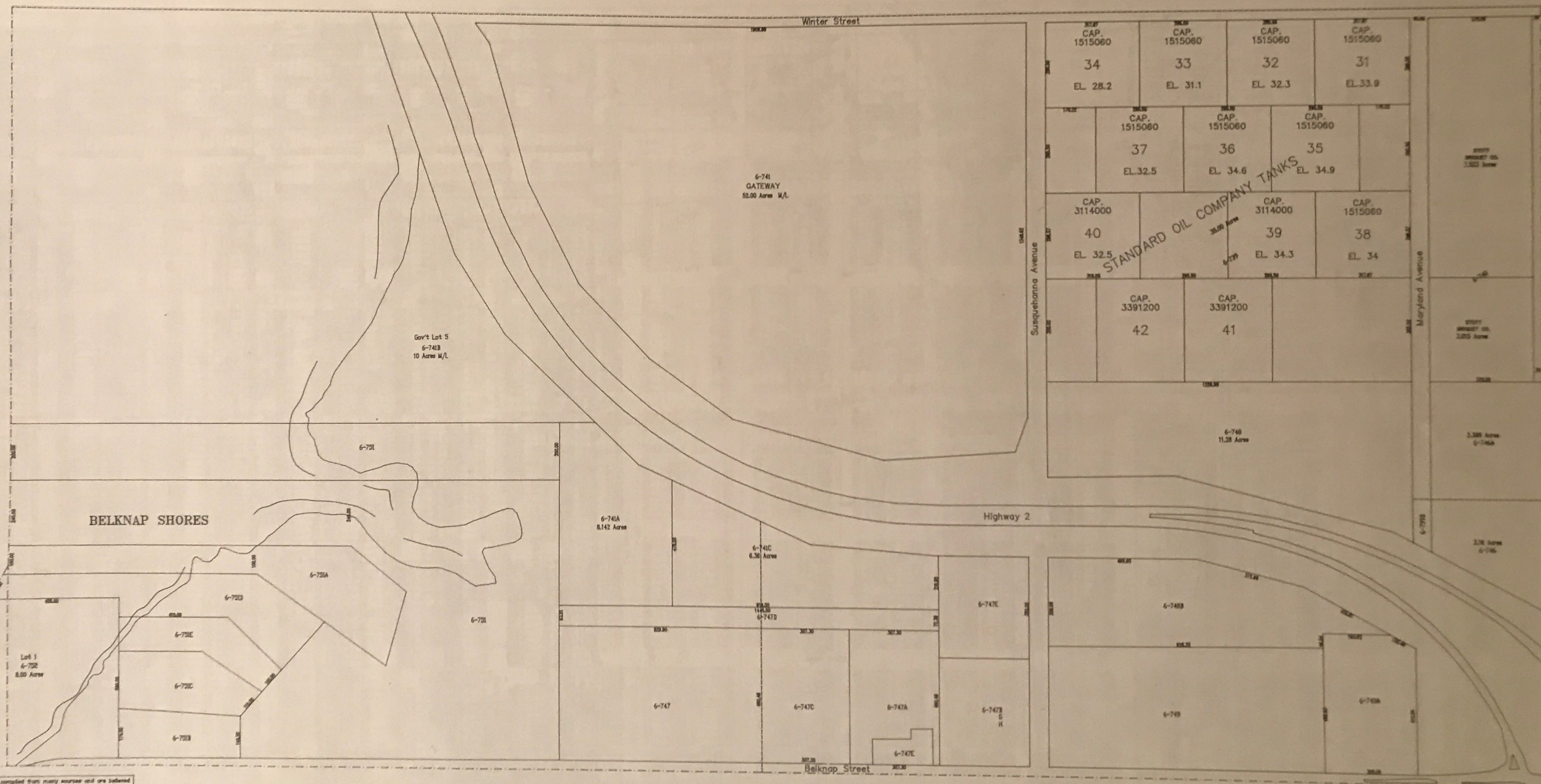


•The contents of this map has been compiled from many sources and are believed to be substantially accurate. No representation is made as to complete accuracy.

# SOUTH 1/2 SEC. 16-49-14



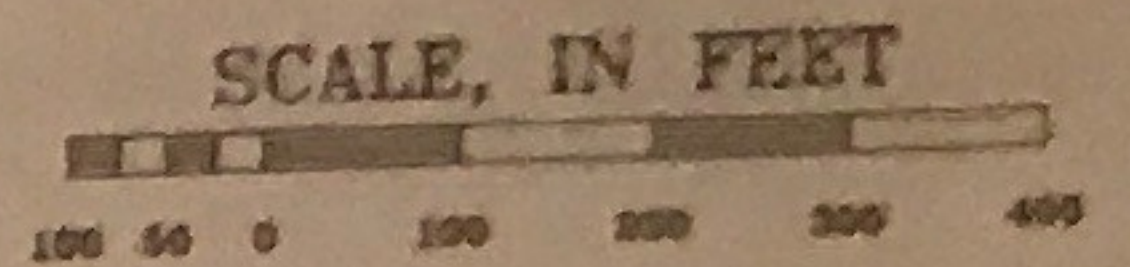
Prepared By:  
Douglas County Clerk's Office, P.J. De Luca  
1 May 1992



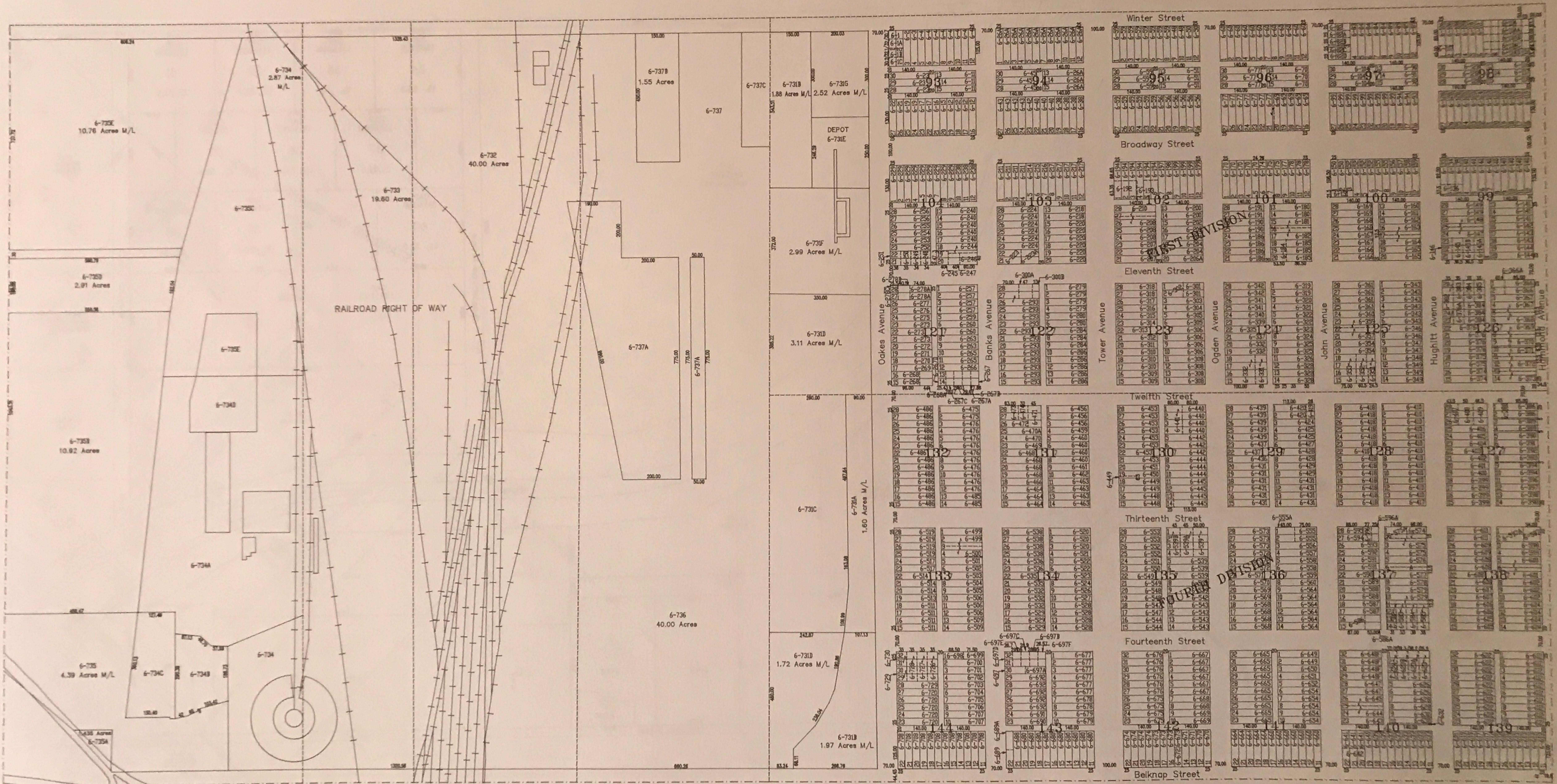
The contents of this map have been compiled from many sources and are believed to be substantially correct. No representation is made as to complete accuracy.



# SOUTH 1/2 SEC. 15-49-14



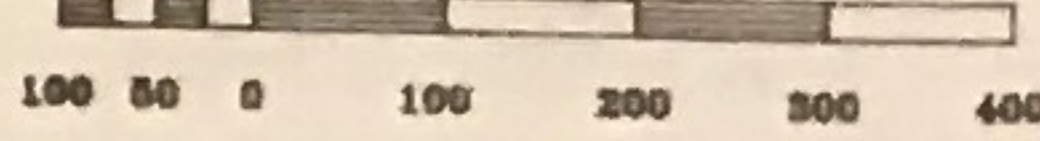
Prepared By:  
Douglas County Clerk's Office, P.J. De Luca  
26 March 1992



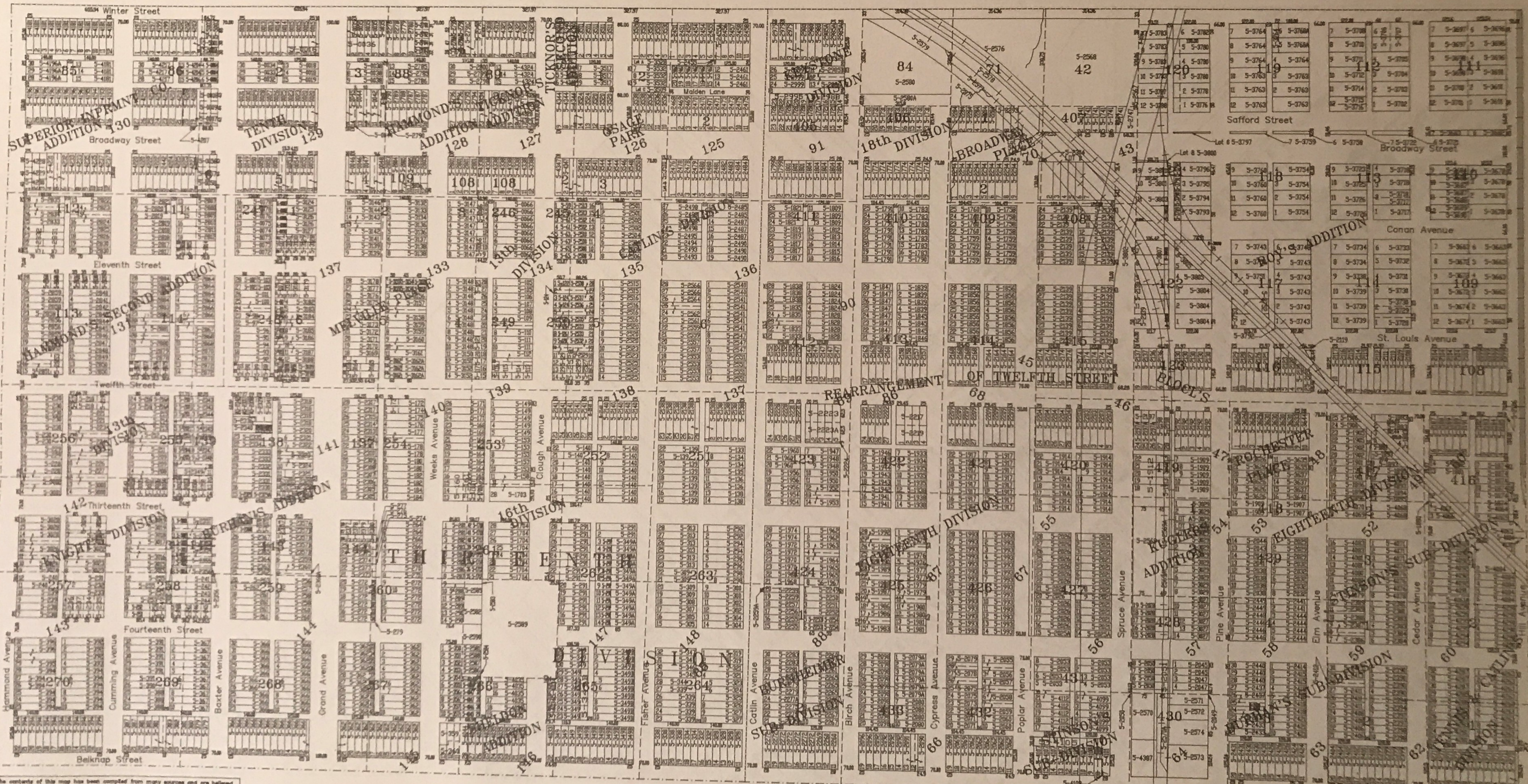
\*The contents of this map has been compiled from many sources and are believed to be substantially accurate. No representation is made as to complete accuracy.

# SOUTH 1/2 SEC. 14-49-14

SCALE, IN FEET



Prepared By:  
Douglas County Clerk's Office R.W. Earhart  
30 December 1991



\*The contents of this map has been compiled from many sources and are believed to be substantially accurate. No representation is made as to complete accuracy.