

The County of Douglas, in the State of Wisconsin, grantor, hereby quit claims to LAKEHEAD PIPE LINE COMPANY, INC.

grantee of Douglas County, in the State of Wisconsin for the sum of Ninety-seven Thousand Four Hundred and No/100 (\$97,400.00) Dollars, the following tract of land in said County of Douglas, to-wit:

For all properties listed in attached "Notice" marked Exhibit "A".

515065

OFFICE OF REGISTER OF DEEDS DOUGLAS COUNTY, WISCONSIN received for record this 27th day of July A.D. 19 73 at 4:00 o'clock P. M. recorded in Volume 311 on page 239. Deeds. Michael J. Doyle REGISTER Crystal Durkin DEPUTY

IN TESTIMONY WHEREOF, I Arne J. Anderson the County Clerk of the County of Douglas, State of Wisconsin, have executed this Deed pursuant to, and in virtue of the authority in me vested by the Statutes of the State of Wisconsin, and by the order of the Board of Supervisors of said County of record in my office, on the 19th day of July 1973, and for and on behalf of the said County of Douglas aforesaid, and have hereunto subscribed my name officially, and affixed the seal of the said Board of Supervisors, and my seal, at Superior, in said County of Douglas, this 20th day of July in the year of our Lord, one thousand nine hundred and seventy-three.

Done in presence of Doris Archambeau Shirley Aho Shirley Aho

Arne J. Anderson County Clerk of Douglas County, State of Wisconsin

STATE OF WISCONSIN, County of Douglas, ss.

BE IT REMEMBERED, That on the 20th day of July A. D. 19 73 before the undersigned, a Notary Public in and for said County, personally appeared Arne J. Anderson Clerk aforesaid, to me known to be the person who executed the above Deed and acknowledged the same as County Clerk of the County of Douglas, State of Wisconsin, for and on behalf of said County for the purpose therein mentioned.

Catherine D. Paterson Notary Public, Douglas County, Wisconsin Catherine D. Paterson

EXHIBIT A

Lots 10 thru 30 (even numbers), exc. R/W on West 9th Street.
 Lots 46-48-50-58-60-62-64-68-70-72-74-76-78-80-82-84, exc. R/W on West 9th Street
 Lots 112 through 142 (even numbers) exc. R/W on West 9th Street.
 Lots 148 through 156 (even numbers) exc. R/W on West 9th Street.
 Lots 162 through 188 (even numbers) exc. R/W on West 9th Street.
 Lot 192 exc. R/W on West 9th Street.
 Lots 9 through 49 (odd numbers) on West 10th Street.
 Lot 65 on West 10th Street.
 Lots 71 and 73 on West 10th Street.
 Lots 93 through 99 (odd numbers) on West 10th Street.
 Lot 103 on West 10th Street.
 Lots 107 through 119 on West 10th Street (odd numbers).
 Lots 141 through 147 (odd numbers) on West 10th Street.
 Lots 165 through 191 (odd numbers) on West 10th Street.
 NW $\frac{1}{4}$ exc. E $\frac{1}{4}$ of NW $\frac{1}{4}$, Block 1, West 11th Street.
 SW $\frac{1}{4}$ of Block 1, West 11th Street.
 Block 3, West 11th Street.
 Lots 34 through 48 (even numbers), subdivision of Block 4, West 11th Street.
 Lots 33 through 63 (odd numbers), subdivision of Block 4, West 11th Street,
 Lots on West 12th Street.
 NW $\frac{1}{4}$ of Block 5, West 11th Street.
 SW $\frac{1}{4}$ of W $\frac{1}{2}$, Block 5, West 11th Street.
 Block 6 exc. NE $\frac{1}{4}$, West 11th Street.
 Block 7, West 11th Street.
 Block 8, West 11th Street.
 NW $\frac{1}{4}$ of Block 9, West 11th Street.
 Lots 130-132-134, Euclid Place, Subdivision of Block 9, West 11th Street.
 Lot 136, Euclid Place, subdivision of Block 9, West 11th Street.
 Lots 134-136-138-140, subdivision of Block 10, West 11th Street.
 Lots 150-152-154-156, subdivision of Block 10, West 11th Street.
 Lots 129 through 151 (odd numbers), subdivision of Block 10 on West 11th Street,
 lots on West 12th Street.
 Lot 157 and 159, subdivision of Block 10 on West 11th Street, lots on West 12th Street.
 West 3/8 of NE $\frac{1}{4}$ of Block 11, West 11th Street.
 SW $\frac{1}{4}$ of Block 11, West 11th Street.
 Block 12 exc. the E $\frac{1}{4}$ of E $\frac{1}{2}$, West 11th Street.
 * Lots 1-9 inclusive and Lots 11-13-15-17, Daisy Division of Superior subdivision
 of Block 1 on West 13th Street.
 Lots 1 through 31 (odd numbers), Wortley's subdivision of Block 2, West 13th Street,
 lots on West 14th Street.
 Lots 2 through 30 (even numbers), Wortley's subdivision of Block 2 West 13th Street,
 lots on West 13th Street.
 Block 3, exc. W $\frac{1}{2}$ of NW $\frac{1}{4}$ and W $\frac{1}{2}$ of NE $\frac{1}{4}$, West 13th Street.
 NW $\frac{1}{4}$ and SW $\frac{1}{4}$, Block 4, West 13th Street.
 NW $\frac{1}{4}$ of Block 6, West 13th Street.
 SW $\frac{1}{4}$ of Block 6, West 13th Street.
 Block 5 exc. East 7/8 of NE $\frac{1}{4}$, West 13th Street.
 W $\frac{1}{2}$ of SE $\frac{1}{4}$ of Block 6, West 13th Street.
 E $\frac{1}{2}$ of SE $\frac{1}{4}$ and NE $\frac{1}{4}$ of Block 6, West 13th Street.
 Block 7, West 13th Street.
 Block 8, West 13th Street.
 Lots 129 through 153 inclusive, Hartopp Place, subdivision of Block 9, West
 13th Street.
 Lots 155-157-159, Hartopp Place, subdivision of Block 9, West 13th Street.
 Block 10, West 13th Street.
 NE $\frac{1}{4}$ of Block 11, West 13th Street.
 SE $\frac{1}{4}$ exc. W $\frac{1}{2}$ of SE $\frac{1}{4}$ of Block 11, West 13th Street.
 E $\frac{1}{2}$ of NW $\frac{1}{4}$ of Block 11, West 13th Street.
 E $\frac{1}{4}$ of SW $\frac{1}{4}$, Block 11, West 13th Street.
 Block 12 exc. SE $\frac{1}{4}$, West 13th Street.
 Lots 161-163-165-167-169-171-173-175, McBear Blocks, subdivision of SE $\frac{1}{4}$
 of Block 12, West 13th Street.

VOL 311 PAGE 241

PAGE 2 EXHIBIT A

- Block 1, West 15th Street.
- Block 2, West 15th Street exc. subdivision.
- Lots 1-2-3-4-13-15, subdivision of $E\frac{1}{2}$ of $W\frac{1}{2}$ of $E\frac{1}{2}$ of Block 2, McBean Blocks, West 15th Street.
- Undivided $10/48$ of $SE\frac{1}{4}$ of Block 3, West 15th Street.
- Lots 33 through 61 (odd numbers), Butler & McCabe's subdivision of Block 4, West 15th Street, lots on West 16th Street.
- Lots 34 through 60 (even numbers), Butler & McCabe's subdivision of Block 4, West 15th Street.
- $N\frac{1}{2}$ of Block 5, West 15th Street.
- West $7/8$ of Block 5, West 15th Street.
- Lots 81 and 83, subdivision of Block 5, McBean Blocks, West 15th Street.
- Lots 87-89-93, subdivision of Block 5, McBean Blocks, West 15th Street.
- Lots 70 through 96 (even numbers), subdivision of Block 6, West 15th Street.
- Lots 77 through 95 (odd numbers), subdivision of Block 6, West 15th Street, lots on West 16th Street.
- Lots 98 through 126 (even numbers), Belmont Place, subdivision of Block 7, West 15th Street, lots on West 14th Street.
- Lots 97 through 127 (odd numbers), Belmont Place, subdivision of Block 7, West 15th Street.
- Lot 125, Belmont Place, subdivision of Block 7, West 15th Street.
- Lot 127, Belmont Place, subdivision of Block 7, West 15th Street.
- Lots 98 through 126, subdivision of Block 8, West 15th Street (even numbers).
- Lots 97 through 127 (odd numbers), subdivision of Block 8, West 15th, lots on West 16th Street.
- $NE\frac{1}{4}$ and $E\frac{1}{2}$ of $NW\frac{1}{4}$, Block 9, West 15th Street.
- $W\frac{1}{2}$ of $W\frac{1}{2}$ of $NW\frac{1}{4}$ of Block 9, West 15th Street.
- Westerly 25 feet of $E\frac{1}{2}$ of $SW\frac{1}{4}$ of Block 9, West 15th Street.
- West 50 feet of $W\frac{1}{2}$ of $SW\frac{1}{4}$ of Block 9, West 15th Street.
- Lots 129-131-133-135, subdivision of $SE\frac{1}{4}$ of Block 9, McBean Blocks, West 15th Street.
- $SE\frac{1}{4}$ and $W\frac{1}{2}$ of Block 10, West 15th Street.
- Block 11, West 15th Street.
- Block $11\frac{1}{2}$, West of Villard Avenue, West 15th Street.
- Lots 178 through 192 (even numbers), subdivision of Block $11\frac{1}{2}$, West 15th Street, East of Villard Avenue, McBean Blocks, lots on West 14th Street.
- Lots 177 through 183 (odd numbers), subdivision of Block $11\frac{1}{2}$, West 15th Street, East of Villard Avenue, McBean Blocks.
- Block 12, West 15th Street exc. Villard Avenue.

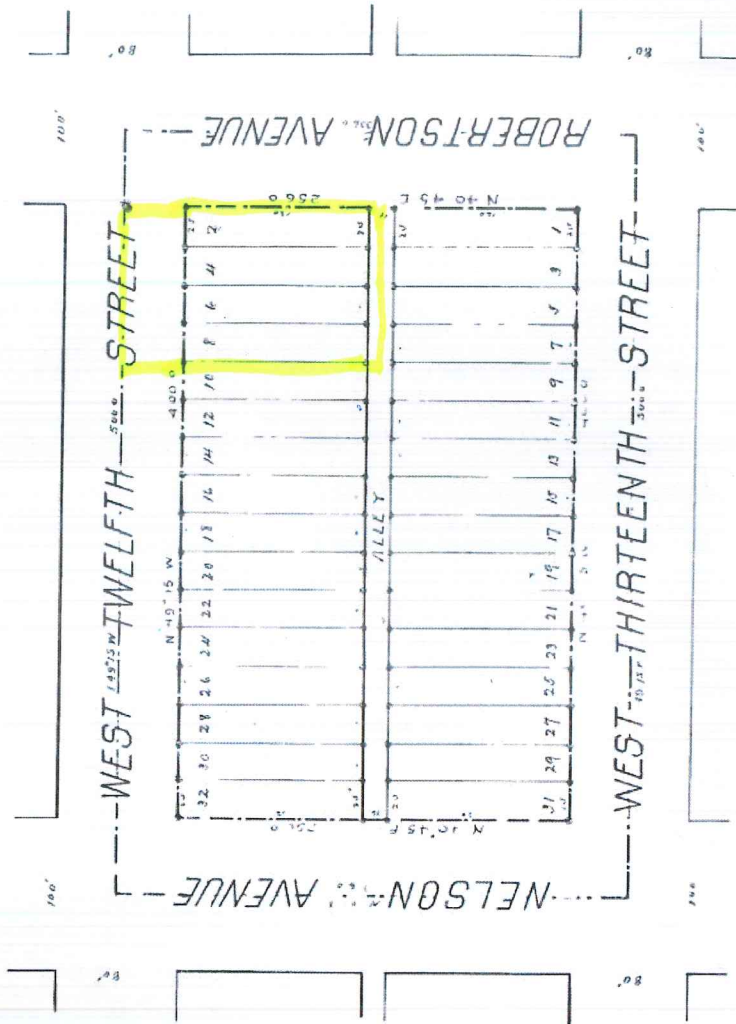
000

DAISY DIVISION

CITY OF SUPERIOR

Superior

SCALE 1 IN GO FT
M. A. STRAND
1914



For Resolution vacating streets & alleys on this plat
See Vol 326 Records, Page 616.