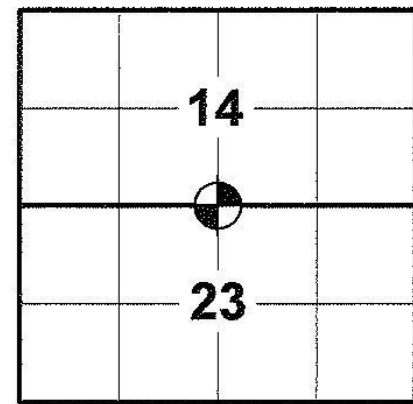


U.S. Public Land Survey Monument Record

This form is intended to comply with all requirements of Wisconsin Administrative Code A-E 7.08

**North Quarter Corner of Section 23,
Township 49 North, Range 14 West,
City of Superior, Douglas County, WI**

T49N., R14W.



Description of original monument and accessories, and subsequent restorations:

GLO: George R. Stuntz, Deputy Surveyor, March - May, 1854

West corrected between Sections 14 & 23, Variation 10° - 34' East

39.60 chains: set quarter section corner

54.60 chains: stream, 3 links wide, runs NE

72.80 chains: stream, 10 links wide, runs NE

79.20 chains: section corner

BT's:

14" birch @ S38°E - 13 links

16" spruce @ N70°E - 12 links

Douglas County Coordinate

(NAD 83/91)

N: 305400.054

E: 151115.121

WPA Project: 49-14-23

Map states iron at corner, T&H, 1889

E.B. Banks, Jan. 1892

City of Superior Monumental Map- from Oaks Ave to Hill & from Bay to Twenty-Eighth St.

North line of Northeast Quarter of Section 23 record distance of 2608.28'

Interior angle @ NE Corner, Section 23: 91°43'30"

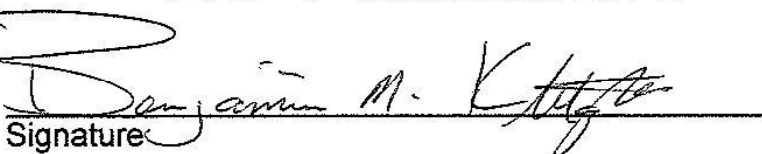
Evidence found and justification for locating corner as shown:

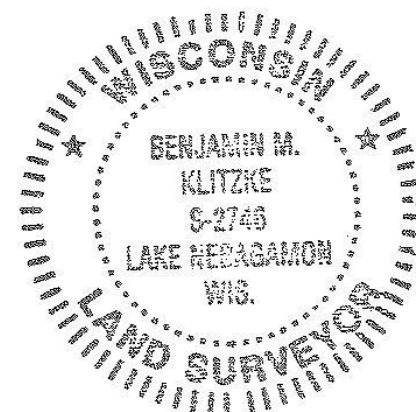
No original government survey evidence was found. Monuments were recovered at the NE Corner and E1/4 Corner of Section 23 which were perpetuated by William Anderson and U.S. Public Land Survey Monument Record sheets filed by him on Feb. 2010.

I set a Mag Spike for this corner using E.B. Banks' record angle and distance at the NE Corner of Anderson's perpetuated east line of Section 23. Reference monuments were established as shown on sketch.

I, Benjamin M. Klitzke, Registration Number 2746, certify that the corner location on this record was determined by me and that this U.S. Public Land Survey Monument Record is correct and complete to the best of my knowledge and belief.

Dated this 3rd day of December, 2012


Signature

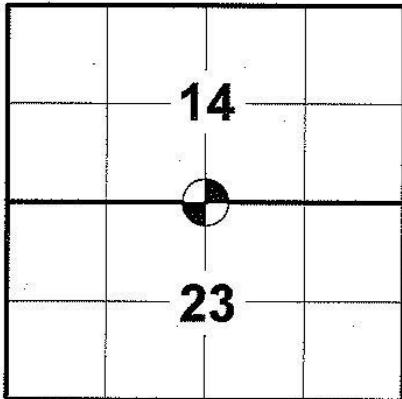


Index No. N-19
49 14 14 0020

(Sketch on Back)

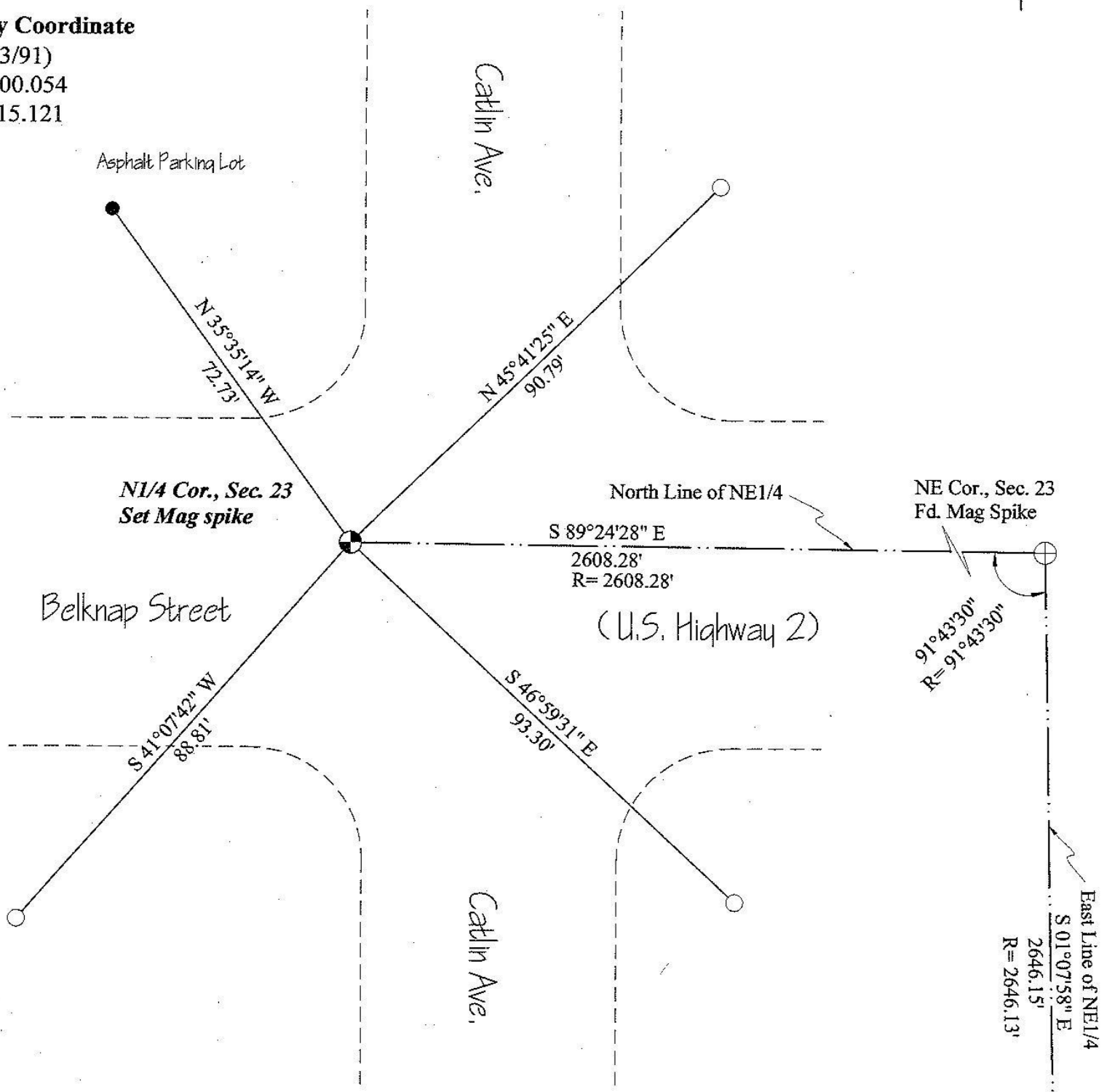
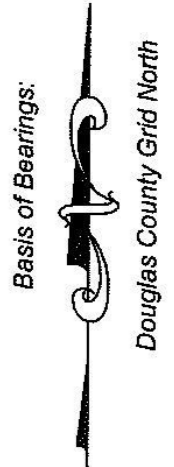
U.S. Public Land Survey Monument Record

T49N., R14W.



Douglas County Coordinate

(NAD 83/91)
N: 305400.054
E: 151115.121



Legend

- ⊙ Denotes Mag Spike set
- Denotes Cotton Spindle set
- Denotes 3/4" x 24" Rebar set
- R= Denotes record angle or distance

Scale: 1"=30'



E1/4 Cor., Sec. 23
Fd. Cotton Spindle