

# PLAT BOOK

OF

## DOUGLAS COUNTY

## WISCONSIN

Published by

**W.W.HIXSON & CO.**

Rockford, Illinois

400

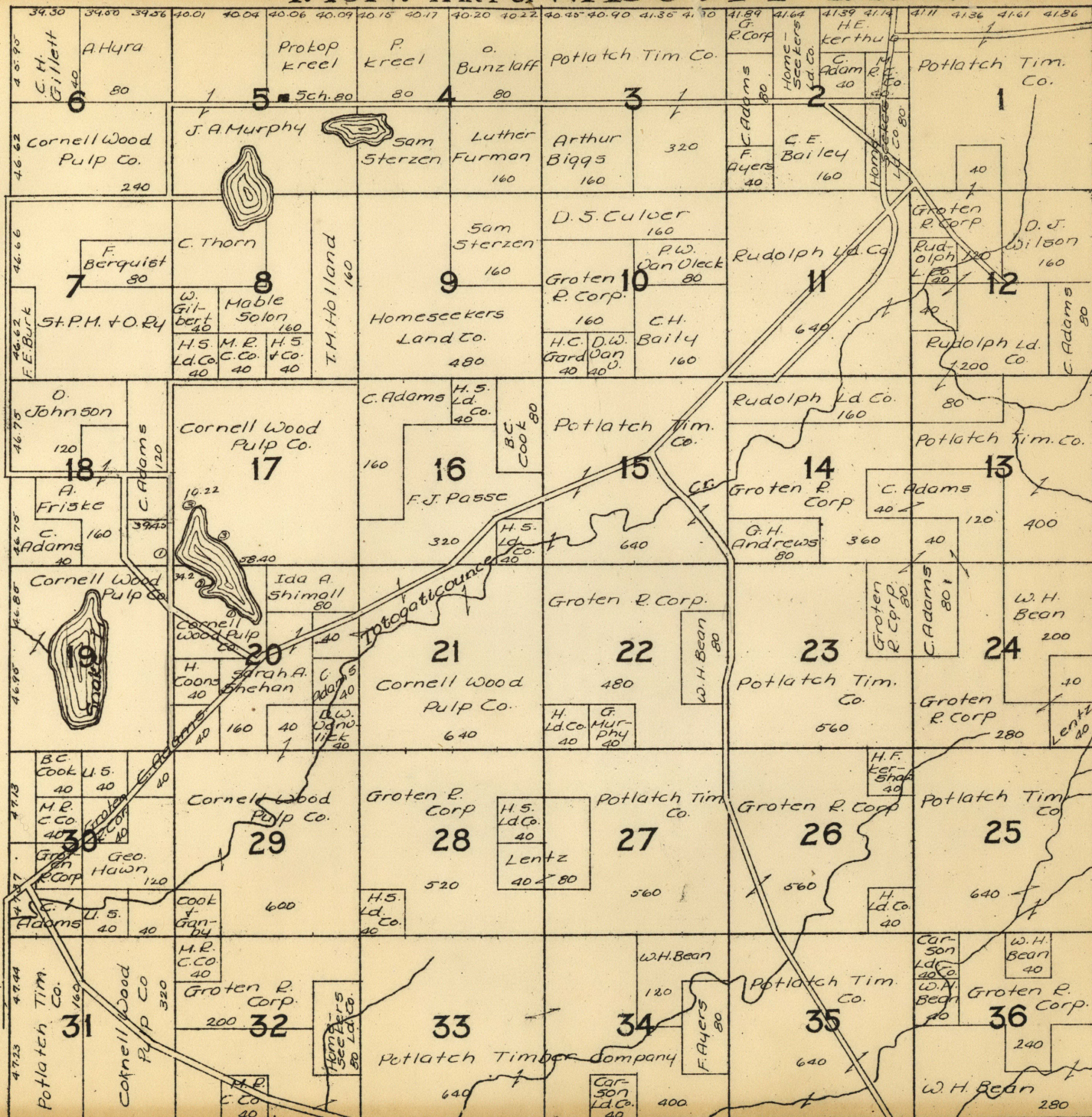
Douglas

# DOUGLAS COUNTY



BURNETT R. 11 W. R. 12 W. CO. WASTERN R. 13 W. R. 14 W. BAYFIELD CO.

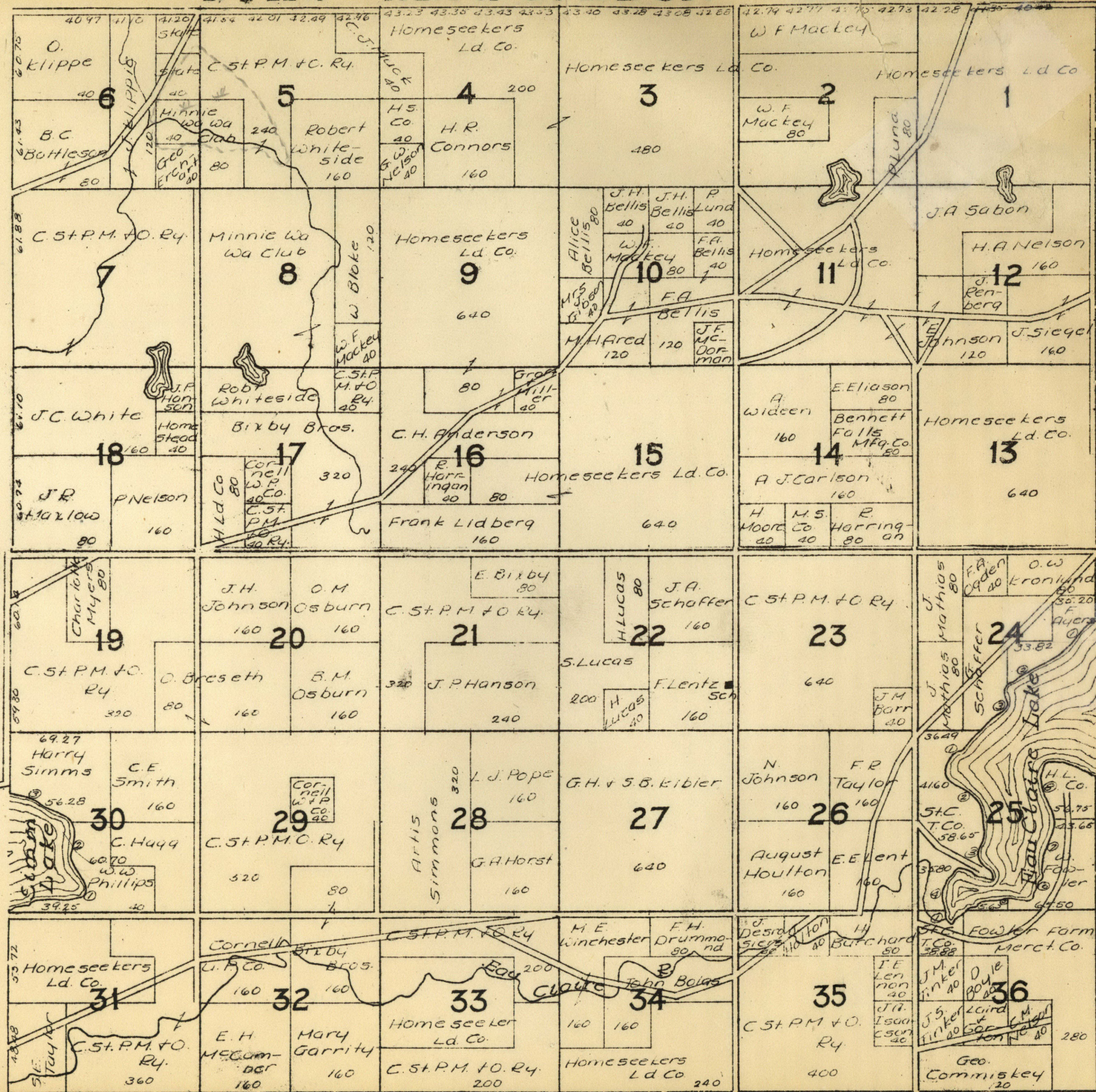
# T.43N. PART OF WASCOTT R.10W.



T.44N.

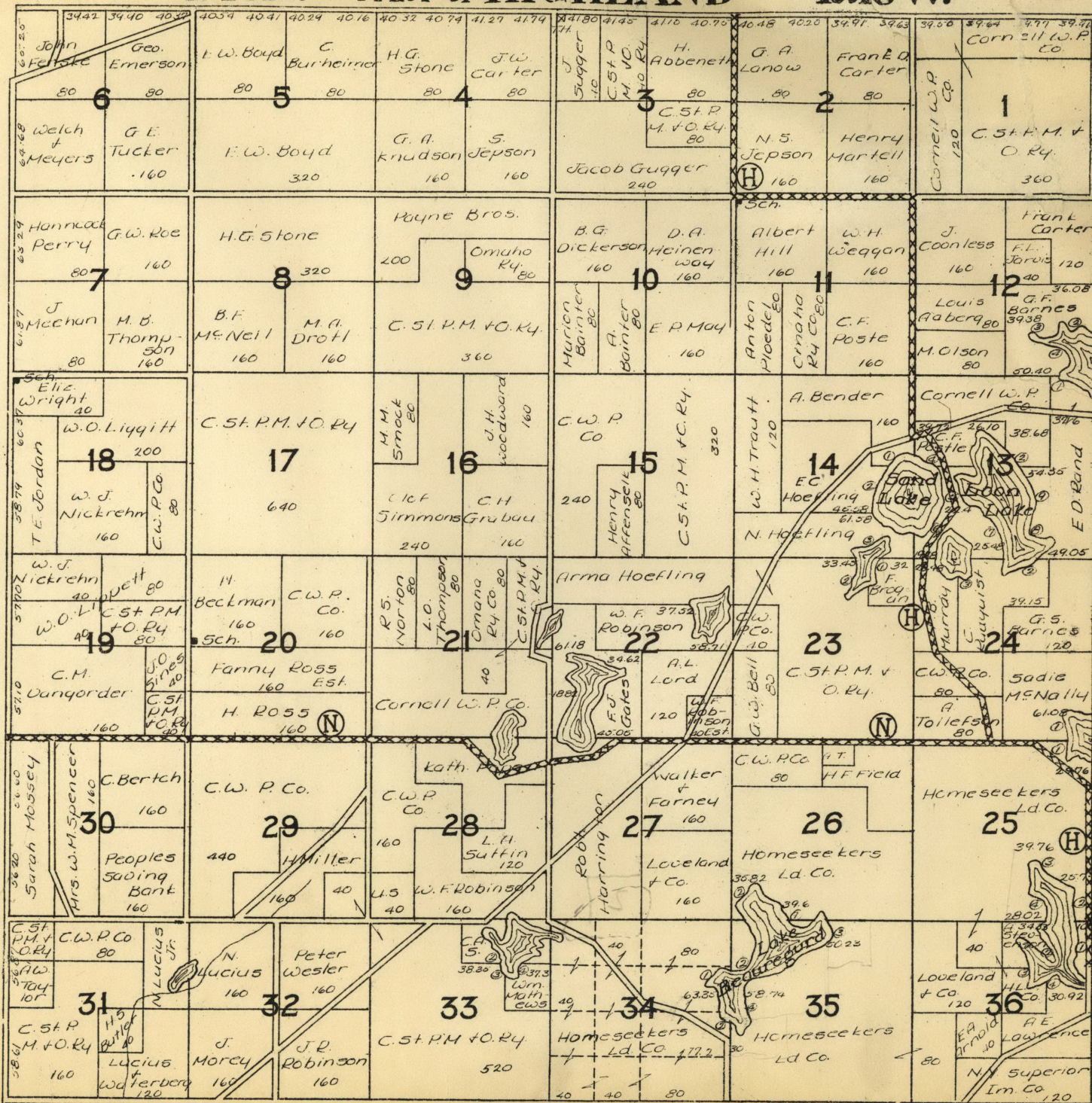
PART OF GORDON

R.10W.

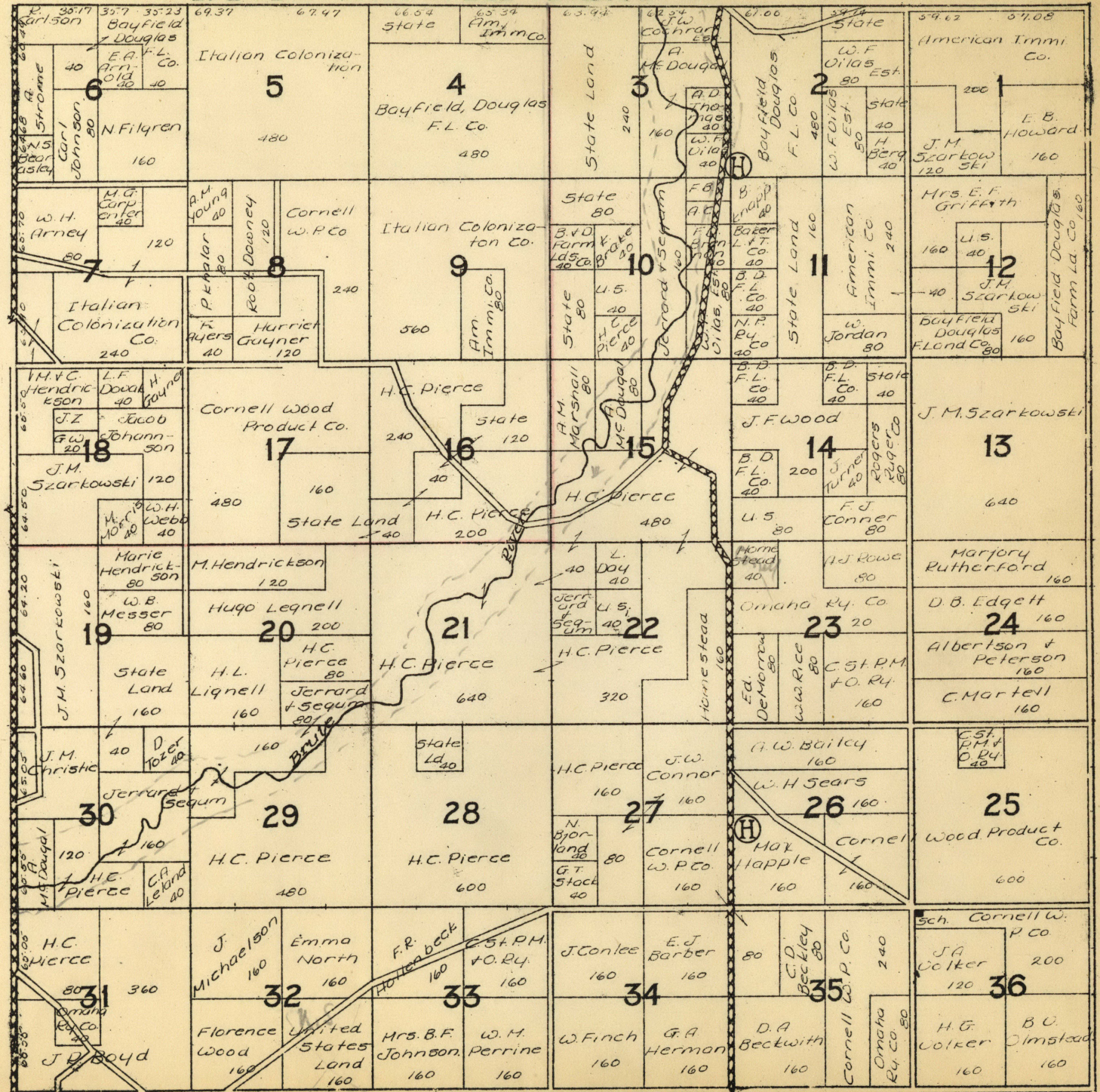


# T.45N. PART OF HIGHLAND

# R.10W.



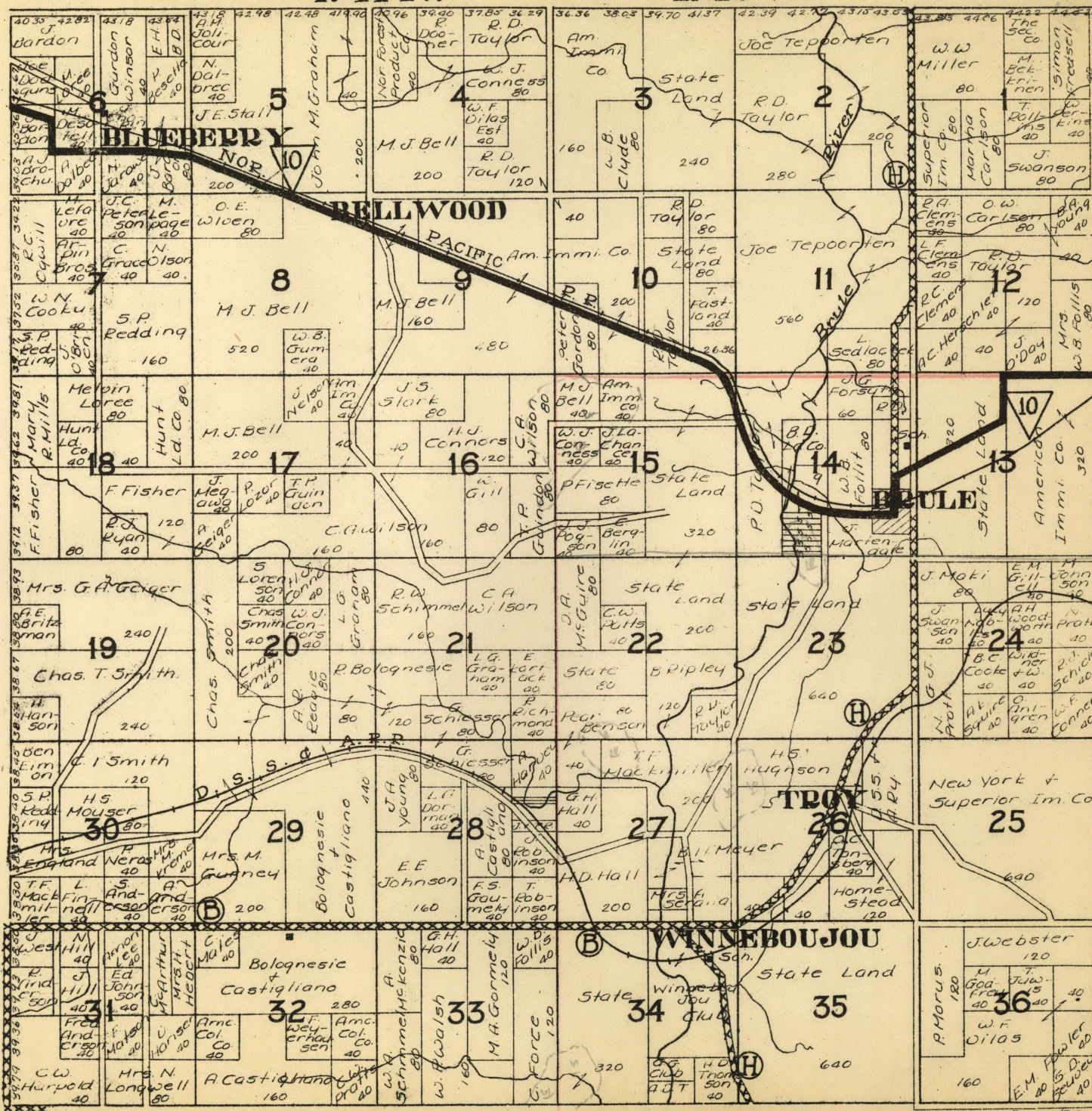
# T.46N. PART OF HIGHLAND R.10W.



T.47N.

R.10W.

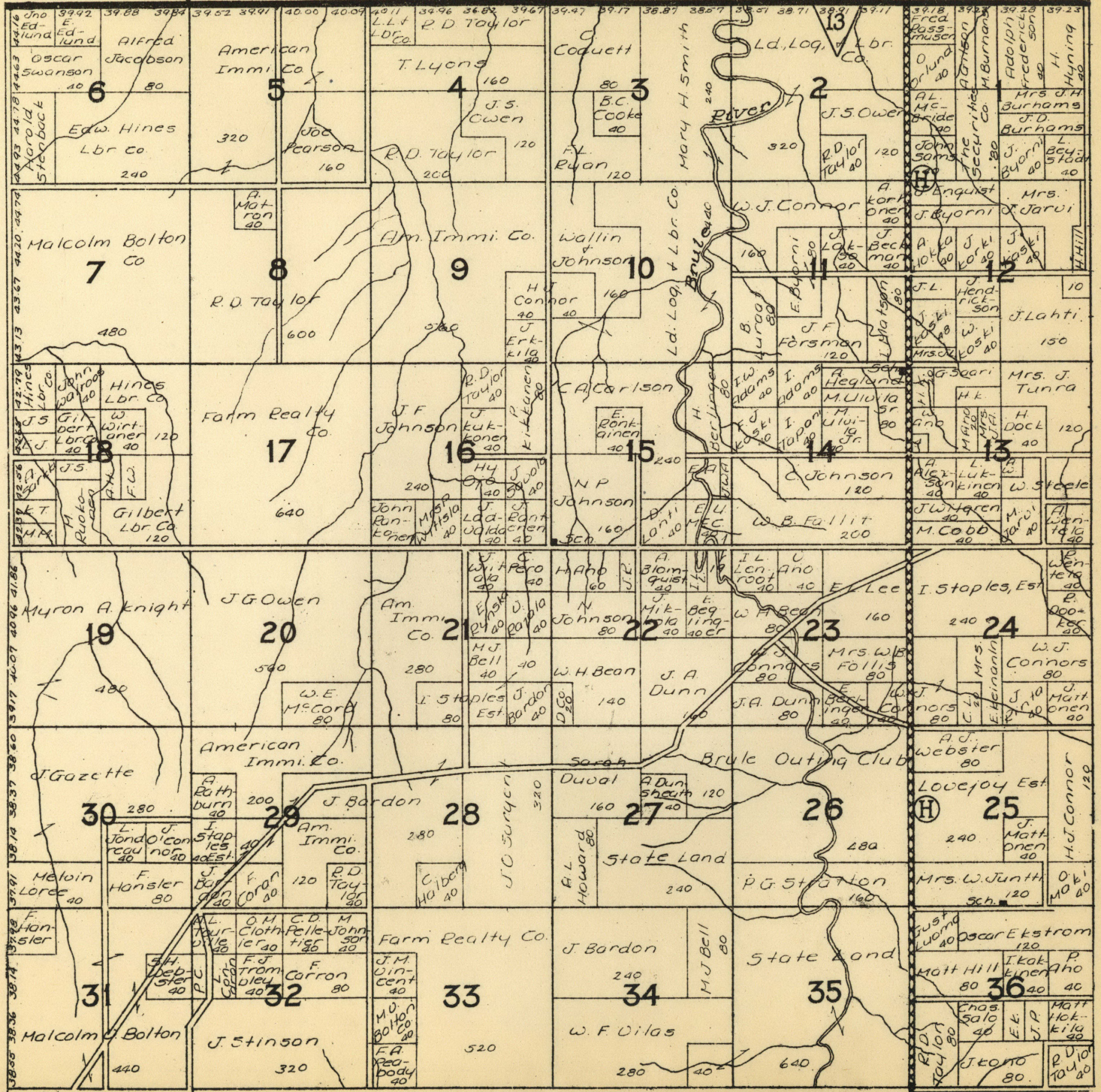
DOUGLAS



13

T.48N.

R.10W.

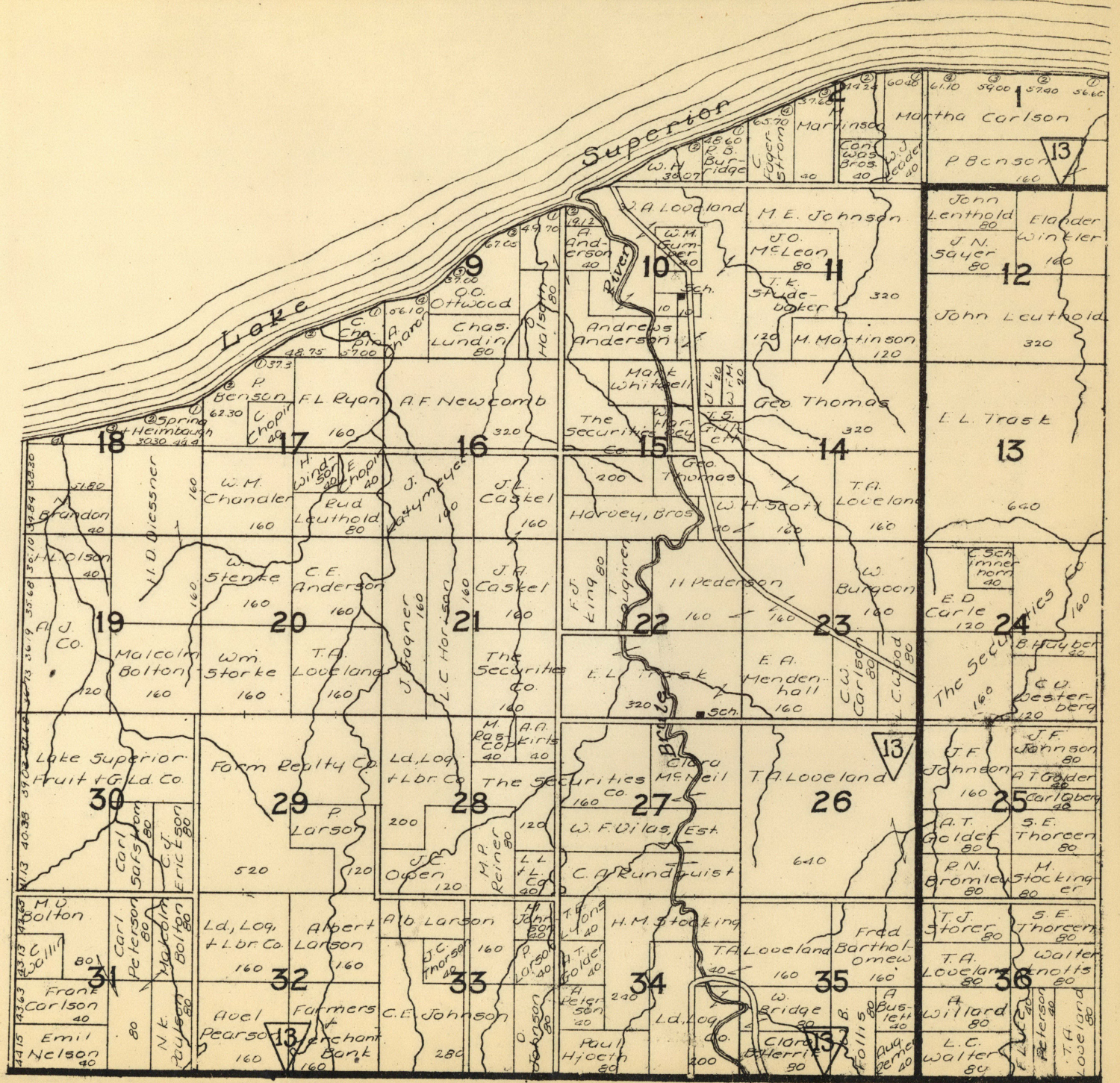




T.49N.

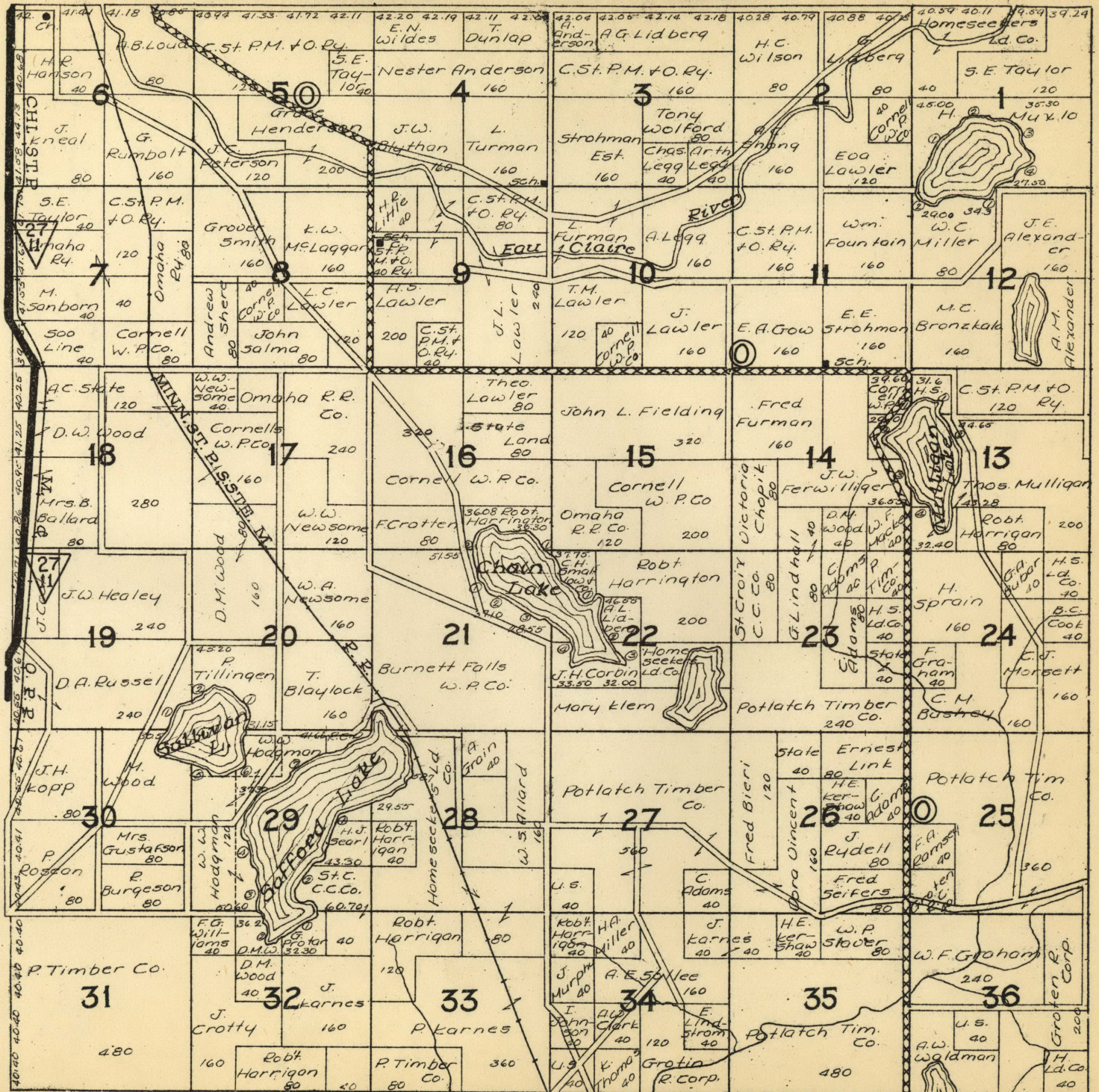
PART OF CLOVERLAND

R.10W.



T.43N.

R.11W.

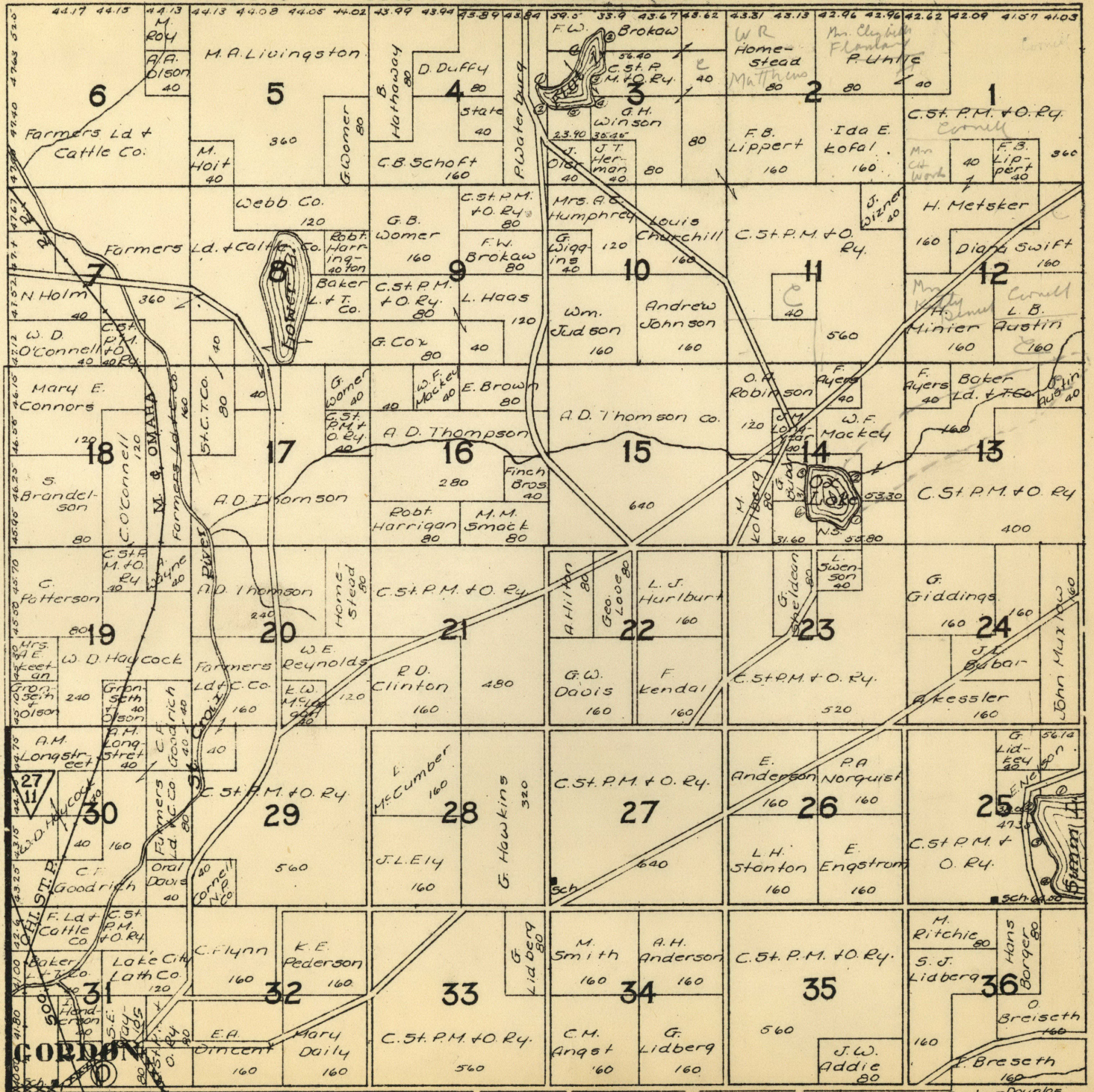


Douglass

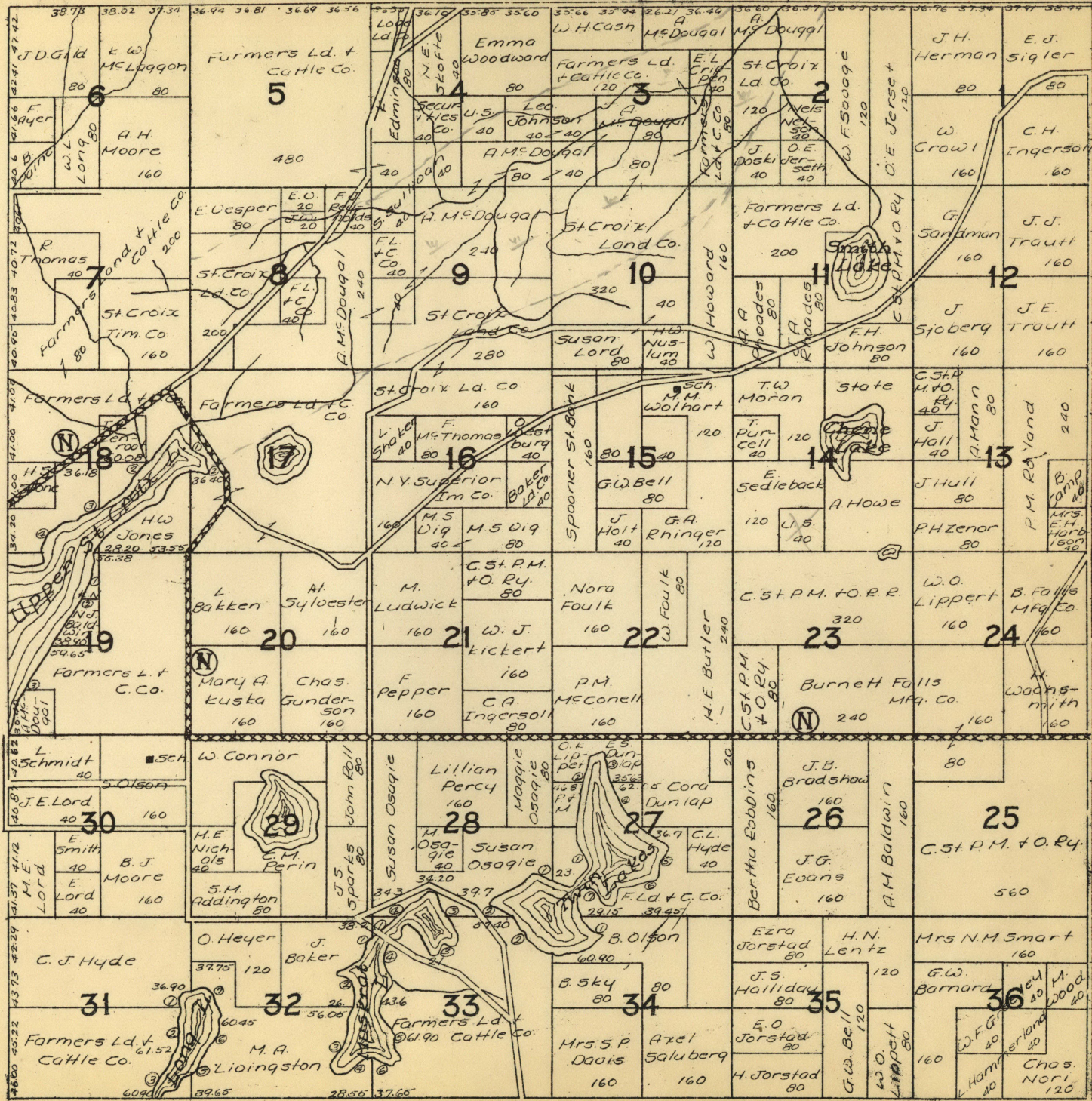
T.44N.

PART OF GORDON

R.11W.



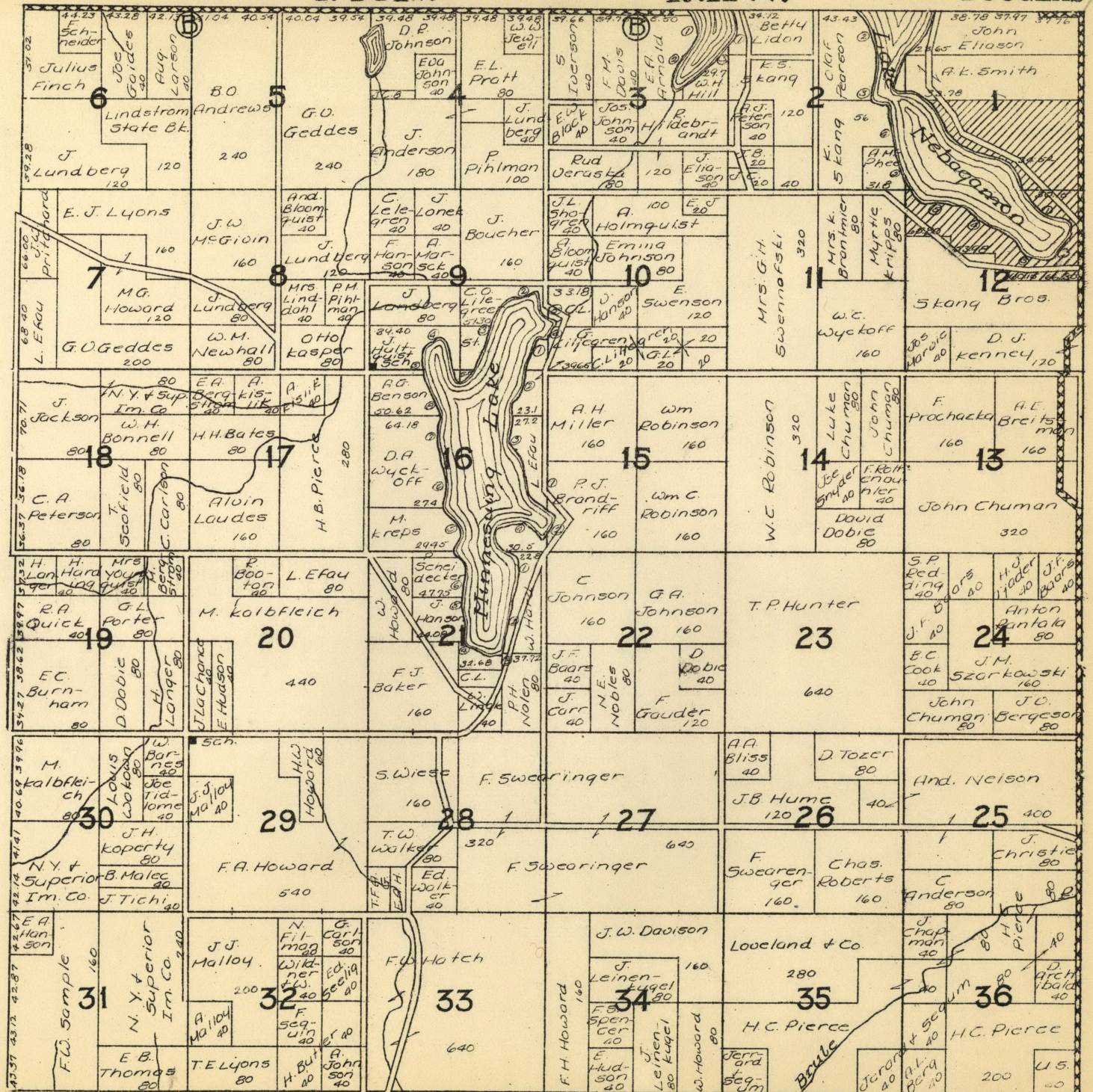
# T.45N. PART OF SOLON SPRINGS R.11W.



T.46N.

R.11W.

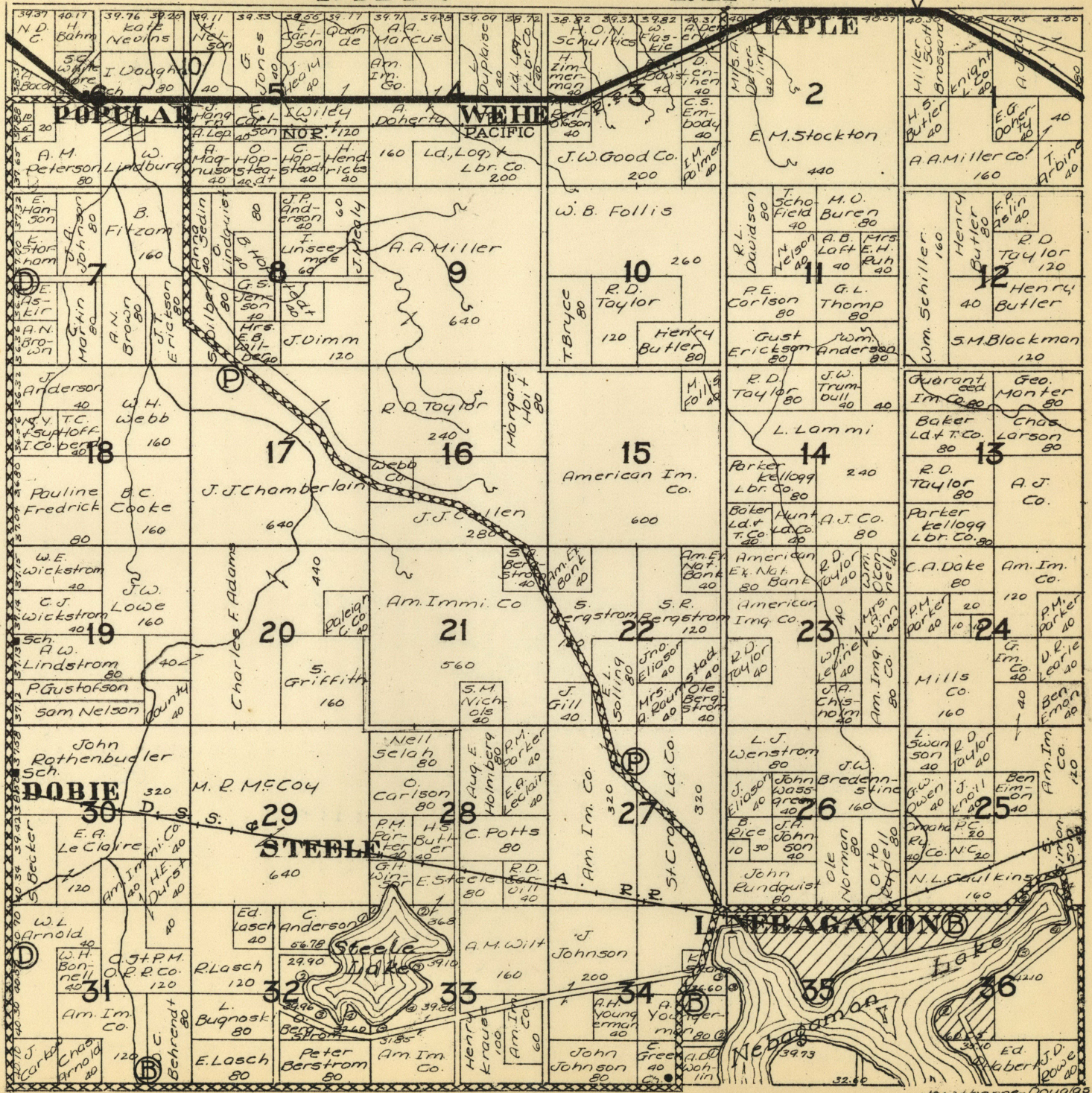
DOUGLAS



T.47N.

R.11W.

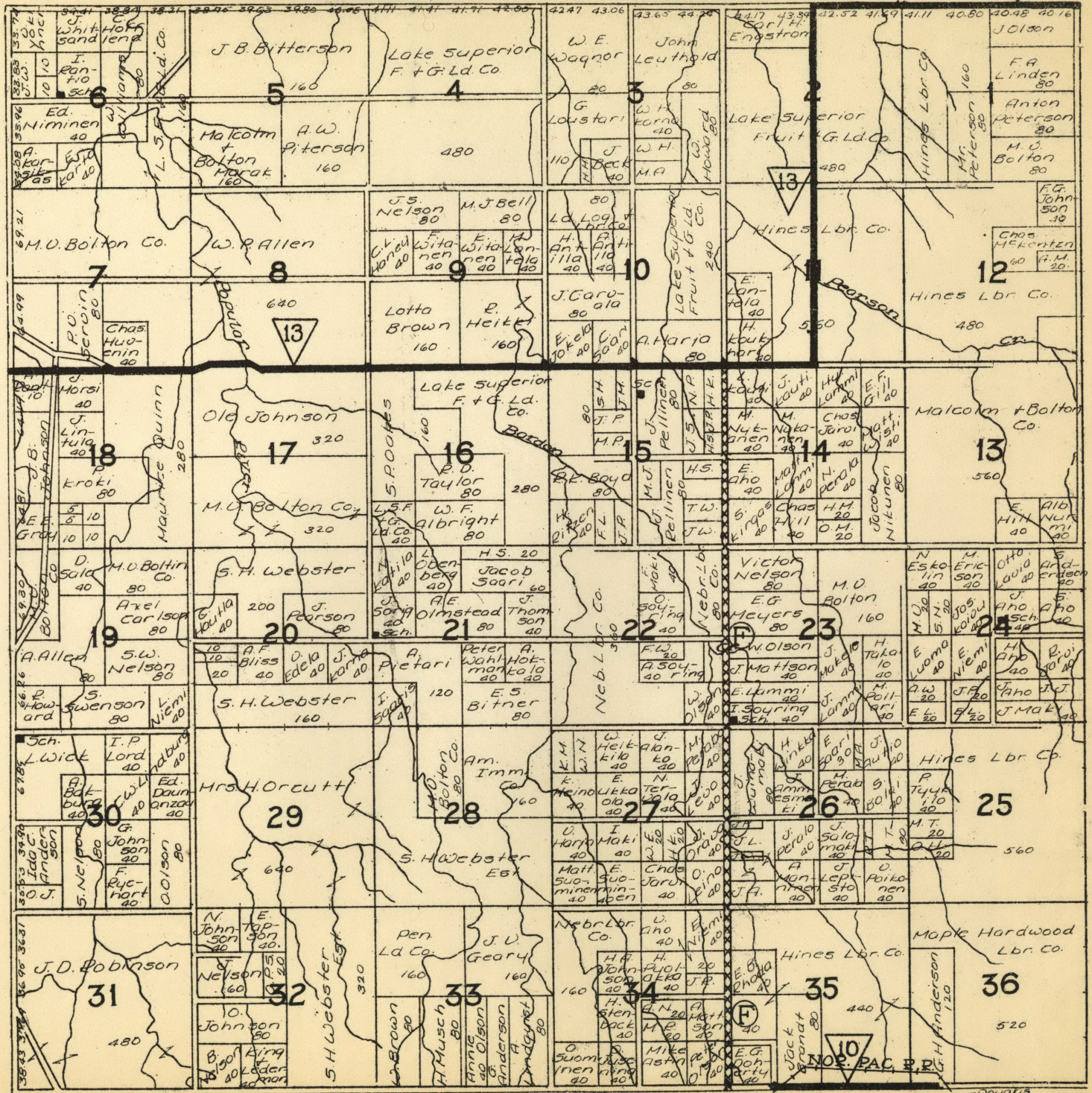
10



T.48N.

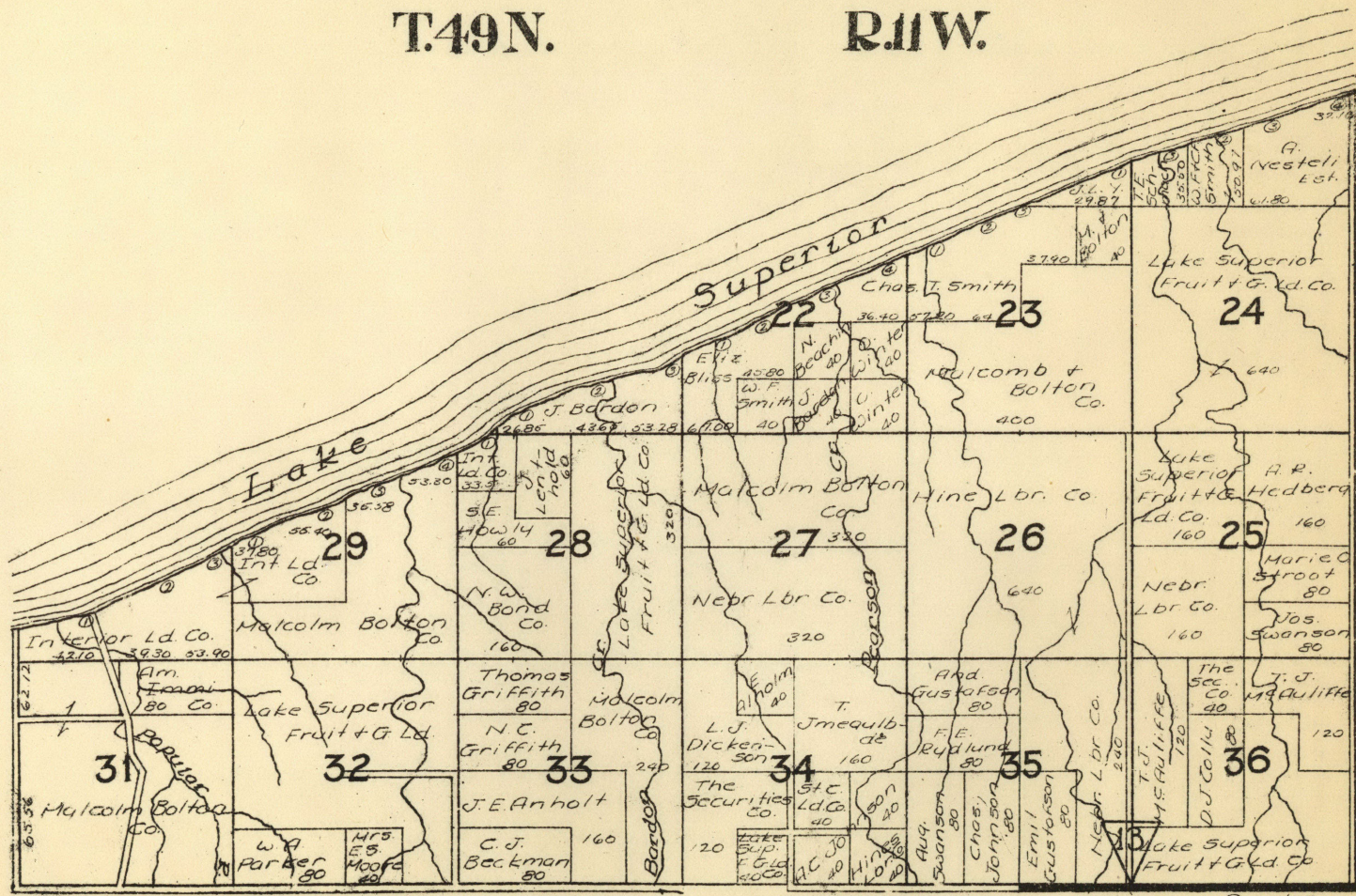
R.11W.

13



T.49N.

R.11W.



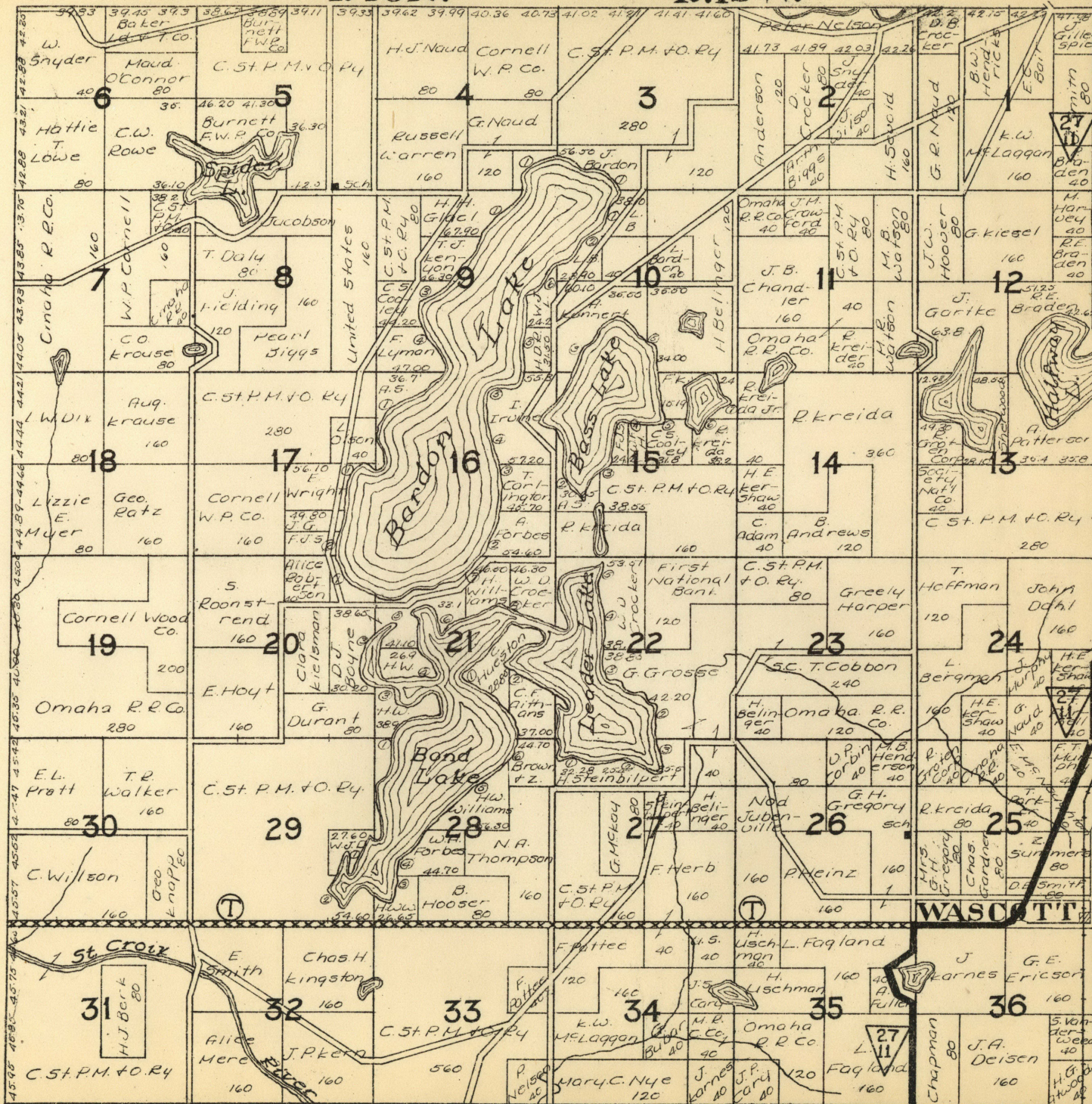
- Douglas



T.43N.

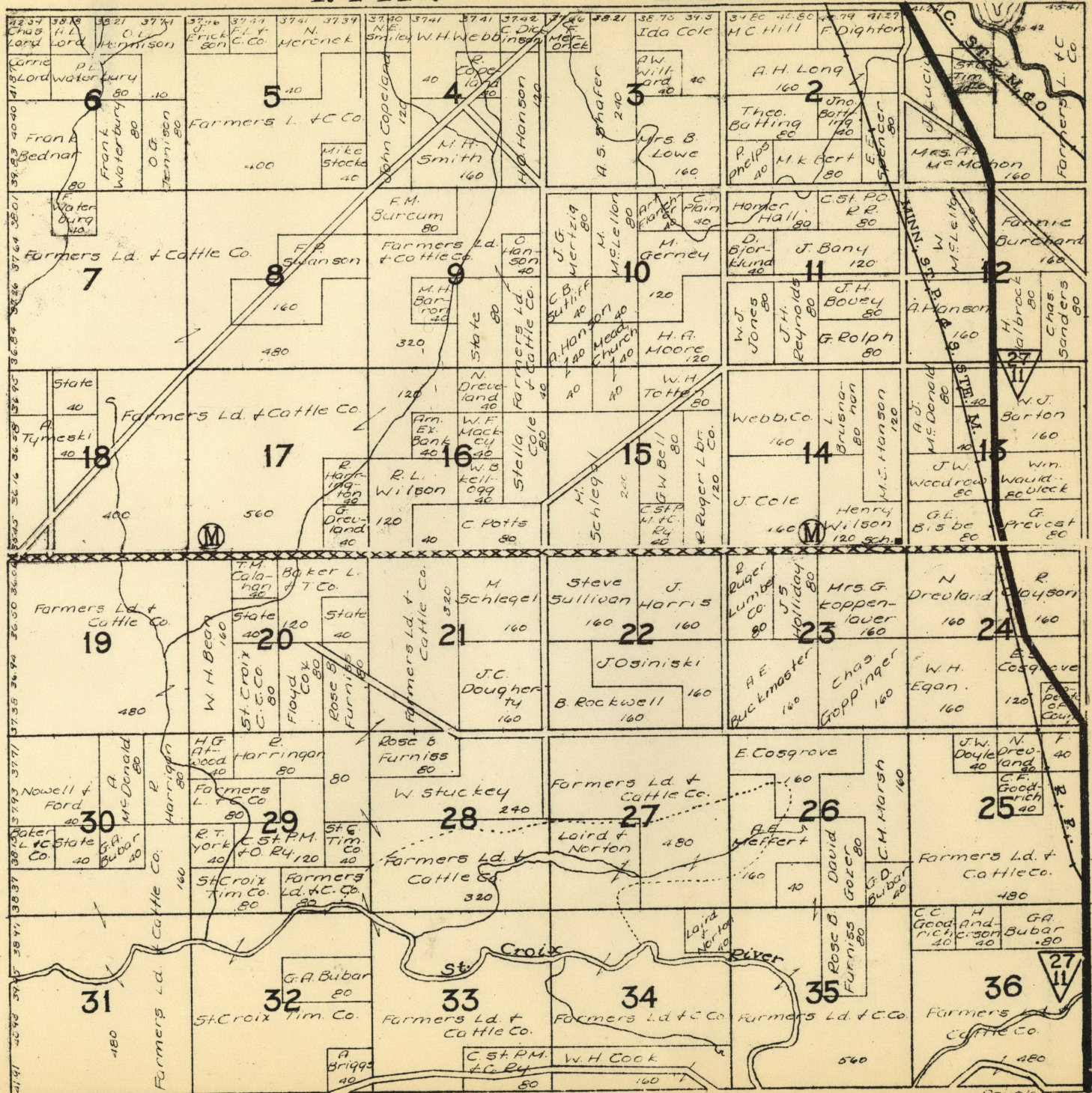
R.12W.

DOUGLAS



T.44N.

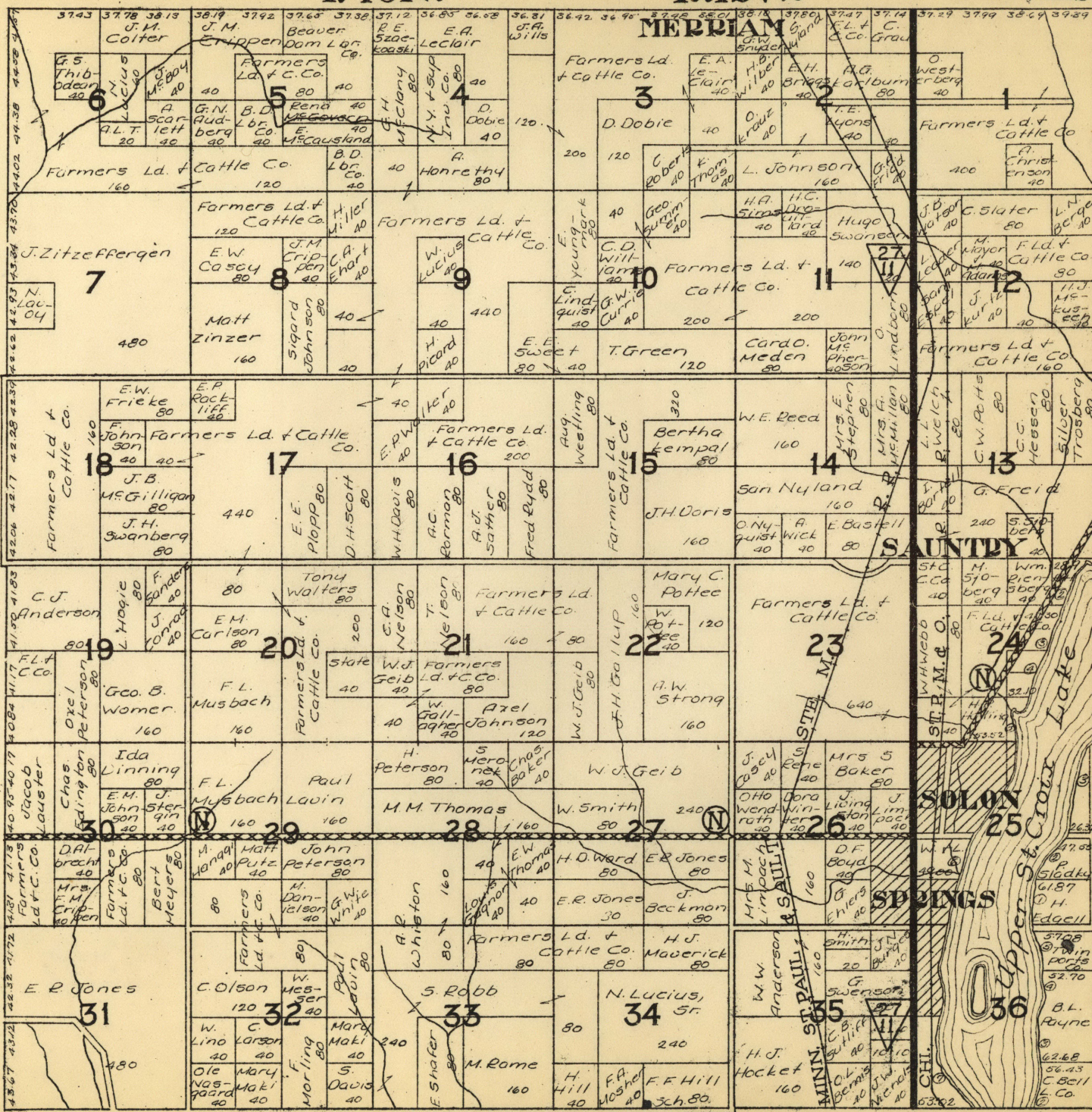
R.12W.



T.45N.

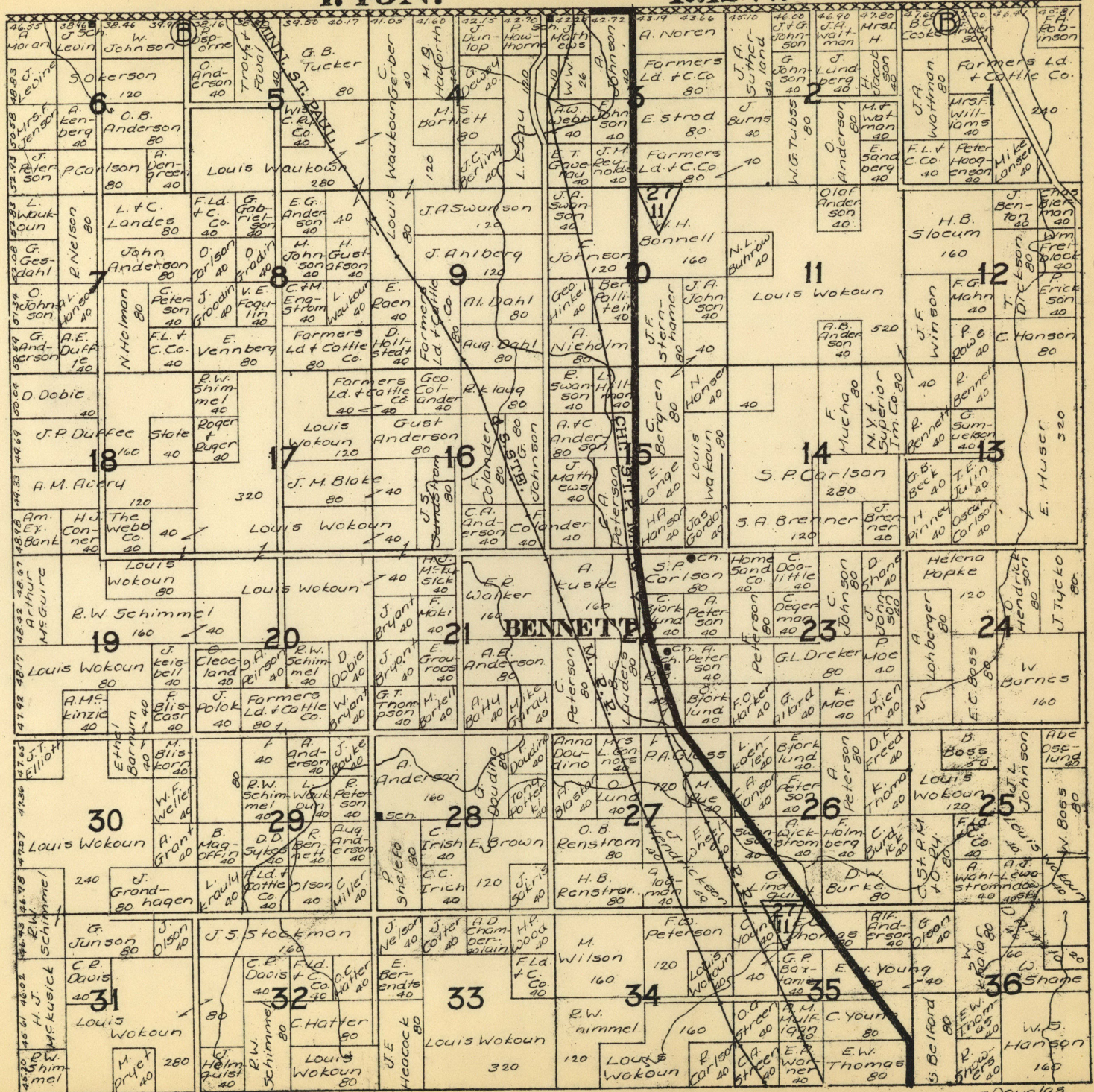
R.12W.

DOUGLAS



T.46N.

R.12W.



T.47N.

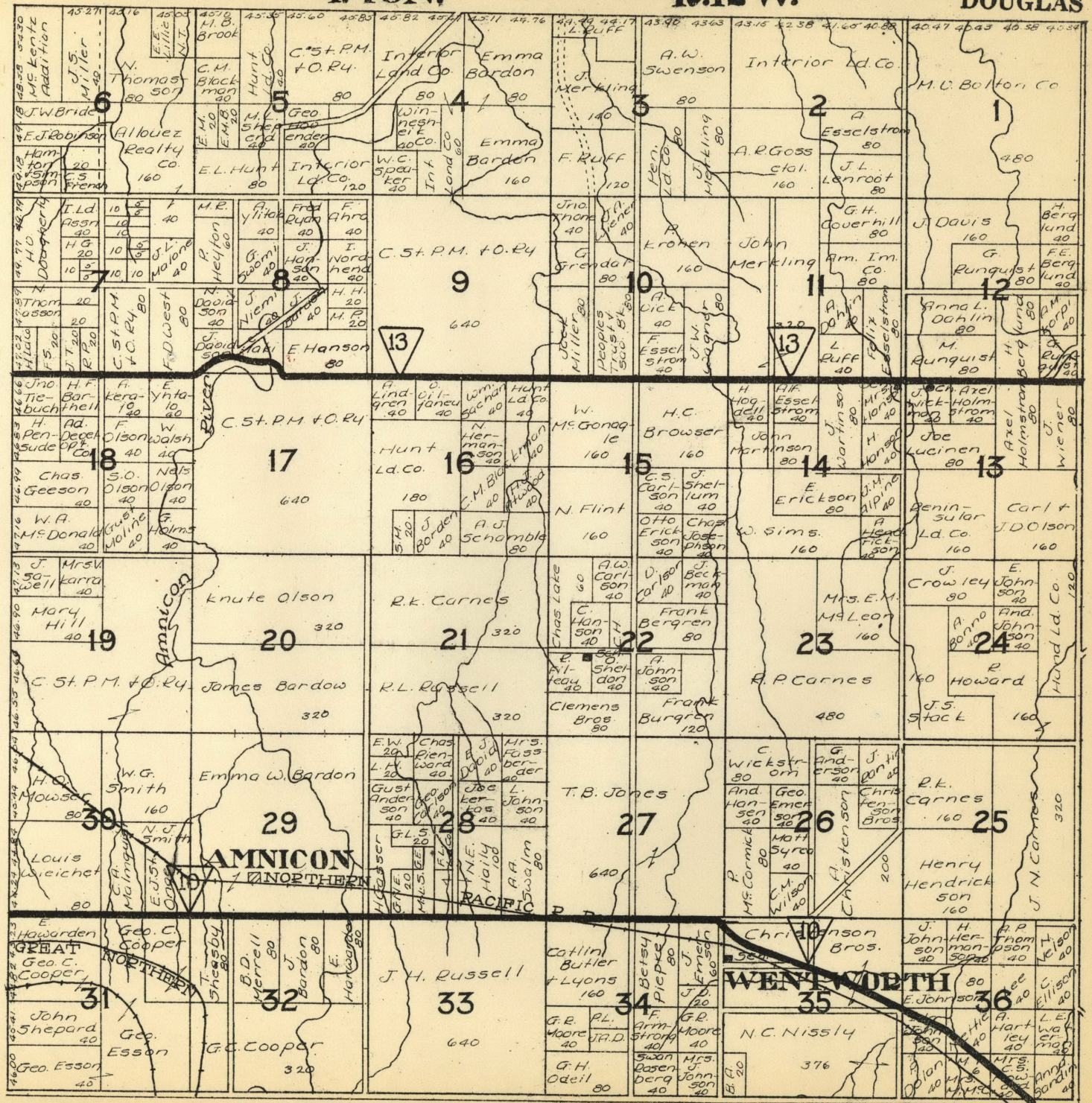
R.12W.



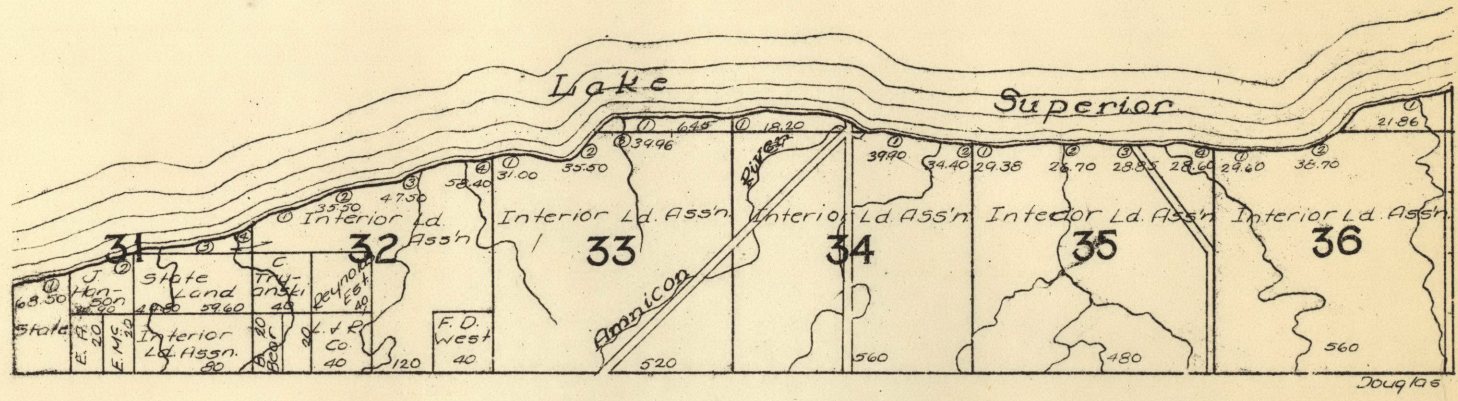
T.48N.

R.12W.

DOUGLAS



T.49N. PART OF LAKESIDE R.12W.



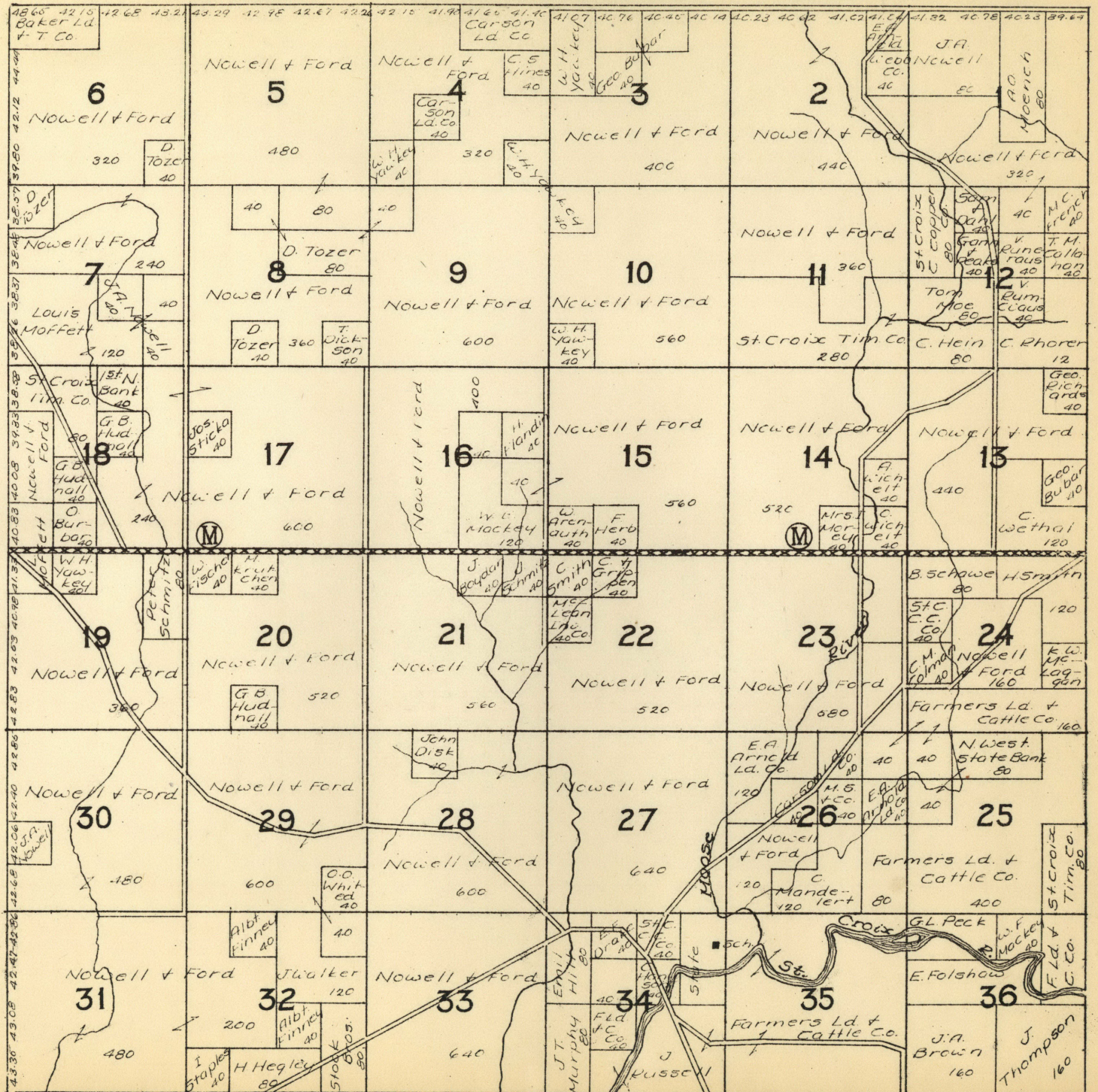




T.44N.

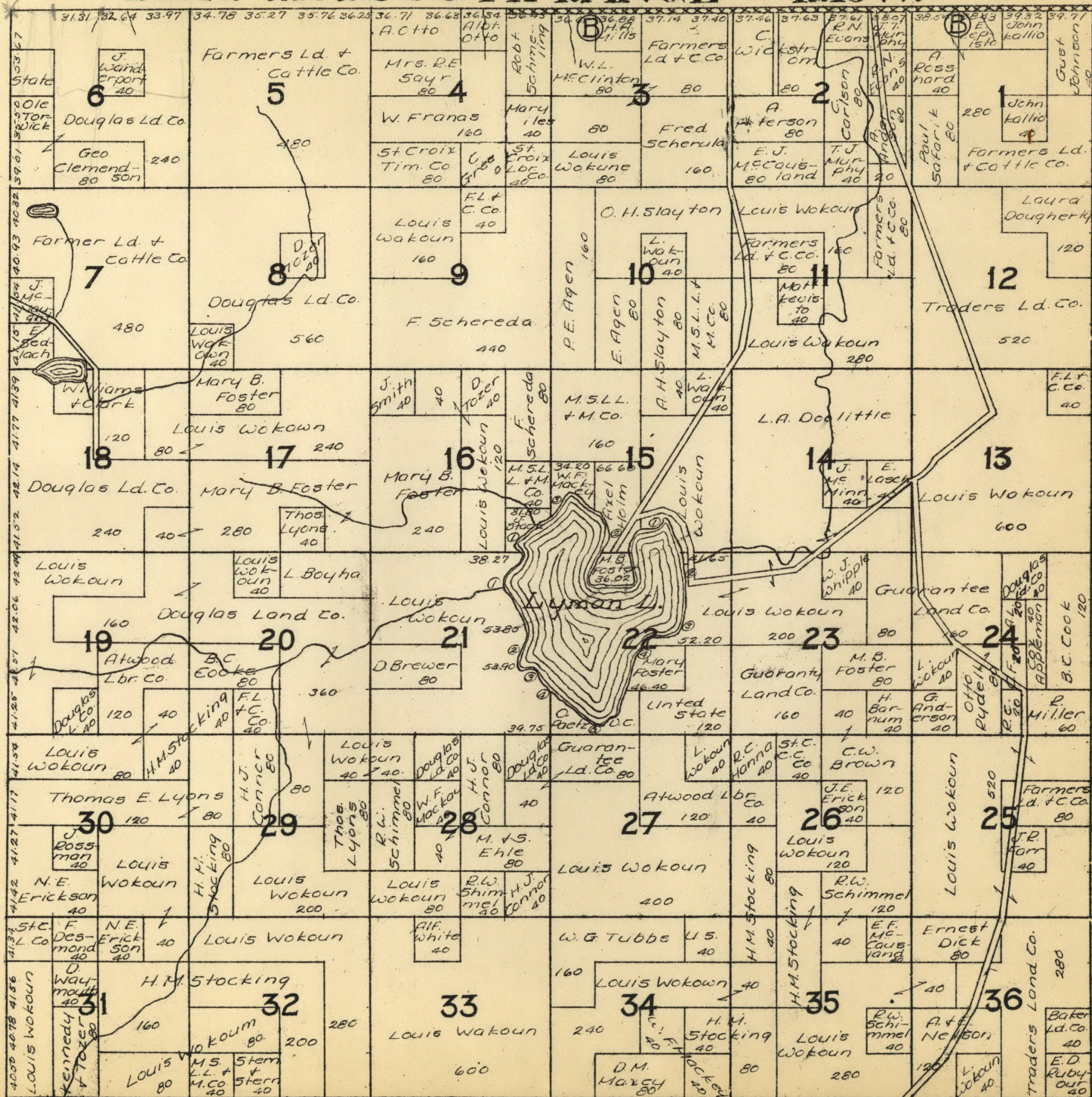
PART OF GORDON

R.13W.



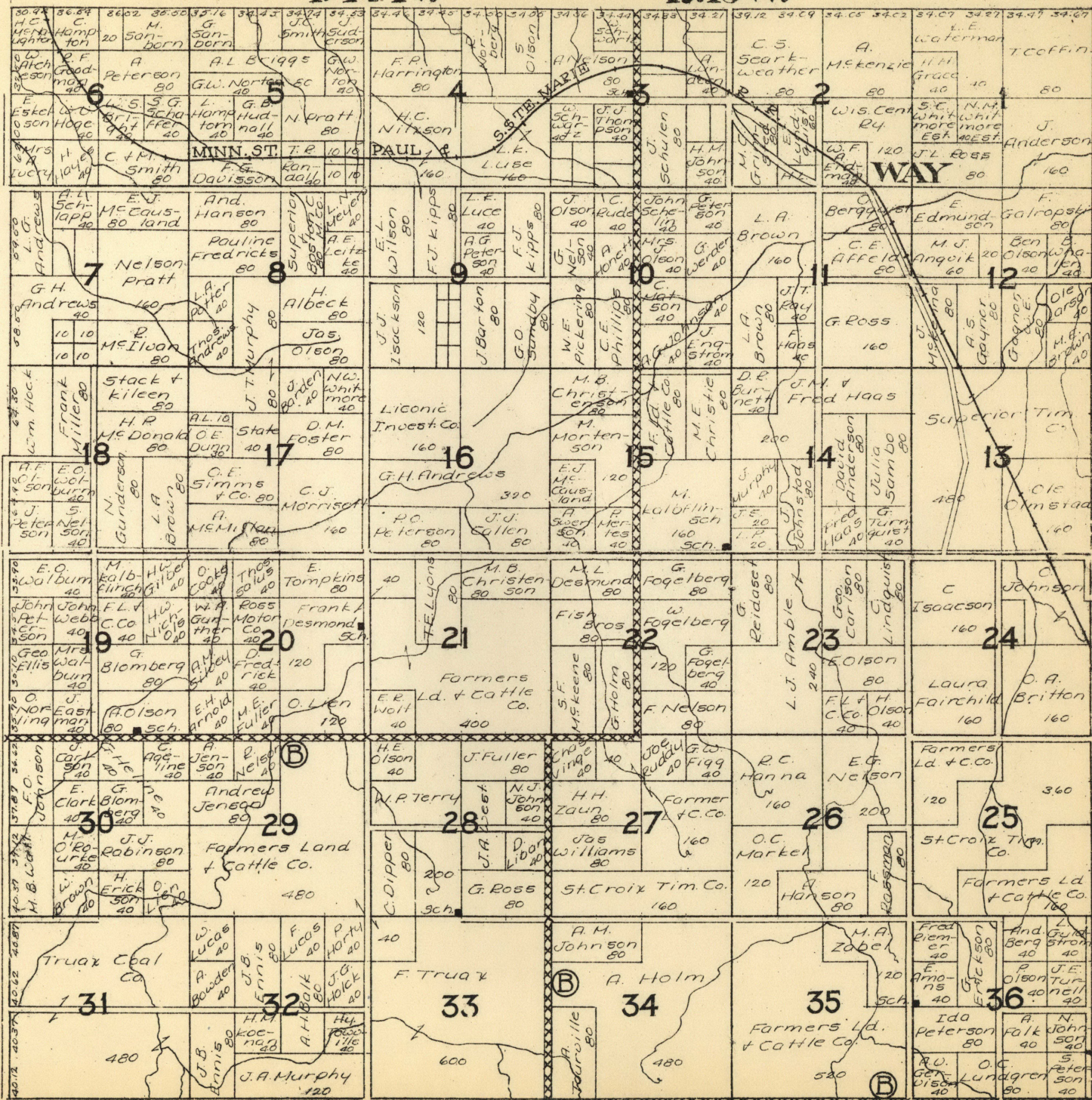


# T.46N. PART OF SOUTH RANGE R.13W.



T.47N.

R.13W.

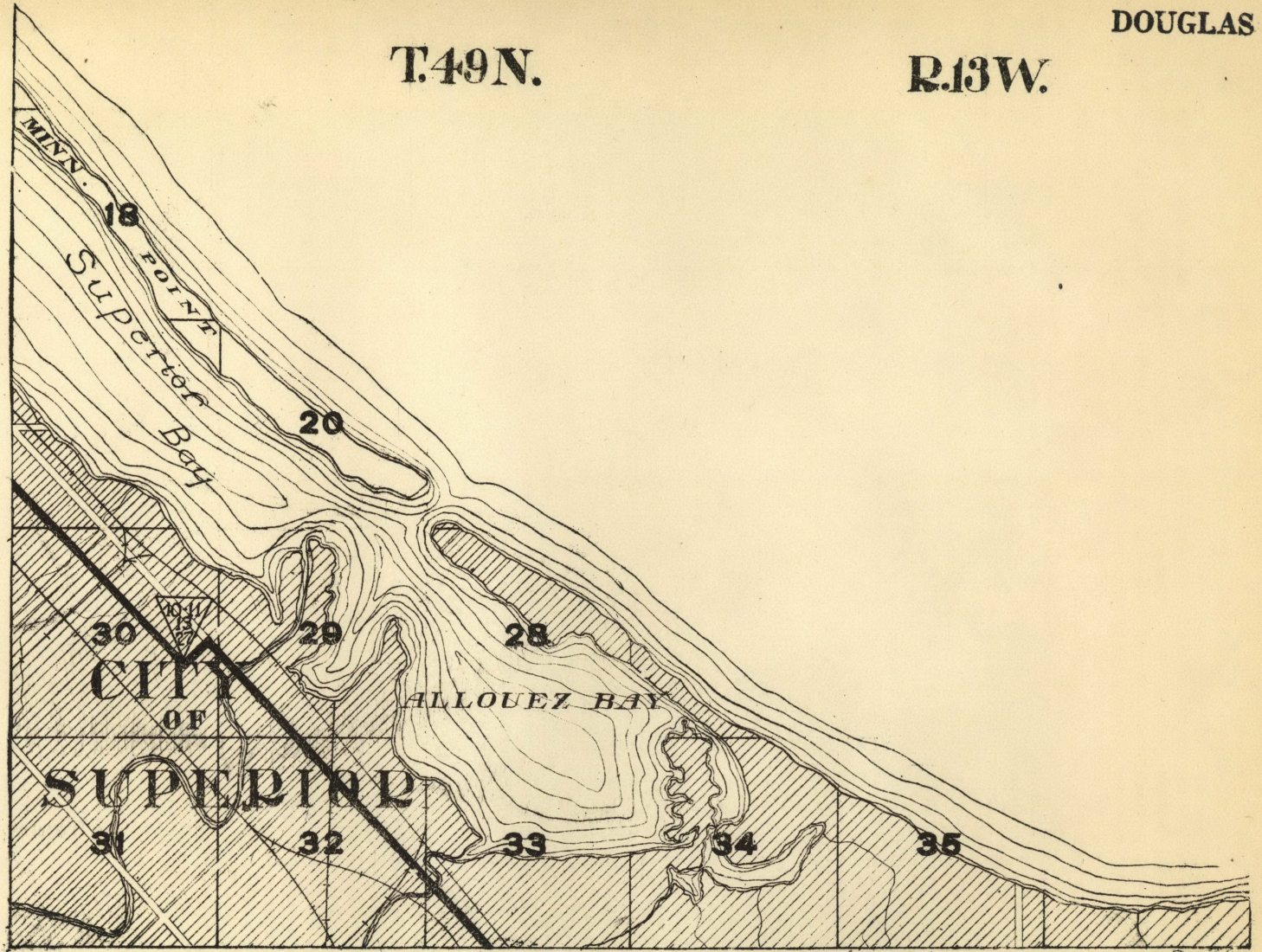




DOUGLAS

T.49N.

R.13W.



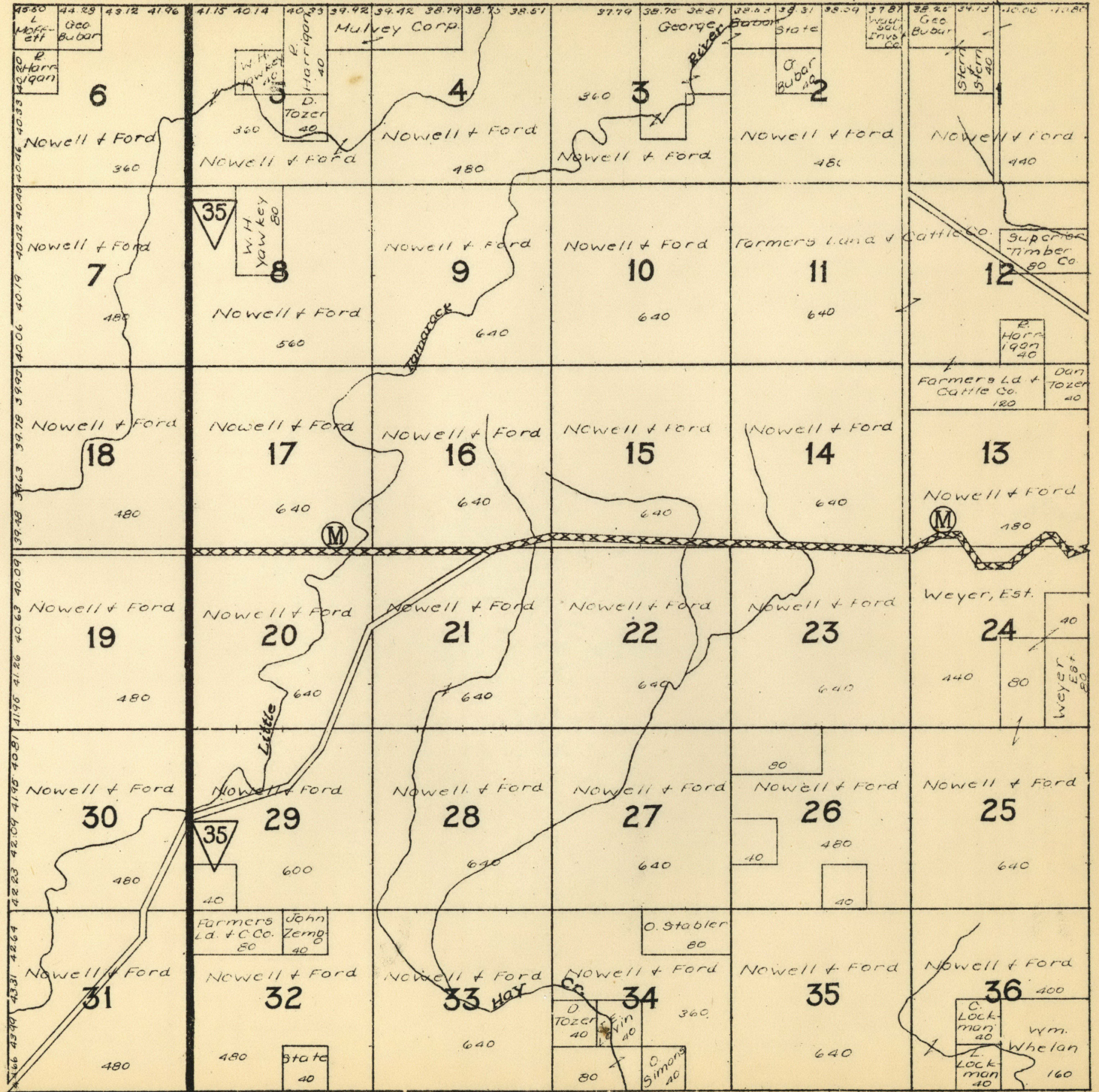
Douglas



T.44N.

PART OF DAIRYLAND

R.14W.

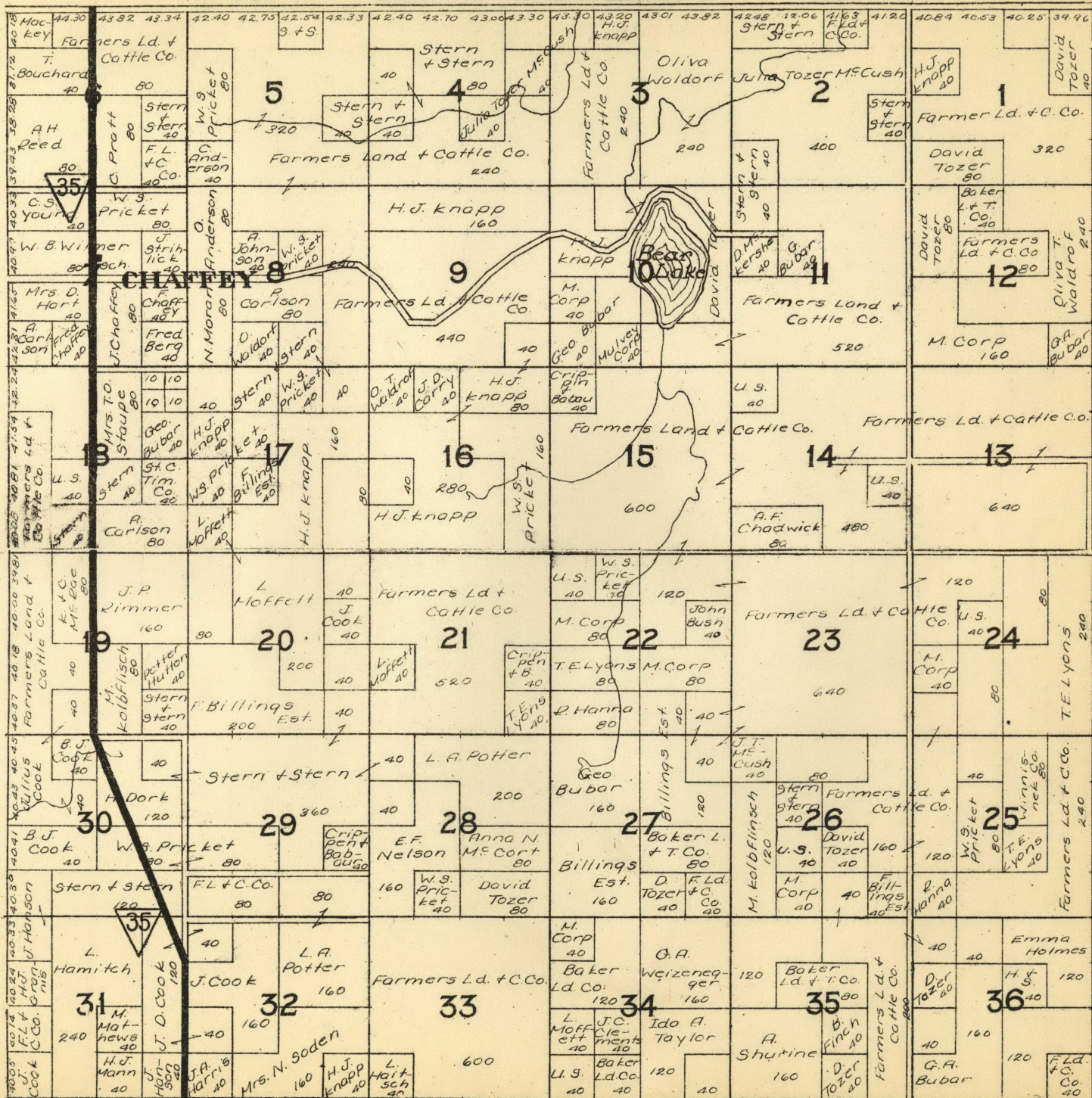




T.45N.

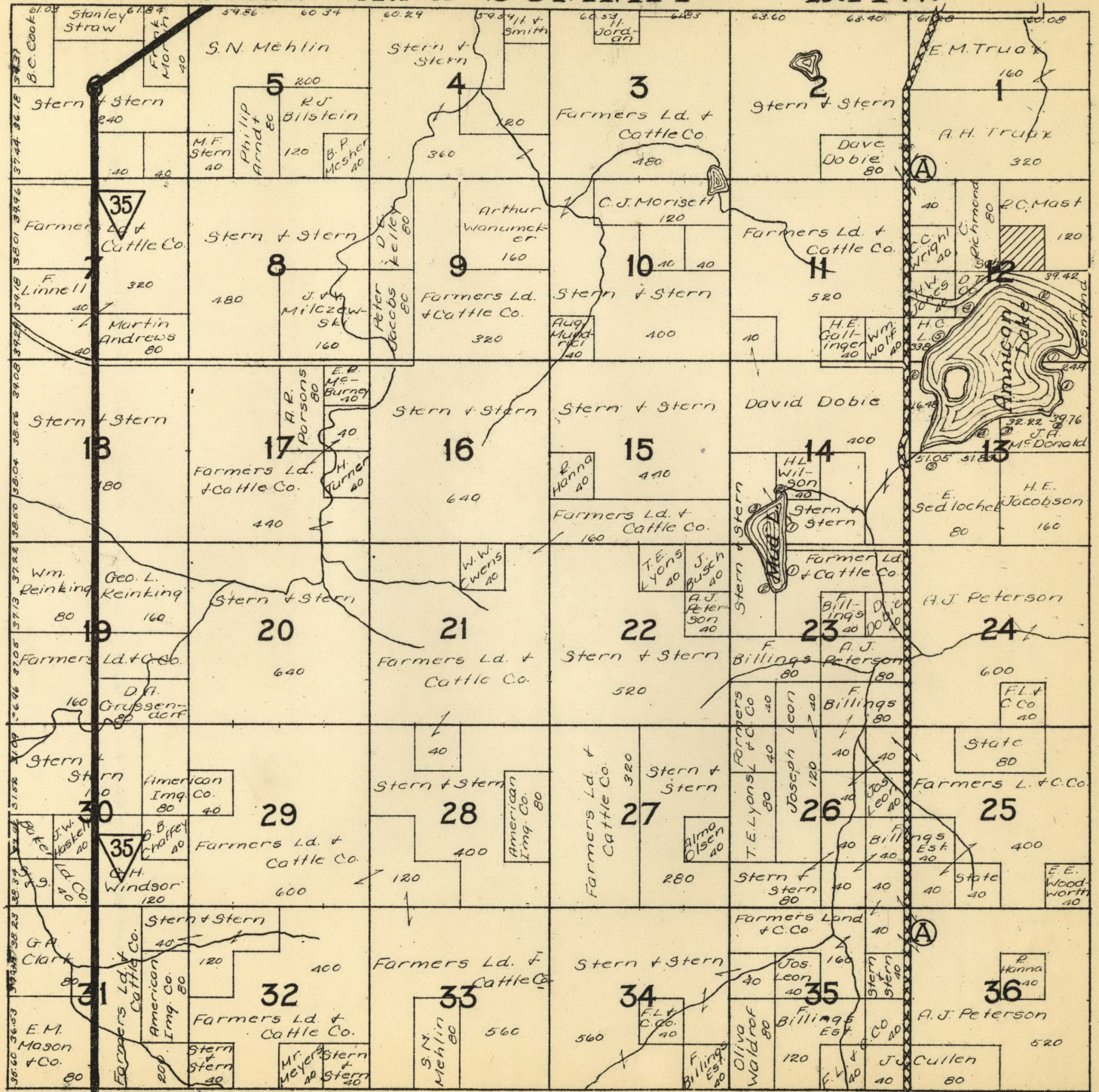
PART OF SUMMIT

R.14W.

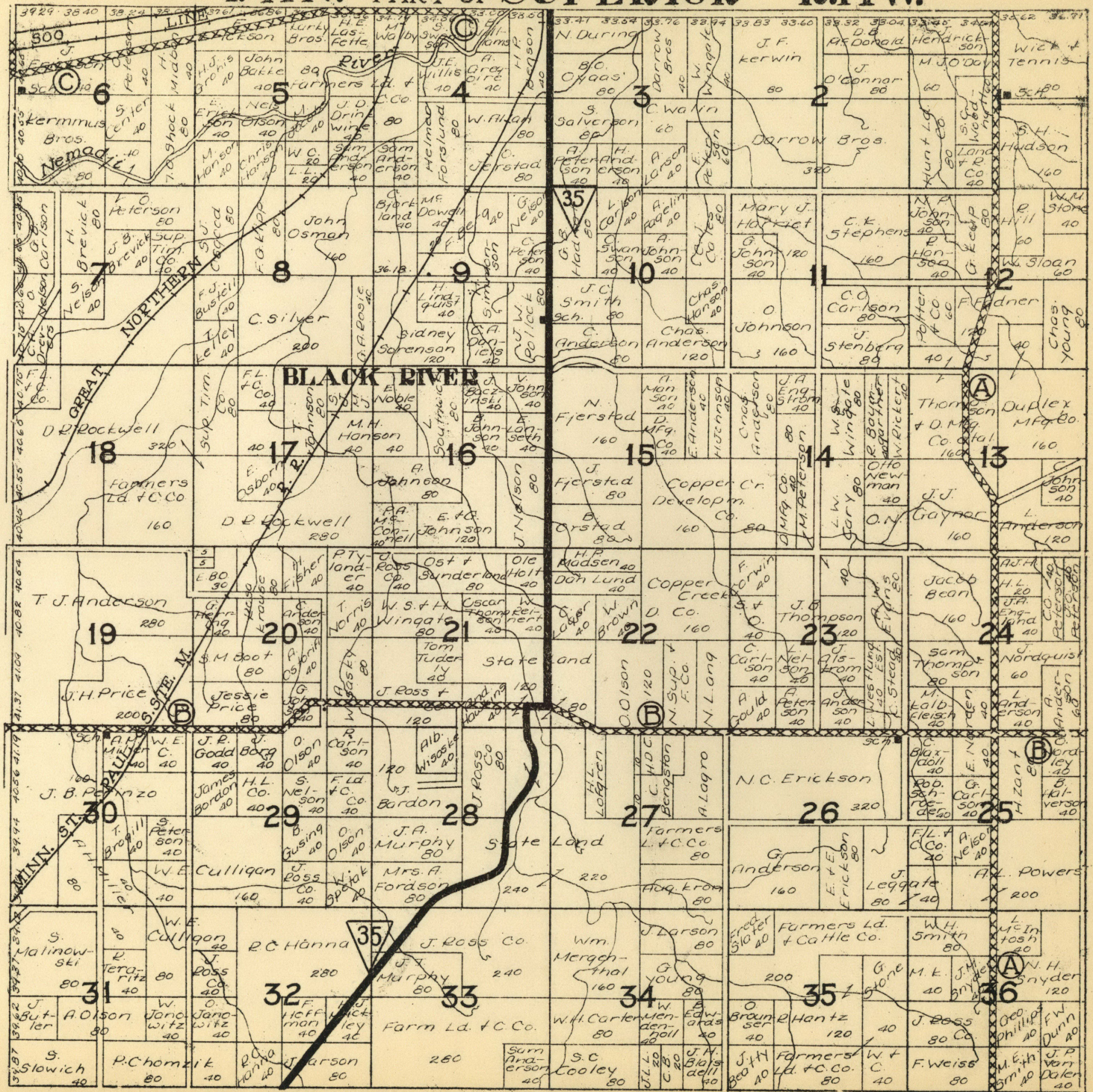


# T.46N. PART OF SUMMIT

# R.14W.



# T.47N. PART OF SUPERIOR R.14W.



T.48N.

PART OF SUPERIOR

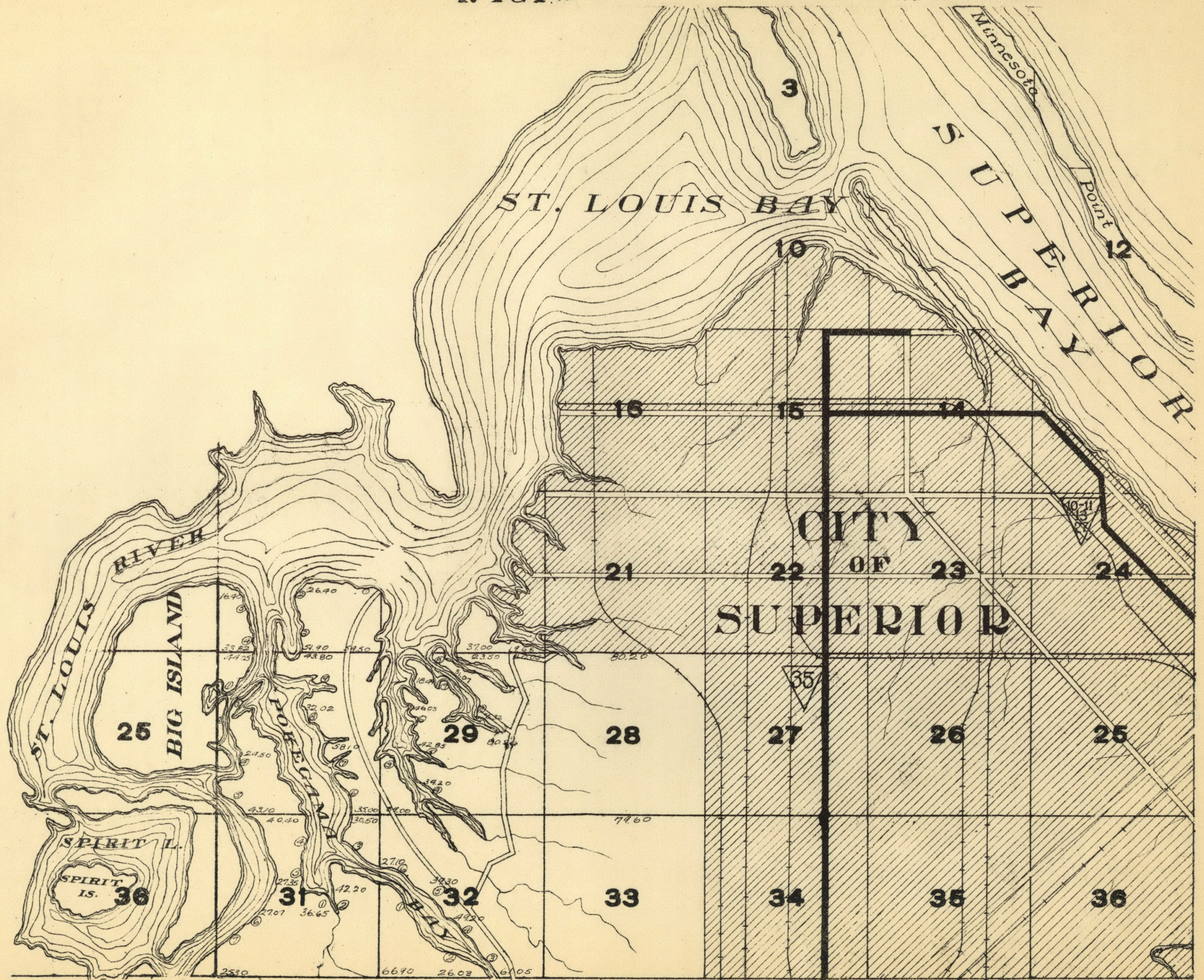
R.14W.

DOUGLAS

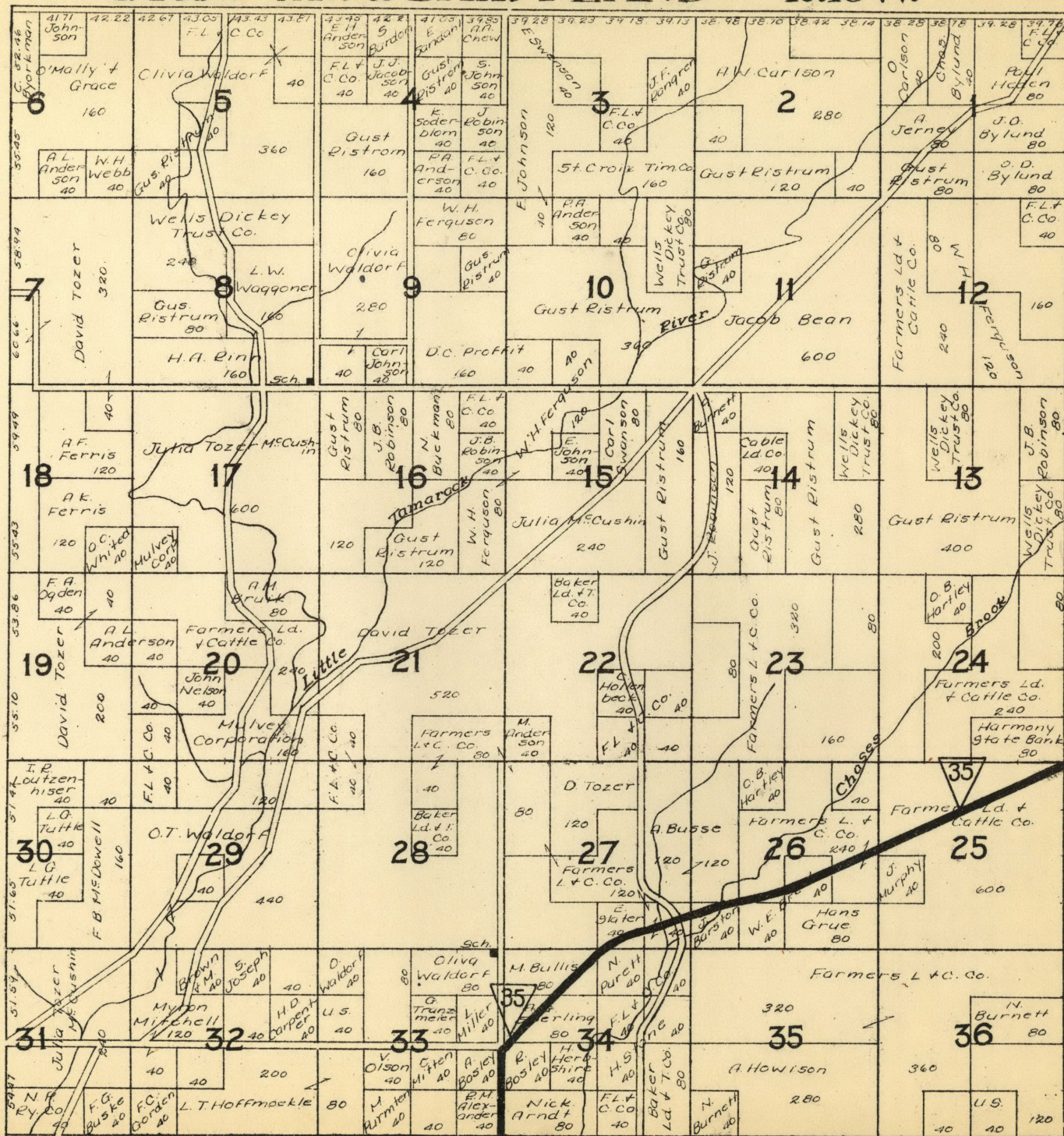


T.49N.

R.14·15 W.

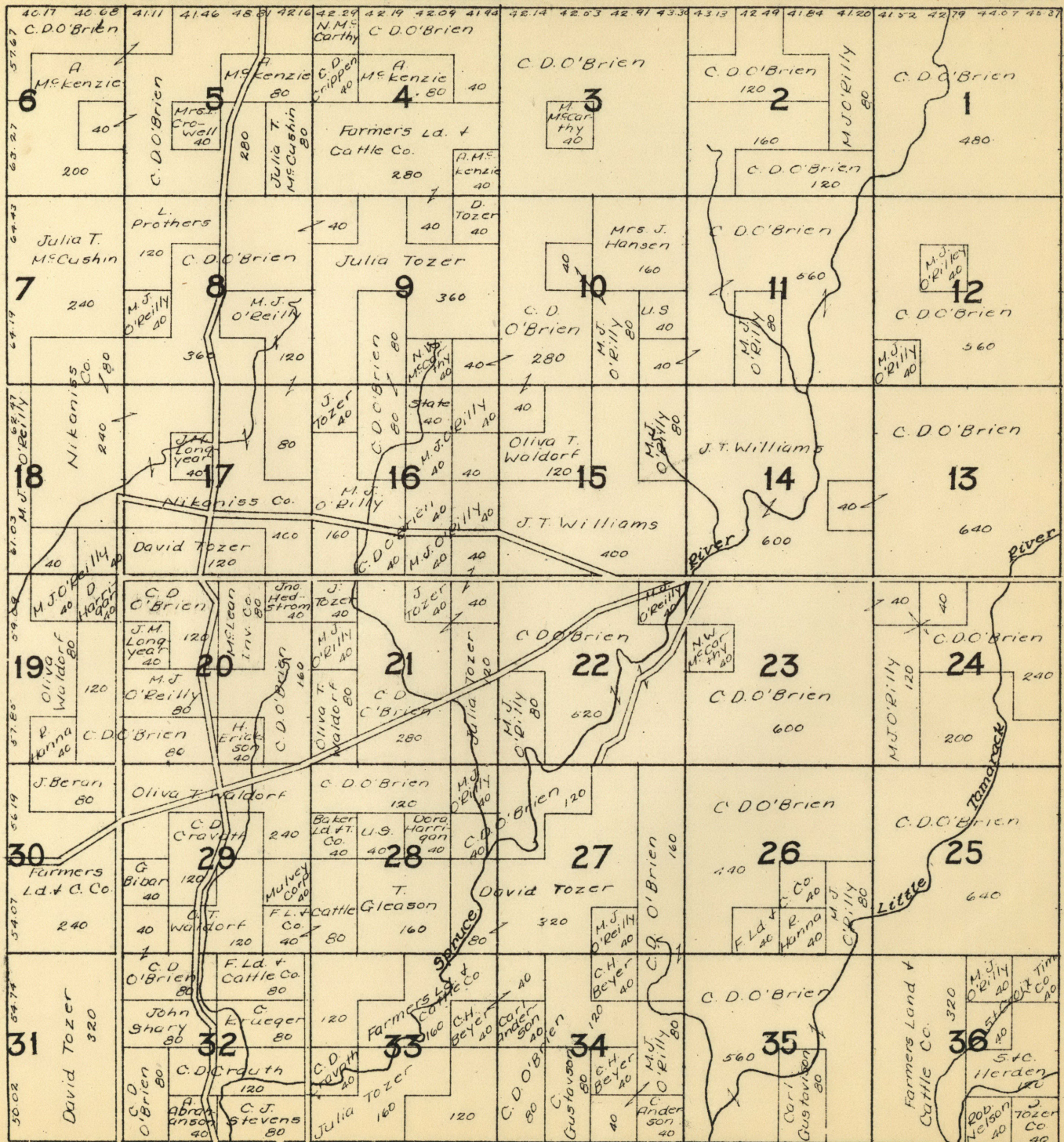


# T.43N. PART OF DAIRYLAND R.15W.



Douglas

T.44N. PART OF DAIRYLAND R.15W. DOUGLAS

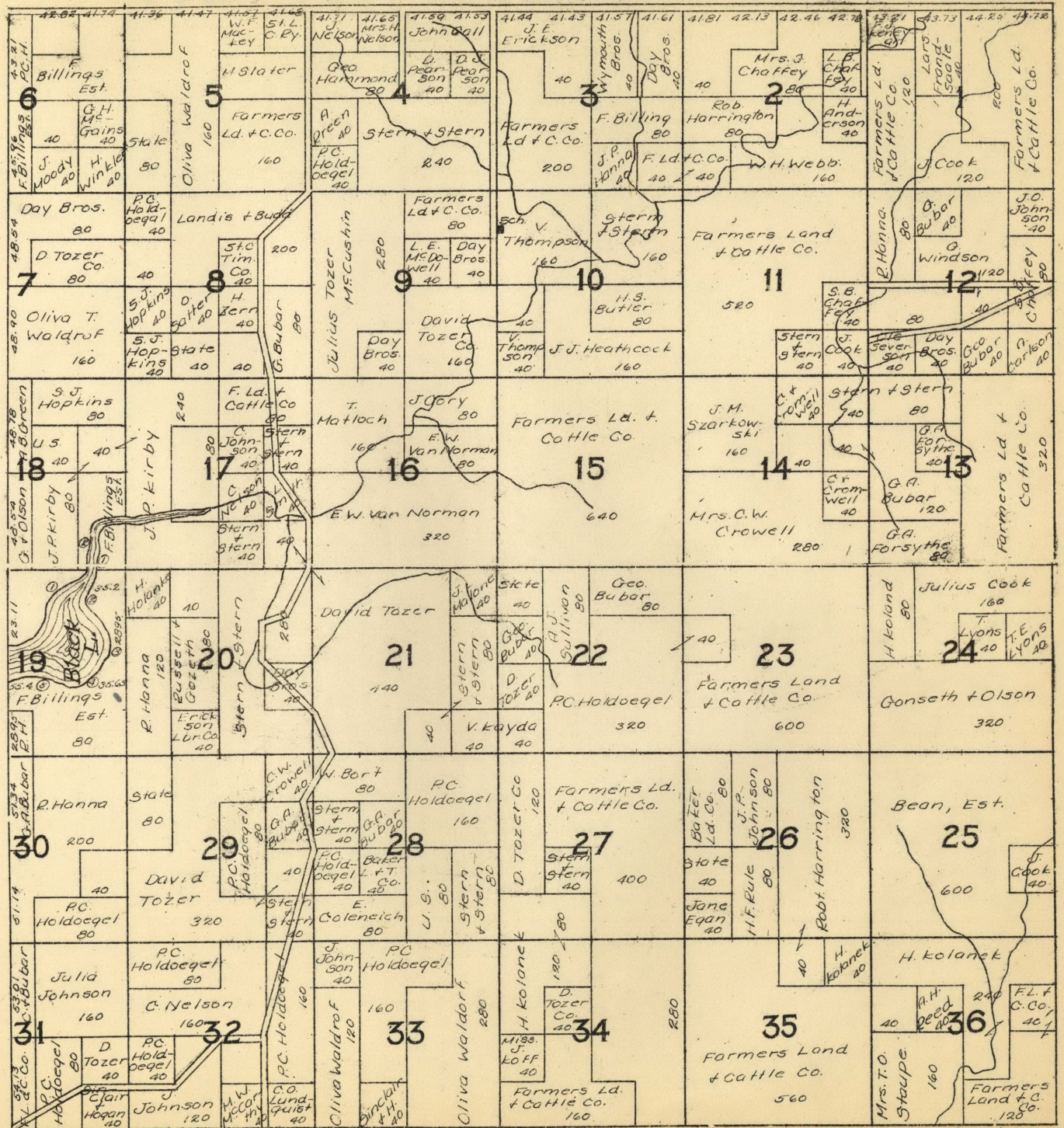


T.45N.

PART OF SUMMIT

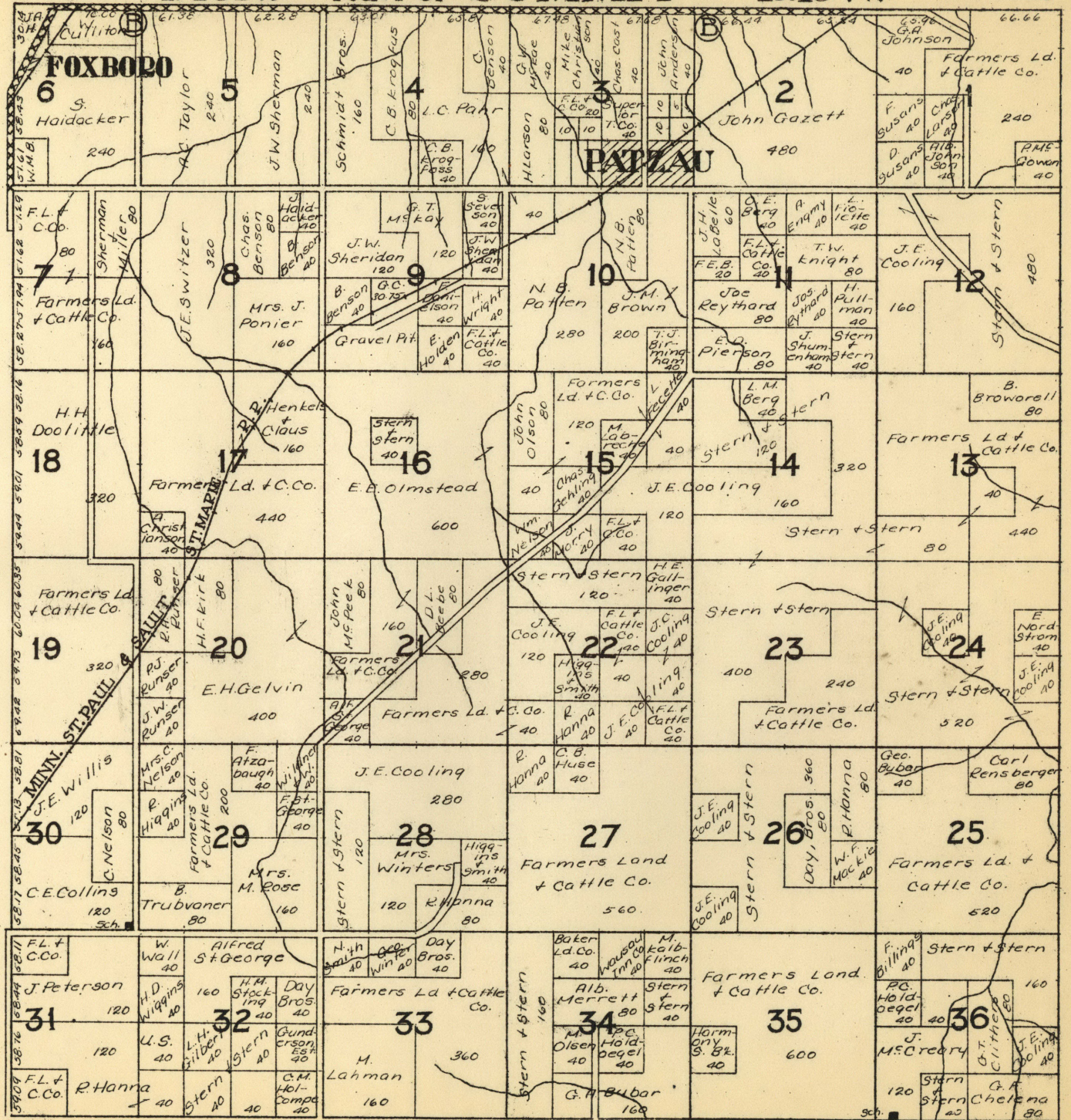
R.15W.

DOUGLAS





T.46N. PART OF SUMMIT R.15W. DOUGLAS



T.47N.

R.15W.

