

*Amel Anderson*

*Issued about 1910*

# PLAT BOOK

OF

## DOUGLAS COUNTY WISCONSIN

*Amel Anderson*

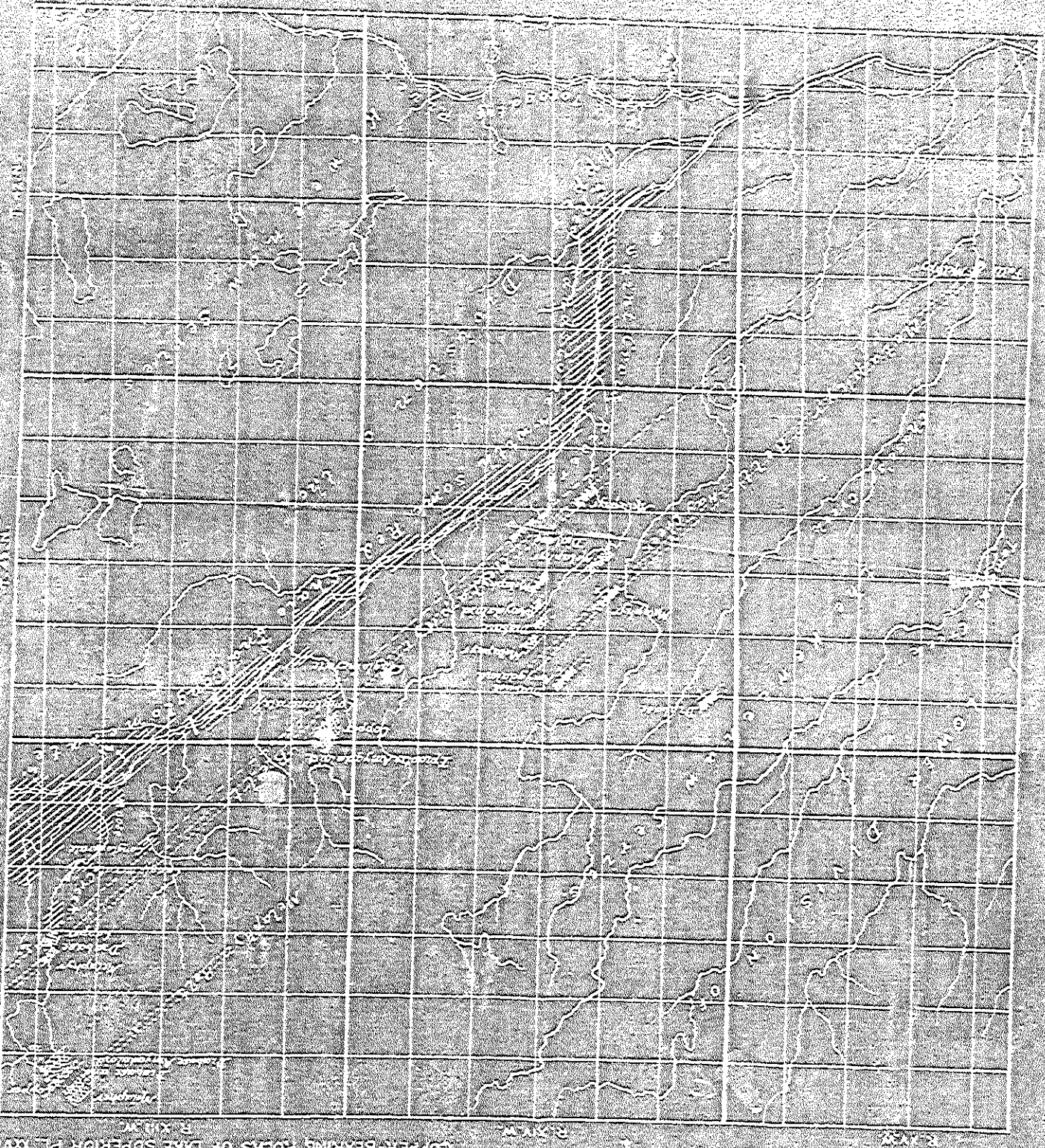
DOUGLAS COUNTY CLERK  
Superior, Wis. 54880

Published by

**W.W. HIXSON & CO.**

Rockford, Illinois

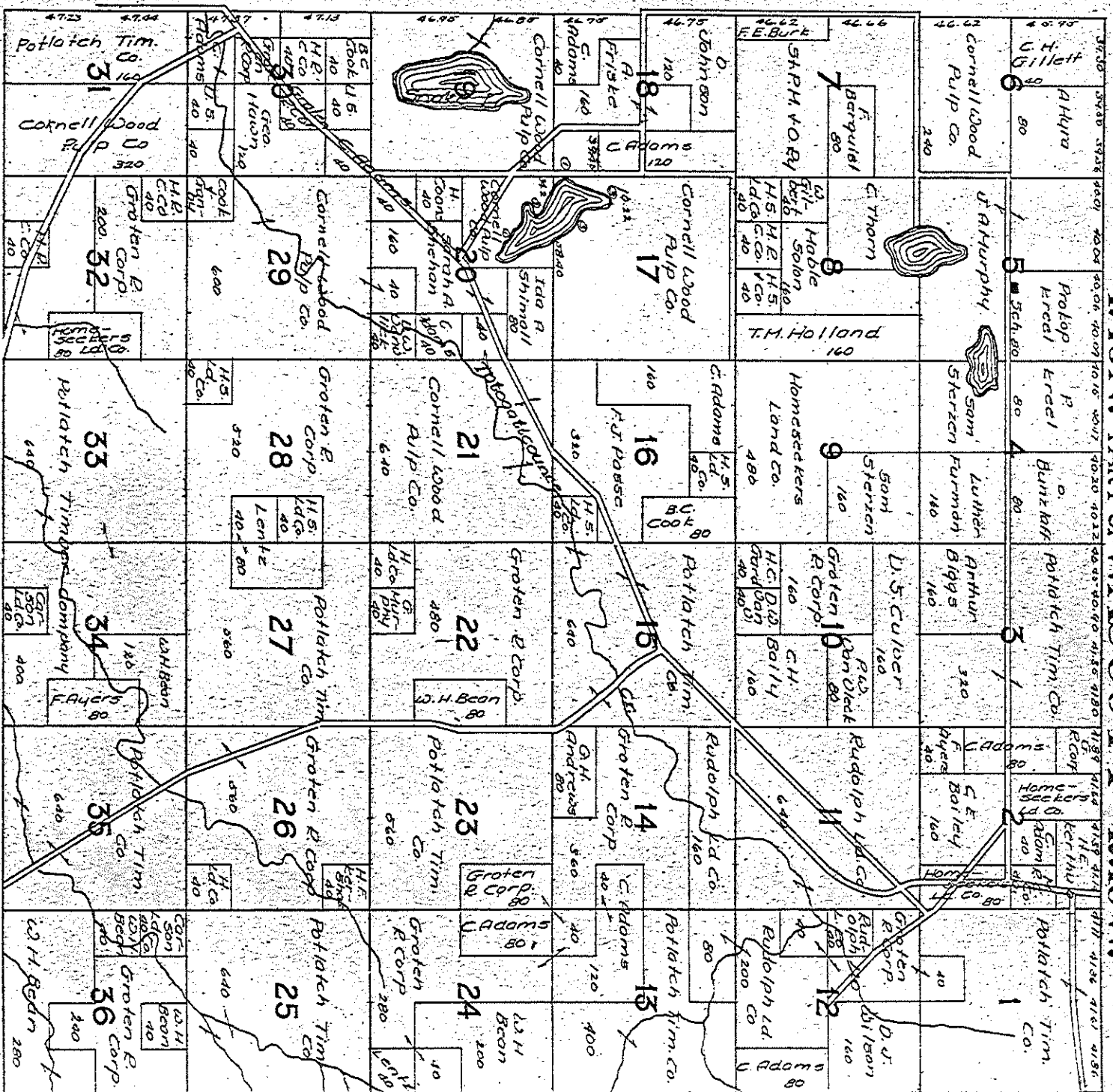
U.S. GEOLOGICAL SURVEY  
BUREAU OF GEOLOGICAL SURVEY  
WASHINGTON, D. C.



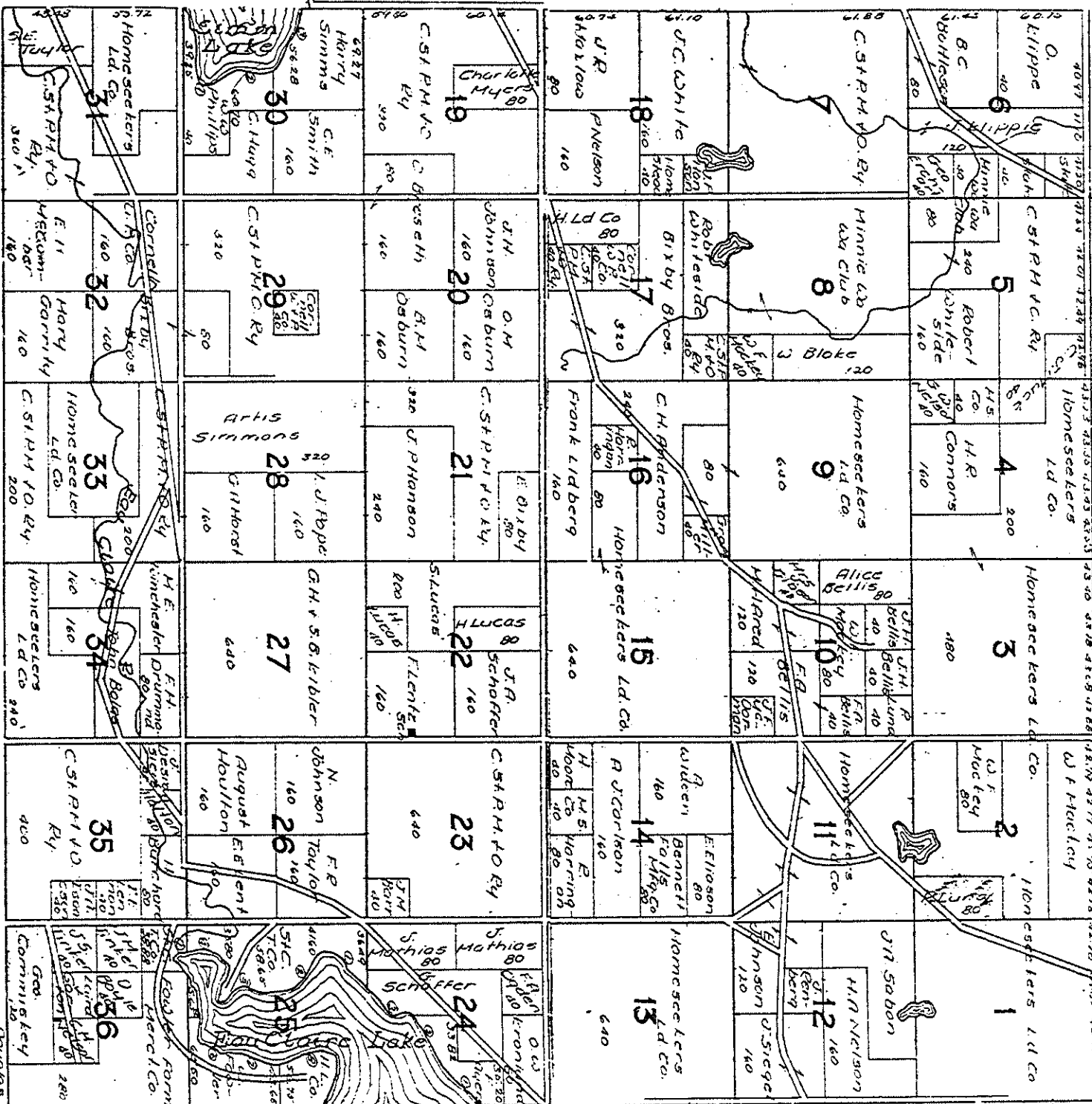
COOPER-BEARING FORMS OF LAKE SUPERIOR PL. NO. 100

UNITED STATES GEOLOGICAL SURVEY

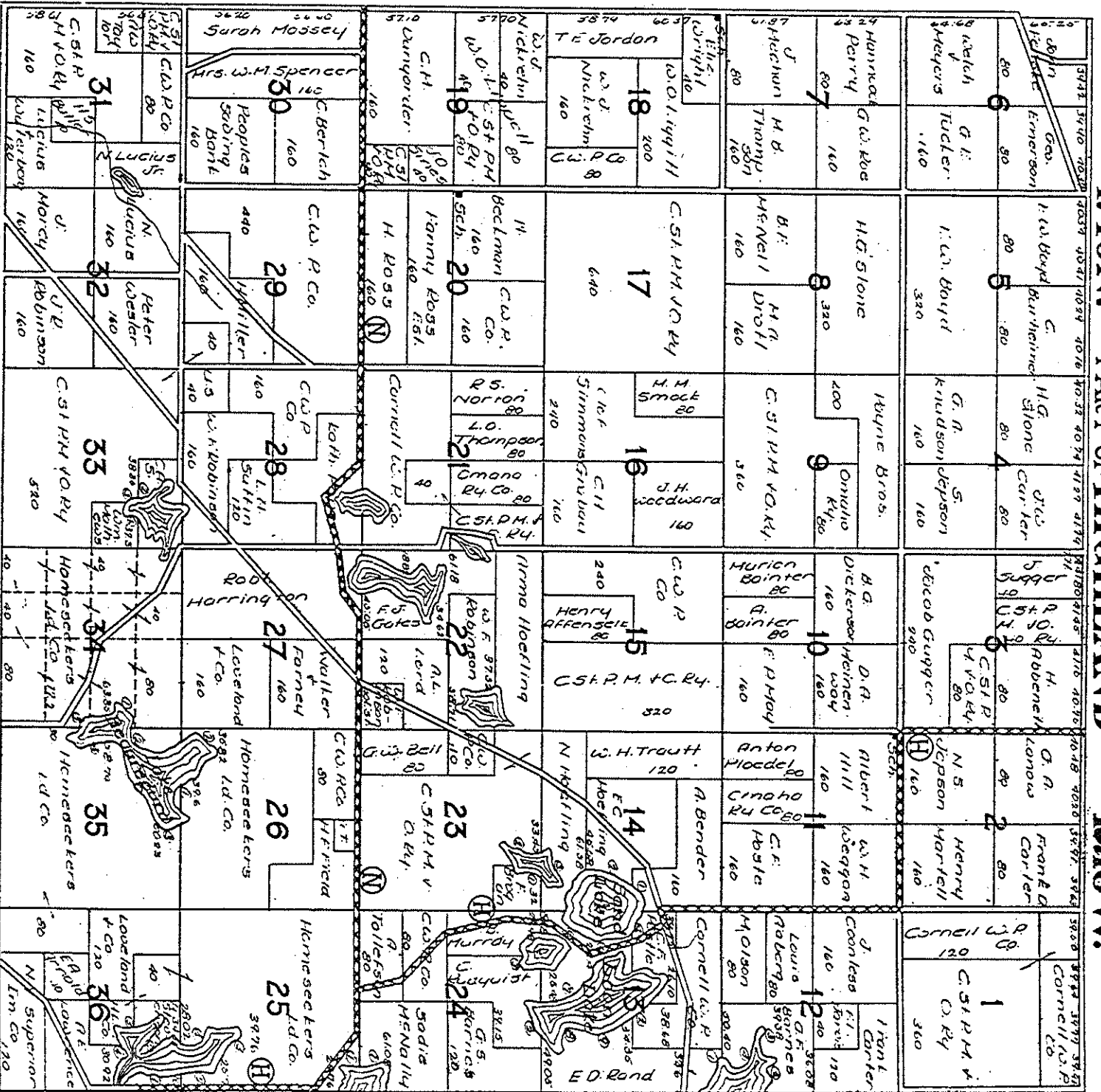
# T43N. PART OF WASCOTT P.10W.



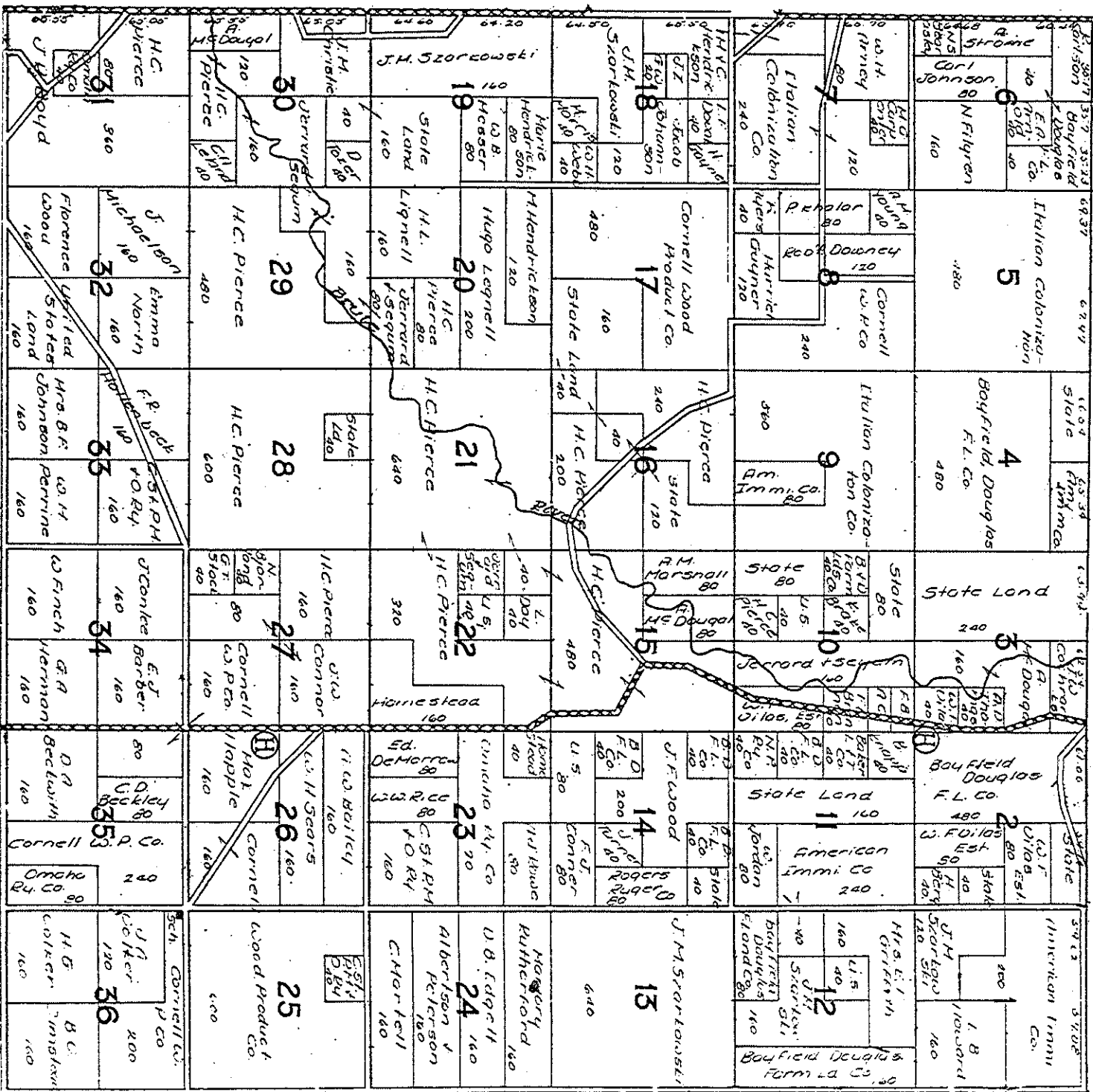
Wascott - Douglas



T45N. PART OF HIGHLAND PL01W. 3



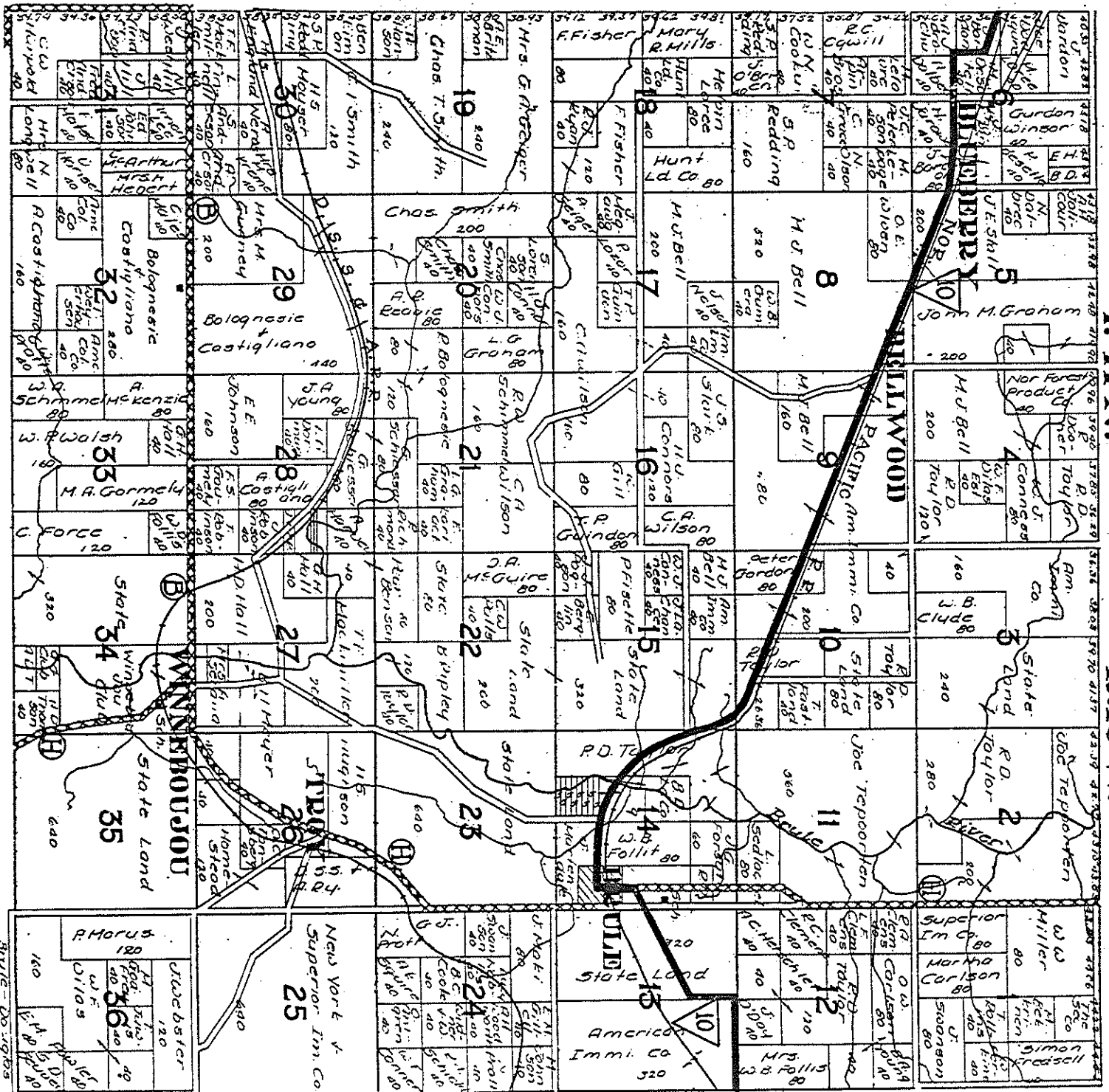
# T.16N. PART OF HIGHLAND P.10W. 4



T.47N.

R.10W.

DOUGLAS

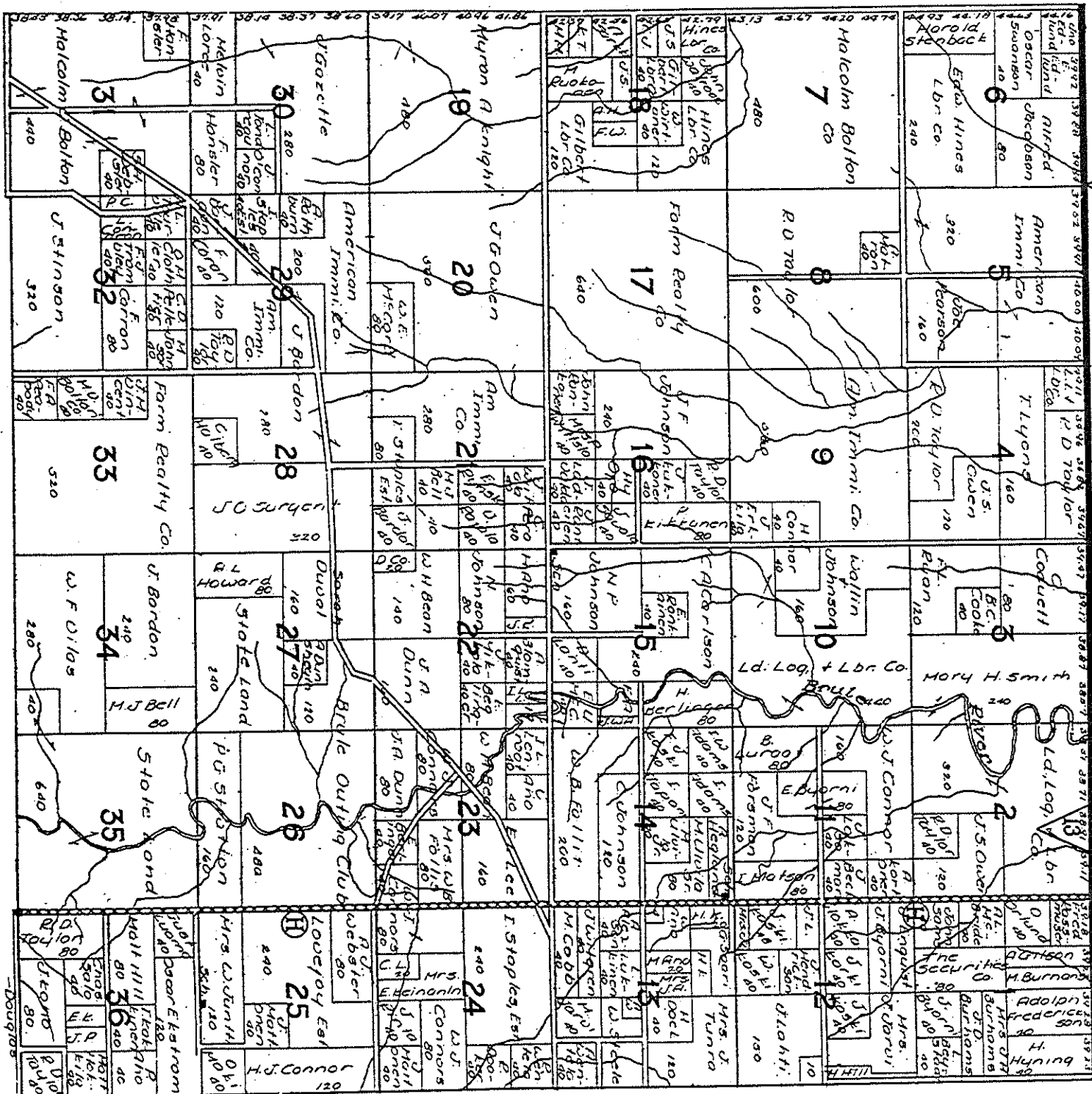


Spalte - 20 19 18 17 16 15 14 13 12 11 10 9 8 7 6 5 4 3 2 1

13

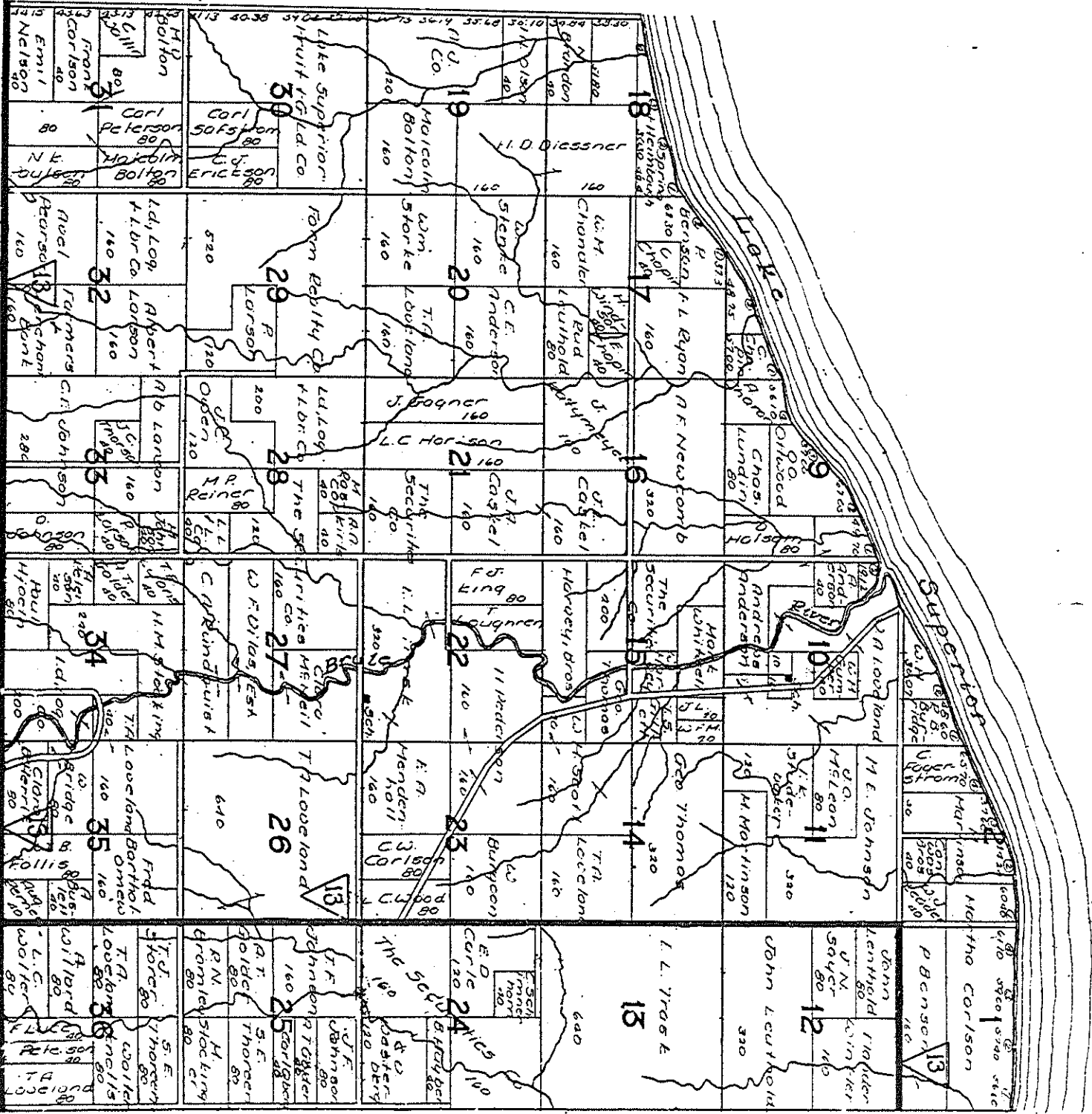
T48N.

R10W.



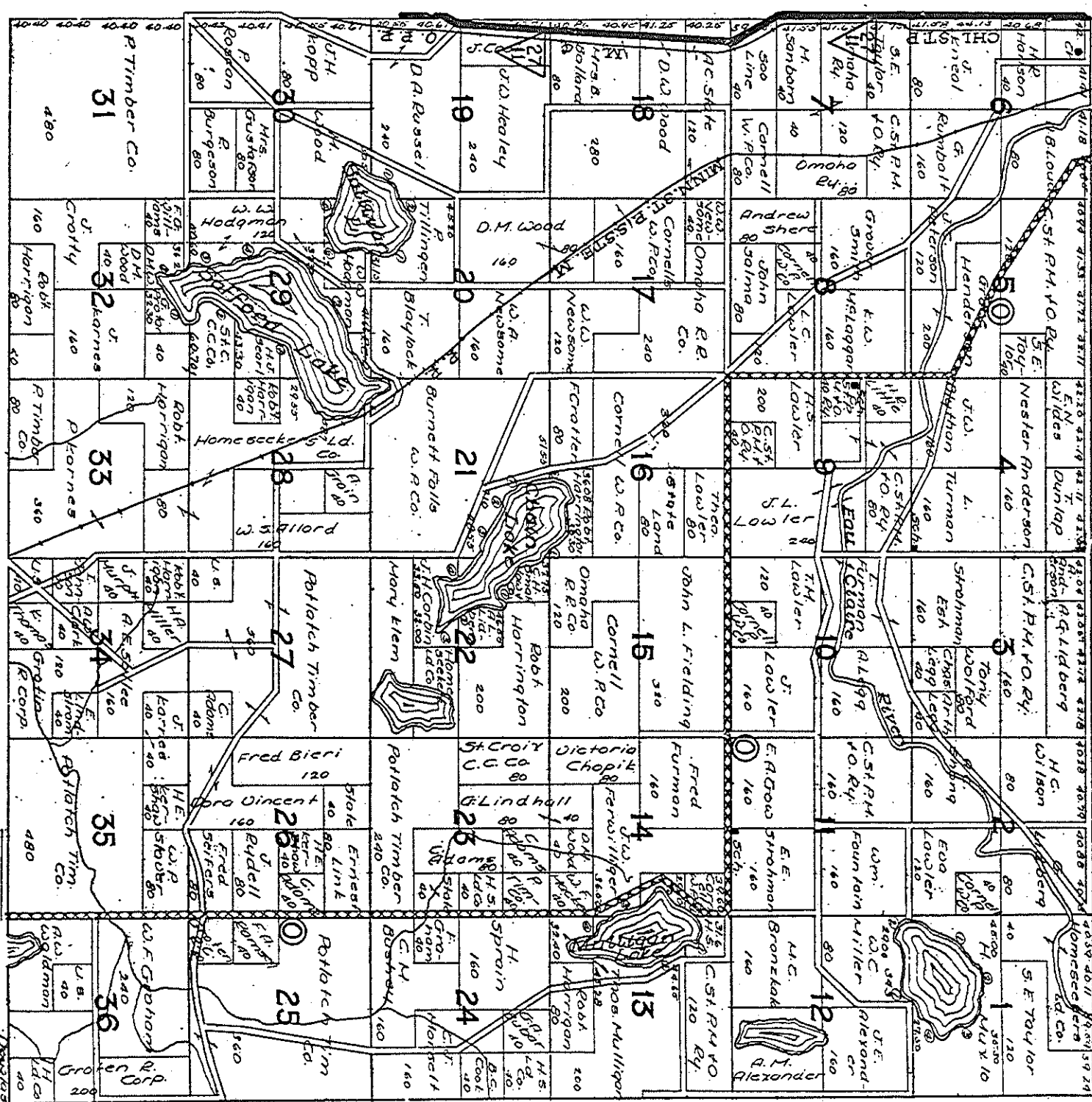


# T. 49N. PART OF CLOVELAND P. 10W.

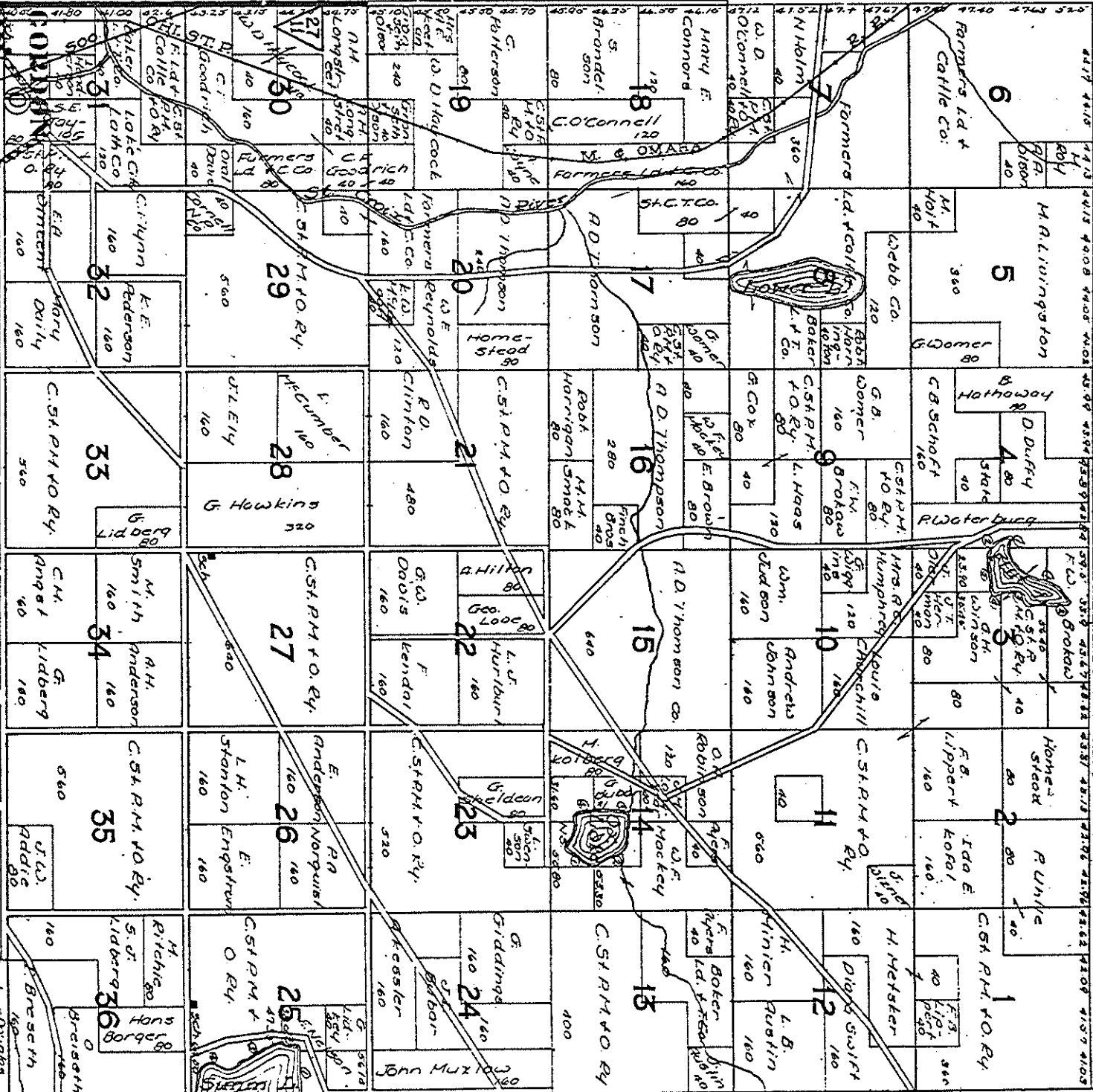


T43N.

R.1W.



# T.M.N. PART OF GORDON P.M.W.



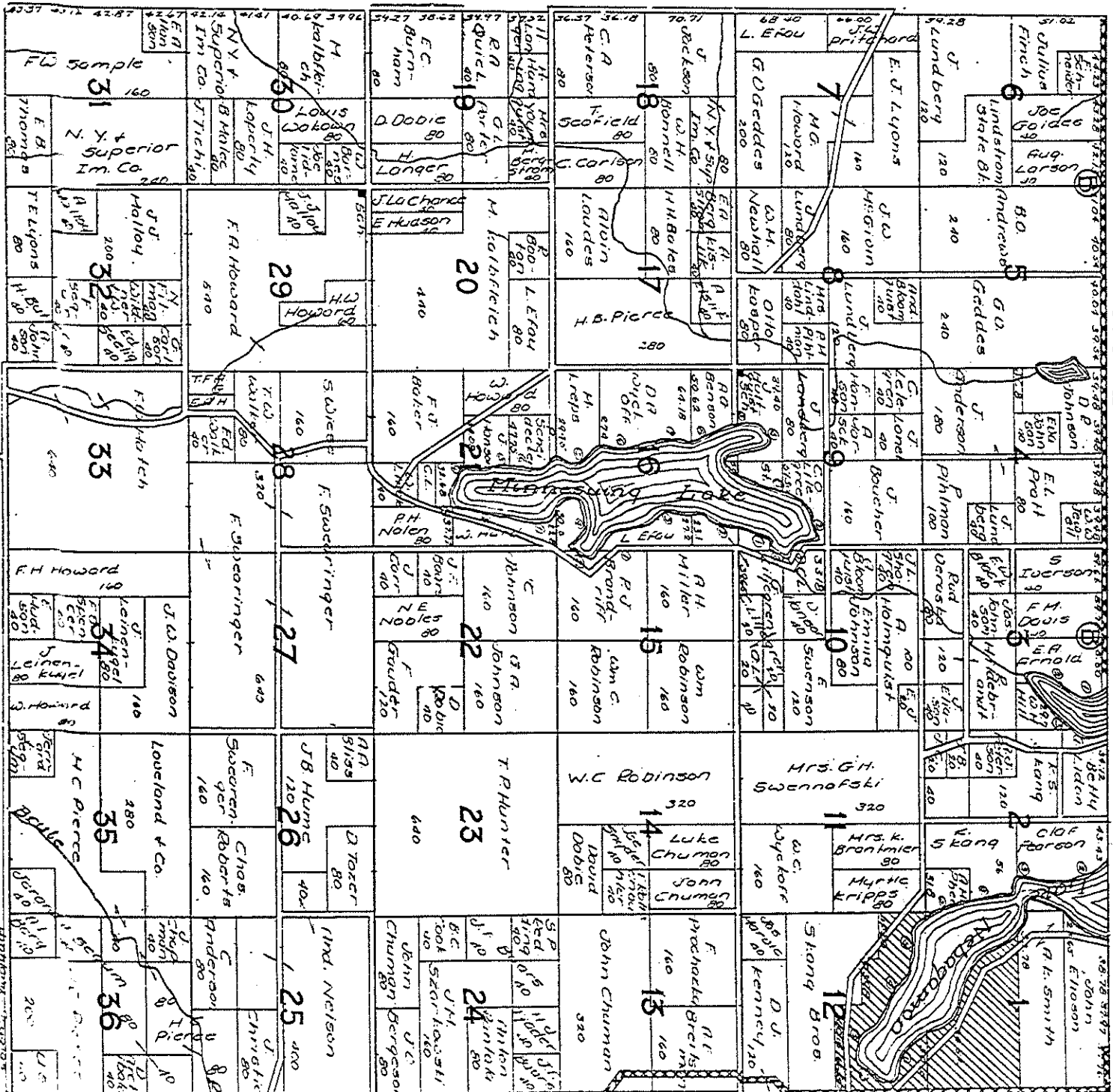
Gordon - Dr. 9/185



T16N.

R1W.

DOUGLAS



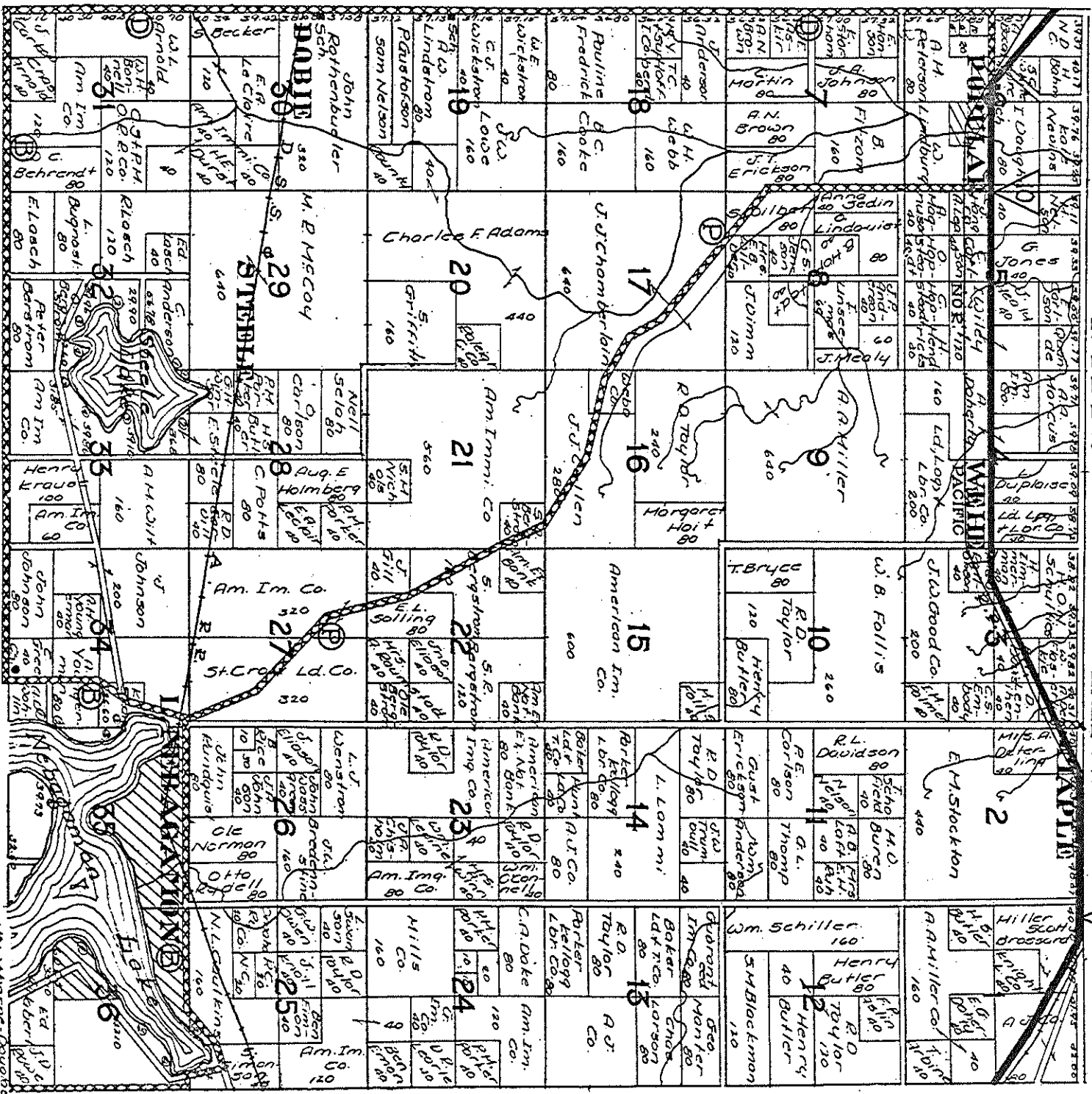
Highway 100

T12N.

R11W.

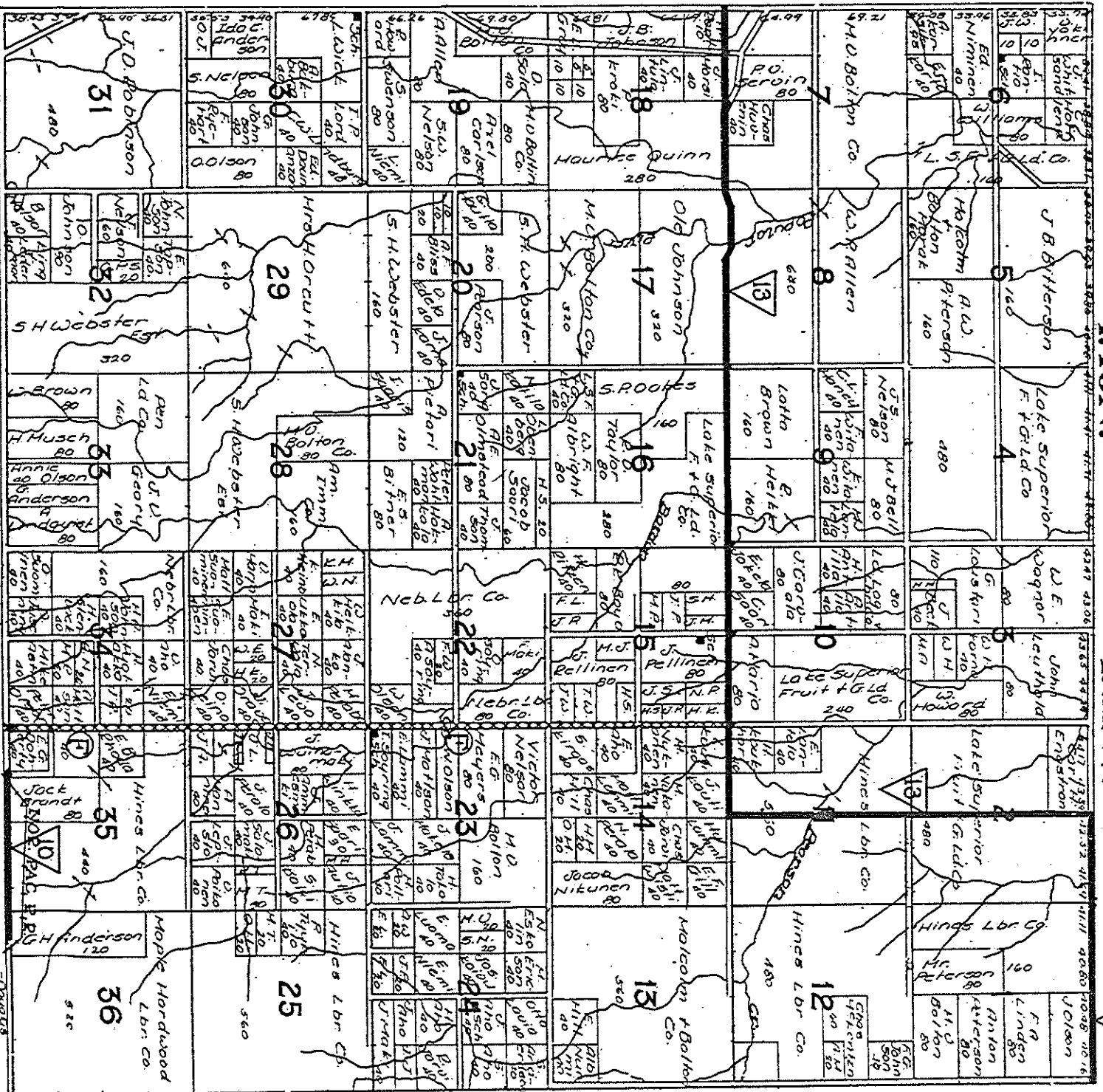
10

12



T48N.

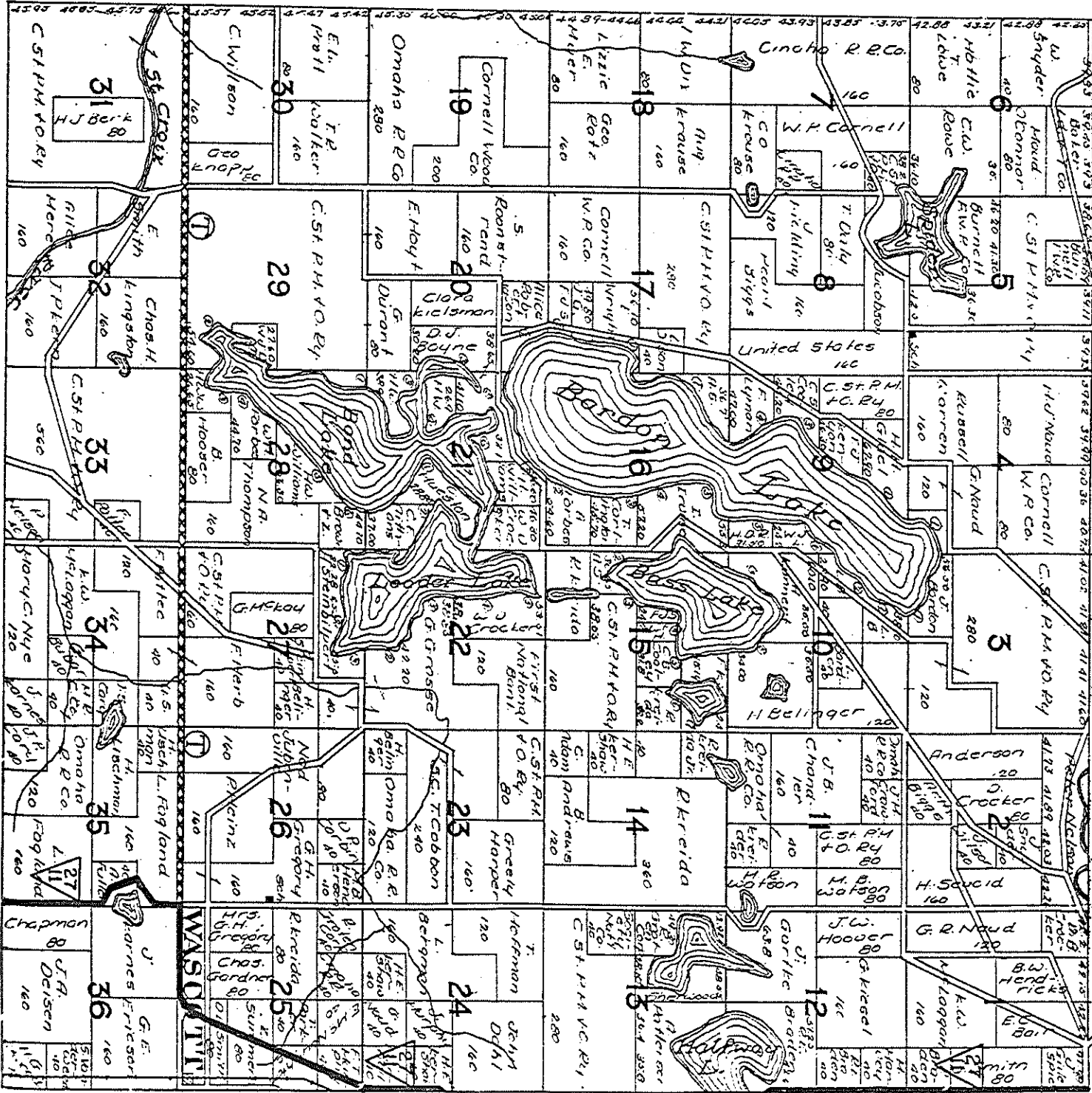
R.1W.





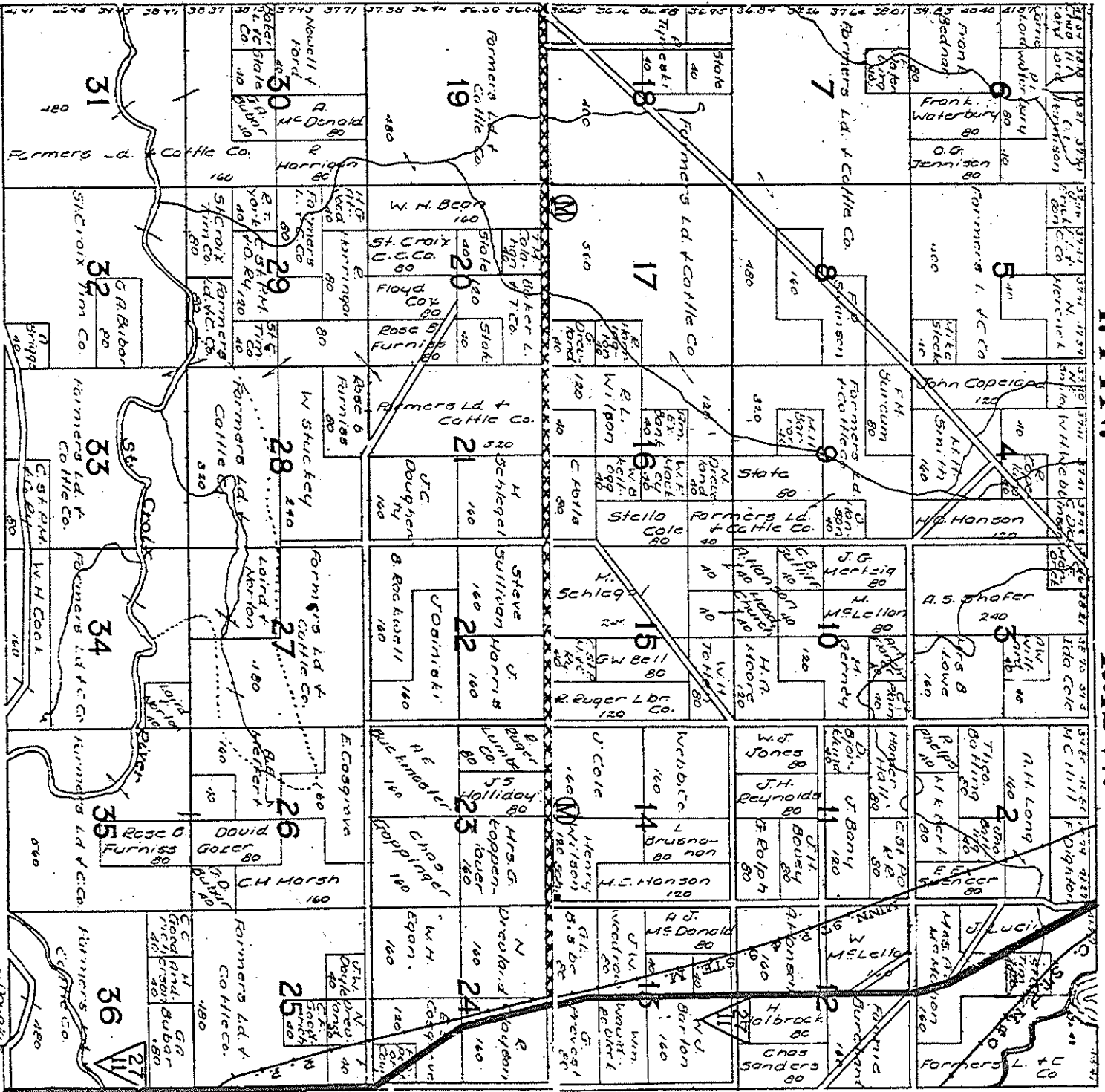


T43N. R.12W. DOUGLAS 15



T144N.

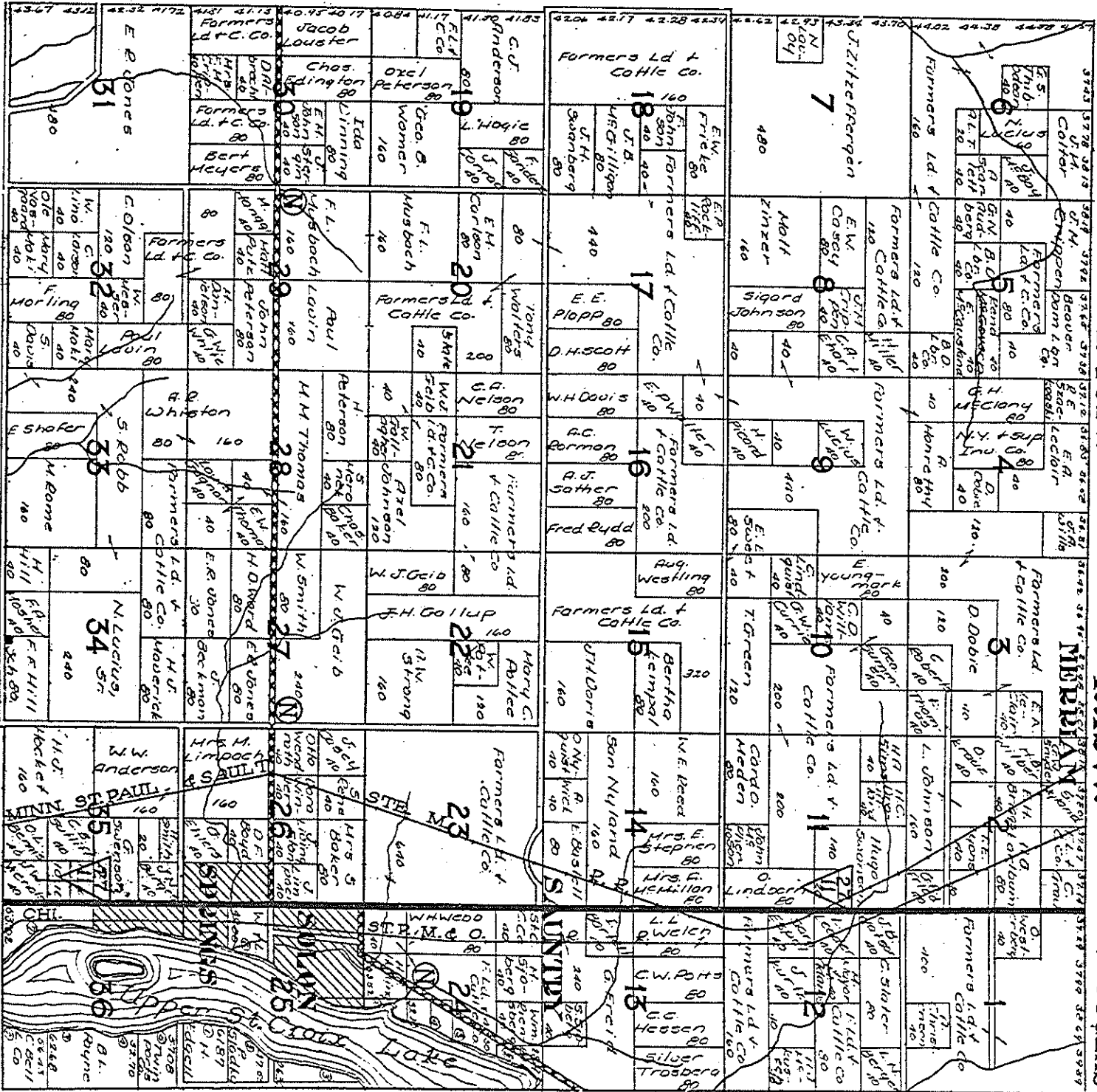
R.12W.



T.45N.

R.12W.

DOUGLAS

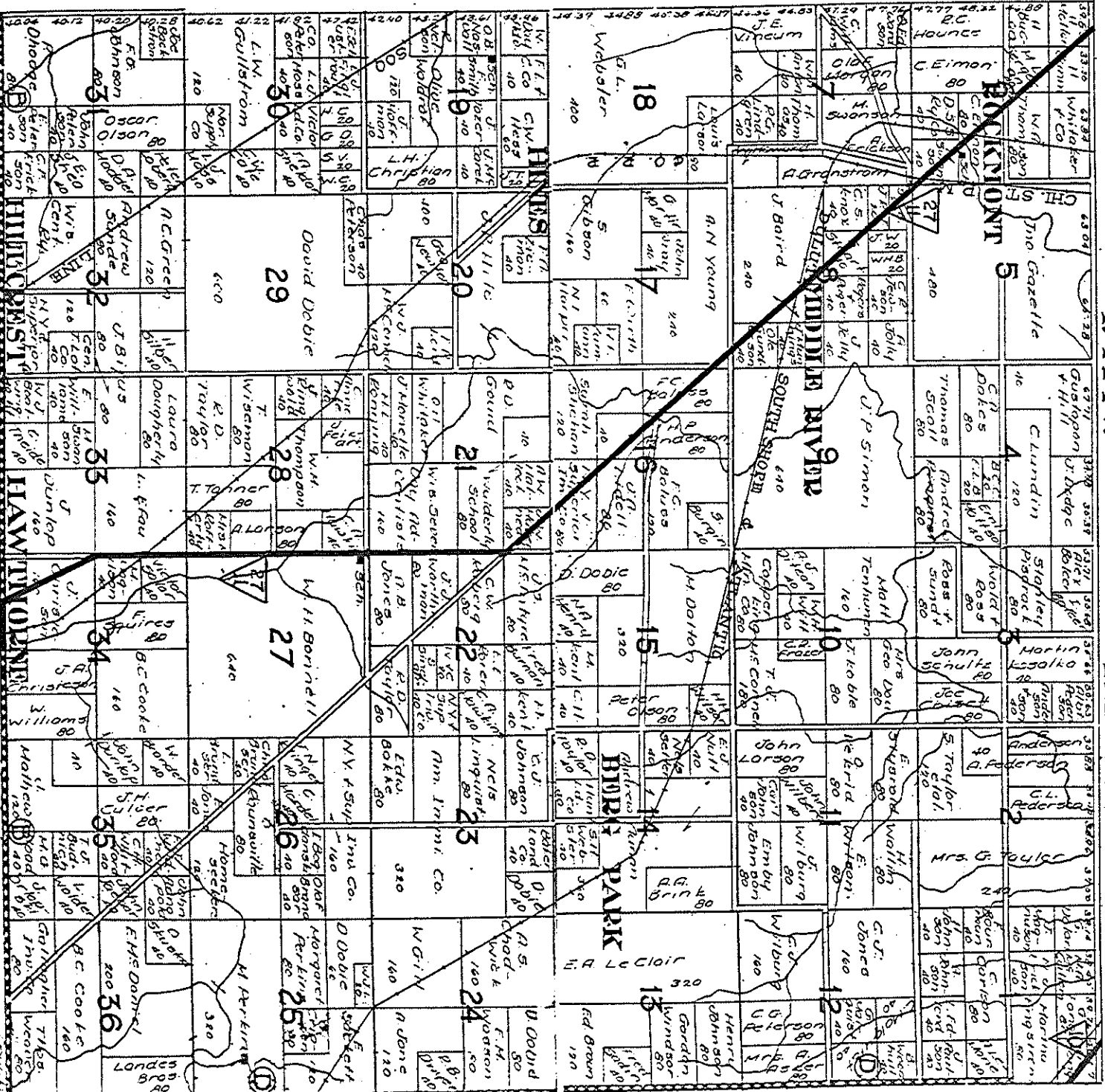


Copyright

T16N.

R12W.

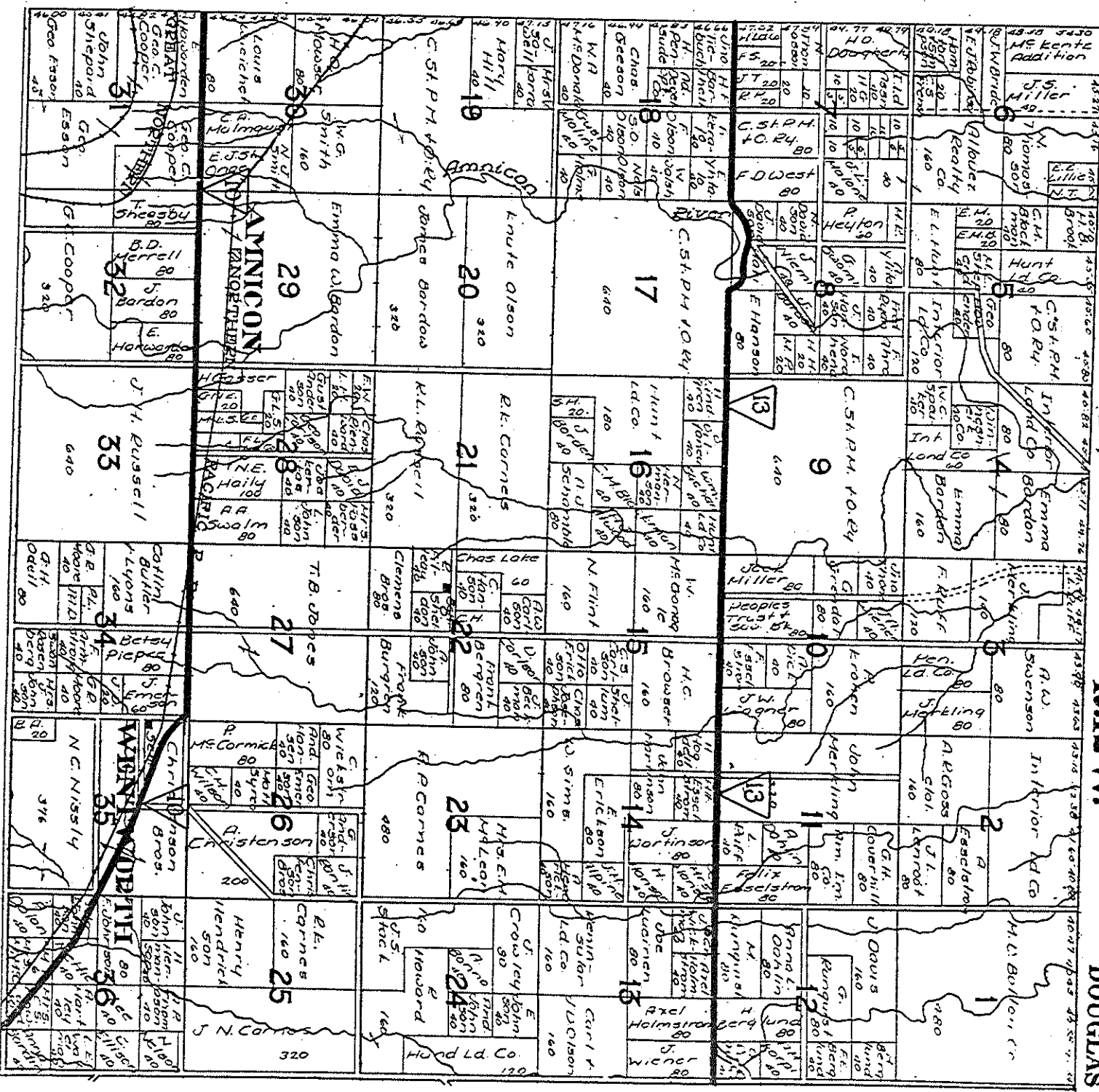
30	31	32	33	34	35	36
37	38	39	40	41	42	43
44	45	46	47	48	49	50
51	52	53	54	55	56	57
58	59	60	61	62	63	64
65	66	67	68	69	70	71
72	73	74	75	76	77	78
79	80	81	82	83	84	85
86	87	88	89	90	91	92
93	94	95	96	97	98	99
100	101	102	103	104	105	106
107	108	109	110	111	112	113
114	115	116	117	118	119	120
121	122	123	124	125	126	127
128	129	130	131	132	133	134
135	136	137	138	139	140	141
142	143	144	145	146	147	148
149	150	151	152	153	154	155
156	157	158	159	160	161	162
163	164	165	166	167	168	169
170	171	172	173	174	175	176
177	178	179	180	181	182	183
184	185	186	187	188	189	190
191	192	193	194	195	196	197
198	199	200	201	202	203	204
205	206	207	208	209	210	211
212	213	214	215	216	217	218
219	220	221	222	223	224	225
226	227	228	229	230	231	232
233	234	235	236	237	238	239
240	241	242	243	244	245	246
247	248	249	250	251	252	253
254	255	256	257	258	259	260
261	262	263	264	265	266	267
268	269	270	271	272	273	274
275	276	277	278	279	280	281
282	283	284	285	286	287	288
289	290	291	292	293	294	295
296	297	298	299	300	301	302
303	304	305	306	307	308	309
310	311	312	313	314	315	316
317	318	319	320	321	322	323
324	325	326	327	328	329	330
331	332	333	334	335	336	337
338	339	340	341	342	343	344
345	346	347	348	349	350	351
352	353	354	355	356	357	358
359	360	361	362	363	364	365
366	367	368	369	370	371	372
373	374	375	376	377	378	379
380	381	382	383	384	385	386
387	388	389	390	391	392	393
394	395	396	397	398	399	400



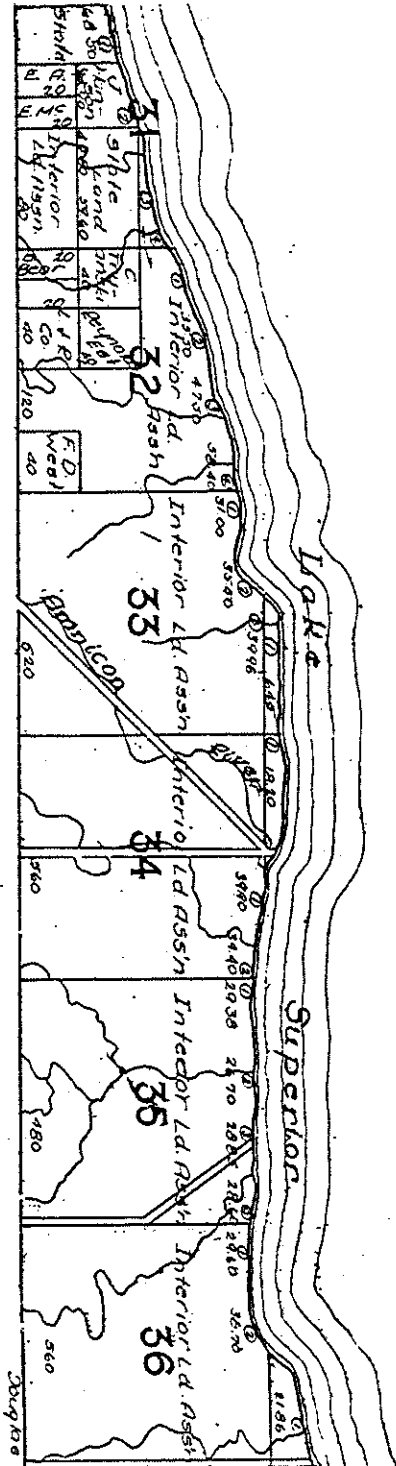
T48N.

R.12W.

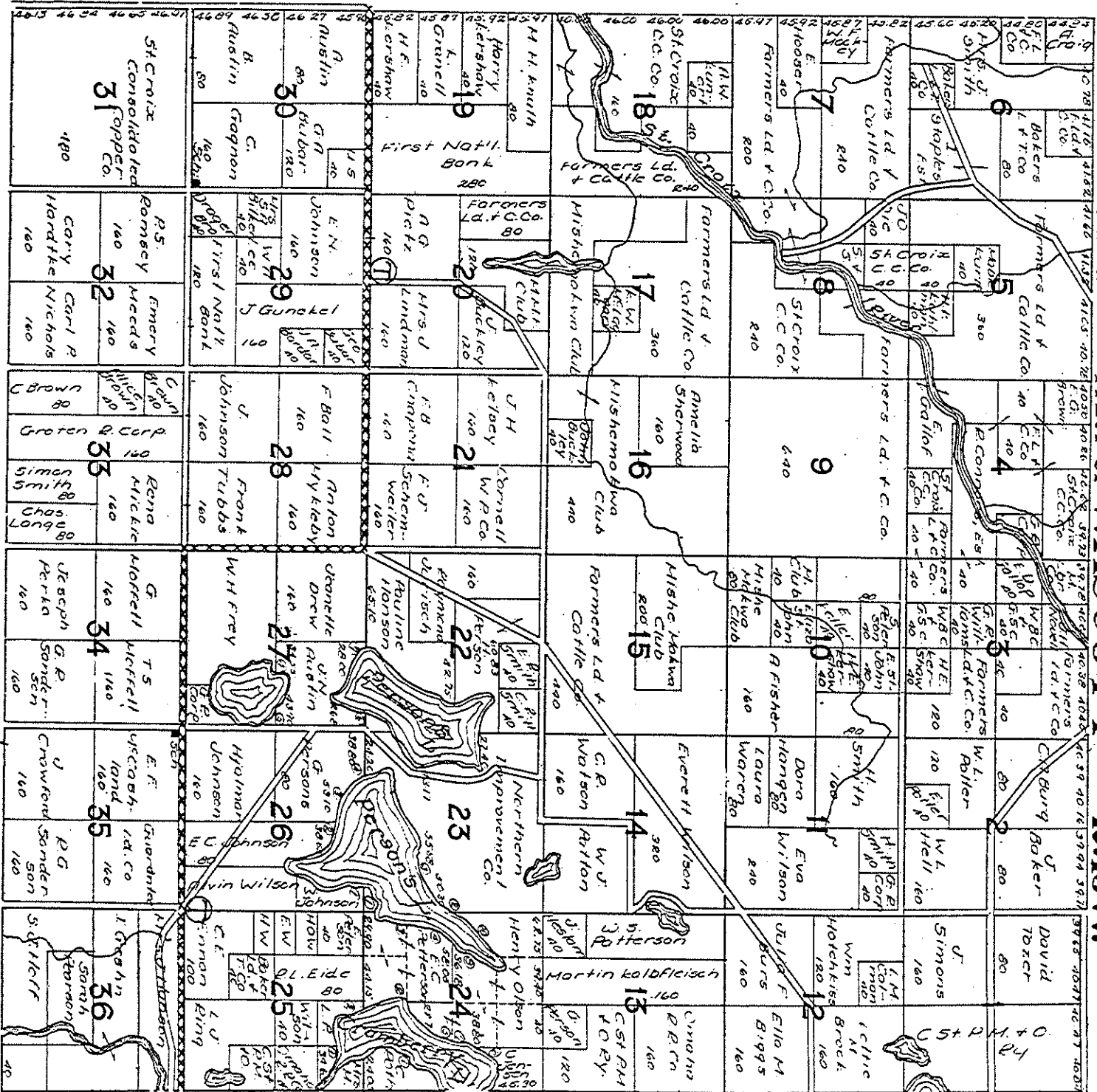
DOUGLAS



T.49N. PART OF LAKESIDE R.12W.

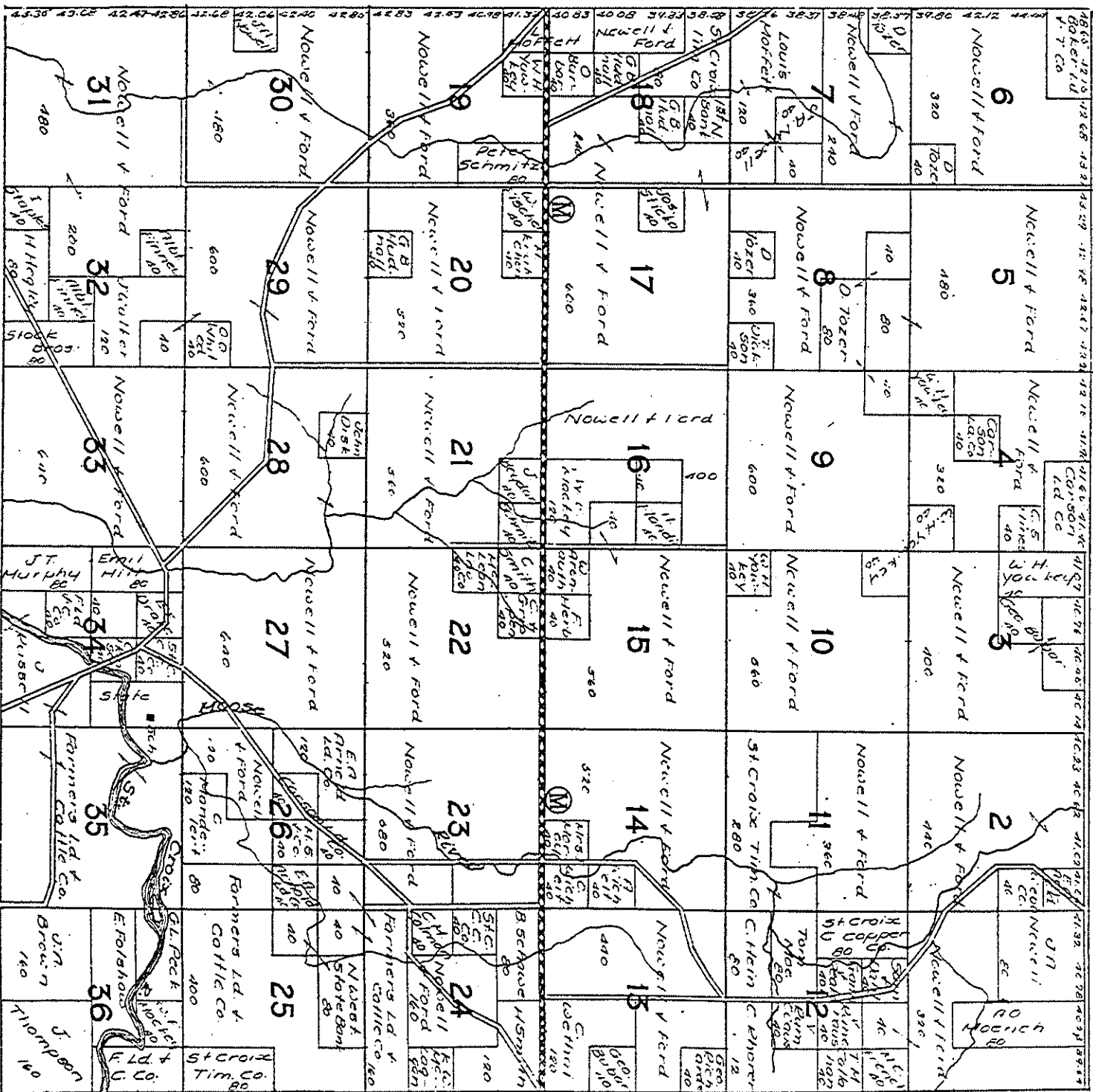


T13N. PART OF WASCOTT P.13W.





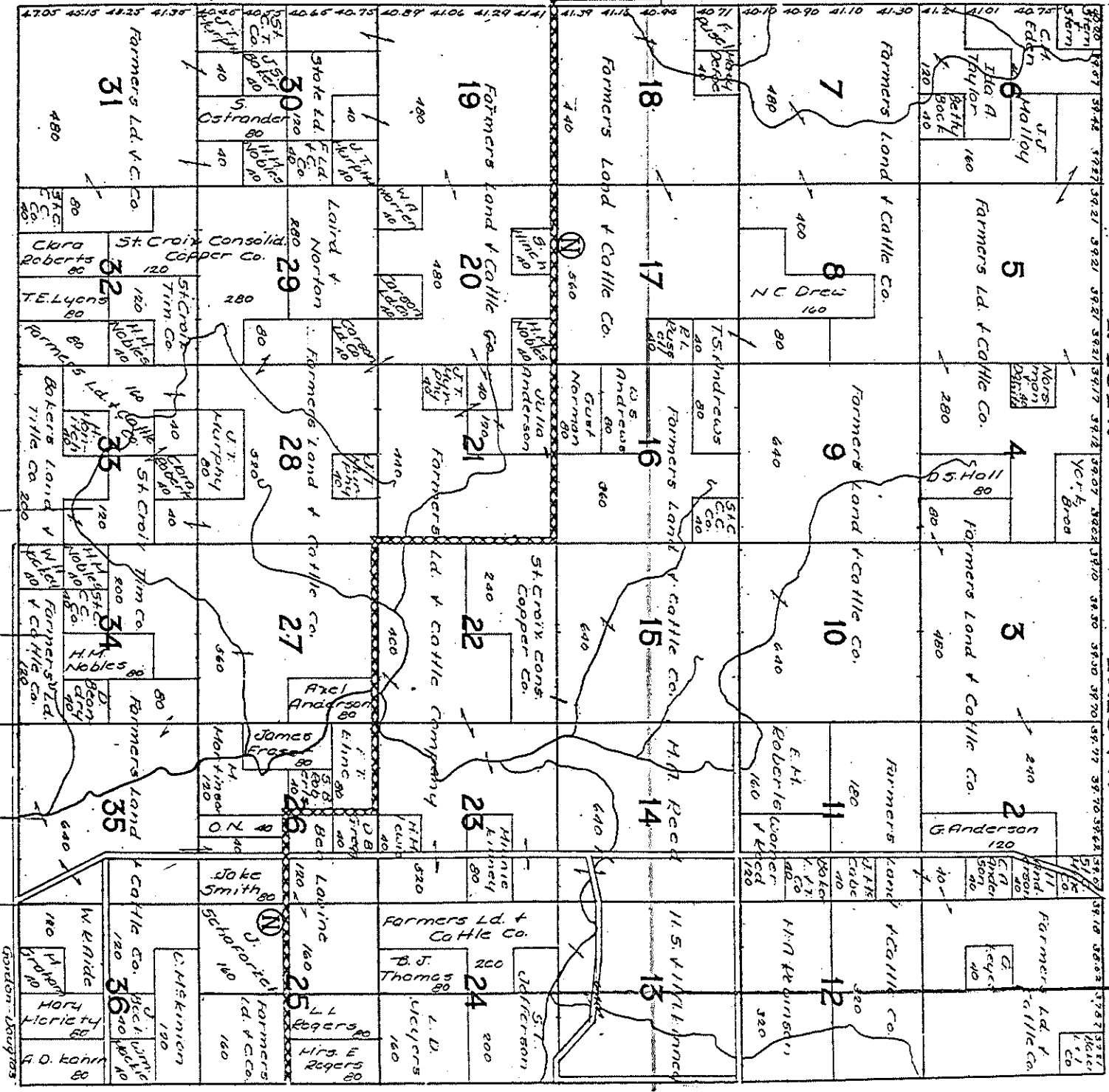
# T44N. PART OF GORDON R.13W.



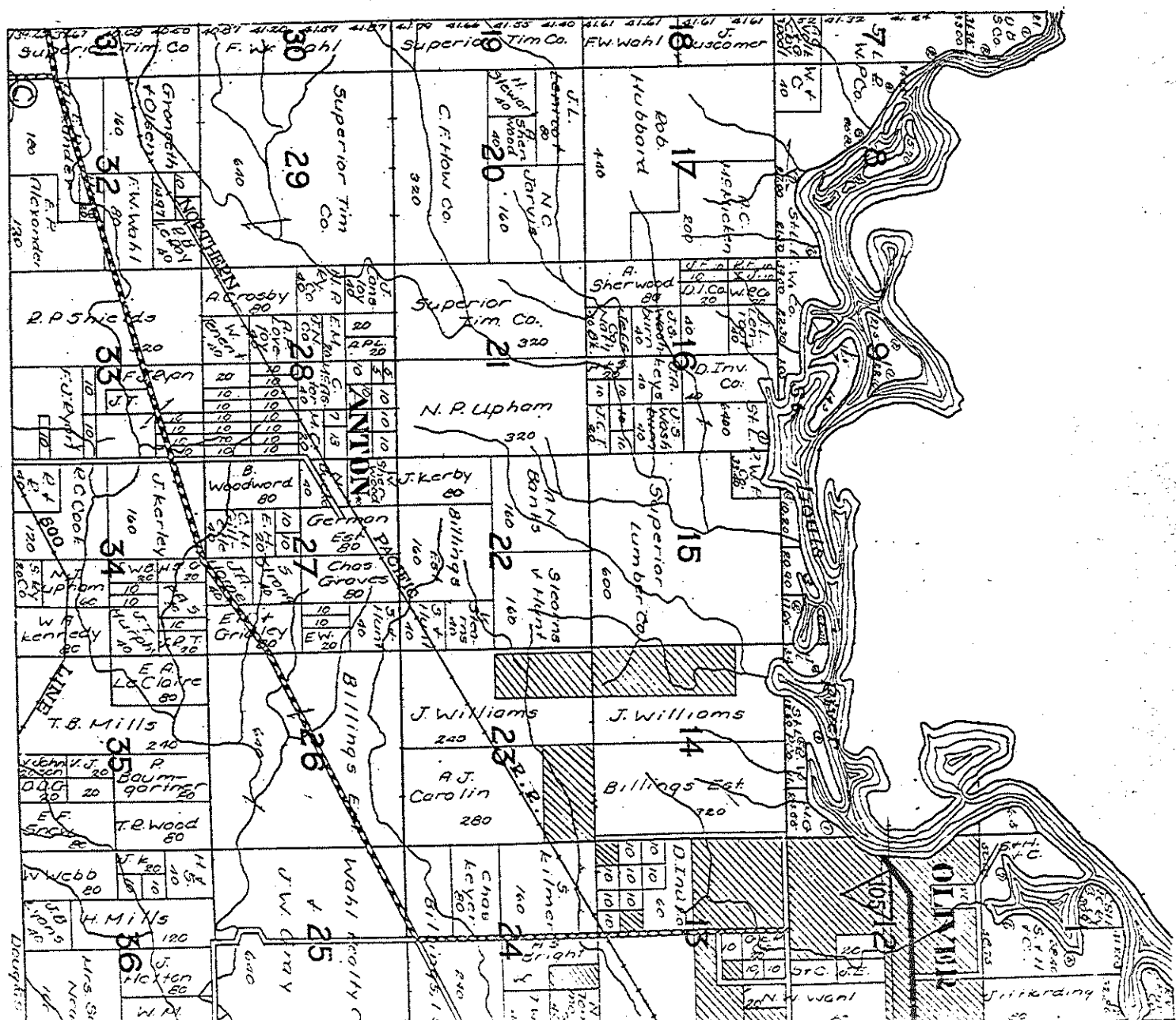
T45N.

R.13W.

DOUGLAS 24



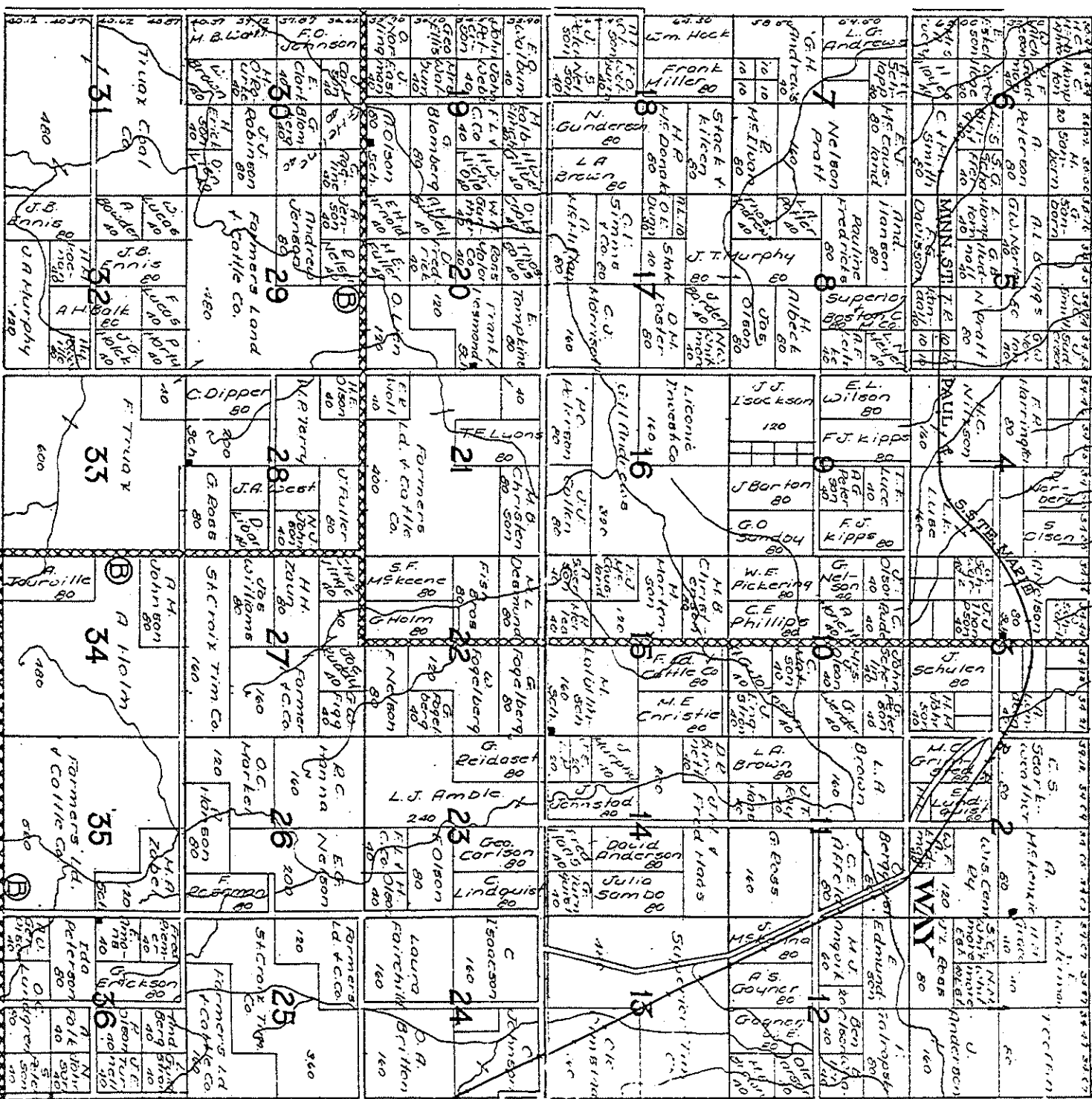
T48N. PART OF SUPERIOR R.15W. 25



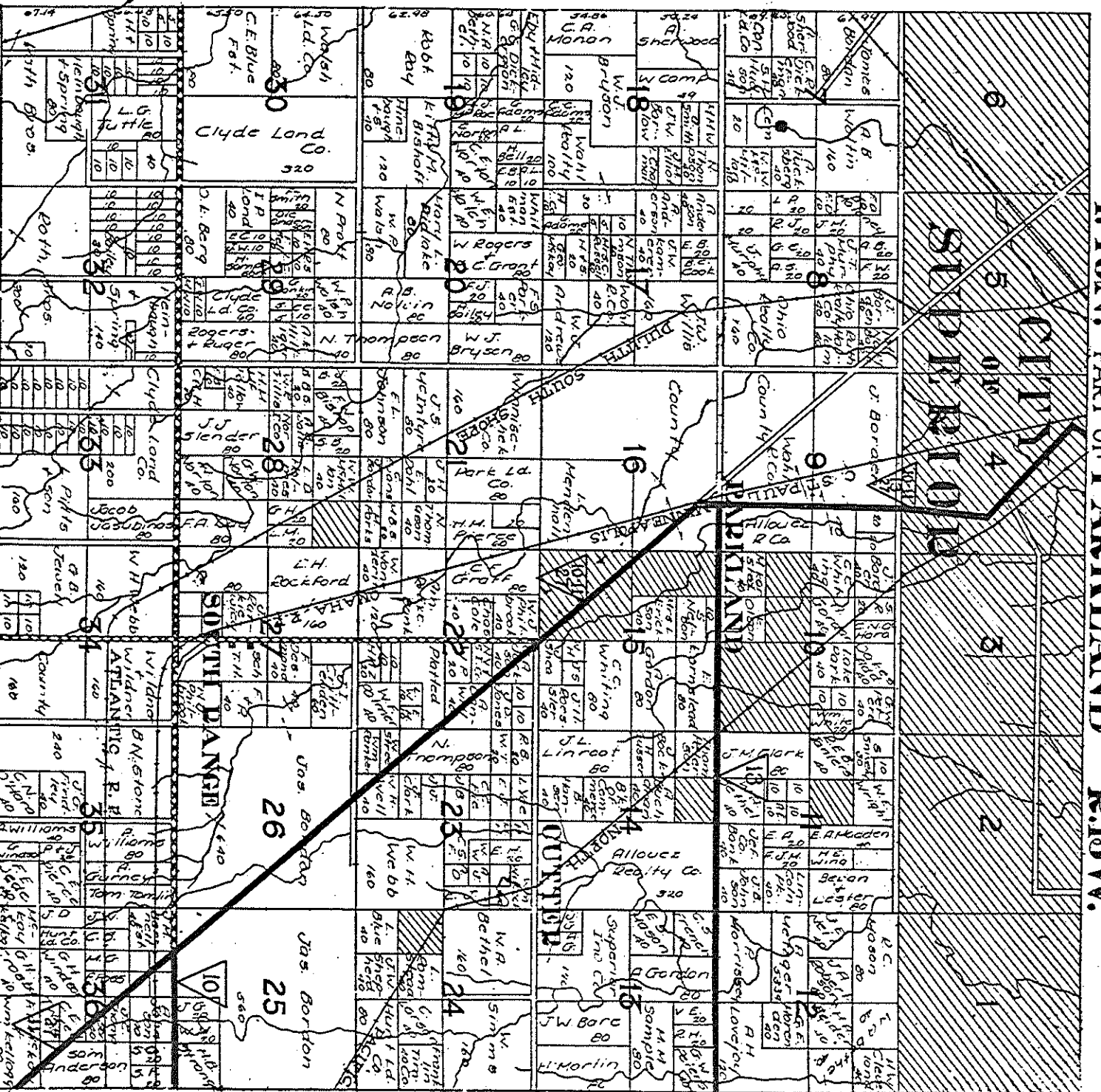


T47N.

R13W.

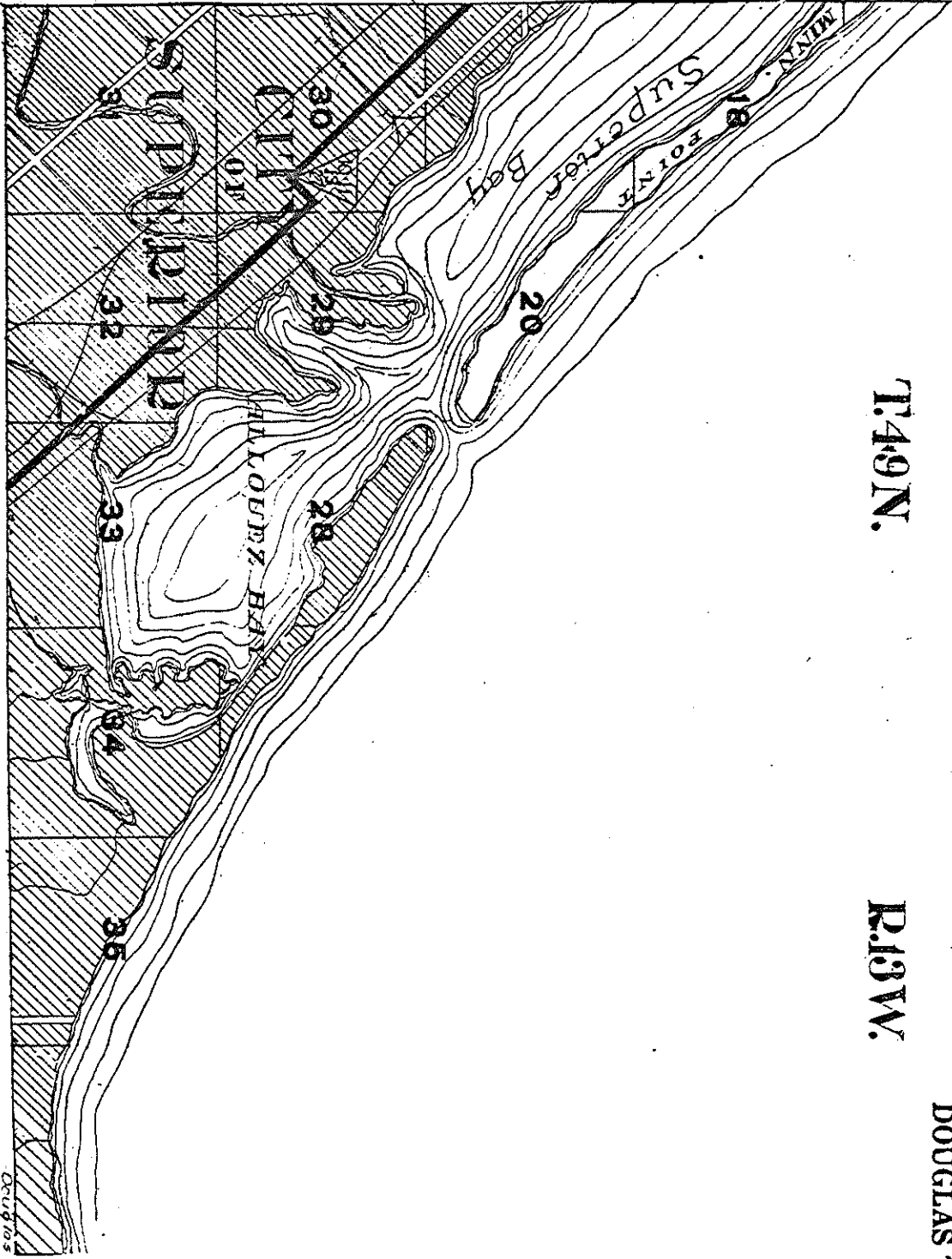


T.48N. PART OF PARKLAND R.3W.

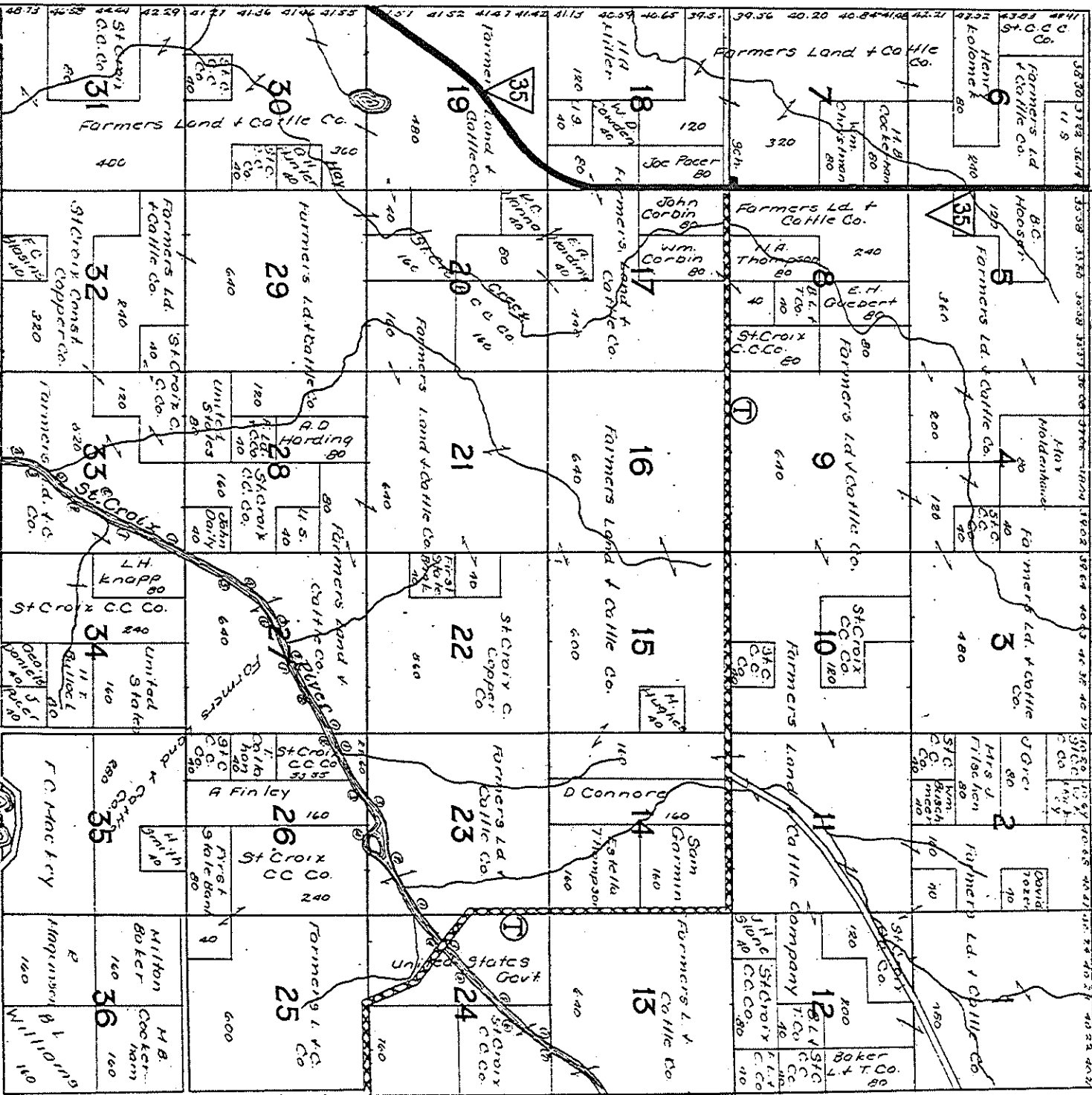


T.49N.

R.13W.



# T43N. PART OF DAIRYLAND R14W.



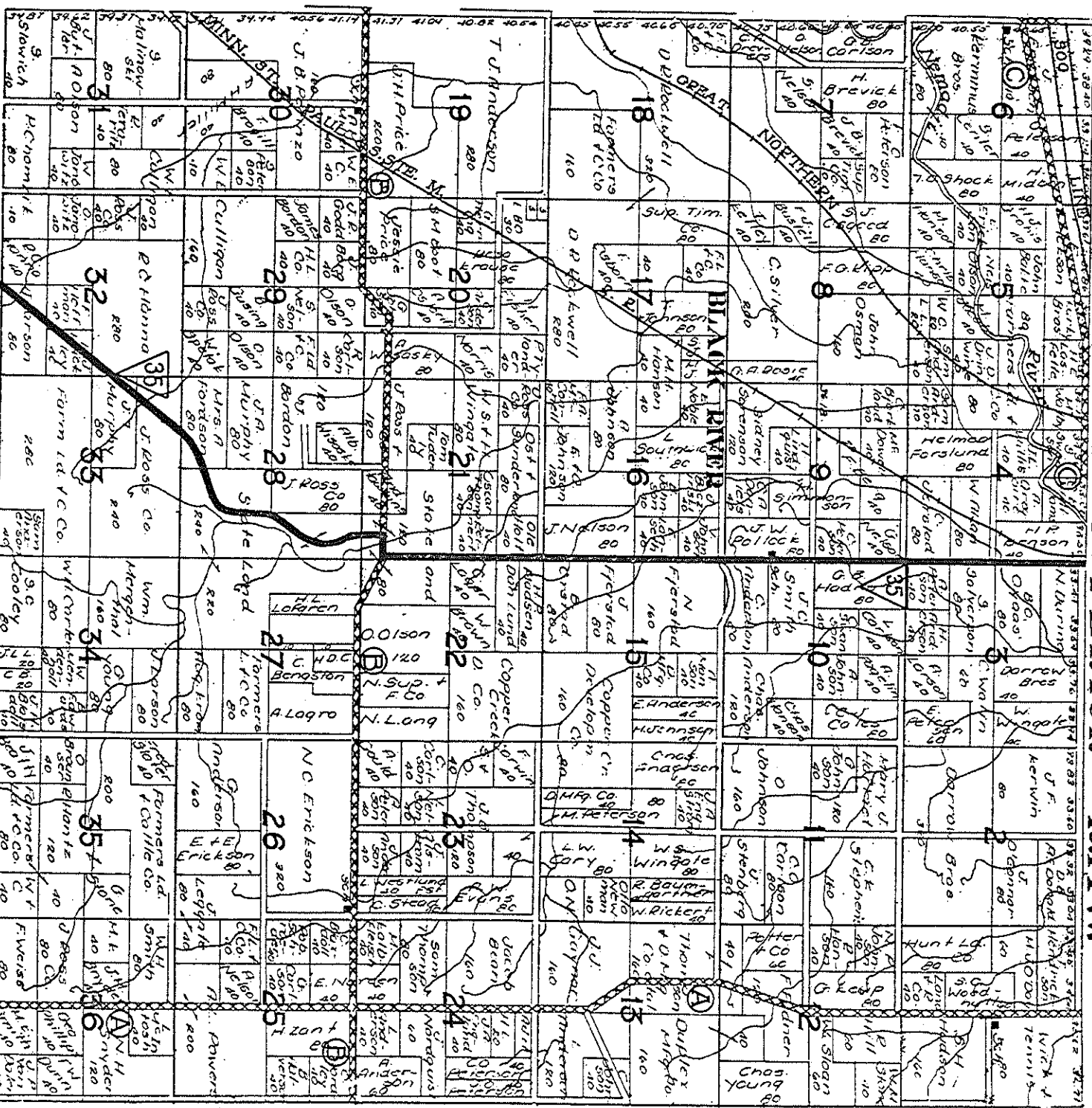






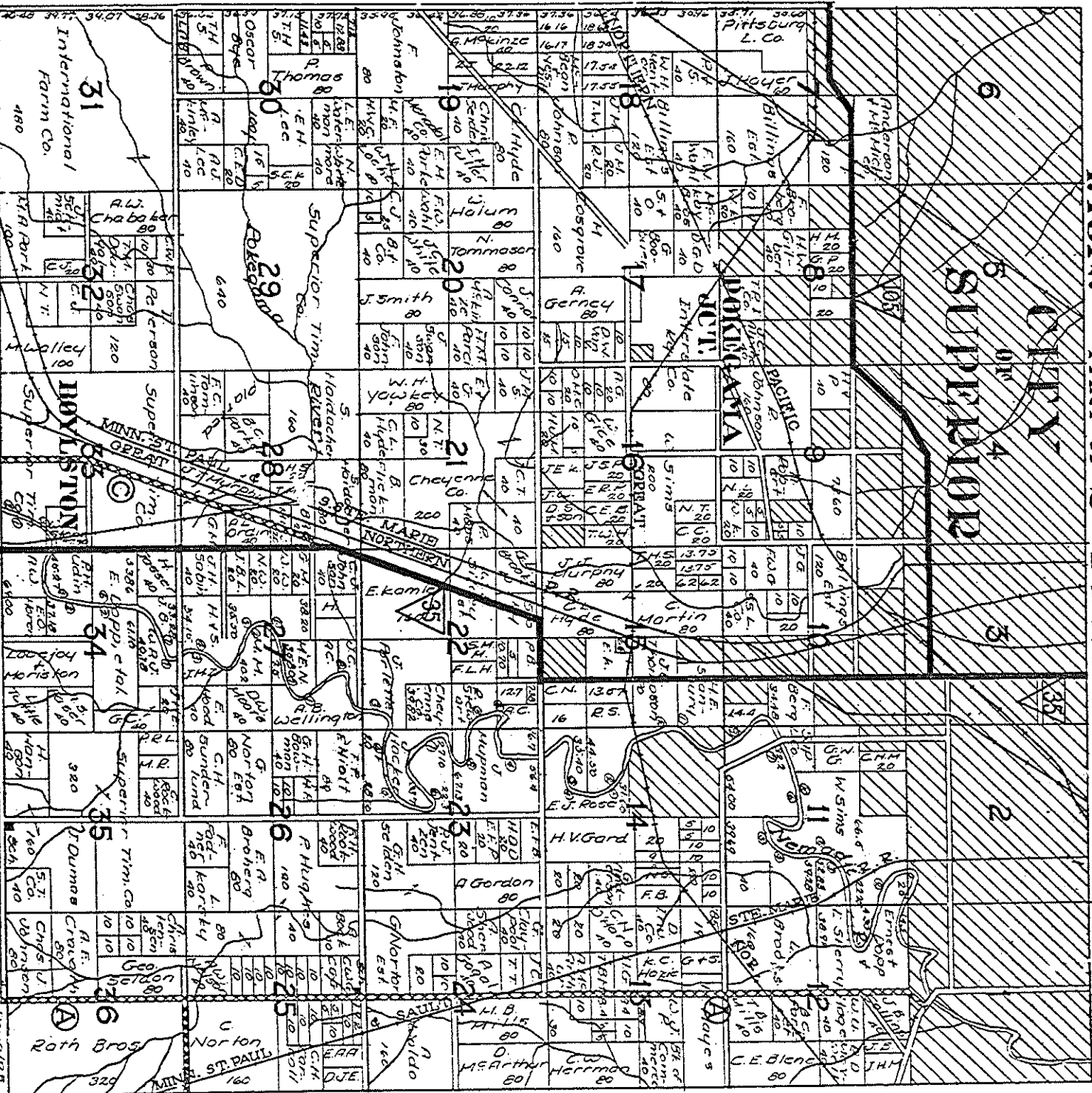


T47N. PART OF SUPERIOR R.14W.



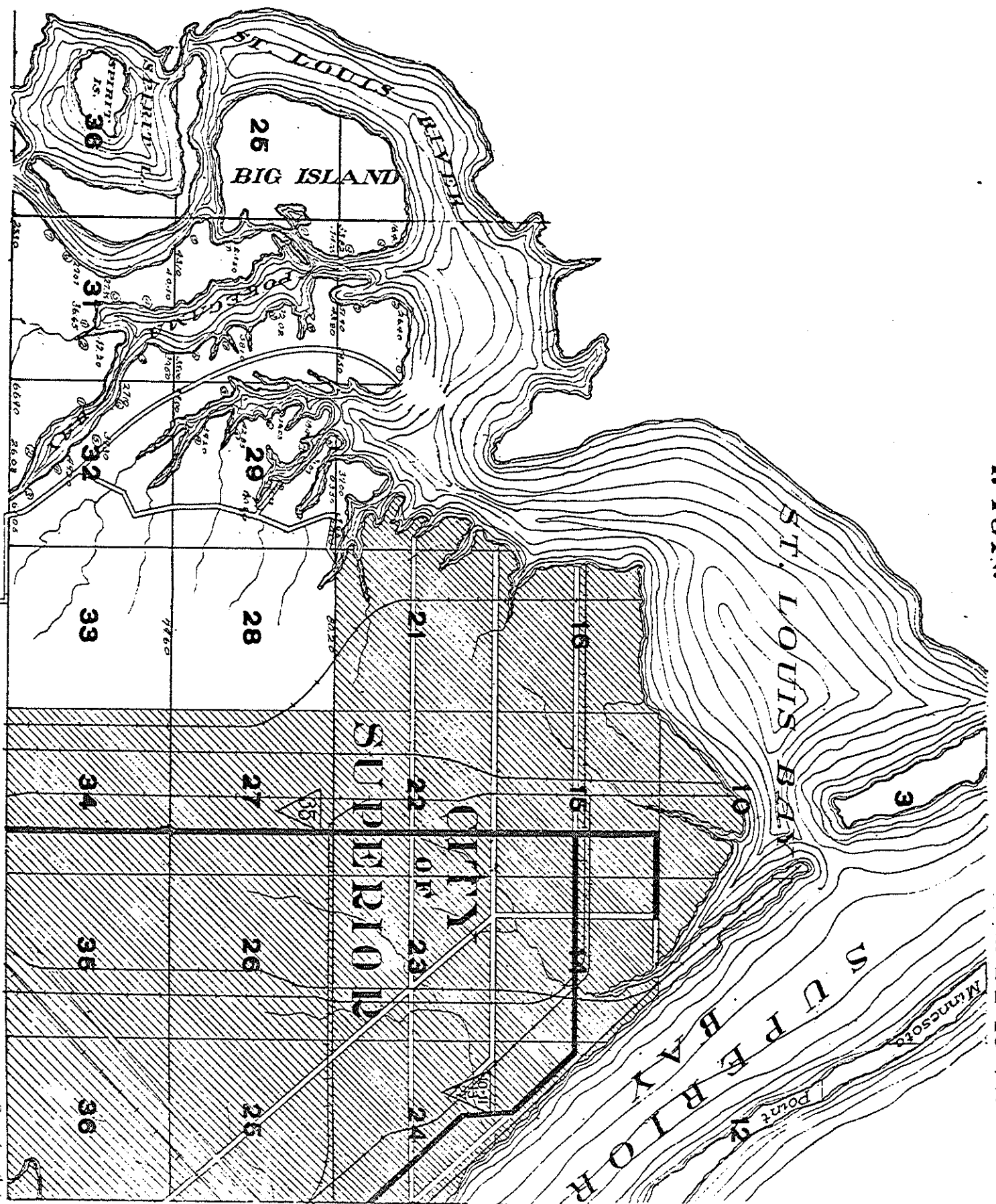
TAB. PART OF SUPERIOR R. & W. DOUGLAS

COPY SUPERIOR

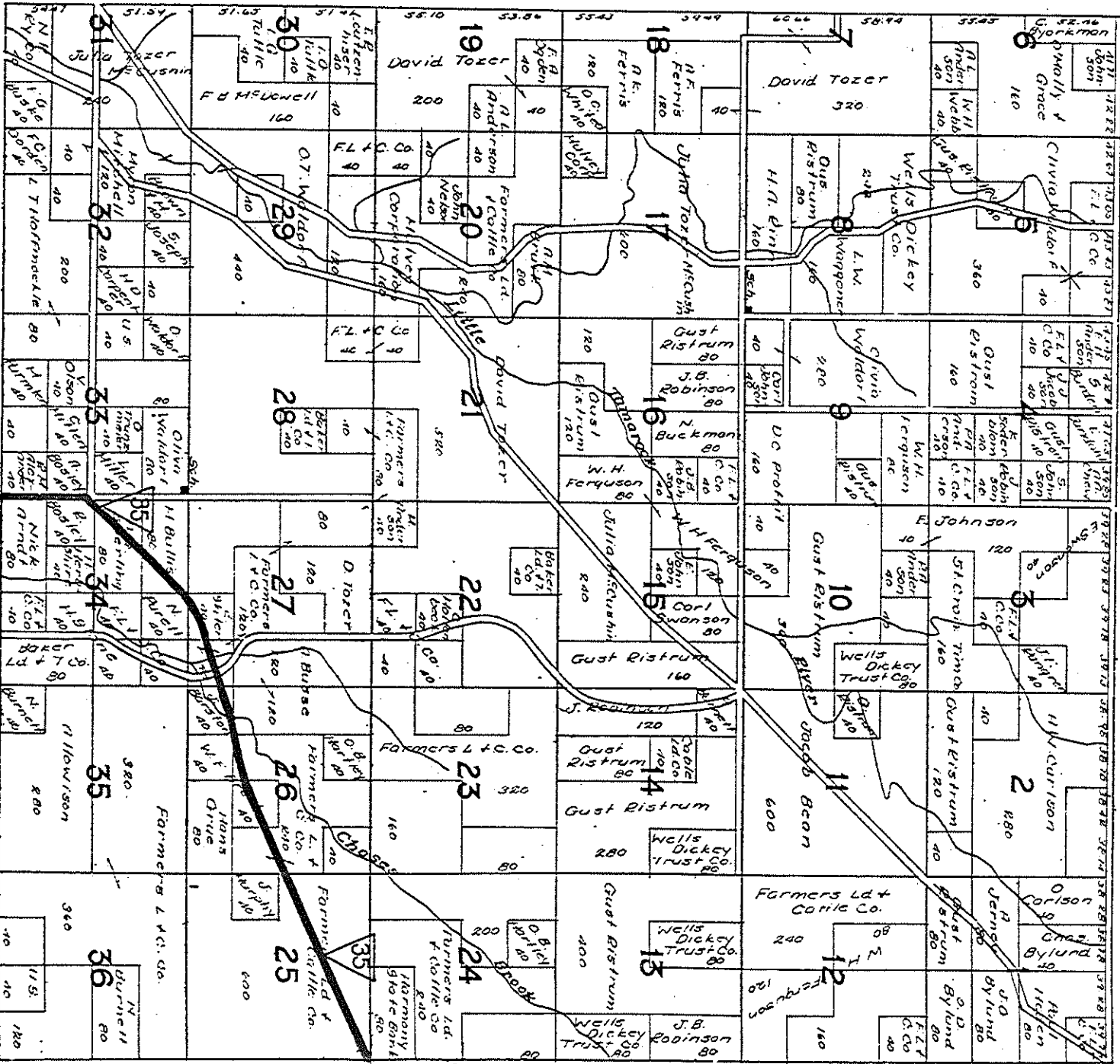


T.49N.

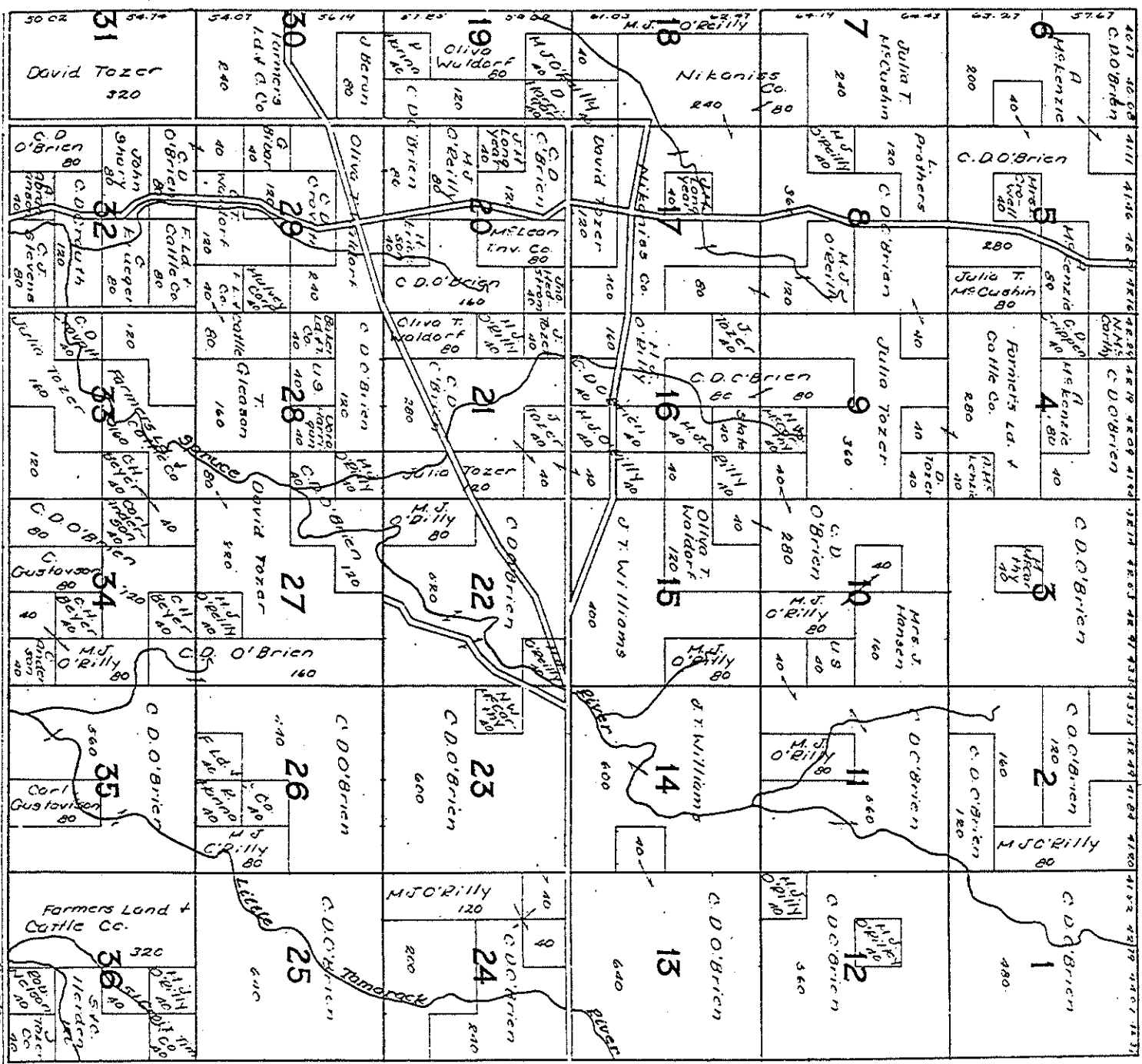
R.14.15W.



# T.43N. PART OF DAIRYLAND R.15W.



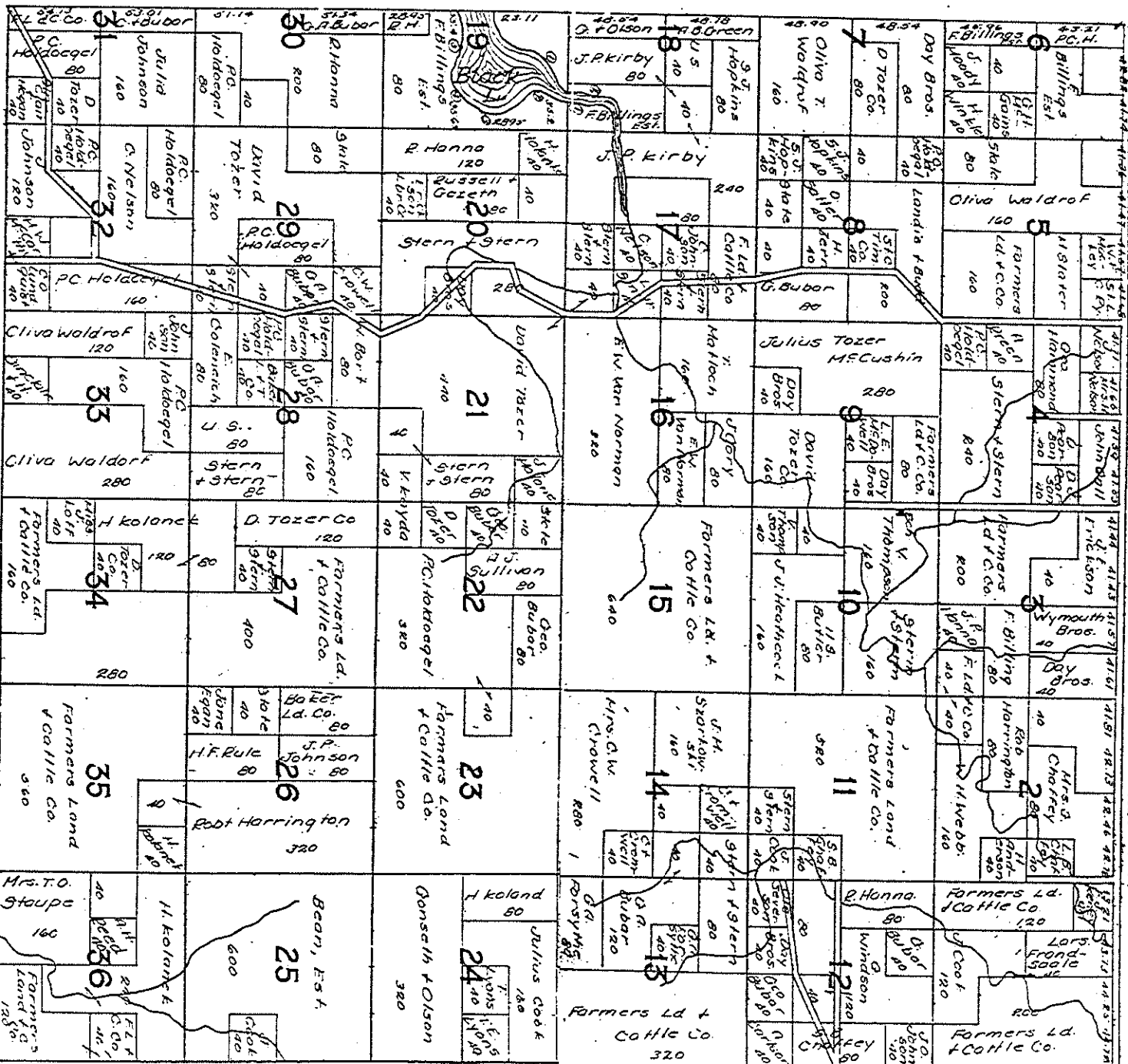
T.44N. PART OF DAIRYLAND R.15W. DOUGLAS



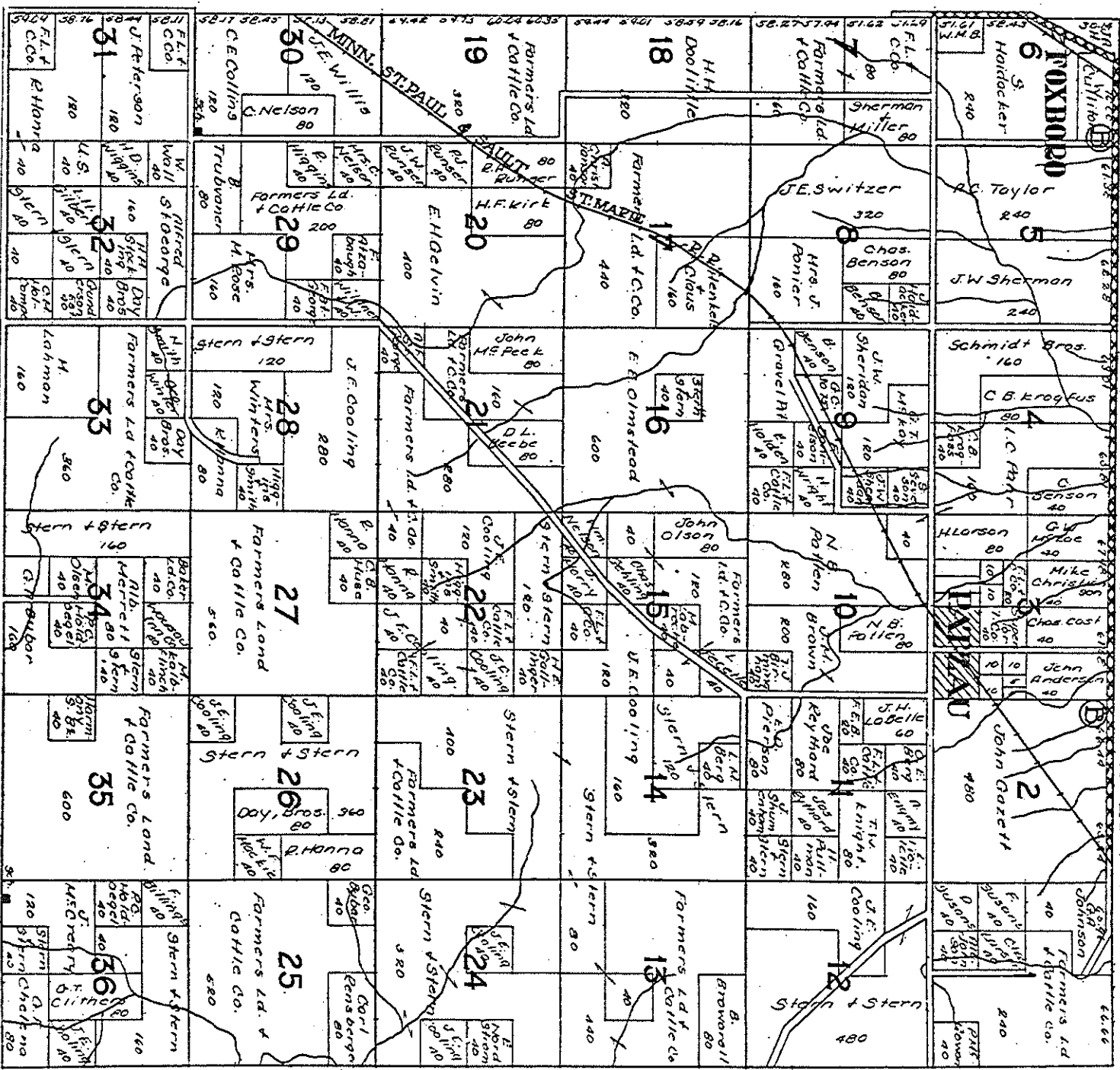
38



T.45N. PART OF SUMMIT R.15W. DOUGLAS



T.46N. PART OF SUMMIT R.15W. DOUGLAS



T42N.

R.15W.

