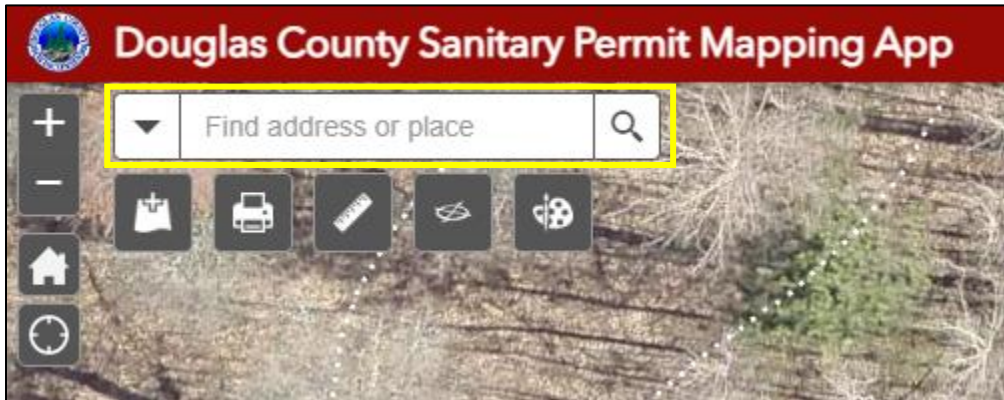
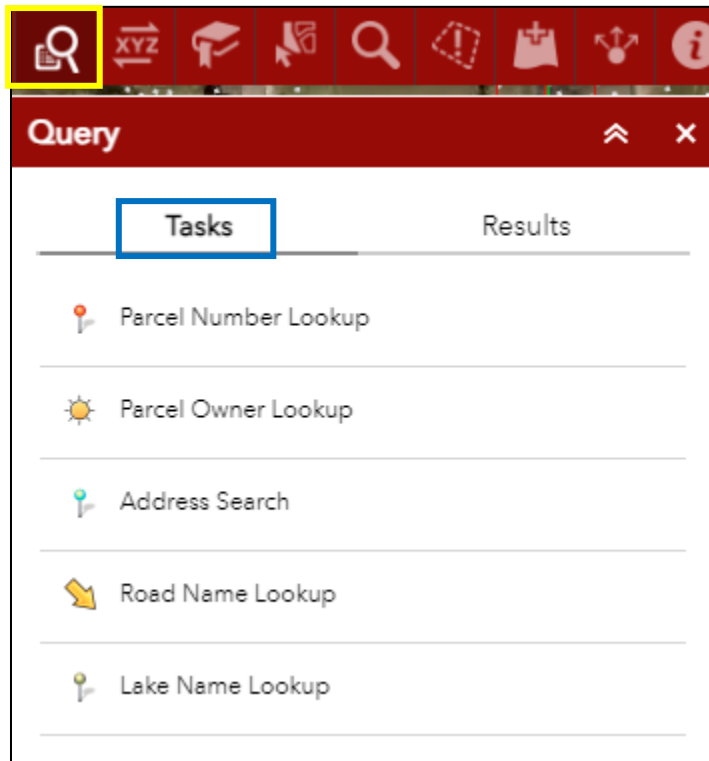


# Douglas County Sanitary and Soil Permit Mapping App

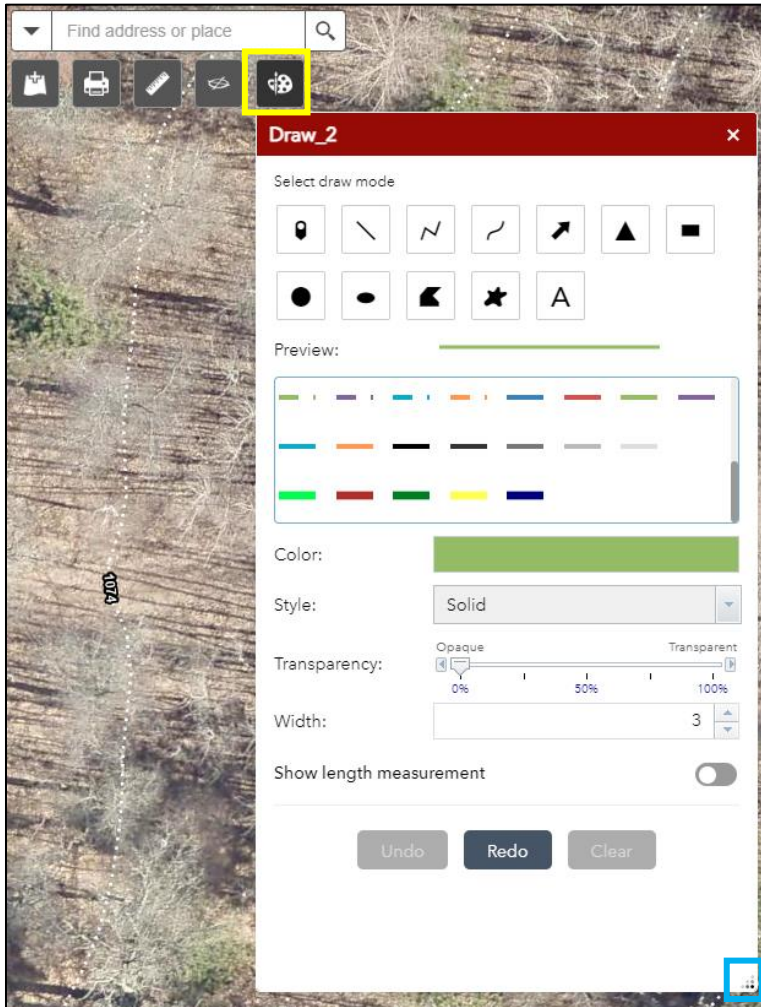
1. **Search** for the address in the search bar to zoom to the area on the map or pan and scroll on the map



- a. To search by parcel number, parcel owner or other; use the “Query” tool. After hitting the search tool, it will zoom to the entered parcel/street/lake and display information related to the item. After completing a query, click on the [Task ribbon](#) at the top of the query window to return to the Query options.



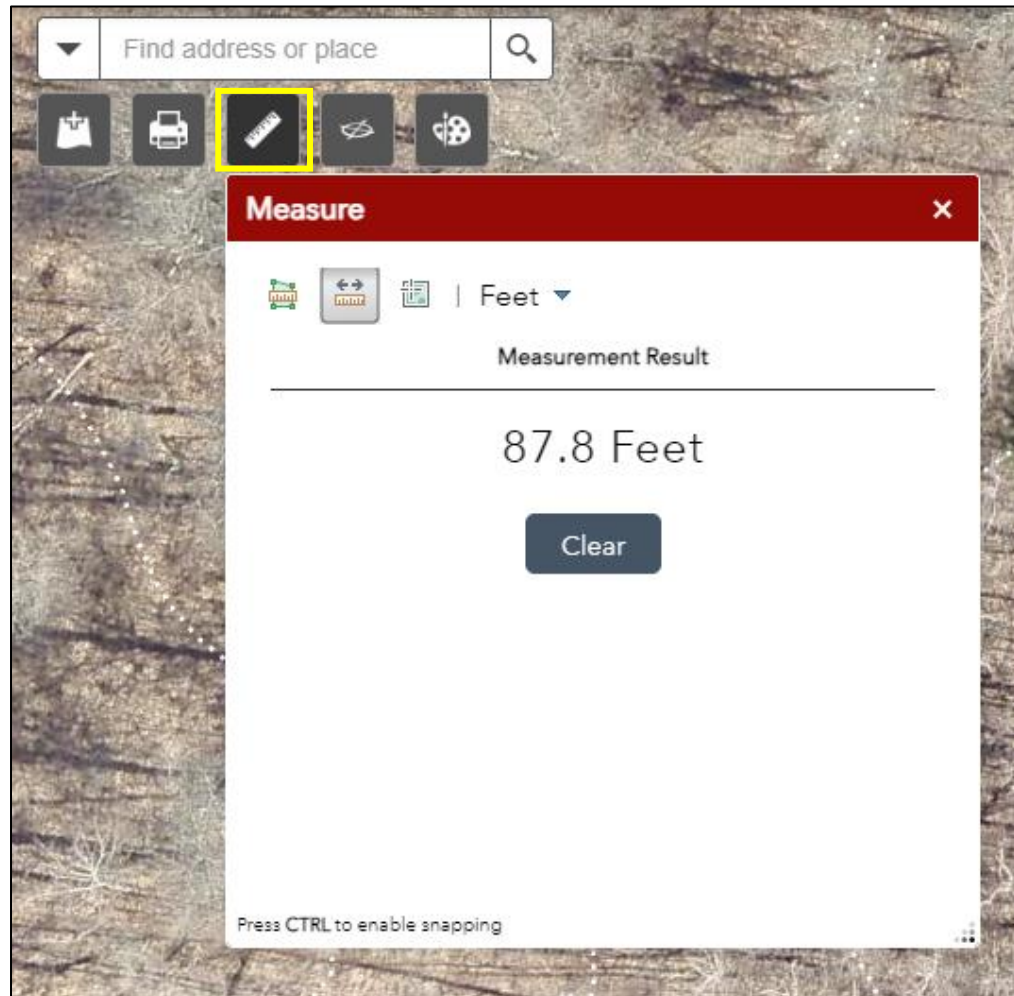
2. **Drawing** can be done by selecting the paint brush icon



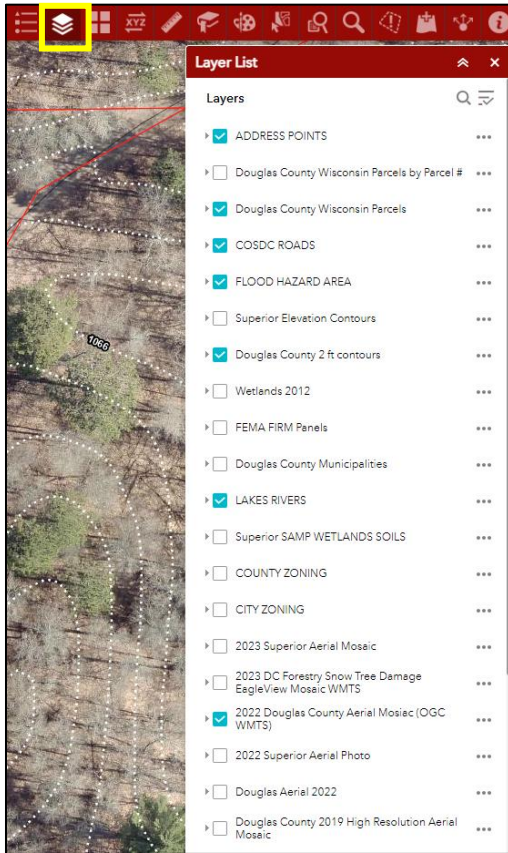
3. You can mark up the map with points, lines, polylines, and more. The color, symbology, transparency, and width can be changed to fit the map. You can also include line measurements, this will display the total length of the drawn object. Clear the map with the “Clear” button.
4. You can expand the draw window by dragging the bottom right corner of the window with the dots.

**ALL DRAWINGS WILL BE DELETED AFTER THE SESSION WINDOW IS CLOSED**

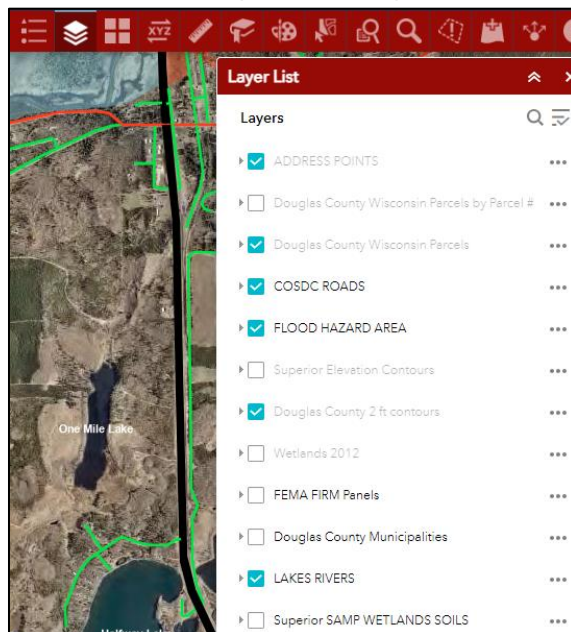
5. **Measurements** can be added to the map as well without drawing on the map, however there will be a line left. Within the measurement tool you can measure lengths, areas, and locations.
- For the area and length tool, click to drop points/corners and double click to end the measuring. After you double click, an area/length will be displayed in the Measure box as is shown below.
  - By holding “Ctrl”, the pointer will snap the underlying layers.



6. Toggle layers on and off using the layer list. Blue check marks mean the layer is visible.

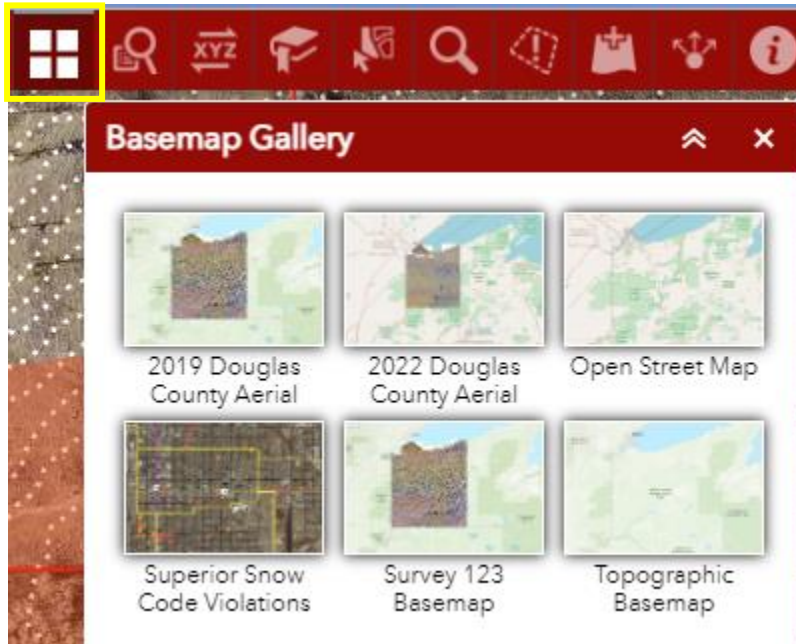


- a. Some layers have scale-based viewing. This means that depending on the current map scale you are viewing, those layers may or may not be visible.
  - i. Ex. The 2 ft. contours are not seen when the map is zoomed to the full extent (whole county) or in the extent below. To view the contours, you must zoom in closer to the map until the layer title becomes unshaded.

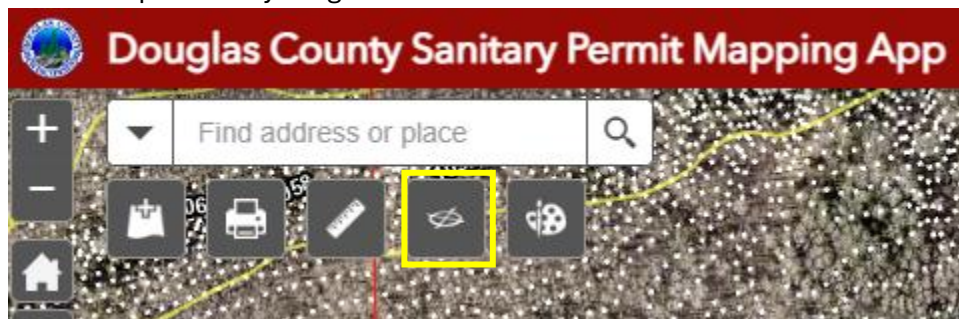




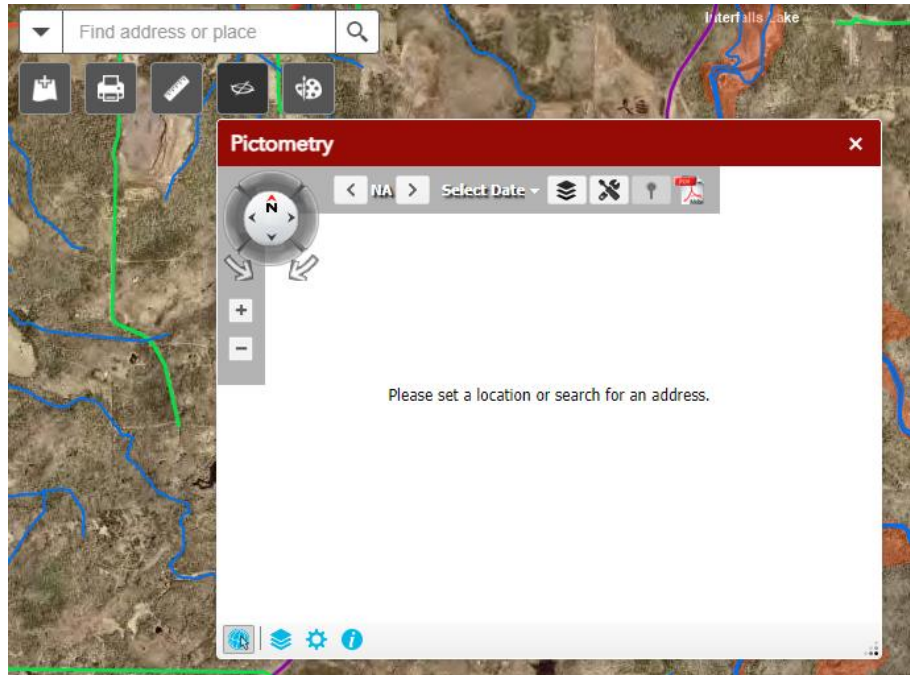
7. The basemap can be changed, however the standard basemap will usually be the best option as the imagery is the highest quality.



8. Pictometry imagery (oblique imagery) is also available if required. To activate pictometry, select the pictometry widget below the search bar.



- a. To generate imagery, click on the map that you would like to view or search for the address in the search bar.



- b. For further instructions see the training manual on the [Beacon site](#)

Please reach out to [Gishelp@douglascountywi.gov](mailto:Gishelp@douglascountywi.gov) or [gishelp@ci.superior.wi.us](mailto:gishelp@ci.superior.wi.us) with any questions or concerns about the app. For questions about permitting and zoning please contact [robin.schaffer@douglascountywi.gov](mailto:robin.schaffer@douglascountywi.gov)