

Tamarack Swamp

25
T36N R7W

Handwood Ridge

361

36
T36N R7W

400+50-2-7-3-T.B.54'

393+50-H.B.

391+25-HX.1x1.5-T.B.25'L&R

31
T36N R6W

360
TOWN LINE

60 360+00-2-7-5-T.B.60'

343+70-2-7-3-4-T.B.77'

331+00-2-7-5-T.B.60'
T35N R6W

318+83 End of Bridge
317+26-11-Bis Pile Br. 157'

312+40
350

302+00 (Center)

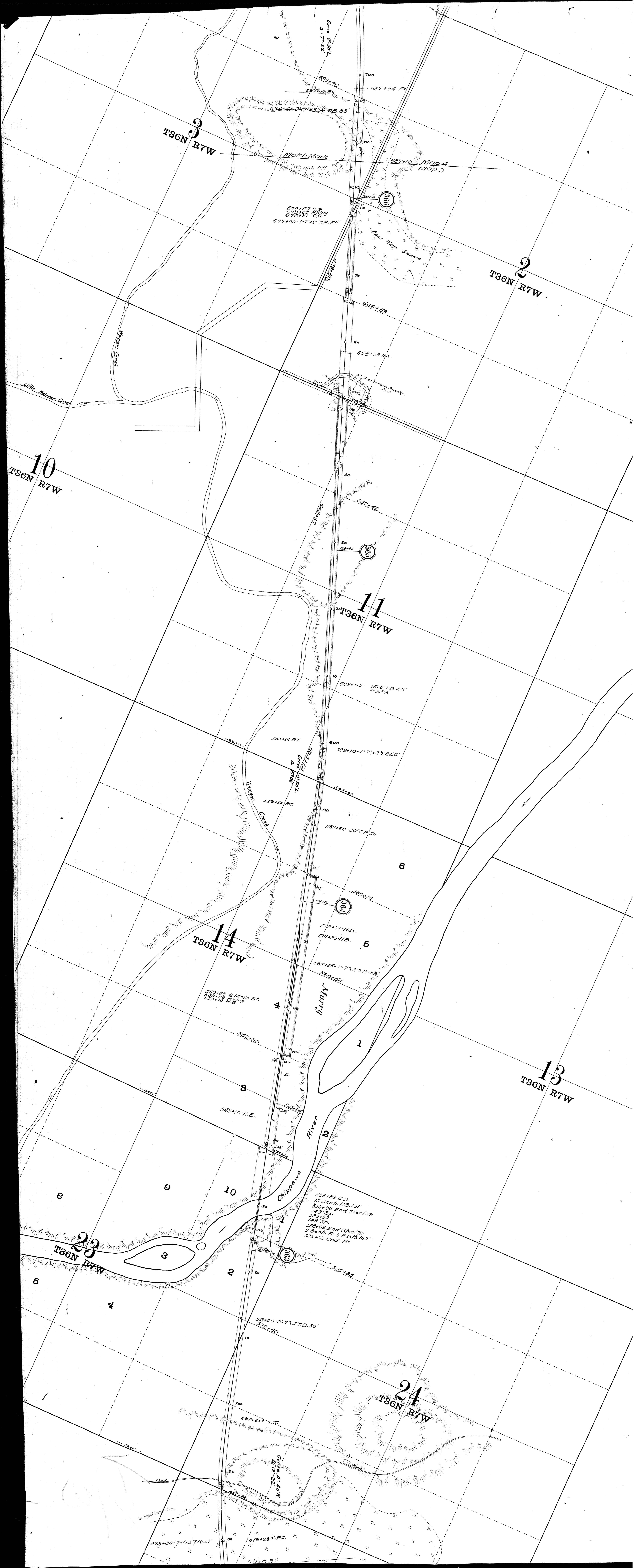
287+95-2-7-5-4-T.B.30'
287+20 H.B.

T35N R6W

Jerome
Creek

272+40-1-7-3-4-T.B.43'
269+46-H.B.

264+89



3
T36N R7W

2
T36N R7W

10
T36N R7W

11
T36N R7W

14
T36N R7W

13
T36N R7W

23
T36N R7W

24
T36N R7W

673+57 C.G.
873+55 T.M.
873+91 C.G.
677+80-17'x2' T.B. 56'

320

365

341

324

Match Mark

Map 4
Map 3

Open Twp. Swamp

Dead to New Township
1/4 Sec

Chippewa River

Maizee Creek

Maizee Creek

Little Weizer Creek

532+89 E.B.
13 Bents P.B. 191'
330+99 End Steel Tr
149'50"
329+30
143'13"
323+09 End Steel Tr
8 Bents Tr. 3 P.B. 160'
325+42 End. Br.

550+43 E. Main St.
339'78' C.M.
339'78' R.B.

543+10 H.B.

559+44 RT.
C.M. 1/4 Sec
579+44 PC

609+05 15'x2' T.B. 45'
K-364-A

599+10-17'x2' T.B. 66'

587+60-30' C.P. 56'

571+26 H.B.
571+26 H.B.

567+25-17'x2' T.B. 69'

566+54

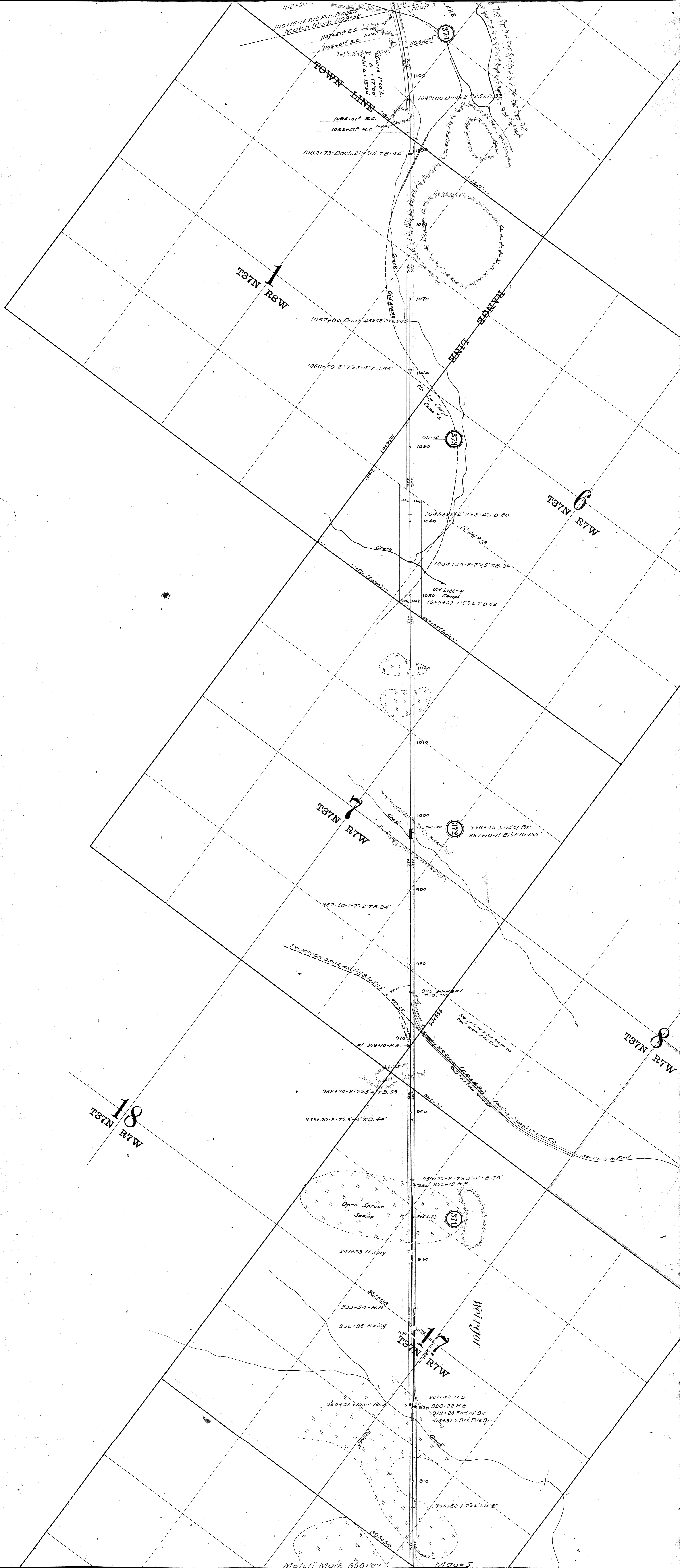
525+195

513+00-27'x5' T.B. 50'
512+80

497+85' RT.
C.M. 1/4 Sec
472+22'

479+80-25'x5' T.B. 27'
479+28' PC.

Map 3



1112+50
110+15-16 Bis Pile Br 223
Match Mark 1102+32

1107+51* E.S.
1106+01* E.C.
Curve 1°00' L.
R.H.I. Δ = 1200'
S.P. = 1350'

1094+01* B.C.
1092+51* B.S.
1089+73-Doub. 2°7'x5'T.B. 44'

1104+08
1100

1097+00 Doub. 2°7'x5'T.B. 32'

T37N R8W

TOWN LINE
RANGE LINE

1067+00 Doub. 4x52' W.C. 200'

1060+50-2°7'x3-4'T.B. 66'

1051+28
1050

T37N R7W

1048+50-2°7'x3-4'T.B. 80'

1040

1044+18
1034+39-2°7'x5'T.B. 94'

Old Logging
1030 Camps
1029+09-1°7'x2'T.B. 62'

T37N R7W

998+45 End of Br
997+10-11-Bis P.Br. 135'

987+50-1°7'x2'T.B. 34'

THOMPSON SPUR AND H.B. BEYOND

975 34-H.B. #1
#10 Piles

#1-969+10-H.B.

962+70-2°7'x3-4'T.B. 58'

959+00-2°7'x3-4'T.B. 44'

T37N R7W

T37N R7W

950+90-2°7'x3-4'T.B. 38'
950+19 H.B.

Open Spruce
Swamp

941+23 H.X'ing

931+08

933+54-H.B.

930+96-H.X'ing

T37N R7W

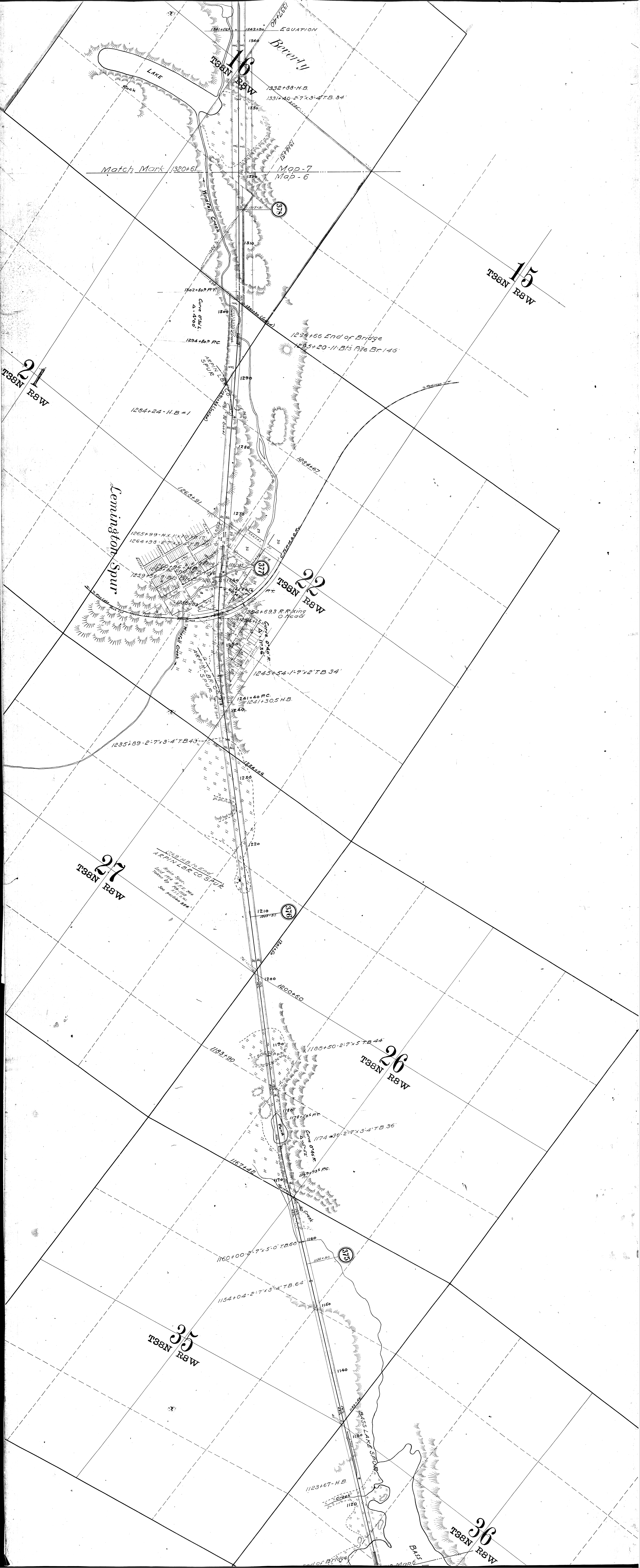
920+51 Water Tank

921+42 H.B.
920+22 H.B.
919+26 End of Br
918+31 7 Bis Pile Br

906+60-1°7'x2'T.B. 31'

Match Mark 998+27

Map #5



EQUATION

Beverly

LAKE
Rock

1332+88-H.B.
1331+40-2.7x3.4 TB 84
1330

Match Mark 1320+61

Map-7
Map-6

15
T38N R8W

21
T38N R8W

1302+80 P.T.
Curve 0.5% L
Δ = 4.50'

1292+66 End of Bridge
1285+20-11-B's Pile Br 146

1284+24-H.B. #1

Lemington Spur

22
T38N R8W

1265+99-H.X. 1/2
1264+98-2.7x3.4 TB 84
1259+56-2.7x3.4 TB 84

1252+693 R.R. Ring
O'head

1245+54-1.7x2 TB 34'

1241+40 P.C.
1241+30.5 H.B.

1235+89-2.7x3.4 TB 43'

27
T38N R8W

1209 H.B. to End
of Lemington Spur
End of Spur to
be shown by
see notation 354

1210
1209+30

26
T38N R8W

1188+50-2.7x5 TB 44'

1183+90

1174+36-2.7x3.4 TB 36'

1170

1160+00-2.7x5.0 TB 60'

1154+04-2.7x3.4 TB 64'

35
T38N R8W

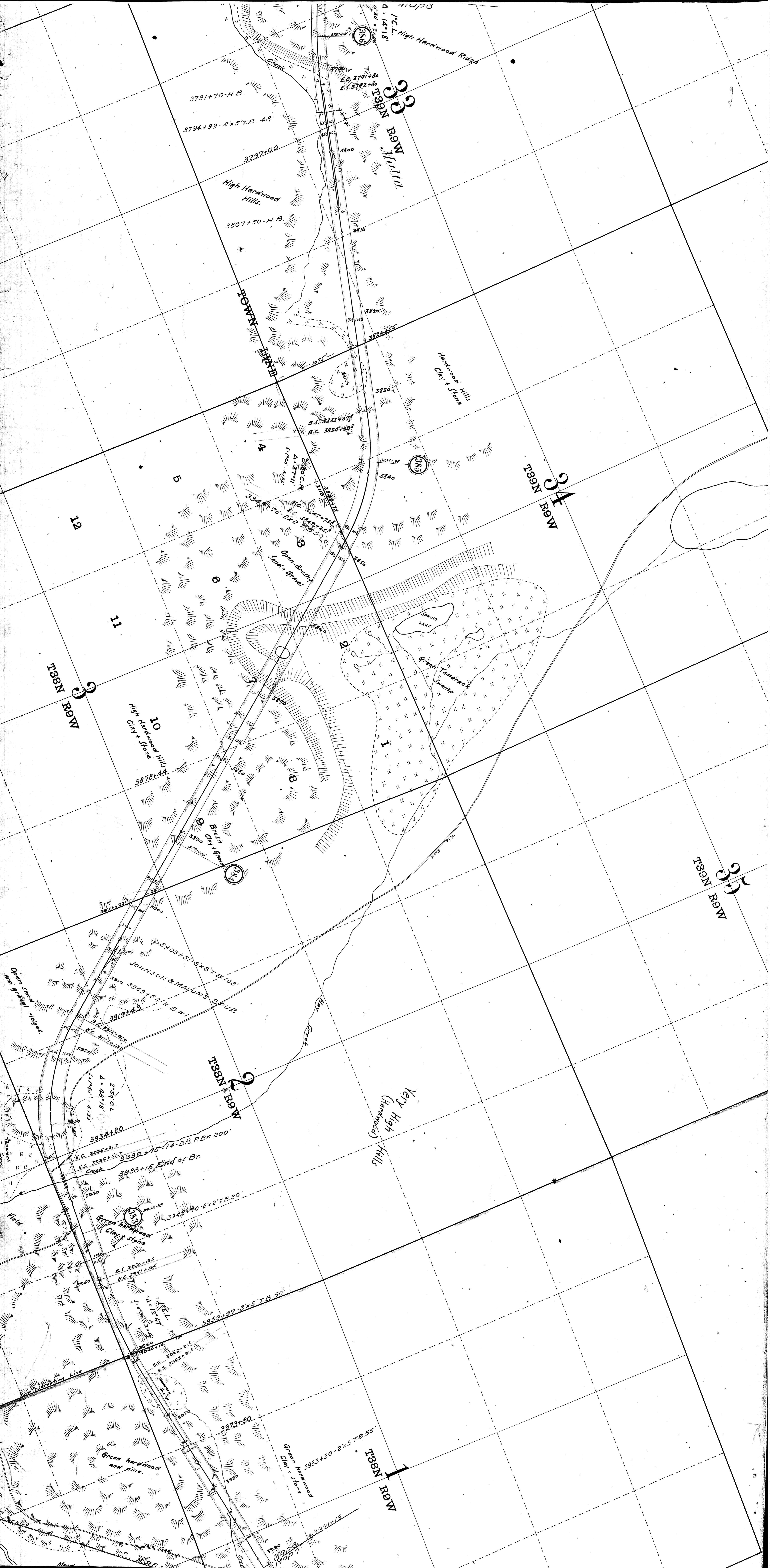
1140

1123+67-H.B.

36
T38N R8W

BASS LAKE SPUR

End of Bridge



High Hardwood Ridge

T89N E9W
Mullin

3791+70-H.B.

3794+99-2x5TB 48

3797+00

High Hardwood Hills

3807+50-H.B.

T88N E9W

Hardwood Hills
Clay + Stone

T89N E9W

12

11

10

T88N E9W

High Hardwood Hills
Clay + Stone

3878+44

Brush
Clay + Stone

T89N E9W

T89N E9W

Open sand
and gravel ridges

JOHNSON & MALUMS SPUR

3903+57-2x3TB 108

3909+64-H.B. #1

3919+43

T88N E9W

Very High
Hills
(Hardwood)

Field

Green Hardwood
Clay + Stone

3934+20

3935+21.7

3936+53.7

3938+15 End of Br

3943+80

3950+135

3951+135

3952+14

3952+91.8

3953+91.8

3973+80

3983+90-2x5TB 55

T88N E9W

Green hardwood
and pine

Green hardwood
Clay + Stone

3991+19

3990

3991

3992

3993

3994

3995

3996

3997

3998

3999

4000

4001

4002

4003

4004

4005

4006

4007

4008

4009

4010

4011

4012

4013

4014

4015

4016

4017

4018

4019

4020

4021

4022

4023

4024

4025

4026

4027

4028

4029

4030

4031

4032

4033

4034

4035

4036

4037

4038

4039

4040

4041

4042

4043

4044

4045

4046

4047

4048

4049

4050

4051

4052

4053

4054

4055

4056

4057

4058

4059

4060

4061

4062

4063

4064

4065

4066

4067

4068

4069

4070

4071

4072

4073

4074

4075

4076

4077

4078

4079

4080

4081

4082

4083

4084

4085

4086

4087

4088

4089

4090

4091

4092

4093

4094

4095

4096

4097

4098

4099

4100

4101

4102

4103

4104

4105

4106

4107

4108

4109

4110

4111

4112

4113

4114

4115

4116

4117

4118

4119

4120

4121

4122

4123

4124

4125

4126

4127

4128

4129

4130

4131

4132

4133

4134

4135

4136

4137

4138

4139

4140

4141

4142

4143

4144

4145

4146

4147

4148

4149

4150

4151

4152

4153

4154

4155

4156

4157

4158

4159

4160

4161

4162

4163

4164

4165

4166

4167

4168

4169

4170

4171

4172

4173

4174

4175

4176

4177

4178

4179

4180

4181

4182

4183

4184

4185

4186

4187

4188

4189

4190

4191

4192

4193

4194

4195

4196

4197

4198

4199

4200

4201

4202

4203

4204

4205

4206

4207

4208

4209

4210

4211

4212

4213

4214

4215

4216

4217

4218

4219

4220

4221

4222

4223

4224

4225

4226

4227

4228

4229

4230

4231

4232

4233

4234

4235

4236

4237

4238

4239

4240

4241

4242

4243

4244

4245

4246

4247

4248

4249

4250

T89N R10W
26

STONE LAKE
T89N R10W
24

T89N R10W
25

WASHBURN CO
SAWYER CO

T89N R10W
30

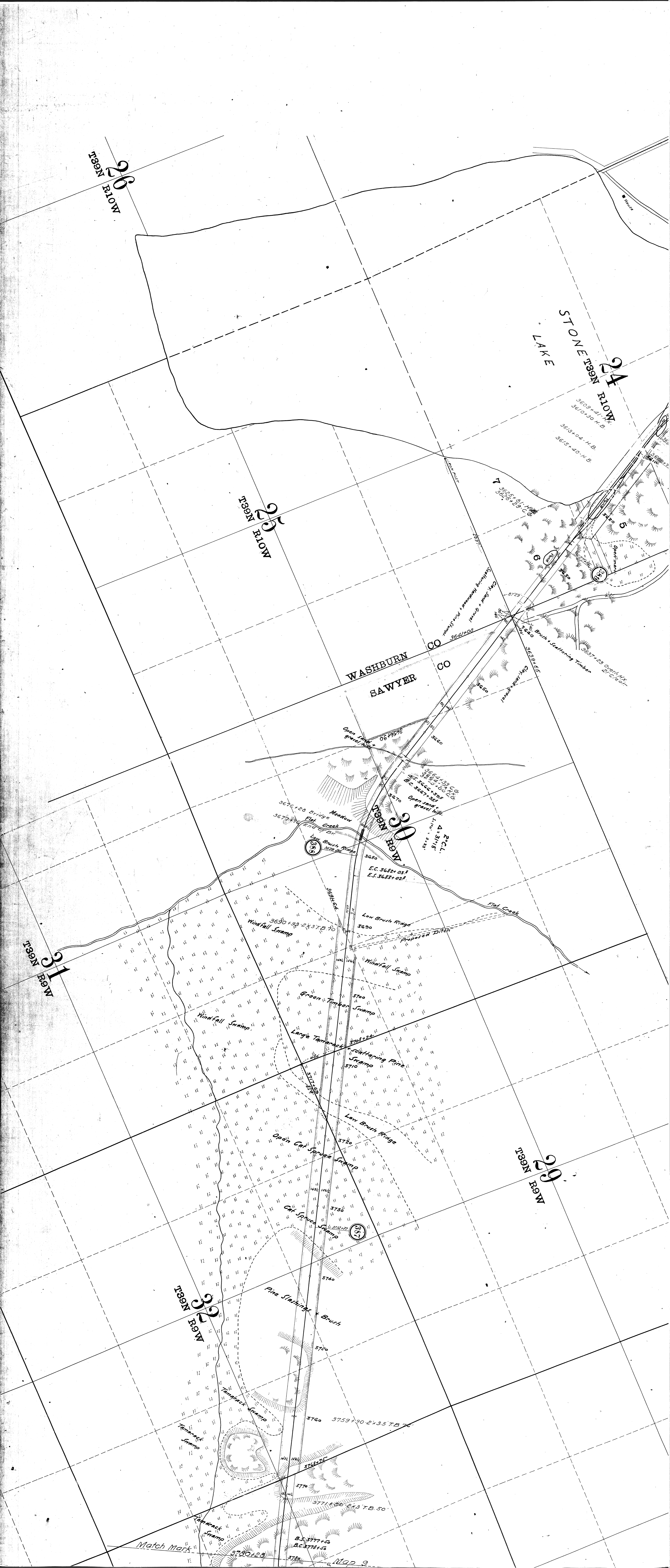
T89N R9W
31

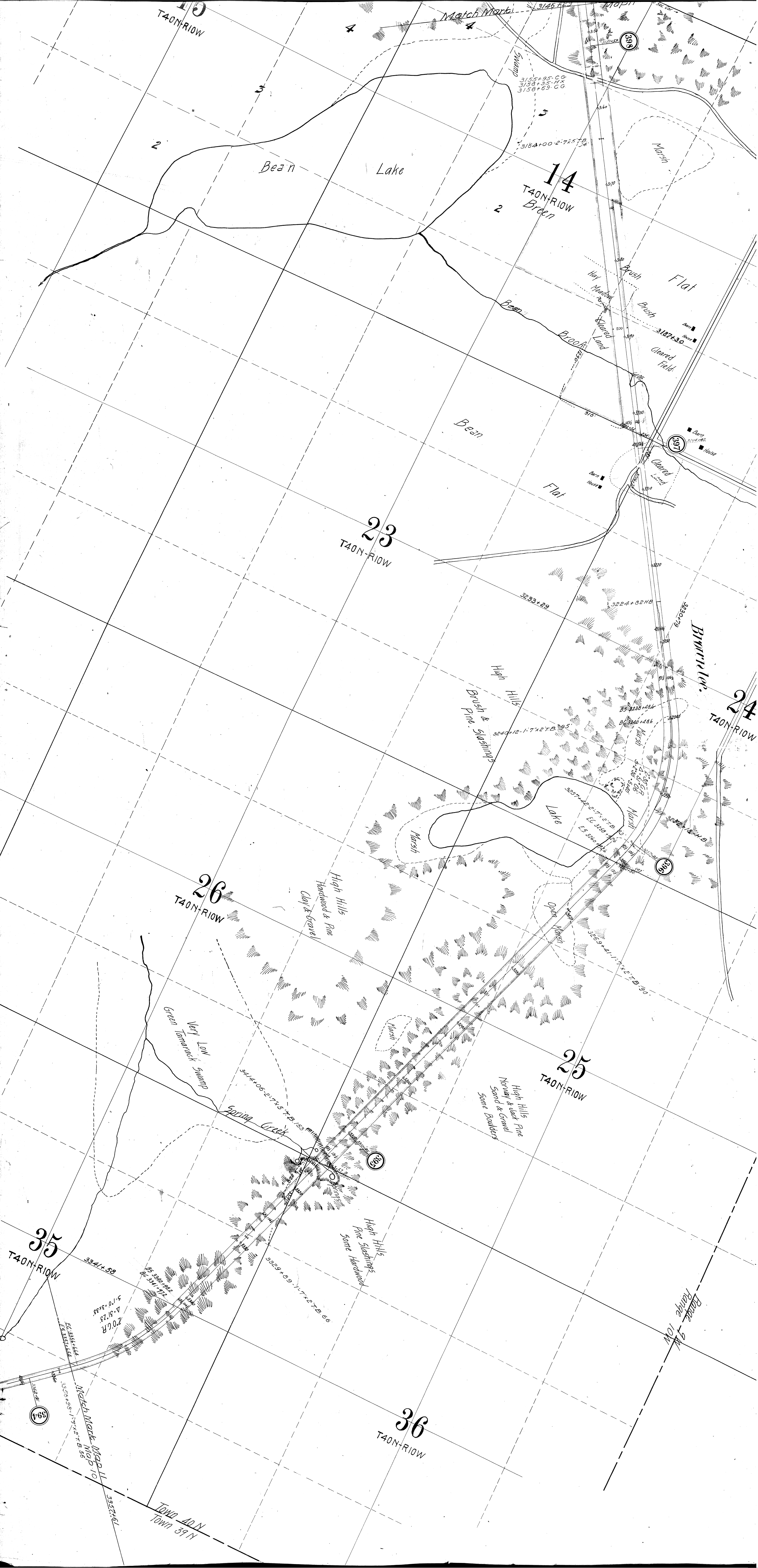
T89N R9W
29

T89N R9W
30

Match Mark

Map 9





T40N-R10W

Match Mark

Bean Lake

14
T40N-R10W
Bean

Marsh

Brush Flat

Bean

Brush

Marsh

Bean

Flat

23
T40N-R10W

24
T40N-R10W

Brush Flat

High Hills

Brush & Sassafras

Lake

Marsh

26
T40N-R10W

High Hills
Hardwood & Pine
Clay & Gravel

25
T40N-R10W

High Hills
Normal & Jack Pine
Sand & Gravel
Some Boulders

Green Tamarack

Spring Creek

High Hills
Pine Sassafras
Some Hardwood

35
T40N-R10W

36
T40N-R10W

Range 9

Match Mark

Town 40 N
Town 59 N

27
TAIN-RIOW

33
TAIN-RIOW

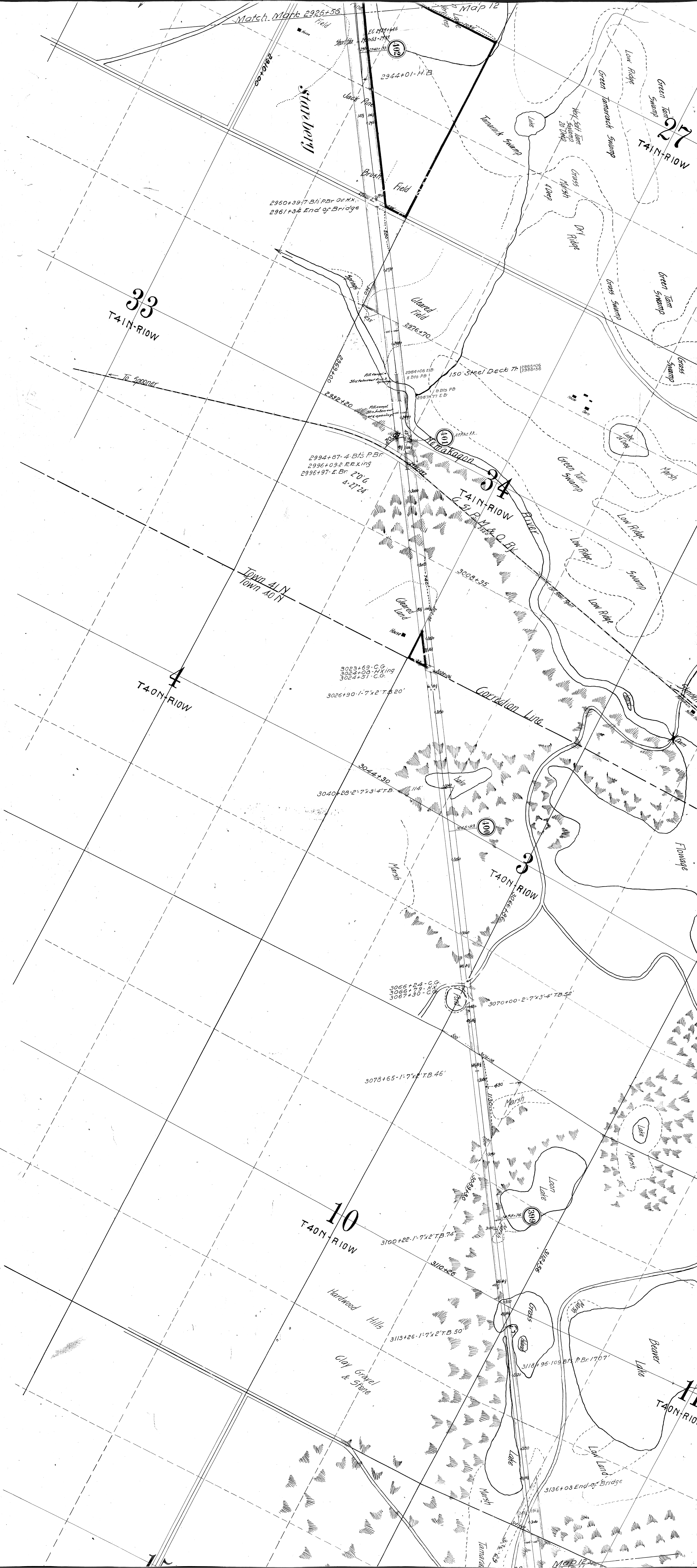
34
TAIN-RIOW

4
T40N-RIOW

3
T40N-RIOW

10
T40N-RIOW

11
T40N-RIOW



7
TAIN-RIOW

2731+55

Big Swamp

8
TAIN-RIOW Dry Ridge

Tamarack & Cedar Windfall Swamp

2752+65-9-B15 P.Br. III
2753+76 E.B.

Swamp
Tam & Cedar
Windfall

2752+05

2767+20-2'1"x3'-4" B 34'

Tamarack & Cedar
Windfall Swamp

Swamp
Little
Chippewau
Creek

2775+70

2783+21-9-B15 P.Br. II
2784+33 E.Br.

17
TAIN-RIOW

Dry Ridge

Little
Chippewau
Creek

2823+68 P.F. #10 S.F.
2825+50 H.B.

2815+54

Green Tam
& Cedar

16
TAIN-RIOW

2833+75-2'7"x3'-4" B 34'

Windfall Swamp

20
TAIN-RIOW

Green Tam
& Cedar
Swamp

2861+06-2'-7"x5" B 44'

2861+90

21
TAIN-RIOW

2869+35-1'7"x2" B 30'

2876+20

Chippewau
Creek

Windfall Swamp

Windfall Swamp

2890+56 C.G.
2890+59 H.B.
2891+17 C.G.

2901+75-9-B15 P.Br. 126'
2903+01 Endor Bridge
2903+05 H.B.
2903+90-H.B.

2906+53 W.T.

28
TAIN-RIOW

2920+85

2930+28

Open Lake
Open Marsh
Tain Swamp

Green Tamarack
Swamp

Green Tamarack
Swamp

Dry Ridge

MAP 13

24
T42N-R11W

26
T42N-R11W

25
T42N-R11W

36
T42N-R11W

31
T42N-R10W

1
T41N-R11W

6
T41N-R10W

5
T41N-R10W

2515+00-1'-7"x2' T.B.32'

Cedar & White Birch Swamp

2526+79-4 Bfs P.B. 42
2527+21-End of Brk 50

2533+88-1'-7"x2' T.B.32'

2536+80-2'-7"x5' Doub. T.B.34'

Solid Rock Hills

Solid Rock 30' High

Good Timber

2546+62

Green Cedar & Spruce Swamp

2547+37

Green Tim & Cedar Swamp

2606+15

130° 192'

700

2604+20

Open Spruce Swamp

2604+15

Green Tim & Cedar Swamp

Green Hackberry Swamp

Town 42 N
Town 41 N

Range 10 W
Range 11 W

2672+13 Log R. King
2672+86 H.B.

2671+10

Open Spruce Swamp

Holm Oak

2686+20

2702+93-H.B.

Tamarack & Cedar

Douglas County
Washburn County

34
T43N-R11W

4
T42N-R11W

Town 42N
Town 42N

Match Mark 2293+16

Map 16
Map 15

413

3
T42N-R11W

Jack & Norway Pine

2337+00
2337+00

2356+39 H.B.

413

10
T42N-R11W

2383+03 H.X.
2383+03 H.X.

2391+30

Sand & Jack Pine

Chittano
412

11
T42N-R11W

Sand & Jack Pine

2411+03 CG
2411+20 HX
2411+78 CG

2423+46-6 Bt; P.Br. 80
2424+26 End of Br

2426+38-11 Bt P.B. 155
2427+90 End of Br

2441+16

2439+12-6 Bt; P.Br. 68
2439+00 End of Br

Hardwood
Oak & Rock

14
T42N-R11W

411

Hardwood & N. Pine

2485+187

2486+62-17x2 T.B. 40
2489+00-27x3.4 T.B. 44

23
T42N-R11W

Green Herd
Oak & Rock

Map 15

Match Mark Map 16

17
T43N R11W

16
T43N R11W

2112+57-P.F.
2113+39-H.B.#1

2124+62-C.G.
2125+32-H.X.
2125+08-C.G.

20
T43N R11W

LILLY
PAD
LAKE

21
T43N R11W

RED
LAKE

5
2168+76 FX.
2170

EC=2183+72.7
E.S.=2185+07.7

1
419

28
T43N R11W
and
Norway

Jack
Sand Hills
Spruce and Tamarack
Swamp

2220+97
2220
2230
Spruce
and
Tamarack
Swamp
Sink
Hole
2244+07
2240
2250
Spruce Swamp

33
T43N R11W

Brush
Sand
Gravel
2262+98
2270
2271+80-1'-7"x2'TB 40'

DOUGLAS CO.
WASHBURN CO.

TOWN 43 NORTH, RANGE 11 WEST
TOWN 42 NORTH, RANGE 11 WEST

2289+35-Bridge
1-60' PIG-G.B.1 Pile.Br
2290+89-E.B.
Match Mark 2293+16

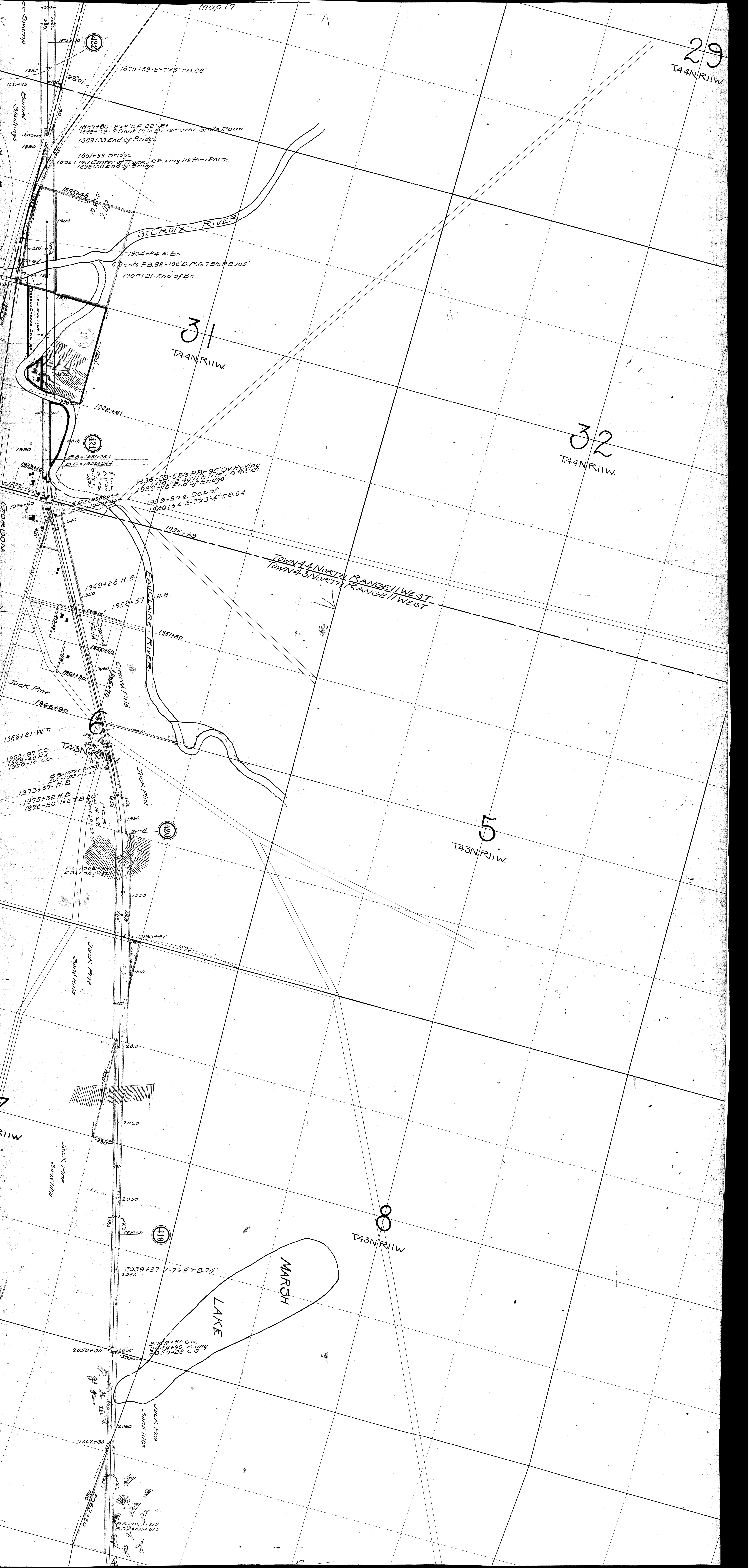
Map 16
Map 15

2297+85
2298+96
2300
Methyl
Cyanides

TO OREGON RIVER
LOW SWAMP

High Hills
10th Above River
Green Tan

4



Map 17

29
T44N R11W

31
T44N R11W

32
T44N R11W

5
T43N R11W

8
T43N R11W

1879+59-2-7x5' T.B. 88'
1887+80-2x2' C.P. 22'-24'
1888+09-9 Bent Pile Br 124' over State Road
1889+33 End of Bridge
1891+39 Bridge
1892+14.7 Center of Track, c.e. xing 119' thru Riv. Tr.
1892+38 End of Bridge
1895+45
1904+24 E. Br.
6 Bents P.B. 92'-100' D.P. 6.7 Bts P.B. 105'
1907+21 End of Br.
1922+61
1936+25-6 Bts P.Br 95' Ov. Hy. xing
1936+25-6 Bts P.Br 95' Ov. Hy. xing
1939+176 End of Bridge
1939+80 & Depot
1940+64-2-7x3-4' T.B. 64'
1949+28 H.B.
1952+57 H.B.
1954+60
1954+80
1961+30
1966+90
1966+21-W.T.
1968+97 C.G.
1969+29 H.A.
1970+15-C.G.
1973+67 H.B.
1975+32 H.B.
1976+30-1x2' T.B. 20'
1995+47
2039+37-1-7x2' T.B. 74'
2040
2049+51-C.G.
2049+90-C.G.
2050+23-C.G.
2050+00
2062+30
2073+215
2073+875

ST. CROIX RIVER

ECLAIRE RIVER

JACK PINE

JACK PINE

JACK PINE

JACK PINE

JACK PINE

GORDON

Jack Pine

Jack Pine

Jack Pine

Jack Pine

Jack Pine

GORDON

Jack Pine

Jack Pine

Jack Pine

Jack Pine

Jack Pine

GORDON

Jack Pine

Jack Pine

Jack Pine

Jack Pine

Jack Pine

GORDON

Jack Pine

Jack Pine

Jack Pine

Jack Pine

Jack Pine

GORDON

Jack Pine

Jack Pine

Jack Pine

Jack Pine

Jack Pine

GORDON

Jack Pine

Jack Pine

Jack Pine

Jack Pine

Jack Pine

GORDON

Jack Pine

Jack Pine

Jack Pine

Jack Pine

Jack Pine

GORDON

Jack Pine

Jack Pine

Jack Pine

Jack Pine

Jack Pine

GORDON

Jack Pine

Jack Pine

Jack Pine

Jack Pine

Jack Pine

GORDON

Jack Pine

Jack Pine

Jack Pine

Jack Pine

Jack Pine

GORDON

Jack Pine

Jack Pine

Jack Pine

Jack Pine

Jack Pine

GORDON

Jack Pine

Jack Pine

Jack Pine

Jack Pine

Jack Pine

GORDON

Jack Pine

Jack Pine

Jack Pine

Jack Pine

Jack Pine

GORDON

Jack Pine

Jack Pine

Jack Pine

Jack Pine

Jack Pine

GORDON

Jack Pine

Jack Pine

Jack Pine

Jack Pine

Jack Pine

GORDON

Jack Pine

Jack Pine

Jack Pine

Jack Pine

Jack Pine

GORDON

Jack Pine

Jack Pine

Jack Pine

Jack Pine

Jack Pine

GORDON

Jack Pine

Jack Pine

Jack Pine

Jack Pine

Jack Pine

GORDON

Jack Pine

Jack Pine

Jack Pine

Jack Pine

Jack Pine

GORDON

Jack Pine

Jack Pine

Jack Pine

Jack Pine

Jack Pine

GORDON

Jack Pine

Jack Pine

Jack Pine

Jack Pine

Jack Pine

GORDON

Jack Pine

Jack Pine

Jack Pine

Jack Pine

Jack Pine

GORDON

Jack Pine

Jack Pine

Jack Pine

Jack Pine

Jack Pine

GORDON

Jack Pine

Jack Pine

Jack Pine

Jack Pine

Jack Pine

GORDON

Jack Pine

Jack Pine

Jack Pine

Jack Pine

Jack Pine

GORDON

Jack Pine

Jack Pine

Jack Pine

Jack Pine

Jack Pine

GORDON

Jack Pine

Jack Pine

Jack Pine

Jack Pine

Jack Pine

GORDON

Jack Pine

Jack Pine

Jack Pine

Jack Pine

Jack Pine

GORDON

Jack Pine

Jack Pine

Jack Pine

Jack Pine

Jack Pine

GORDON

Jack Pine

Jack Pine

Jack Pine

Jack Pine

Jack Pine

GORDON

Jack Pine

Jack Pine

Jack Pine

Jack Pine

Jack Pine

GORDON

Jack Pine

Jack Pine

Jack Pine

Jack Pine

Jack Pine

GORDON

Jack Pine

Jack Pine

Jack Pine

Jack Pine

Jack Pine

GORDON

Jack Pine

Jack Pine

Jack Pine

Jack Pine

Jack Pine

GORDON

Jack Pine

Jack Pine

Jack Pine

Jack Pine

Jack Pine

GORDON

Jack Pine

Jack Pine

Jack Pine

Jack Pine

Jack Pine

GORDON

Jack Pine

Jack Pine

Jack Pine

Jack Pine

Jack Pine

GORDON

Jack Pine

Jack Pine

Jack Pine

Jack Pine

Jack Pine

GORDON

Jack Pine

Jack Pine

Jack Pine

Jack Pine

Jack Pine

GORDON

Jack Pine

Jack Pine

Jack Pine

Jack Pine

Jack Pine

GORDON

Jack Pine

Jack Pine

Jack Pine

Jack Pine

Jack Pine

GORDON

Jack Pine

Jack Pine

Jack Pine

Jack Pine

Jack Pine

GORDON

Jack Pine

Jack Pine

Jack Pine

Jack Pine

Jack Pine

GORDON

Jack Pine

Jack Pine

Jack Pine

Jack Pine

Jack Pine

GORDON

Jack Pine

Jack Pine

Jack Pine

Jack Pine

Jack Pine

GORDON

Jack Pine

Jack Pine

Jack Pine

Jack Pine

Jack Pine

GORDON

Jack Pine

Jack Pine

Jack Pine

Jack Pine

Jack Pine

GORDON

Jack Pine

Jack Pine

Jack Pine

Jack Pine

Jack Pine

GORDON

Jack Pine

Jack Pine

Jack Pine

Jack Pine

Jack Pine

GORDON

Jack Pine

Jack Pine

Jack Pine

Jack Pine

Jack Pine

GORDON

Jack Pine

Jack Pine

Jack Pine

Jack Pine

Jack Pine

GORDON

Jack Pine

Jack Pine

Jack Pine

Jack Pine

Jack Pine

GORDON

Jack Pine

Jack Pine

Jack Pine

Jack Pine

Jack Pine

GORDON

Jack Pine

Jack Pine

Jack Pine

Jack Pine

Jack Pine

GORDON

Jack Pine

Jack Pine



12
T.44N.R.12W.

7
T.44N.R.11W.

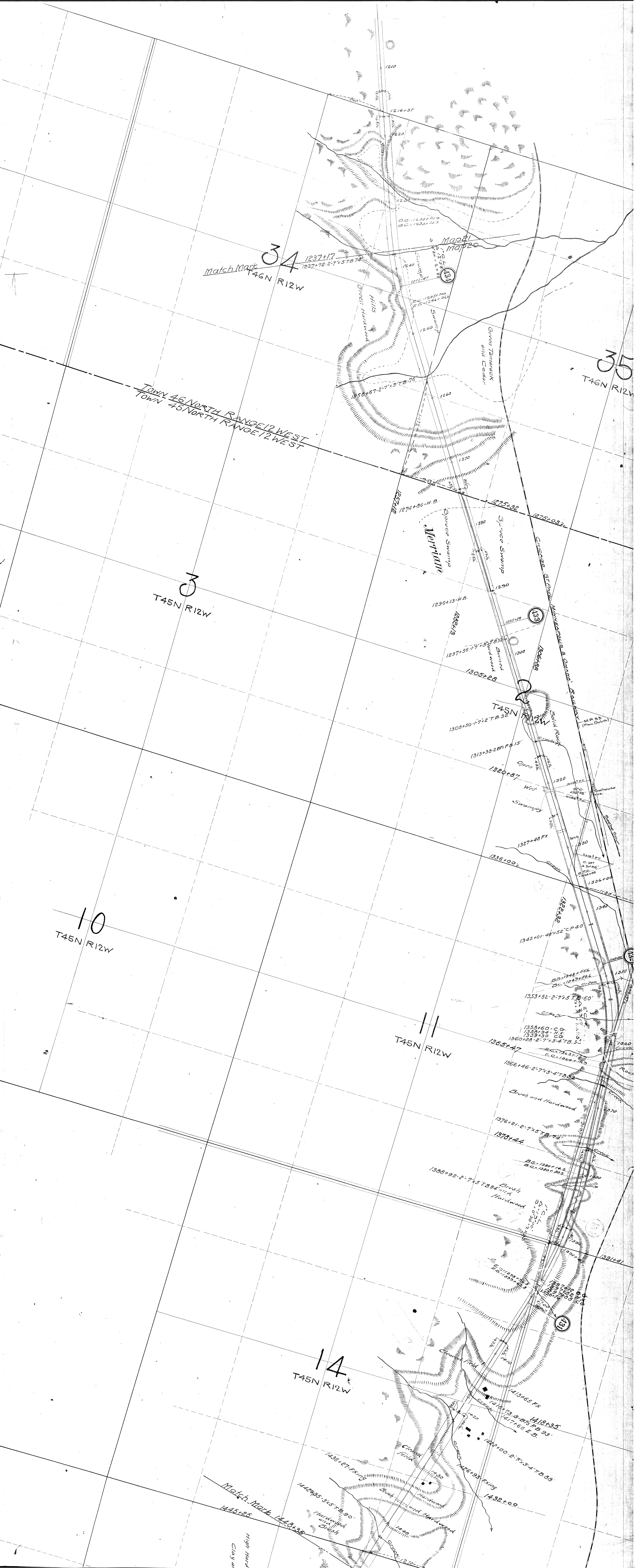
13
T.44N.R.12W.

18
T.44N.R.11W.

19
T.44N.R.11W.

24
T.44N.R.12W.

30
T.44N.R.11W.



Match Mark 34
T46N R12W

35
T46N R12W

Town 46 North Range 12 West
Town 45 North Range 12 West

3
T45N R12W

10
T45N R12W

11
T45N R12W

14
T45N R12W

Match Mark 1445+85
1448+35
High Hard Clay at

Maple Mapped

Green Hills

Maple Swamp
Green Tamarack and Cedar

Sage Swamps
Maple Swamp

Chicago Street
Minkowski & Grand
Solid Rock

Wet Swampy

Brush and Hardwood

Brush and Hardwood

High Hard Clay at

1210
1216+37
1220
1232
1240
1250
1260
1270
1280
1290
1300
1310
1320
1330
1340
1350
1360
1370
1380
1390
1400

1237+17
1237+78-2-745 T.B.74

1256+57-2-745 T.B.70

1274+86-H.B.

1290+13-H.B.

1297+56-1-712 T.B.32

1308+50-1-712 T.B.32

1313+38-2-B.P.15

1320+87

1327+48 Fx

1336+00

1342+01-48+52-C.P.40

1353+52-2-745 T.B.60

1358+60-C.G.
1358+94-H.B.
1359+90-C.G.
1360+58-2-745 T.B.50

1366+46-2-743-4-T.B.82

1376+81-2-745 T.B.70

1378+44

1388+92-2-745 T.B.91

1390+44

1413+65 Fx

1418+35
1423+55 T.B.93
1427+66 F.B.

1422+00-2-743-4-T.B.83

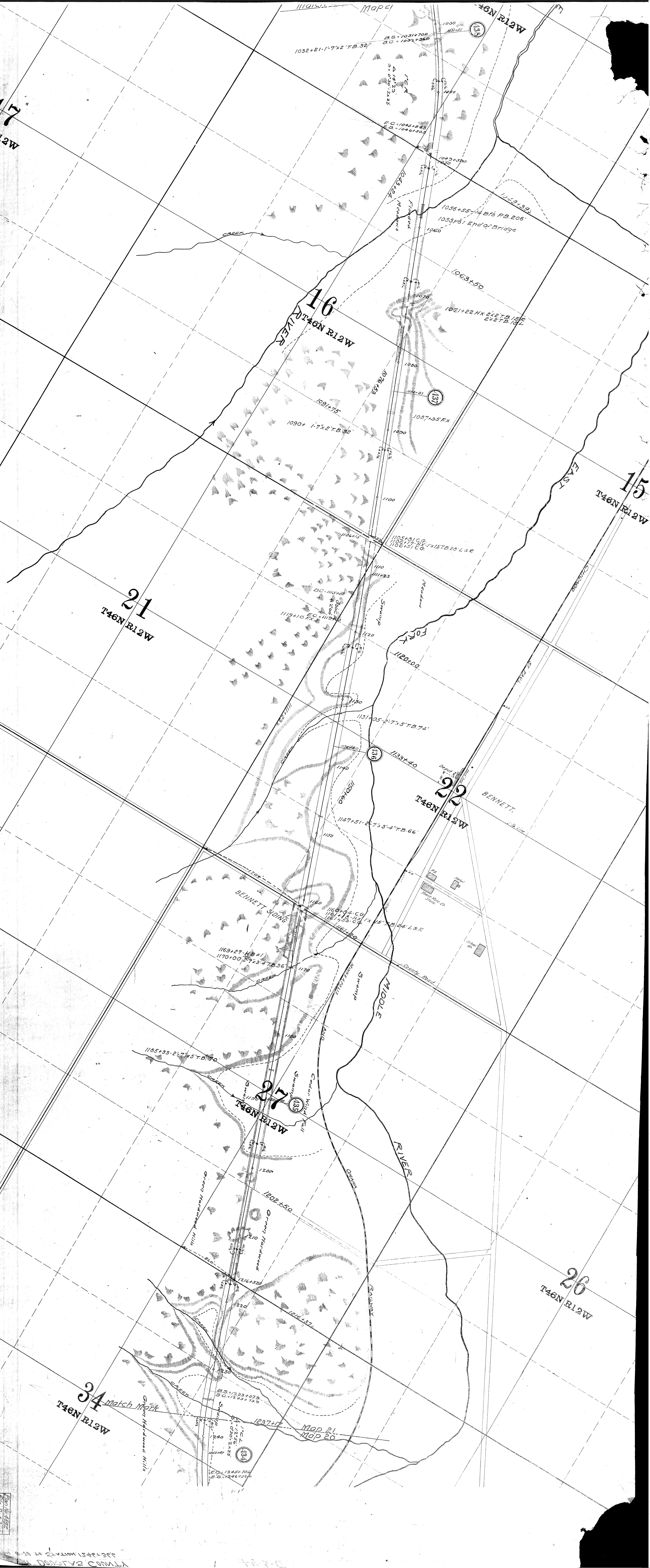
1426+93 Fx

1432+00

1436+87 Fx

1442+35-345 T.B.90

1445+85
1448+35



17
2W

16
T46N R12W

15
T46N R12W

21
T46N R12W

22
T46N R12W

27
T46N R12W

26
T46N R12W

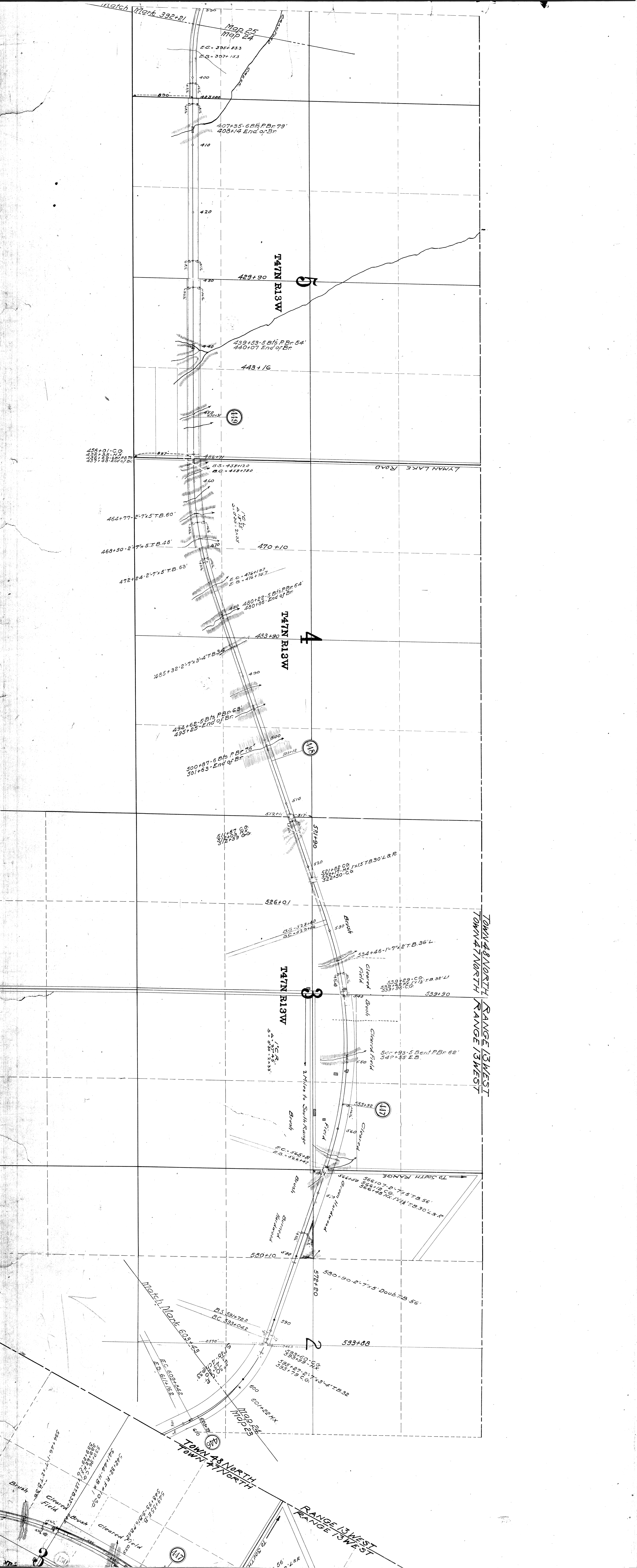
34
T46N R12W

Match Mark

Map 21
Map 20

Plan 16-17-18-19

25-26-27-28-29-30-31-32-33-34-35-36-37-38-39-40-41-42-43-44-45-46-47-48-49-50-51-52-53-54-55-56-57-58-59-60-61-62-63-64-65-66-67-68-69-70-71-72-73-74-75-76-77-78-79-80-81-82-83-84-85-86-87-88-89-90-91-92-93-94-95-96-97-98-99-100



Match Mark 392+21

Map 25
Map 24

E.C. = 375+83.3
E.S. = 357+15.3

407+35-6 Bt's PBr 79'
408+14 End of Br

147N R13W

429+90

439+53-5 Bt's PBr 54'
440+07 End of Br

443+16

419

455+01-CG
456+85-174
458+123-227 PBr 52'

LYMAN LAKE ROAD

464+77-2-7x5 TB.60'

468+50-2-7x5 TB.48'

472+24-2-7x5 TB.63'

470+10

1/2 C.L.
S. 0.50' 2.33'

E.C. = 476+19.7
E.S. = 474+75.7

480+22-5 Bt's PBr 64'
480+56 End of Br

147N R13W

483+90

485+32-2-7x3-2 TB 32'

492+62-5 Bt's PBr 63'
495+25 End of Br

500+97-6 Bt's PBr 76'
501+63 End of Br

419

511+67 CG
512+03 CG
512+39 CG

512+11

517

521+90

520

521+82 CG
521+77-HX
522+50-CG

526+01

147N R13W

532+40

532+46

Brush

Brush

Brush

Brush

Brush

Brush

Brush

Brush

Brush

Brush

Brush

Brush

Brush

Brush

Brush

Brush

Brush

Brush

Brush

Brush

Brush

534+46-1-7x2 TB 36'L

539+22 CG
539+17-HX
539+50 CG

539+50 CG
539+45 CG
539+40 CG

539+40 CG
539+35 CG
539+30 CG

539+30 CG
539+25 CG
539+20 CG

539+20 CG
539+15 CG
539+10 CG

539+10 CG
539+05 CG
539+00 CG

539+00 CG
538+55 CG
538+50 CG

538+50 CG
538+45 CG
538+40 CG

538+40 CG
538+35 CG
538+30 CG

538+30 CG
538+25 CG
538+20 CG

538+20 CG
538+15 CG
538+10 CG

538+10 CG
538+05 CG
538+00 CG

538+00 CG
537+55 CG
537+50 CG

537+50 CG
537+45 CG
537+40 CG

537+40 CG
537+35 CG
537+30 CG

537+30 CG
537+25 CG
537+20 CG

537+20 CG
537+15 CG
537+10 CG

537+10 CG
537+05 CG
537+00 CG

537+00 CG
536+55 CG
536+50 CG

536+50 CG
536+45 CG
536+40 CG

536+40 CG
536+35 CG
536+30 CG

536+30 CG
536+25 CG
536+20 CG

TOWN 48 NORTH
RANGE 13 WEST

542+93-5 Bent PBr 62'
542+55 E.B.

555+62

555+62

555+62

555+62

555+62

555+62

555+62

555+62

555+62

555+62

555+62

555+62

555+62

555+62

555+62

555+62

547+06 Bt's PBr 55'
547+06 Bt's PBr 55'

547+06 Bt's PBr 55'
547+06 Bt's PBr 55'

547+06 Bt's PBr 55'
547+06 Bt's PBr 55'

547+06 Bt's PBr 55'
547+06 Bt's PBr 55'

547+06 Bt's PBr 55'
547+06 Bt's PBr 55'

547+06 Bt's PBr 55'
547+06 Bt's PBr 55'

547+06 Bt's PBr 55'
547+06 Bt's PBr 55'

547+06 Bt's PBr 55'
547+06 Bt's PBr 55'

547+06 Bt's PBr 55'
547+06 Bt's PBr 55'

547+06 Bt's PBr 55'
547+06 Bt's PBr 55'

547+06 Bt's PBr 55'
547+06 Bt's PBr 55'

547+06 Bt's PBr 55'
547+06 Bt's PBr 55'

547+06 Bt's PBr 55'
547+06 Bt's PBr 55'

547+06 Bt's PBr 55'
547+06 Bt's PBr 55'

547+06 Bt's PBr 55'
547+06 Bt's PBr 55'

547+06 Bt's PBr 55'
547+06 Bt's PBr 55'

547+06 Bt's PBr 55'
547+06 Bt's PBr 55'

547+06 Bt's PBr 55'
547+06 Bt's PBr 55'

547+06 Bt's PBr 55'
547+06 Bt's PBr 55'

547+06 Bt's PBr 55'
547+06 Bt's PBr 55'

547+06 Bt's PBr 55'
547+06 Bt's PBr 55'

547+06 Bt's PBr 55'
547+06 Bt's PBr 55'

547+06 Bt's PBr 55'
547+06 Bt's PBr 55'

Match Mark 603+43

Map 24
Map 25

TOWN 48 NORTH
RANGE 13 WEST

RANGE 13 WEST
RANGE 13 WEST

24

T48N R14W

19
T48N R13W

25
T48N R14W

30
T48N R13W

31
T48N R13W

TOWN 48 NORTH RANGE 13 WEST
TOWN 47 NORTH RANGE 13 WEST

6
T47N R13W

202+82 C.G.
203+13 N.K.
203+57 C.G.

212+85-2.7x5 T.B. 56'

223+85-5 B's P.Br. 54'
222+59-1 B.

250+06-H.B.

Sunnyside

285+33 C.G.
287+42

289+76.5 H.B.

294+58-2.7x5 T.B. 46'

307+13-6 B's P.Br. 68'
307+86 End of Br.

352+40

352+40

367+18-9 B's P.Br. 116'
368+34 End of Br.

362+40

366+20

382+60

373+00

366+89-3.7x5 T.B. 54'

Map 25
Map 24

Match Line 392+21

408+12 End of Br.
407+35 6 B's P.Br. 79'

429+90

