



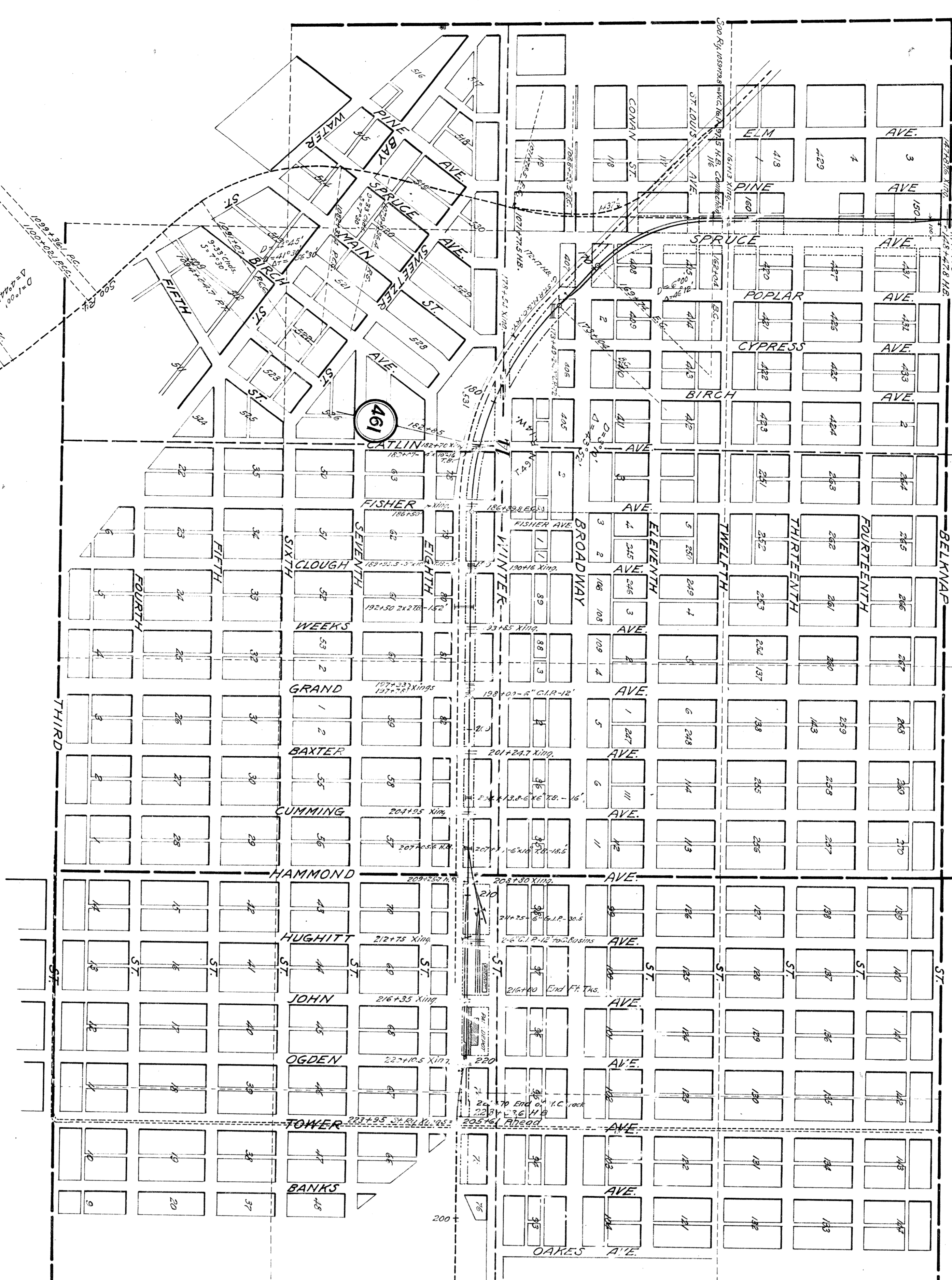
MATCH MARK 1  
MAP-1  
MAP-2

7 Panels Show Fence  
From 328

28 Panels Show Fence  
From 328

12 Panels Show Fence  
From 328

**SUPERIOR**  
DOUGLAS CO. WIS.

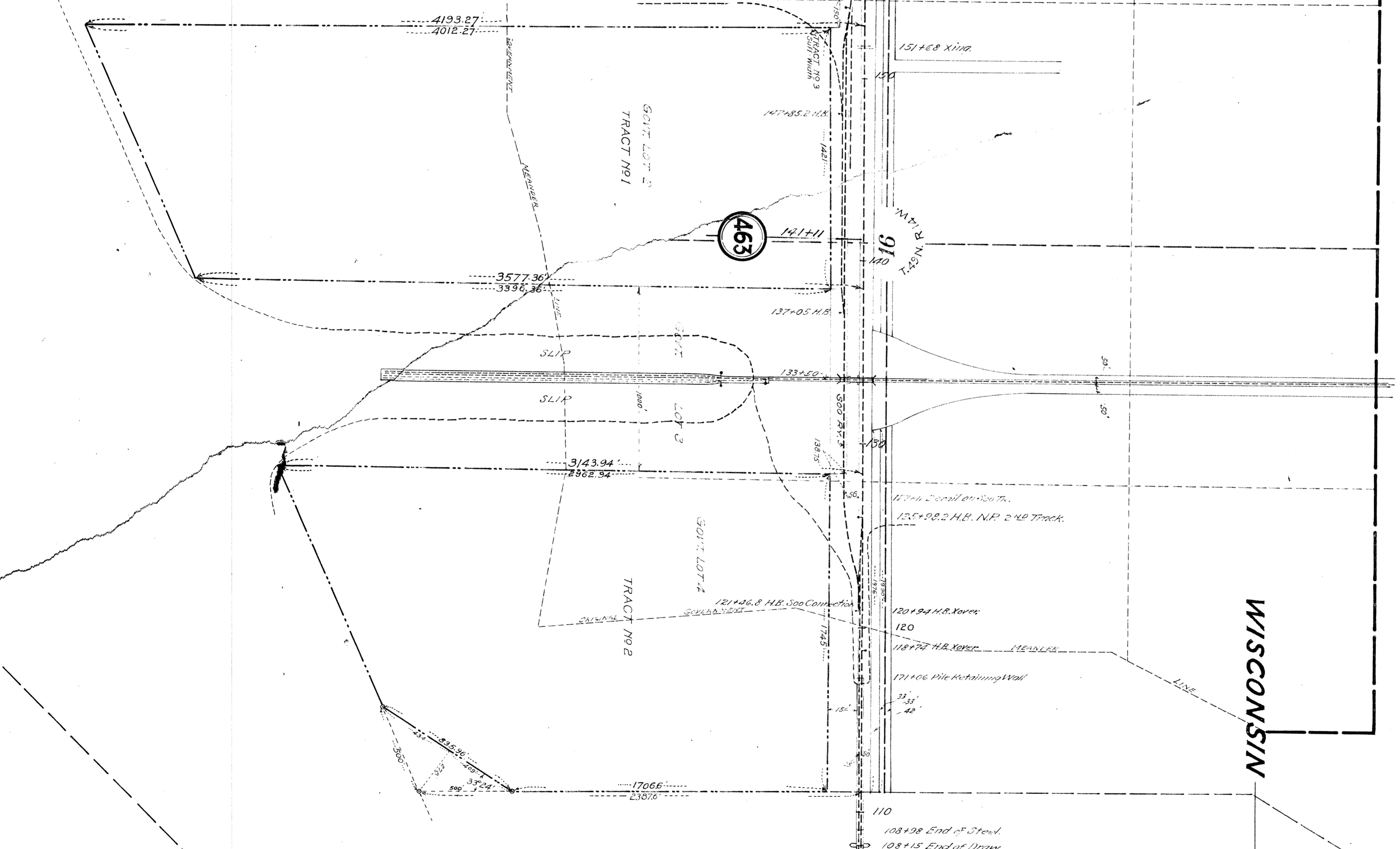
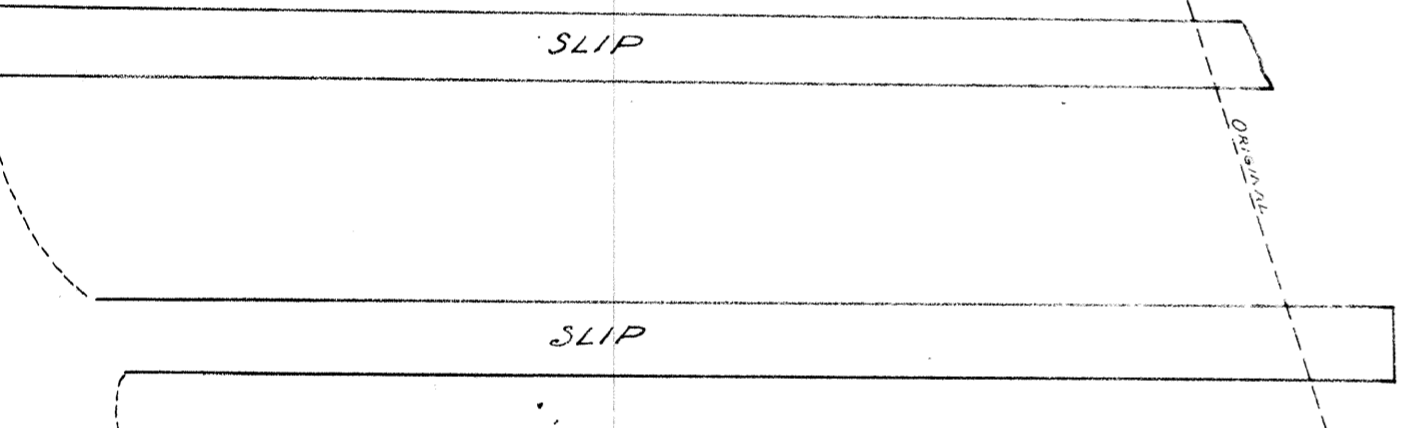


461

462

463

464



MATCH MARK 2 106+00

END VAL SEC. 21 WIS. MAP-2

102+15.5 End of Drain  
103+12.7 End of Steel

WISCONSIN

MINNESOTA

ST. LOUIS

BAY

BEGIN VAL. SEC. 3 MINN.

70+34.1 H.S. P.V.S. Cont.

DW&E

APR 1914

1-21

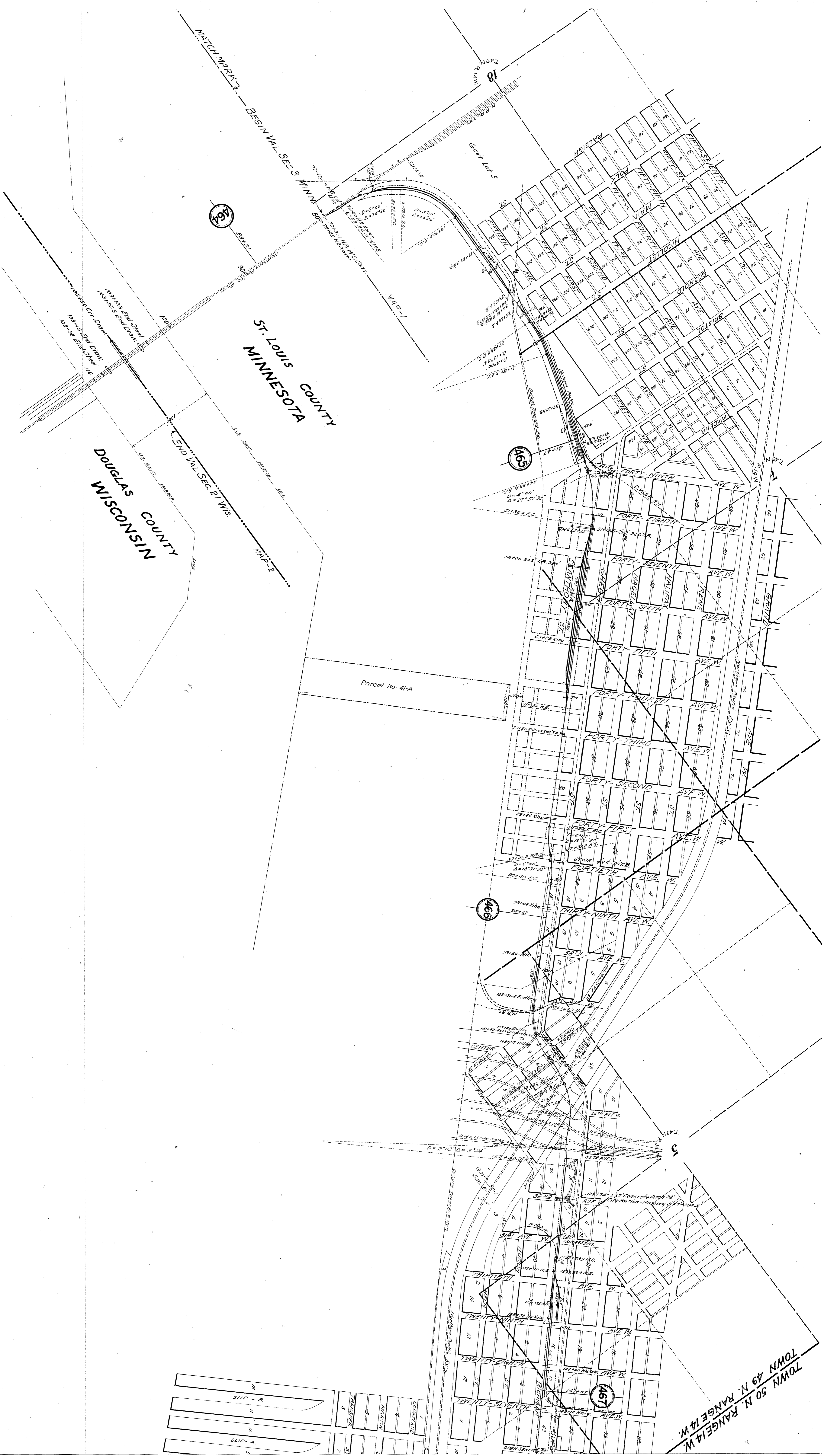
MATCH MARK - BEGIN VAL. SEC. 3 MINN.

ST. LOUIS COUNTY  
MINNESOTA

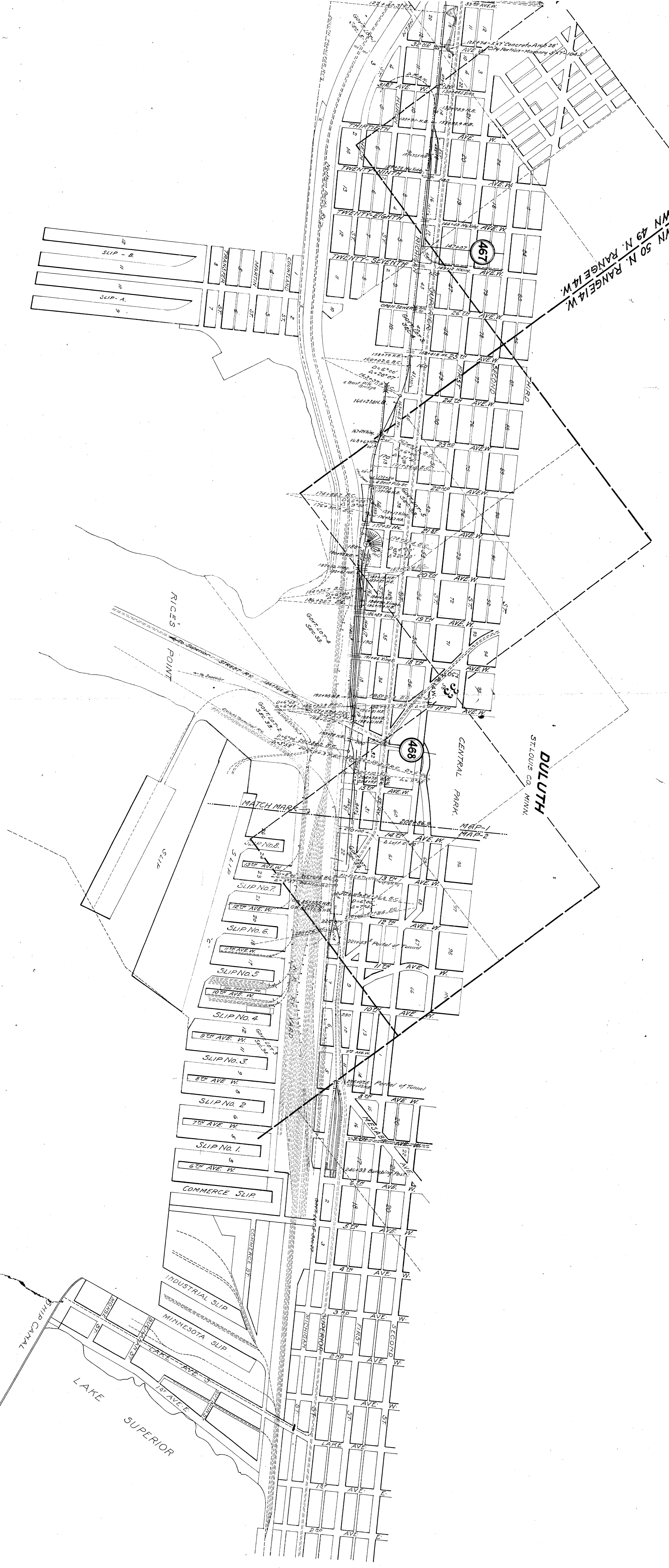
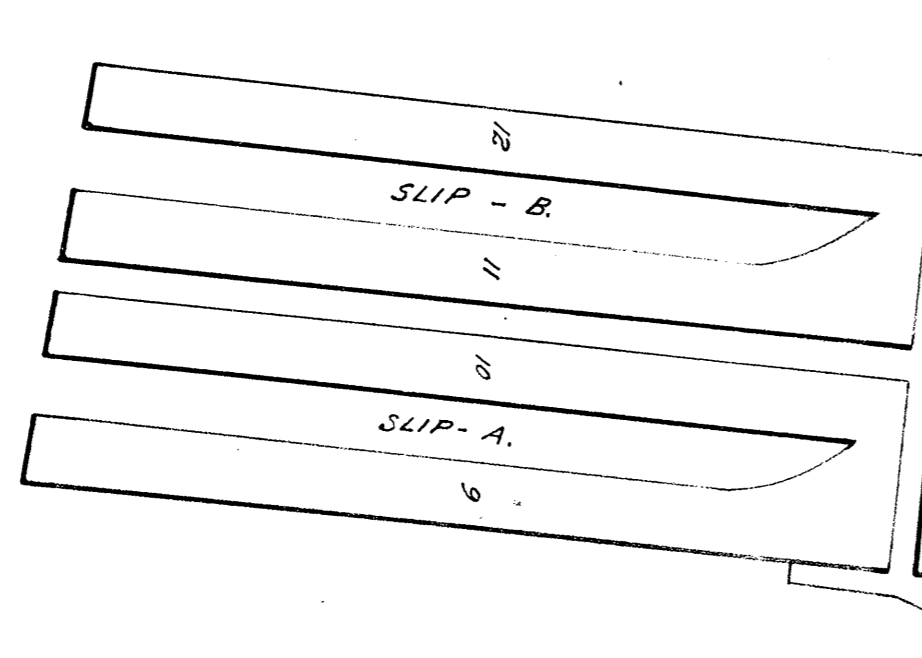
DOUGLAS COUNTY  
WISCONSIN

SLIP - B  
SLIP - A

TOWN 50 N. RANGE 14 W.  
TOWN 49 N. RANGE 14 W.



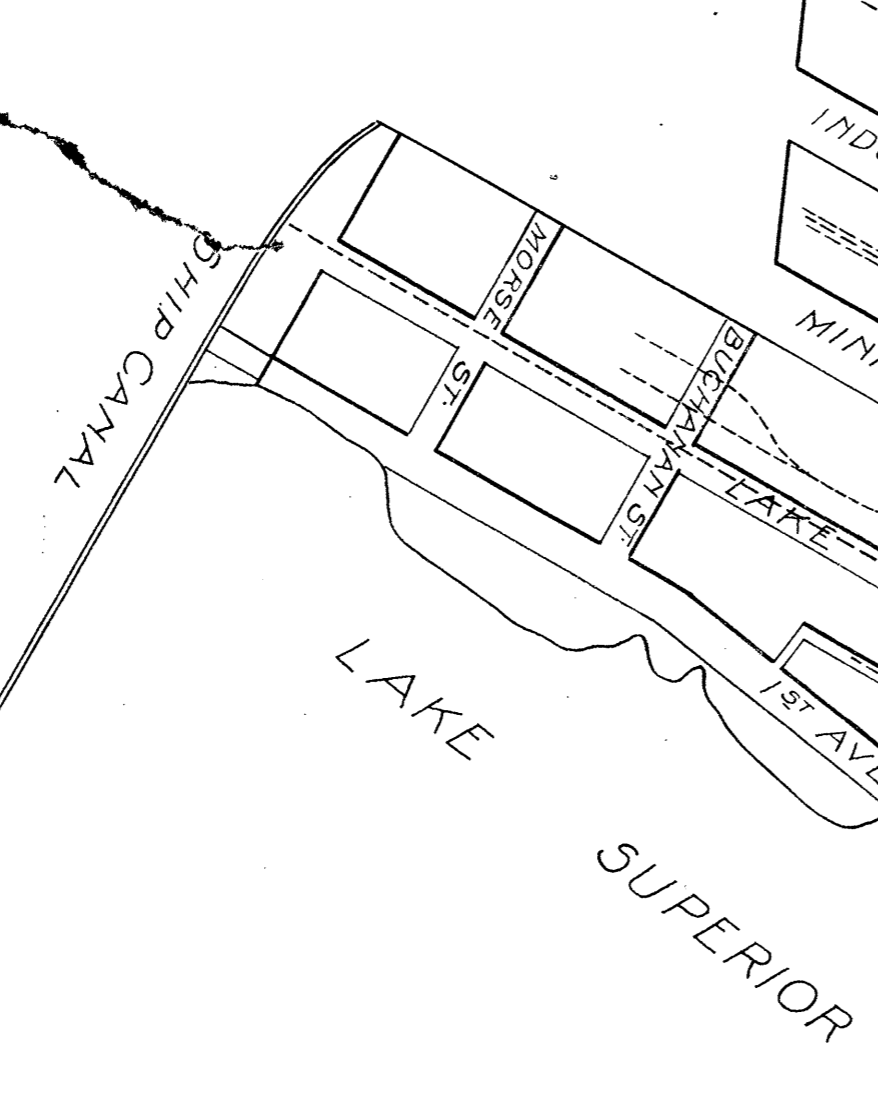
TOWN 50 N RANGE 14 W  
TOWN 49 N RANGE 14 W



DULUTH  
ST. LOUIS CO. MINN.

468

467



**Right of Way and Track Map**  
WISCONSIN CENTRAL RAILWAY CO.  
Operated by  
MINNEAPOLIS ST. PAUL & SAULT STE. MARIE RAILWAY CO.  
SUPERIOR & DULUTH  
Station 64+40 to Station 648+33  
Scale 1"=400'  
Nov 27, 1912  
Office of Valuation Engineers  
Minneapolis, Minn.  
G.D.

*Handwritten notes:*  
C. J. ...  
...